

PRIME RETAIL FOR LEASE AT COLLEGE & OSSINGTON



# 818

COLLEGE STREET // TORONTO

# 818

COLLEGE STREET // TORONTO

## Retail for Lease

**Size:** 1,966 sq. ft.

**Net Rent:** \$40.00 per sq. ft.

**TMI:** \$9.00 per sq. ft.

**Available:** Immediate

- Located in the trendy Ossington Avenue and College node
- Perfect size for a wide array of users
- Amazing signage opportunity
- Great ceiling height
- Includes finished basement of 1,962 sq. ft. and 1 parking spot





**CBRE**

# LOCATION

## COLLEGE & OSSINGTON AVENUE

Located steps from the corner of College and Ossington Avenue in the popular Little Italy neighbourhood. 818 College is surrounded by local culinary favourites such as Bar Isabel, Starving Artist, Pray Tell and Bake Shoppe. National chains also neighbour the site including Metro, A&W, Shoppers Drug Mart and Starbucks. 818 College Street benefits from having TTC access at its front door and being surrounded by an affluent and dense residential population and is minutes from The Ossington Strip, Queen West, Trinity Bellwoods Park, The Annex and Kensington Market.



Average Household Income:  
**\$102,536\***

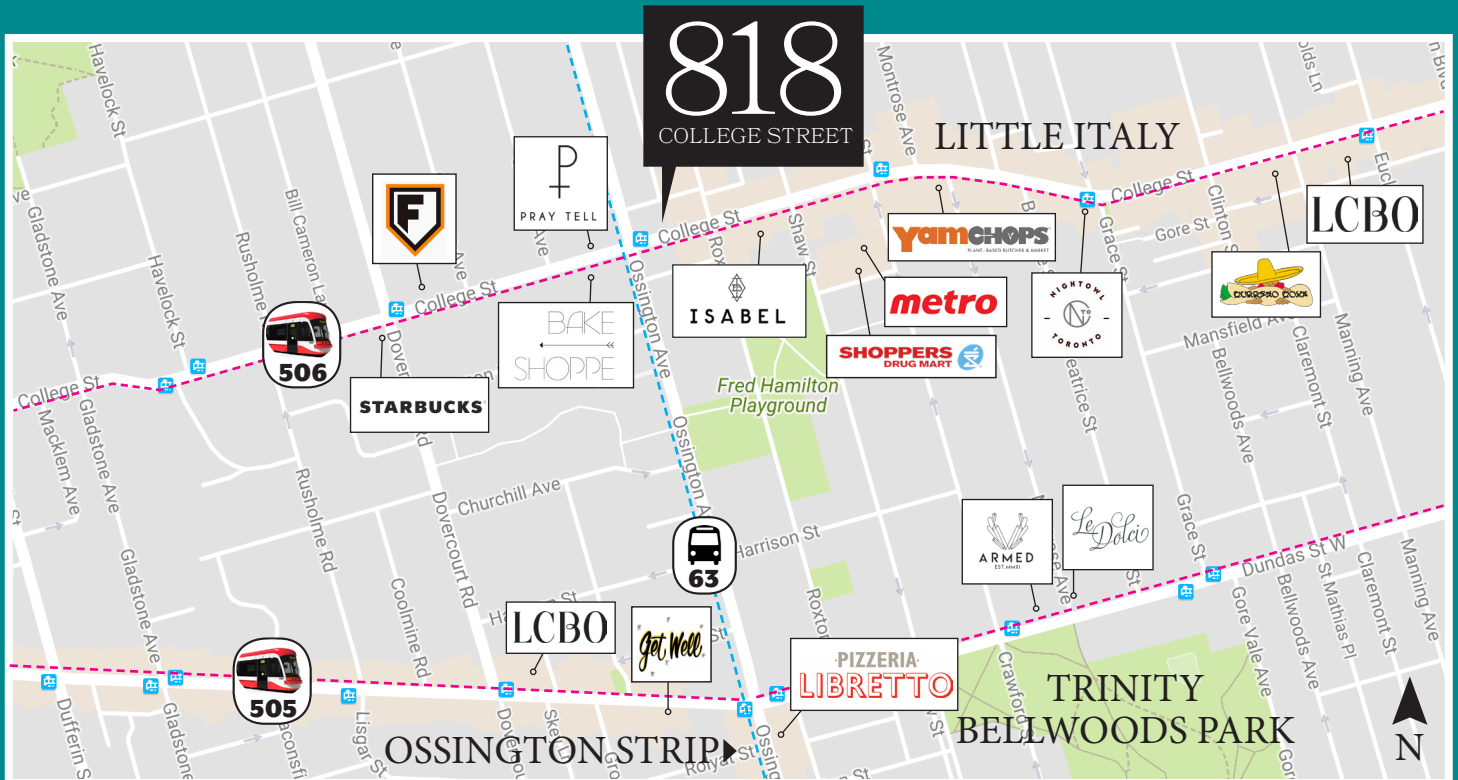


Estimated Population (2017)  
**33,826\***



Population Growth (2017-2022)  
**3.8%\***

\*Within 1km of 818 College Street





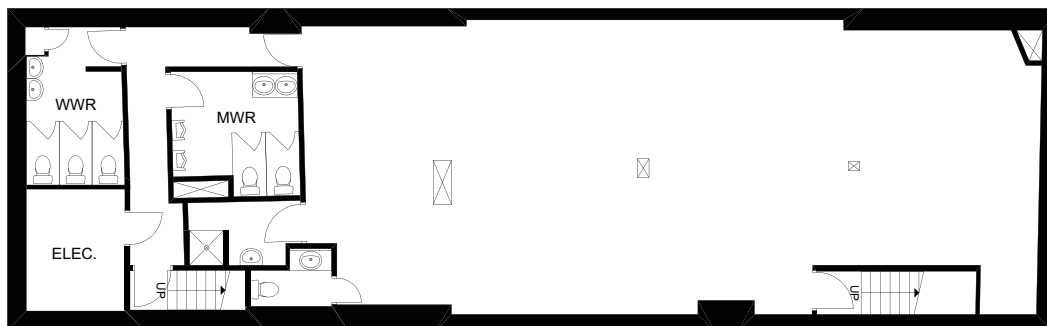


## FLOOR PLANS

**Ground Floor:** 1,966 sq. ft.



**Basement Floor:** 1,942 sq. ft.



FOR MORE INFORMATION  
**CONTACT**

---

**Arlin Markowitz\***  
Senior Vice President  
416 815 2374  
arlin.markowitz@cbre.com

**Alex Edmison\***  
Vice President  
416 874 7266  
alex.edmison@cbre.com

**Jackson Turner\***  
Sales Associate  
416 815 2394  
jackson.turner@cbre.com

**Teddy Taggart**  
Sales Representative  
416 847 3254  
teddy.taggart@cbre.com

\*Sales Representative

**CBRE**

This disclaimer shall apply to CBRE Limited, Real Estate Brokerage, and to all other divisions of the Corporation; to include all employees and independent contractors ("CBRE"). The information set out herein, including, without limitation, any projections, images, opinions, assumptions and estimates obtained from third parties (the "Information") has not been verified by CBRE, and CBRE does not represent, warrant or guarantee the accuracy, correctness and completeness of the Information. CBRE does not accept or assume any responsibility or liability, direct or consequential, for the Information or the recipient's reliance upon the Information. The recipient of the Information should take such steps as the recipient may deem necessary to verify the Information prior to placing any reliance upon the Information. The Information may change and any property described in the Information may be withdrawn from the market at any time without notice or obligation to the recipient from CBRE. CBRE and the CBRE logo are the service marks of CBRE Limited and/or its affiliated or related companies in other countries. All other marks displayed on this document are the property of their respective owners. All Rights Reserved.