

CORNER  
OF  
COLLEGE  
&  
OSSINGTON



831

COLLEGE STREET // TORONTO

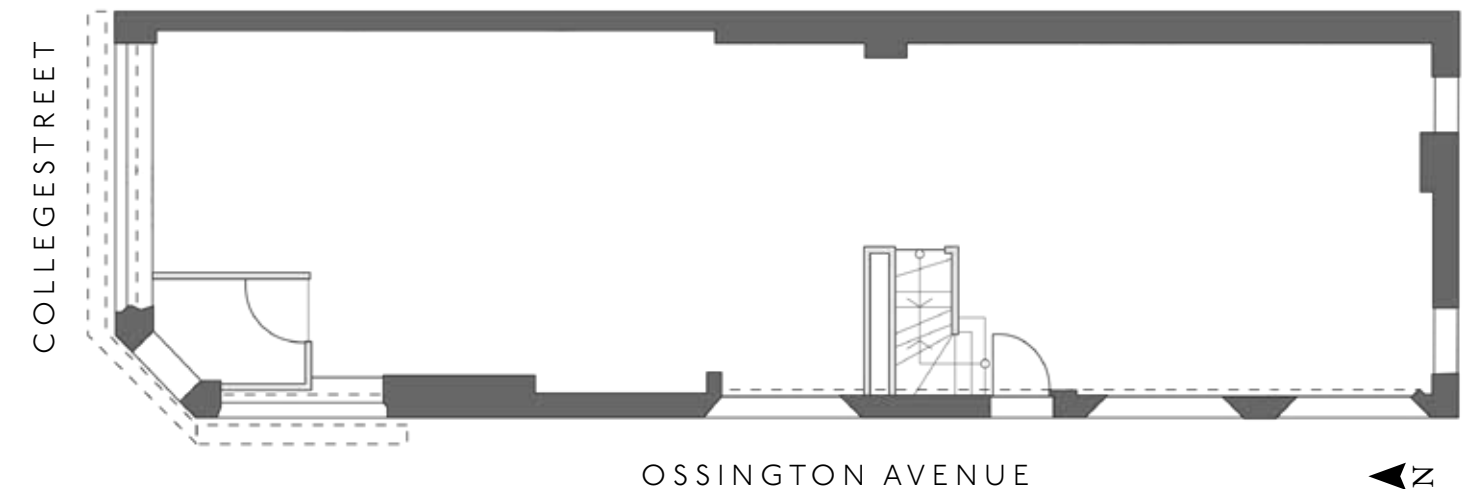


# 831

## COLLEGE STREET // TORONTO

### RETAIL OR OFFICE FOR LEASE

- Size:** 1,400 sq. ft.
  - Net Rent:** Contact Listing Agents
  - TMI:** \$15.00 per sq. ft.
  - Available:** Immediately
- ◆ High profile corner location at College Street and Ossington Avenue with heavy vehicular and pedestrian traffic
  - ◆ Located in the trendy Ossington Avenue and College node
  - ◆ Currently built out as a professional office
  - ◆ Suitable for both Office or Retail users
  - ◆ 2 parking spaces included





# LOCATION

## COLLEGE & OSSINGTON AVENUE

Located at the corner of College and Ossington Avenue in the popular Little Italy neighbourhood. 831 College is surrounded by local culinary favourites such as Bar Isabel, Starving Artist, Pray Tell and Bake Shoppe. National chains also neighbour the site including Metro, A&W, Shoppers Drug Mart and Starbucks. 831 College Street benefits from having TTC access at its front door and being surrounded by an affluent and dense residential population and is minutes from The Ossington Strip, Queen West, Trinity Bellwoods Park, The Annex and Kensington Market.



Average Household Income:  
**\$102,536\***



Estimated Population (2017)  
**33,826\***



Population Growth (2017-2022)  
**3.8%\***

\*Within 1km of 831 College Street





FOR MORE INFORMATION  
**CONTACT**

---

RETAIL

**Arlin Markowitz\***  
Senior Vice President  
416 815 2374  
arlin.markowitz@cbre.com

**Alex Edmison\***  
Vice President  
416 874 7266  
alex.edmison@cbre.com

**Jackson Turner\*\***  
Senior Associate  
416 815 2394  
jackson.turner@cbre.com

**Teddy Taggart**  
Sales Representative  
416 847 3254  
teddy.taggart@cbre.com

OFFICE

**Brian Porter\***  
Vice President  
416 847 3242  
brian.porter@cbre.com

**Callie Milavsky Osler**  
Sales Representative  
647 943 4163  
callie.osler@cbre.com

**CBRE**

\*Sales Representative, \*\*Broker

This disclaimer shall apply to CBRE Limited, Real Estate Brokerage, and to all other divisions of the Corporation; to include all employees and independent contractors ("CBRE"). The information set out herein, including, without limitation, any projections, images, opinions, assumptions and estimates obtained from third parties (the "Information") has not been verified by CBRE, and CBRE does not represent, warrant or guarantee the accuracy, correctness and completeness of the Information. CBRE does not accept or assume any responsibility or liability, direct or consequential, for the Information or the recipient's reliance upon the Information. The recipient of the Information should take such steps as the recipient may deem necessary to verify the Information prior to placing any reliance upon the Information. The Information may change and any property described in the Information may be withdrawn from the market at any time without notice or obligation to the recipient from CBRE. CBRE and the CBRE logo are the service marks of CBRE Limited and/or its affiliated or related companies in other countries. All other marks displayed on this document are the property of their respective owners. All Rights Reserved.