

CBRE

275  
KING EAST



6,411 SQ. FT. OF PREMIUM RETAIL FOR LEASE

CBRE LIMITED, REAL ESTATE BROKERAGE | 145 KING STREET WEST | SUITE 1100 | TORONTO, ON M5H 1J8 | 416 362 2244 | WWW.CBRE.CA





*Sleek,* CONCRETE & GLASS  
DOUBLE-HEIGHT BUILDING

## 275 King Street East

**SIZE:** GROUND: 3,473 sq. ft.  
MEZZANINE: 2,938 sq. ft.  
TOTAL: 6,411 sq. ft.

**NET RENT:** \$35.00 per sq. ft.

**ADDITIONAL RENT:** \$17.50 per sq. ft.

**AVAILABLE:** August 1, 2020

- COMMENTS:**
- Highly sought-after location on the best stretch of King Street East
  - Immediate proximity to several major office buildings, George Brown College and the St. Lawrence Market
  - Character space with a soaring double-height ceiling at entrance
  - Mezzanine level has access to both passenger elevator and freight elevator
  - Features a 24 ft. high loading dock with a large indoor area
  - One reserved underground parking space for \$250/month
  - Great fit for a wide array of commercial uses; retail showroom, fitness, office, fine dining restaurant, etc.

RETAIL FOR LEASE

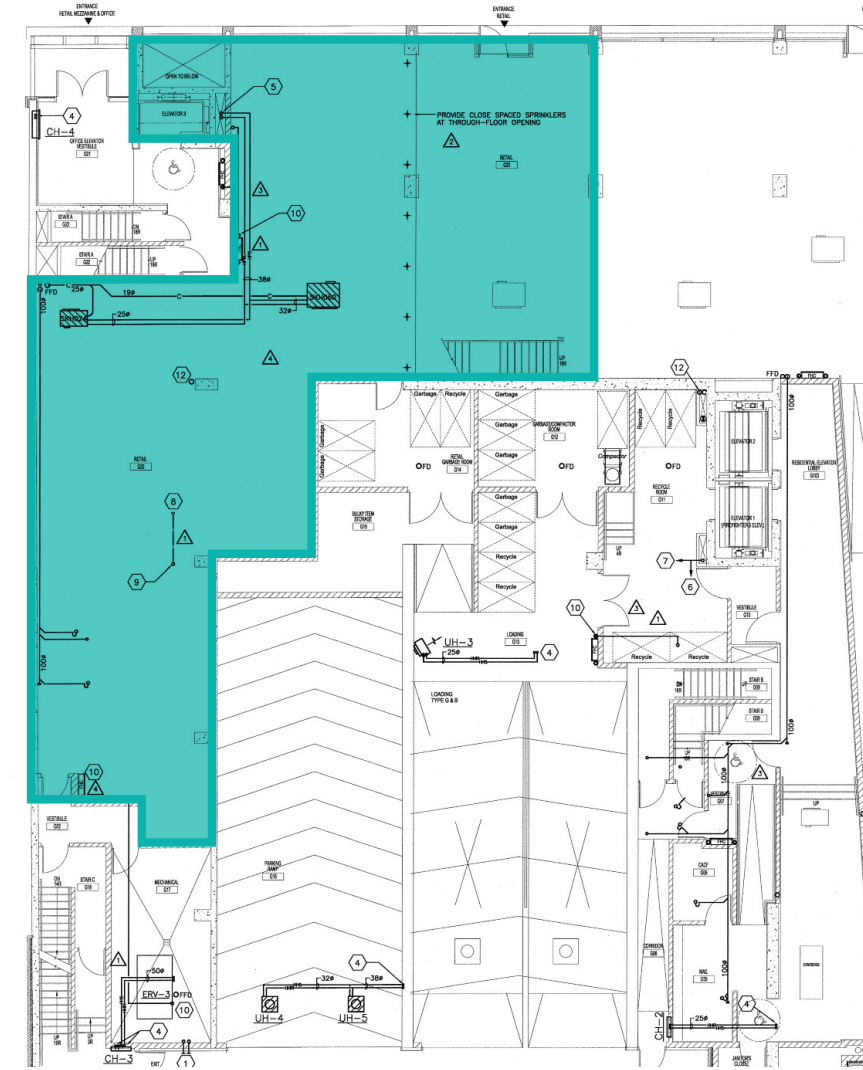




# GROUND

3,473 SQ.FT.

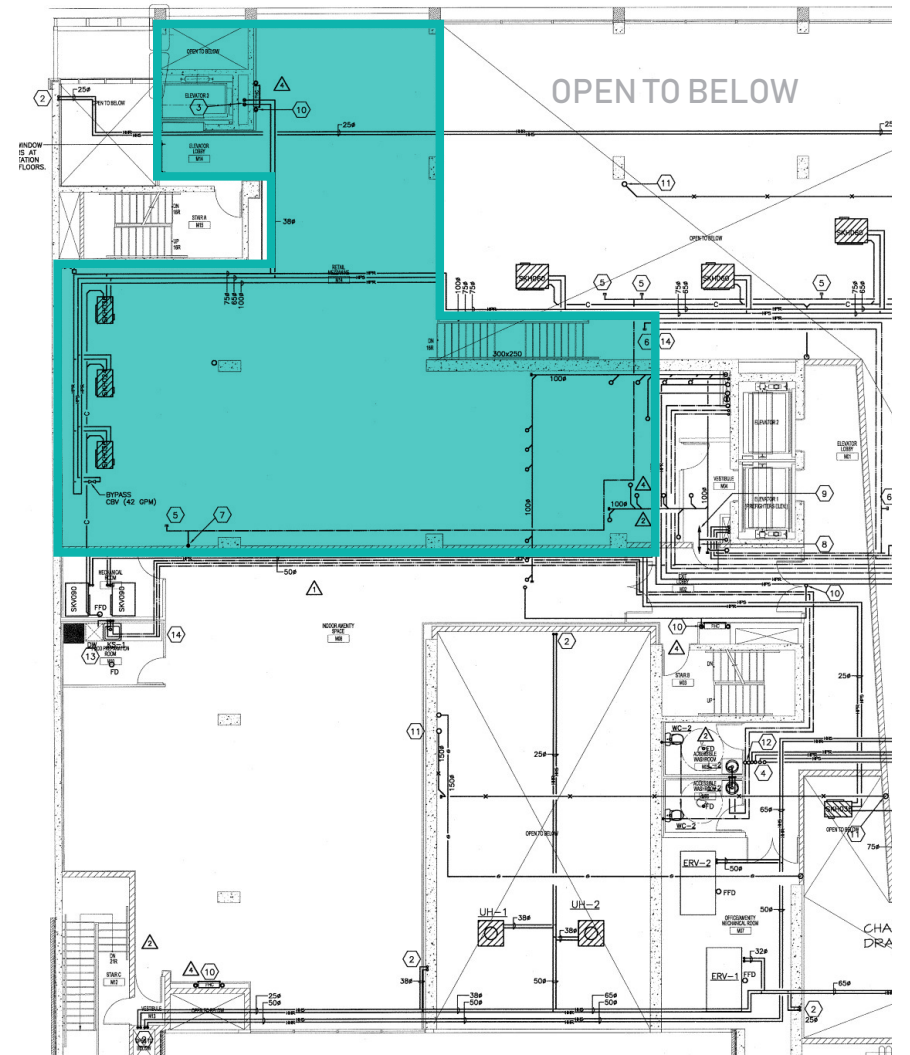
King Street East



# MEZZANINE

2,938 SQ.FT.

King Street East



RETAIL FOR LEASE



# INTERIOR IMAGES



RETAIL FOR LEASE



## The Location

275 King Street East is located on the south west corner of King East and Princess Street in the heart of Toronto's King East Design District (KEDD). The KEDD is a neighbourhood in the heart of Old Toronto, encompassing many thriving businesses including numerous furniture design stores, restaurants cafes and independent shops. This neighbourhood is home to many of Toronto's oldest and most beautiful heritage buildings.

275 King Street East is adjacent to George Brown's downtown campus and around the corner from the St. Lawrence Market, a top tourist attraction and known as one of the world's best food markets.

## Neighbourhood Growth

The neighbourhood has seen many new developments completed and underway in the Corktown, East Bayfront and Cabbagetown areas. The area surrounding 275 King East is experiencing one of the highest growth rates in commercial and residential growths in Canada. Some of the most notable developments within the immediate area include First Gulf's 60 acre, 12 million sq. ft. East Harbour Development and Google's Sidewalk Labs project set to add 2,500 residential units.

## Connectivity

The Property is located directly on the 504 King Street West streetcar line and is within walking distance to the King subway station. The Financial Core is a 5 minute streetcar ride away or less than 10 minutes walk. Access to the Gardiner Expressway is minutes away via Jarvis Street.



RETAIL FOR LEASE





# CONTACT

**ARLIN MARKOWITZ\***

Senior Vice President

416 815 2374

[arlin.markowitz@cbre.com](mailto:arlin.markowitz@cbre.com)

**ALEX EDMISON\***

Senior Vice President

416 874 7266

[alex.edmison@cbre.com](mailto:alex.edmison@cbre.com)

**JACKSON TURNER\*\***

Associate Vice President

416 815 2394

[jackson.turner@cbre.com](mailto:jackson.turner@cbre.com)

**TEDDY TAGGART**

Sales Representative

416 847 3254

[teddy.taggart@cbre.com](mailto:teddy.taggart@cbre.com)

\*Sales Representative, \*\*Broker

# CBRE

This disclaimer shall apply to CBRE Limited, Real Estate Brokerage, and to all other divisions of the Corporation; to include all employees and independent contractors ("CBRE"). The information set out herein, including, without limitation, any projections, images, opinions, assumptions and estimates obtained from third parties (the "Information") has not been verified by CBRE, and CBRE does not represent, warrant or guarantee the accuracy, correctness and completeness of the Information. CBRE does not accept or assume any responsibility or liability, direct or consequential, for the Information or the recipient's reliance upon the Information. The recipient of the Information should take such steps as the recipient may deem necessary to verify the Information prior to placing any reliance upon the Information. The Information may change and any property described in the Information may be withdrawn from the market at any time without notice or obligation to the recipient from CBRE. CBRE and the CBRE logo are the service marks of CBRE Limited and/or its affiliated or related companies in other countries. All other marks displayed on this document are the property of their respective owners. All Rights Reserved.