

# 565 King STREET WEST



Photograph by Ben Rahn/A-Frame Inc.



**CBRE**

# Property Details

---

GROUND FLOOR

1,315 sq. ft.

LOWER LEVEL

560 sq. ft.

NET RENT

Contact Listing Agent

TMI

\$31.00 per sq. ft. (2020)

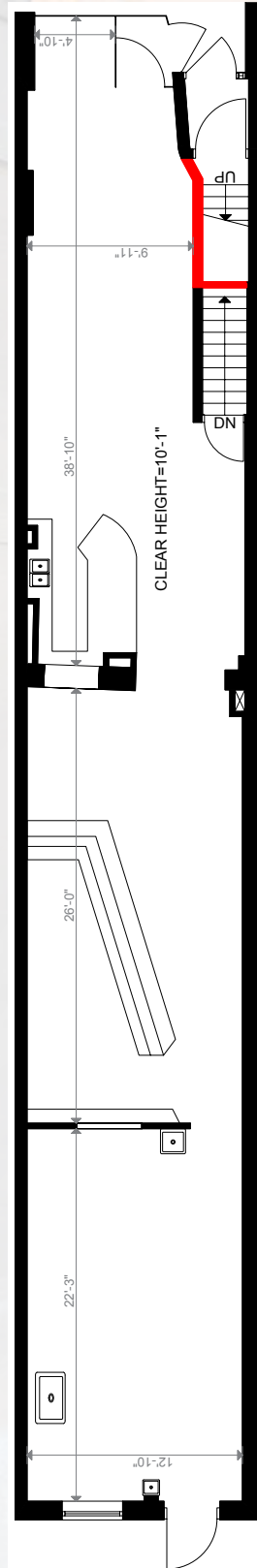
AVAILABLE

Immediately

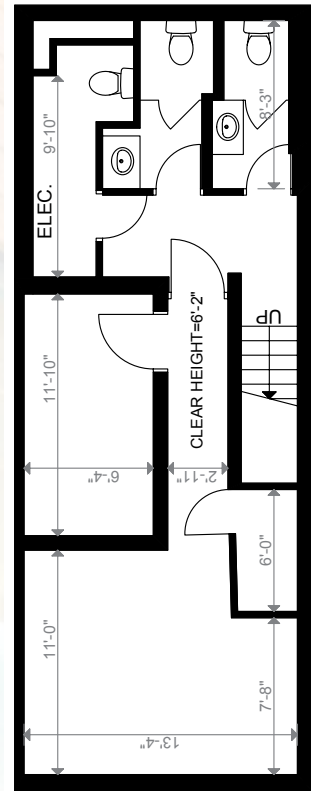


# Floorplans

King Street West



GROUND FLOOR



LOWER LEVEL

**CBRE**



\*Within 3km of subject property as per 2019 statistics



**306,137**  
Total Population\*



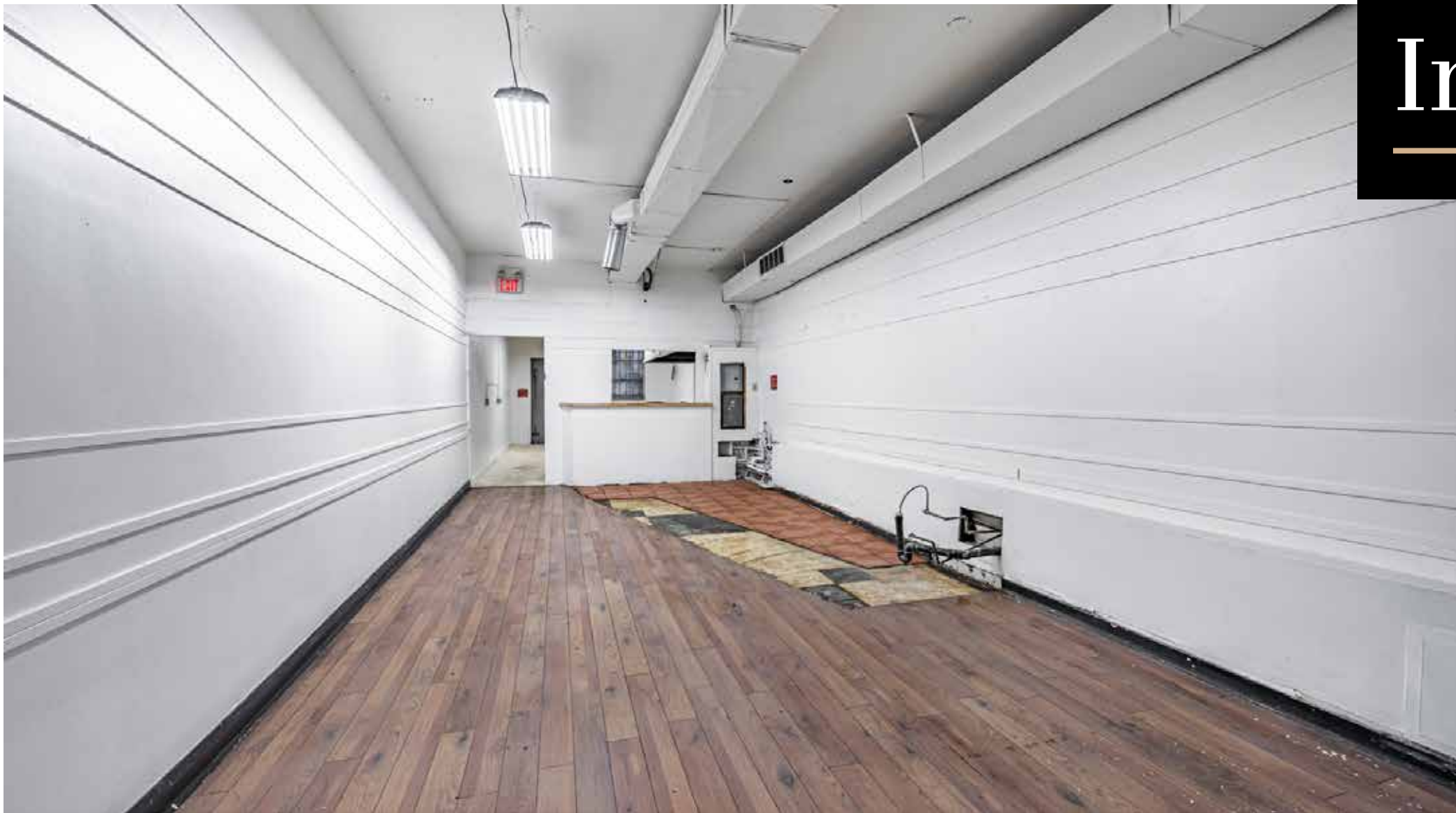
**\$125,641**  
Avg. Household Income\*



**\$108,453**  
Expenditure per Household\*



# Interior Photos



# The Location

King Street West is the city's only true 24/7 district, benefiting from an electric atmosphere of live, work and play pedestrian traffic.

King Street West is Toronto's most dynamic retail environment, known for the city's largest concentration of restaurants, theatres and nightlife. It has seen an increase in the diversification of retail uses, leveraging one of the largest residential development cycles in Canadian history. 565 King Street West is located on the best section of the strip, surrounded by some of Toronto's most popular restaurants and bars.

The Downtown West Toronto office market has the lowest vacancy rate in North America, boasting millions of SF of character brick-and-beam space, adding excellent foot fall to the King West retail environment.



# Area Map



**Strong  
Retailer  
Co-Tenancy**





## Contact

**Arlin Markowitz\***  
Senior Vice President  
416.815.2374

[arlin.markowitz@cbre.com](mailto:arlin.markowitz@cbre.com)

**Jackson Turner\*\***  
Associate Vice President  
416.815.2394

[jackson.turner@cbre.com](mailto:jackson.turner@cbre.com)

**Alex Edmison\***  
Senior Vice President  
416.874.7266

[alex.edmison@cbre.com](mailto:alex.edmison@cbre.com)

**Teddy Taggart\***  
Sales Associate  
416.847.3254

[teddy.taggart@cbre.com](mailto:teddy.taggart@cbre.com)

\*Sales Representative, \*\*Broker



**CBRE**

This disclaimer shall apply to CBRE Limited, Real Estate Brokerage, and to all other divisions of the Corporation; to include all employees and independent contractors ("CBRE"). The information set out herein, including, without limitation, any projections, images, opinions, assumptions and estimates obtained from third parties (the "Information") has not been verified by CBRE, and CBRE does not represent, warrant or guarantee the accuracy, correctness and completeness of the Information. CBRE does not accept or assume any responsibility or liability, direct or consequential, for the Information or the recipient's reliance upon the Information. The recipient of the Information should take such steps as the recipient may deem necessary to verify the Information prior to placing any reliance upon the Information. The Information may change and any property described in the Information may be withdrawn from the market at any time without notice or obligation to the recipient from CBRE. CBRE and the CBRE logo are the service marks of CBRE Limited and/or its affiliated or related companies in other countries. All other marks displayed on this document are the property of their respective owners. All Rights Reserved.