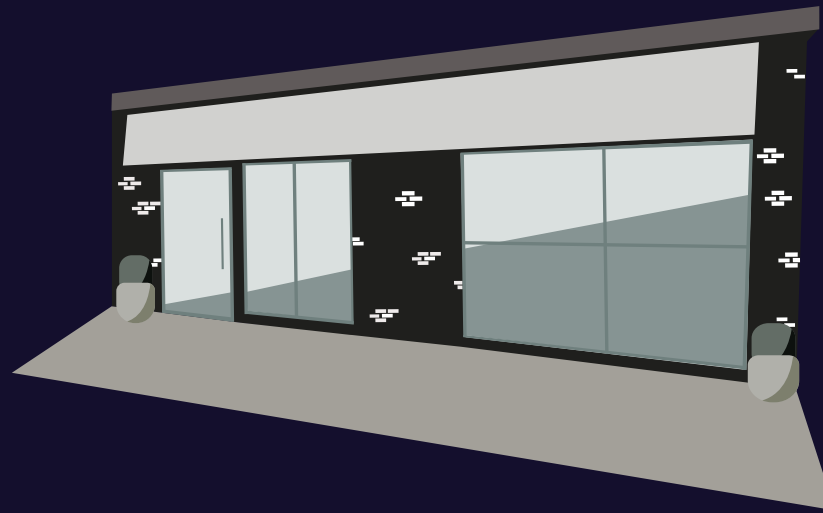


1287

# BLOOR STREET WEST

---



RETAIL FOR LEASE AT LANDSDOWNE ROAD AND BLOOR STREET WEST

# PROPERTY DETAILS

SIZE: 1,300 sq. ft. + basement

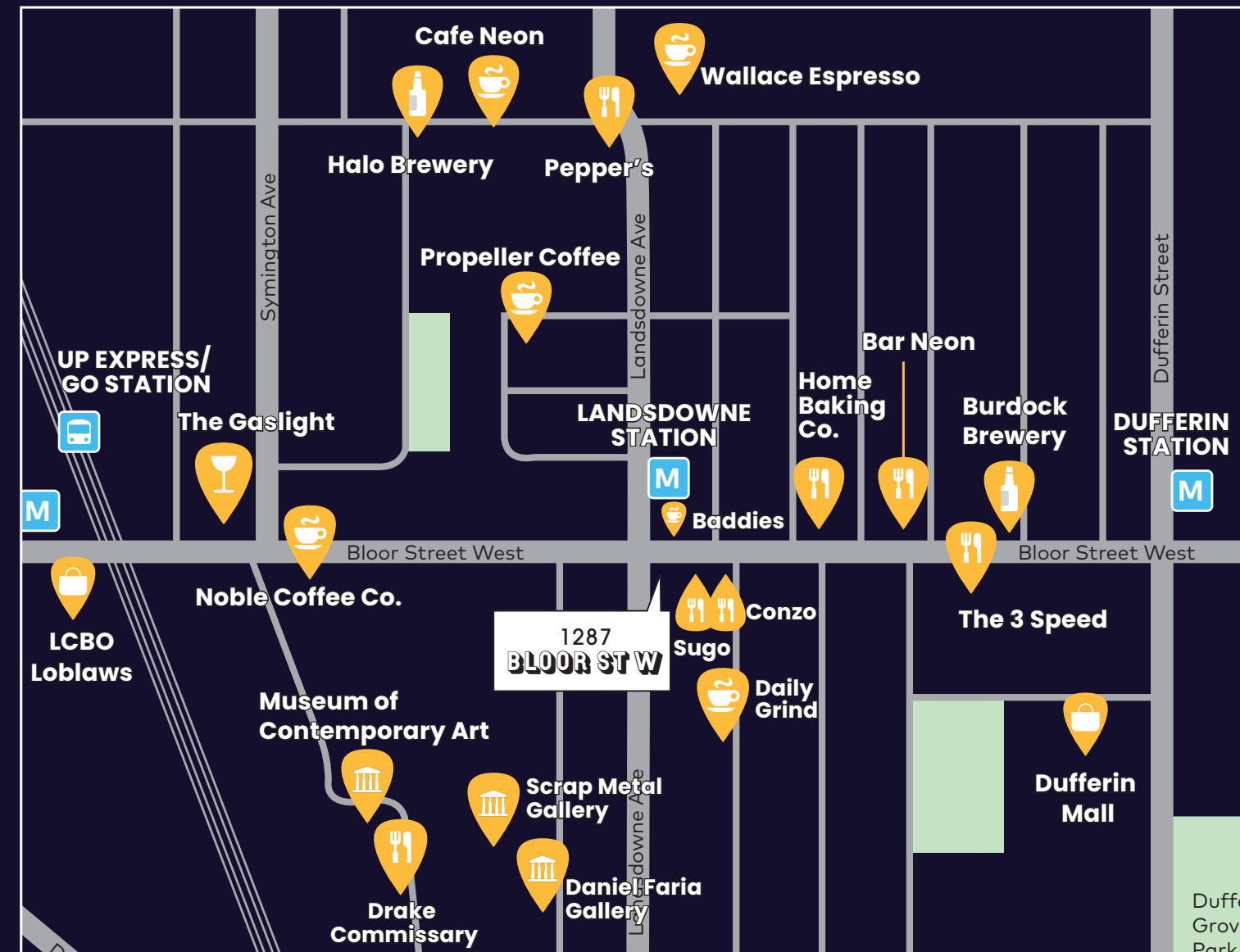
TMI: \$10.00 per sq. ft.

RENT: Please call to discuss

- At the corner of Bloor St. W. and Landsdowne Ave
- ~10,000 pedestrians walk by the site daily
- Across the street from Landsdowne subway station
- Walking distance to Bloor GO station and UP Express
- Surrounded by numerous large developments
- Neighbouring retailers include Sugo, Baddies Coffee, Daily Grind and Propeller Coffee

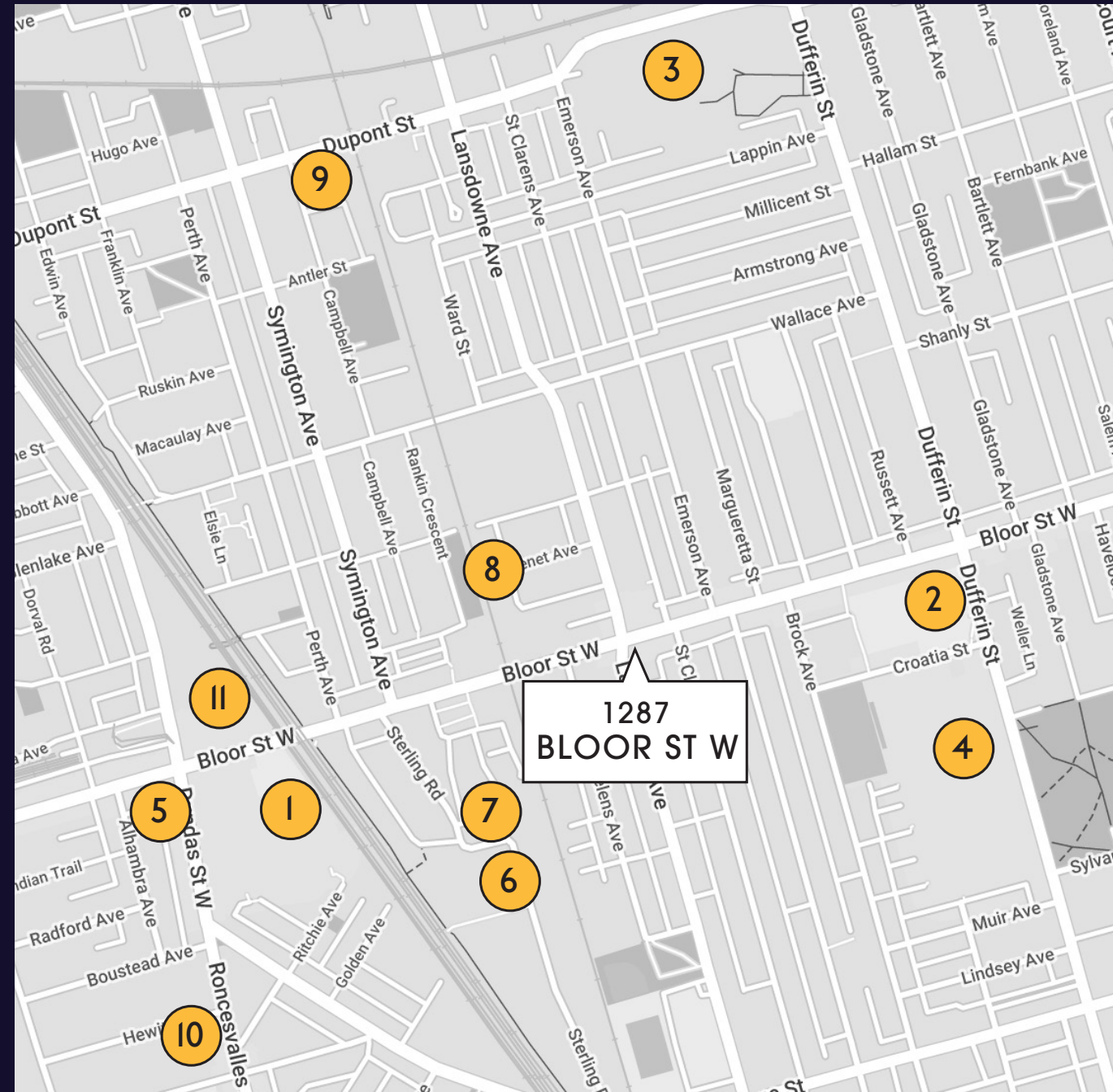


## NEIGHBOURING TENANTS



1287 Bloor Stret West is located where Bloordale Village meets the Junction Triangle. The site is well connected via the Bloor-Danforth subway line and the Bloor UP Express/GO Station. The neighbourhood is known for it's cafes, art galleries, laid-back restaurants, breweries, bars and it's bustling nightlife. The area also has a growing working population with many new offices opening in the area including Spaces, FreshBooks and Ubisoft.

# DEVELOPMENT MAP



**1** 2280 DUNDAS WEST  
Residential, Office, Retail  
42,36,36,22,20,20,14,10,7 storeys



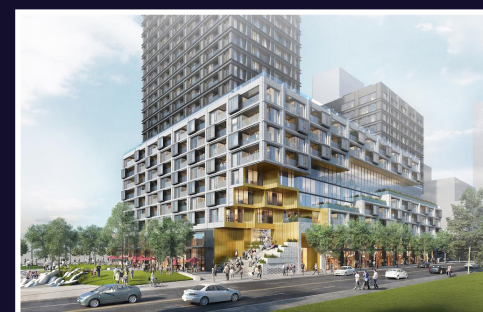
**2** BLOOR & DUFFERIN  
Residential, Office, Retail  
47,44,30,25,11,11,6 storeys



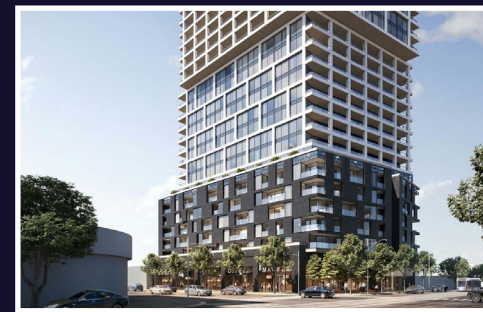
**3** GALLERIA ON THE PARK  
Residential, Office, Retail, Park  
42,36,22,19,19,17,15,12,10,3 storeys



**4** DUFFERIN GROVE VILLAGE  
Residential, Retail  
39,35,23,14 storeys



**5** 1540 BLOOR STREET WEST  
Residential, Retail  
25 storeys



**6** T3 STERLING ROAD  
Office, Public Space  
8 storeys



**7** 201 STERLING ROAD  
Residential, Retail  
17 storeys



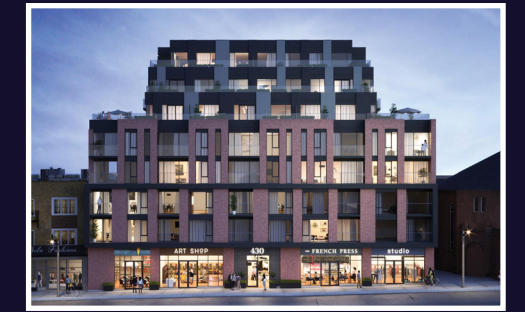
**8** 77 WADE  
Office, Retail  
7 storeys



**9** 299 CAMPBELL AVE  
Residential, Retail  
14 storeys



**10** THE RONCY  
Residential, Retail  
8 storeys



**11** 2376 DUNDAS STREET WEST  
Residential, Retail  
24 storeys



# 1287 BLOOR STREET WEST

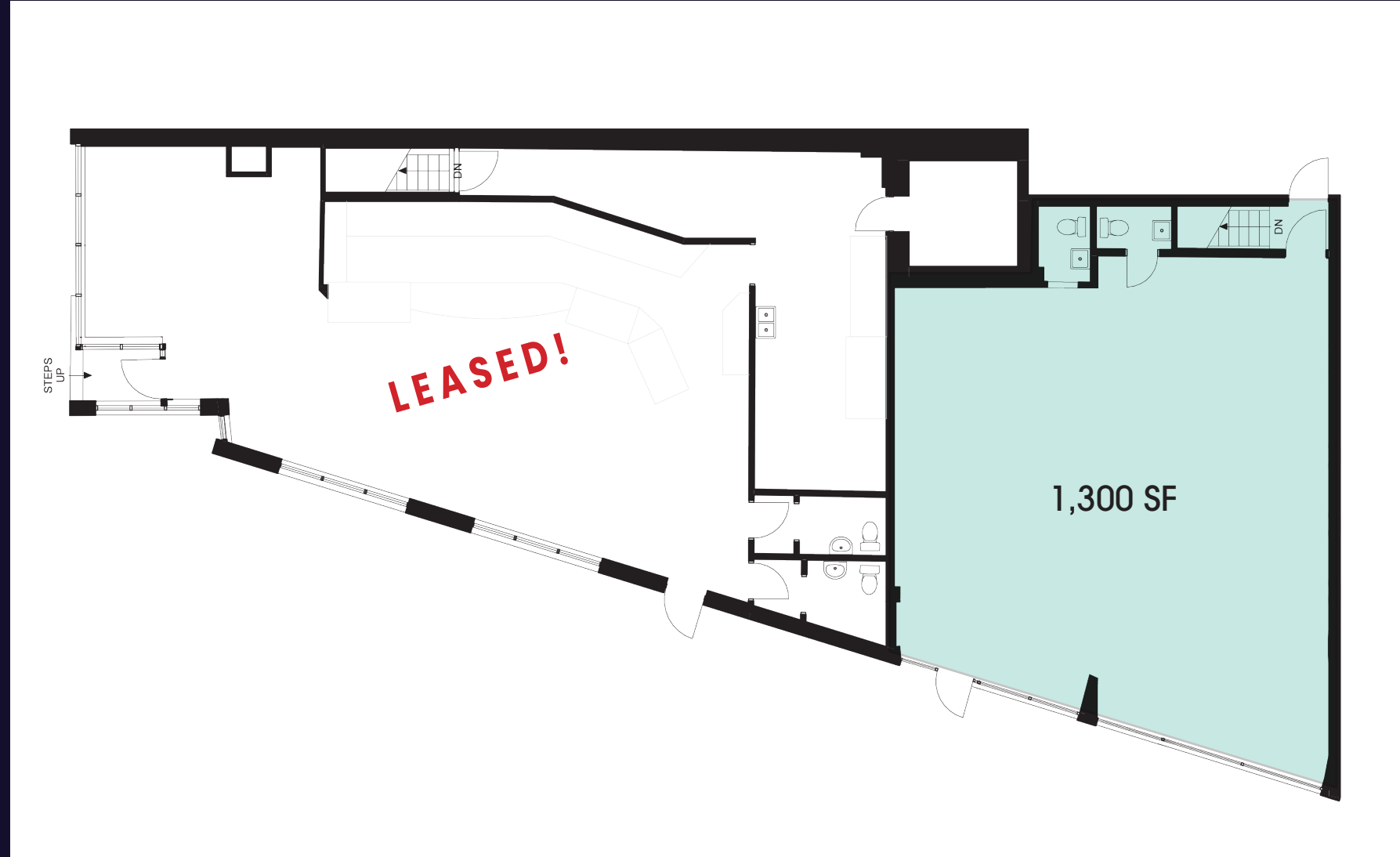


OPPORTUNITY  
TO BRAND  
THIS WALL

VIEW FROM THE CORNER OF BLOOR  
STREET WEST & LANDSDOWNE AVE

# FLOOR PLAN

BLOOR STREET WEST



LANDSDOWNE AVENUE



## CONTACT

**ARLIN MARKOWITZ\***  
Senior Vice President  
416 815 2374  
arlin.markowitz@cbre.com

**ALEX EDMISON\***  
Senior Vice President  
416 874 7266  
alex.edmison@cbre.com

**JACKSON TURNER\*\***  
Associate Vice President  
416 815 2394  
jackson.turner@cbre.com

**TEDDY TAGGART\***  
Sales Associate  
416 847 3254  
teddy.taggart@cbre.com

\*Sales Representative    \*\*Broker

This disclaimer shall apply to CBRE Limited, Real Estate Brokerage, and to all other divisions of the Corporation; to include all employees and independent contractors ("CBRE"). The information set out herein, including, without limitation, any projections, images, opinions, assumptions and estimates obtained from third parties (the "Information") has not been verified by CBRE, and CBRE does not represent, warrant or guarantee the accuracy, correctness and completeness of the Information. CBRE does not accept or assume any responsibility or liability, direct or consequential, for the Information or the recipient's reliance upon the Information. The recipient of the Information should take such steps as the recipient may deem necessary to verify the Information prior to placing any reliance upon the Information. The Information may change and any property described in the Information may be withdrawn from the market at any time without notice or obligation to the recipient from CBRE. CBRE and the CBRE logo are the service marks of CBRE Limited and/or its affiliated or related companies in other countries. All other marks displayed on this document are the property of their respective owners. All Rights Reserved.