

THIRTY-THREE *BLOOR STREET EAST*

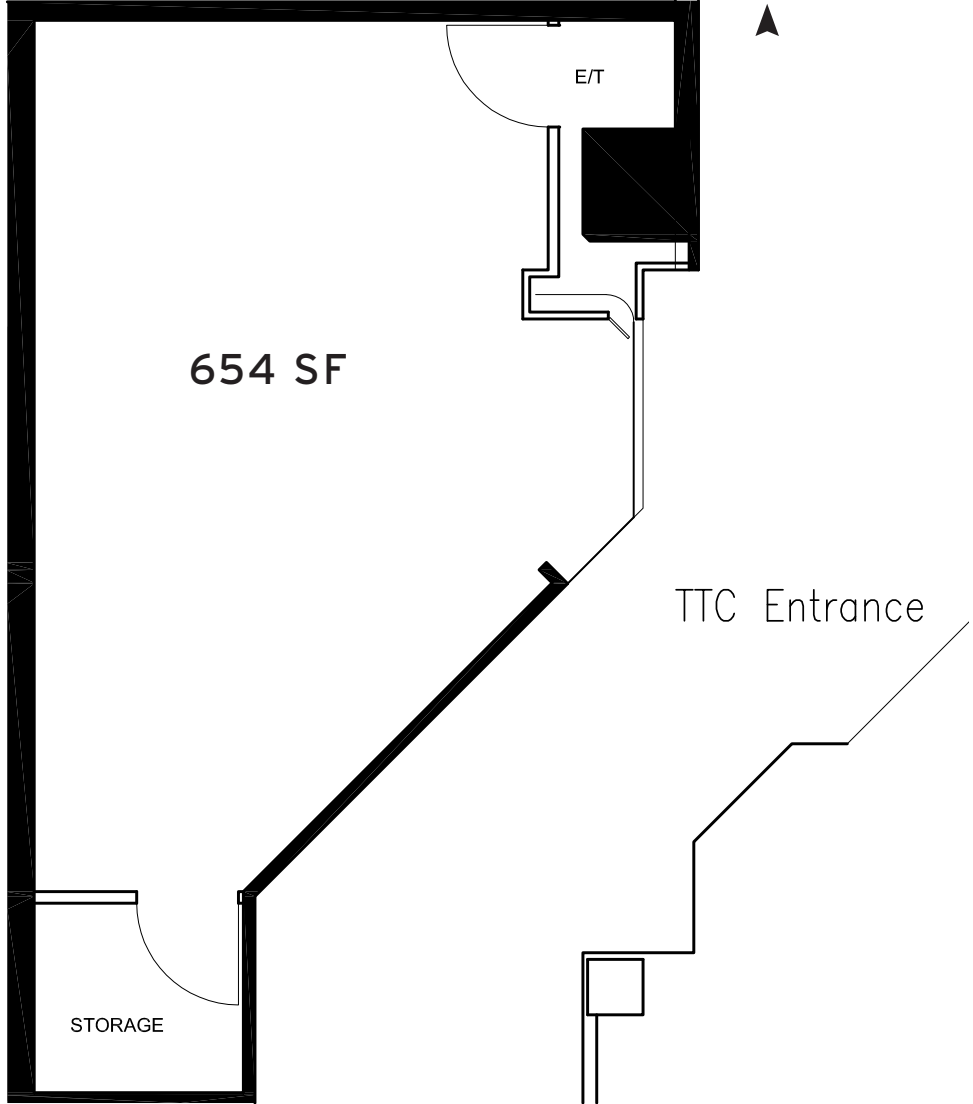


CONCOURSE RETAIL OPPORTUNITY AT THE CORNER OF BLOOR  YONGE

CBRE Limited, Real Estate Brokerage | 145 King Street West | Suite 1100 | Toronto, ON M5H 1J8 | 416 362 2244 | www.cbre.ca



FLOOR PLAN



33 BLOOR STREET EAST - CONCOURSE

Size: 654 sq. ft.
Net Rent: Please contact listing agents
TMI: \$22.08 per sq. ft.
Available: Immediately

- Highly visible space across from the entrance to the TTC Bloor-Yonge subway station
- Ground floor and façade of the building has been completely renovated featuring a state-of-the-art, double-height retail façade
- Join other building tenants including Cafe Landwer, Mos Mos, Lenscrafters and WeWork

BLOOR STREET

33 Bloor Street East is located front and centre in the Bloor-Yorkville node, Canada's most prestigious luxury retail node. The Bloor corridor is recognized internationally as one of the top ten shopping destinations in the world, with high-end fashion uses dominating the street front.

Retailing on Bloor Street is characterized as primarily high-end, including strong concentration of flagship stores for both global brands and Canadian retail icons such as Holt Renfrew & Harry Rosen.

The area boasts 2.3 million sq. ft. of retail space, 1.5 million of which is street-front. Retail sales performance along the Bloor Street corridor often exceeds \$2,500 per sq. ft.



DEMOGRAPHICS



\$122,877

Average Household Income*



65,296

Population*



9.1%

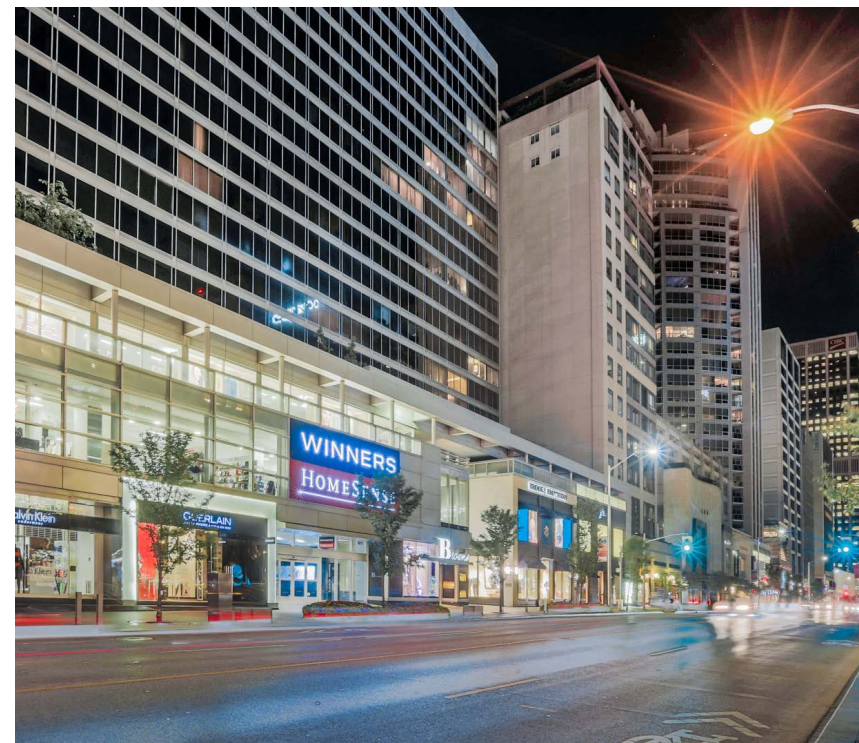
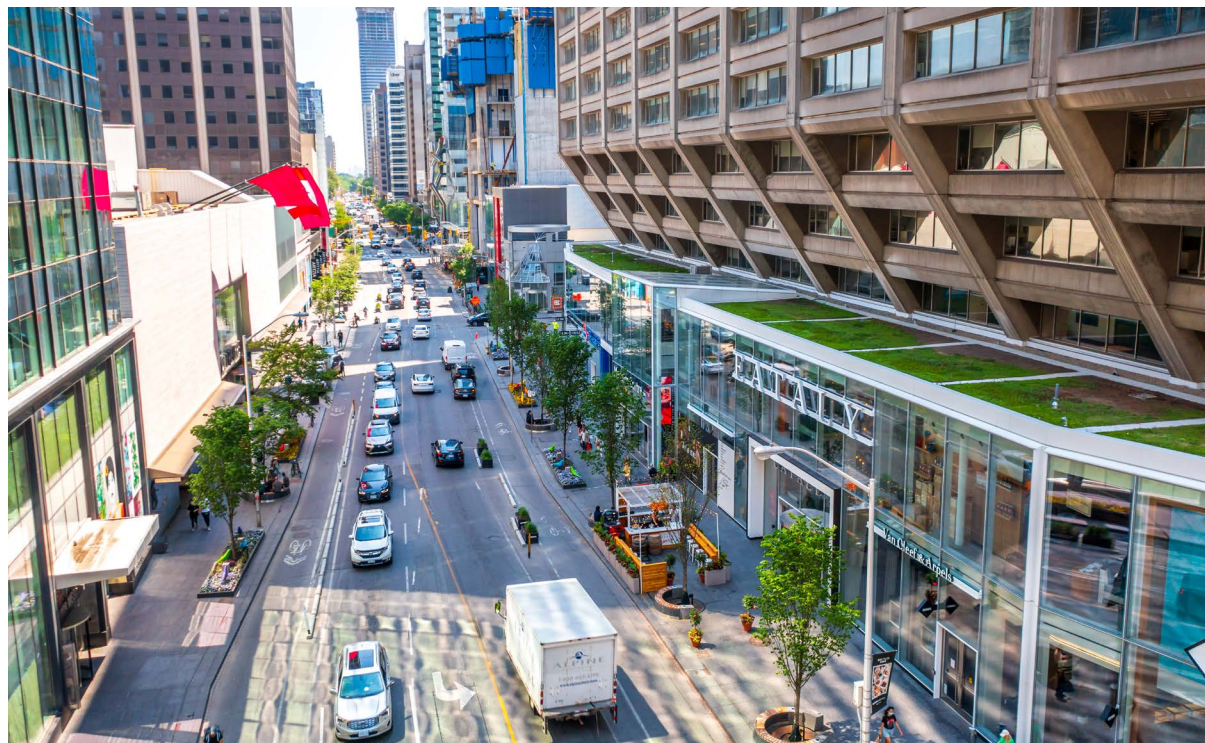
Population Change (2018-2023)*



36

Median Age*

*Within 1km of 33 Bloor Street East





CONTACT

Arlin Markowitz*
Executive Vice President
416 815 2374
arlin.markowitz@cbre.com

Alex Edmison*
Senior Vice President
416 874 7266
alex.edmison@cbre.com

Jackson Turner**
Senior Vice President
416 815 2394
jackson.turner@cbre.com

Teddy Taggart*
Vice President
416 847 3254
teddy.taggart@cbre.com

*Sales Representative
**Broker

CBRE

This disclaimer shall apply to CBRE Limited, Real Estate Brokerage, and to all other divisions of the Corporation; to include all employees and independent contractors ("CBRE"). The information set out herein, including, without limitation, any projections, images, opinions, assumptions and estimates obtained from third parties (the "Information") has not been verified by CBRE, and CBRE does not represent, warrant or guarantee the accuracy, correctness and completeness of the Information. CBRE does not accept or assume any responsibility or liability, direct or consequential, for the Information or the recipient's reliance upon the Information. The recipient of the Information should take such steps as the recipient may deem necessary to verify the Information prior to placing any reliance upon the Information. The Information may change and any property described in the Information may be withdrawn from the market at any time without notice or obligation to the recipient from CBRE. CBRE and the CBRE logo are the service marks of CBRE Limited and/or its affiliated or related companies in other countries. All other marks displayed on this document are the property of their respective owners. All Rights Reserved.