

530 YONGE STREET



CBRE

*Sales Representative
**Broker

Teddy Taggart
Sales Representative
Urban Retail Team
416 847 3254
teddy.taggart@cbre.com

Jackson Turner**
Sales Associate
Urban Retail Team
416 815 2394
jackson.turner@cbre.com

Alex Edmison*
Vice President
Urban Retail Team
416 874 7266
alex.edmison@cbre.com

Arlin Markowitz*
Senior Vice President
Urban Retail Team
416 815 2374
arlin.markowitz@cbre.com

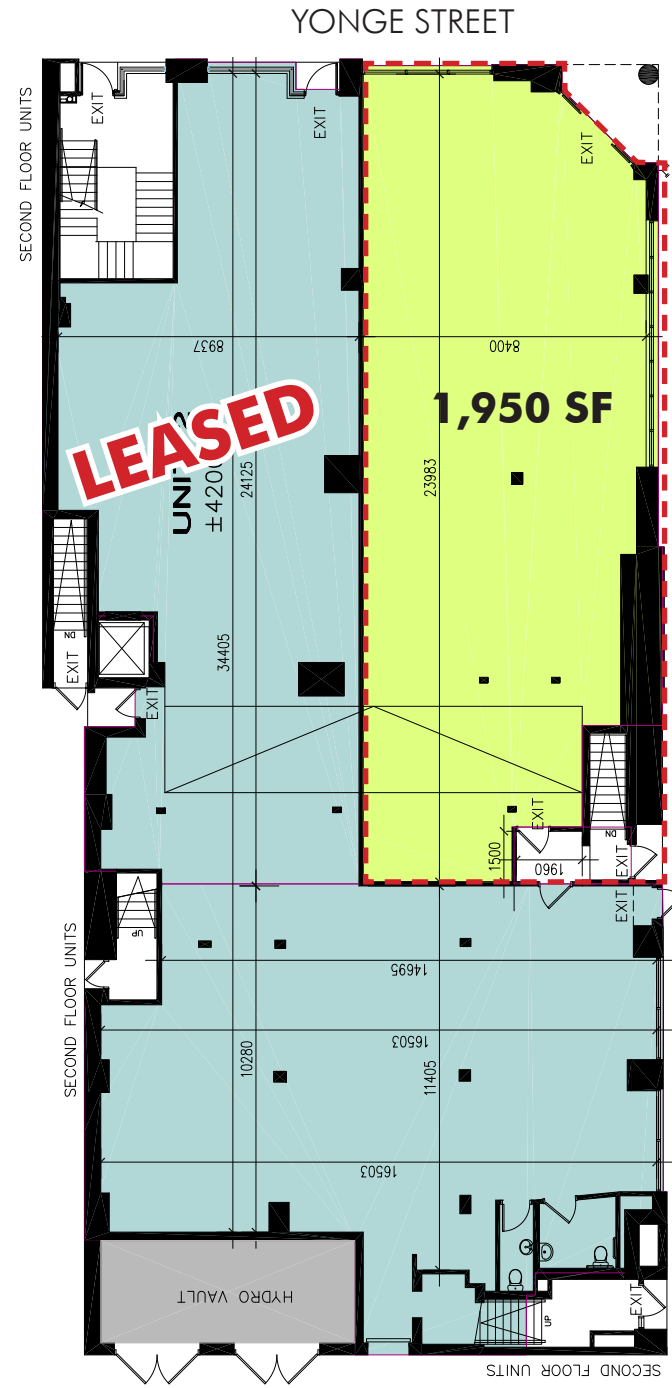


ABOUT THE SPACE

SIZE:	1,950 sq. ft.
AVAILABILITY:	Immediate
NET RENT:	\$65.00 per sq. ft.
ADDITIONAL RENT:	\$34.00 per sq. ft.

- Corner exposure
- Upgraded electrical (400 Amps) and HVAC (10 ton)
- Steps from Wellesley and College subway stations
- 15 ft + clear ceilings
- Neighbouring retailers include Starbucks, LCBO, RBC Royal Bank, Second Cup, and Tim Hortons

FLOOR PLAN



BREADALBANE STREET

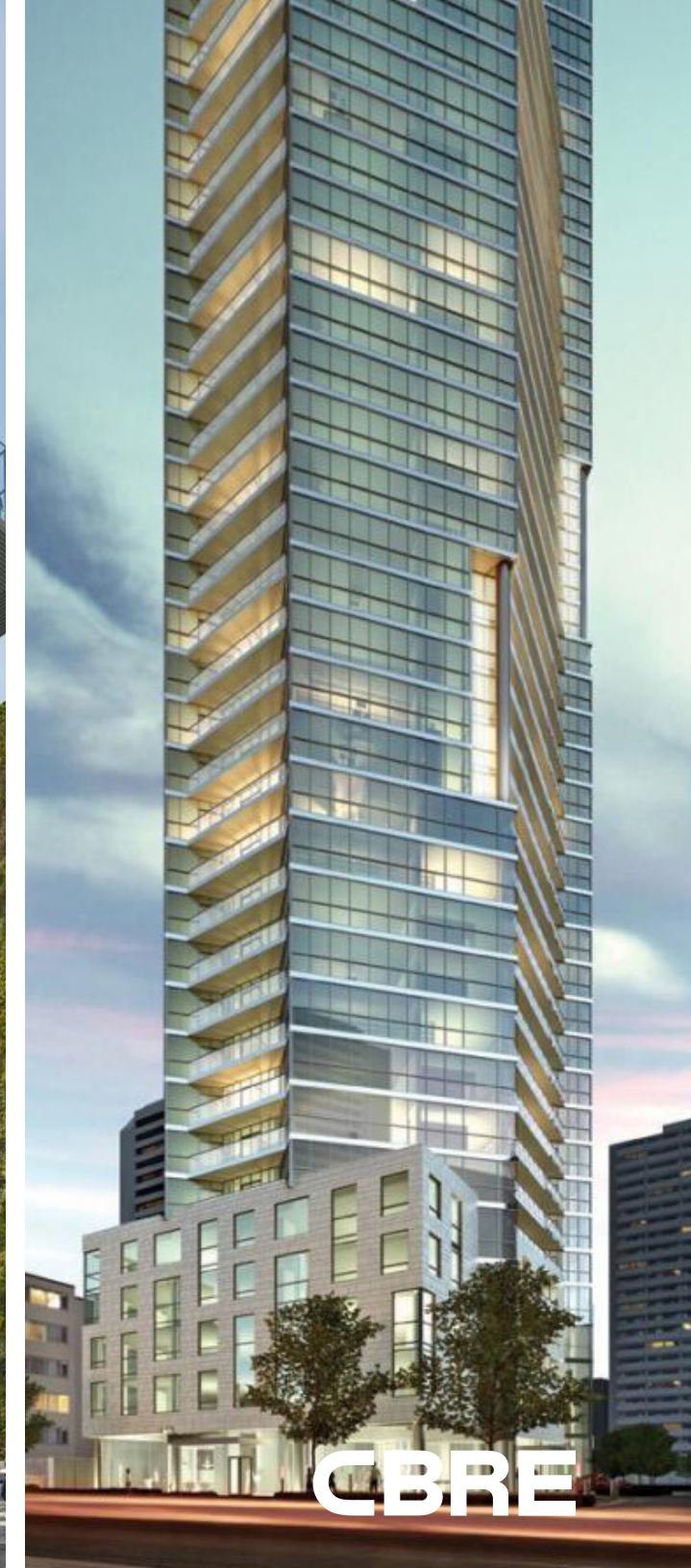
INTERIOR



CBRE

YONGE STREET CORRIDOR

530 Yonge Street is located directly in the middle of the Yonge Street Corridor, between Wellesley and College Street. Yonge Street is currently undergoing a major transformation of tremendous residential growth, with over 1,400 storeys of condos proposed along the corridor.



CBRE

ACTIVE DEVELOPMENTS IN THE AREA

- 1 **Yorkville Park**
Pre-Construction
25 stories, 200 units
Completion: 2018
- 2 **80 Bloor St West**
Pre-Construction
66 stories, 565 units
Completion: TBD
- 3 **50 Bloor St West**
Pre-Construction
70 stories, 600 units
Completion: TBD
- 4 **Cumberland Terrace**
Pre-Construction
54 stories, 575 units
Completion: Feb 2018
- 5 **The One**
Pre-Construction
80 stories, 416 units
Completion: TBD
- 6 **One Bloor East**
Under Construction
76 stories, 732 units
Completion: 2016
- 7 **CHAZ Yorkville**
Completed
47 stories, 526 units
Completion: 2015
- 8 **Casa II Condos**
Under Construction
56 stories, 478 units
Completion: 2016
- 9 **Casa III Condos**
Pre-Construction
55 stories, 578 units
Completion: Dec 2017
- 10 **The Manhattan**
Pre-Construction
47 stories, 408 units
Completion: TBD
- 11 **U Condominiums**
Complete
56/46 stories, 775 units
Completion: 2015
- 12 **8 Gloucester**
Pre-Construction
29 stories, 211 units
Completion: TBD
- 13 **The Clover on Yonge**
Pre-Construction
44 stories, 528 units
Completion: Nov 2019
- 14 **1Thousand Bay**
Under Construction
32 stories, 478 units
Completion: 2016
- 15 **Totem Condos**
Pre-Construction
18 stories, 120 units
Completion: TBD
- 16 **50 at Wellesley Station**
Under Construction
37 stories, 365 units
Completion: 2017
- 17 **Five St. Joseph**
Completed
48 stories, 539 units
Completion: 2015
- 18 **Vox Condos**
Under Construction
35 stories, 330 units
Completion: May 2017
- 19 **Teahouse Condos**
Pre-Construction
22/51 stories, 960 units
Completion: 2018
- 20 **Halo Residences**
Pre-Construction
45 stories, 423 units
Completion: Nov 2019
- 21 **Karma Condos**
Under Construction
50 stories, 495 units
Completion: 2016
- 22 **YC Condos**
Pre-Construction
66 stories, 600 units
Completion:
- 23 **2 Carlton**
Pre-Construction
72 stories, 1100 units
Completion: TBD
- 24 **2-8 St. Thomas**
Construction
23 stories, 267 units
Completion: 2017
- 25 **Eight Cumberland**
Pre-Construction
51 stories, 371 units
Completion:
- 26 **771 Yonge**
Pre-Construction
48 stories, 257 units
Completion:
- 27 **Wellesley on the Park**
Pre-Construction
60 stories, 739 units
Completion: 2018



**For More Information,
Please Contact:**

Arlin Markowitz*
Senior Vice President
416 815 2374
arlin.markowitz@cbre.com

Alex Edmison*
Vice President
416 874 7266
alex.edmison@cbre.com

Jackson Turner**
Sales Associate
416 815 2394
jackson.turner@cbre.com

Teddy Taggart
Sales Representative
416 847 3254
teddy.taggart@cbre.com

*Sales Representative, **Broker

CBRE

This disclaimer shall apply to CBRE Limited, Real Estate Brokerage, and to all other divisions of the Corporation; to include all employees and independent contractors ("CBRE"). The information set out herein, including, without limitation, any projections, images, opinions, assumptions and estimates obtained from third parties (the "Information") has not been verified by CBRE, and CBRE does not represent, warrant or guarantee the accuracy, correctness and completeness of the Information. CBRE does not accept or assume any responsibility or liability, direct or consequential, for the Information or the recipient's reliance upon the Information. The recipient of the Information should take such steps as the recipient may deem necessary to verify the Information prior to placing any reliance upon the Information. The Information may change and any property described in the Information may be withdrawn from the market at any time without notice or obligation to the recipient from CBRE. CBRE and the CBRE logo are the service marks of CBRE Limited and/or its affiliated or related companies in other countries. All other marks displayed on this document are the property of their respective owners. All Rights Reserved.