

7

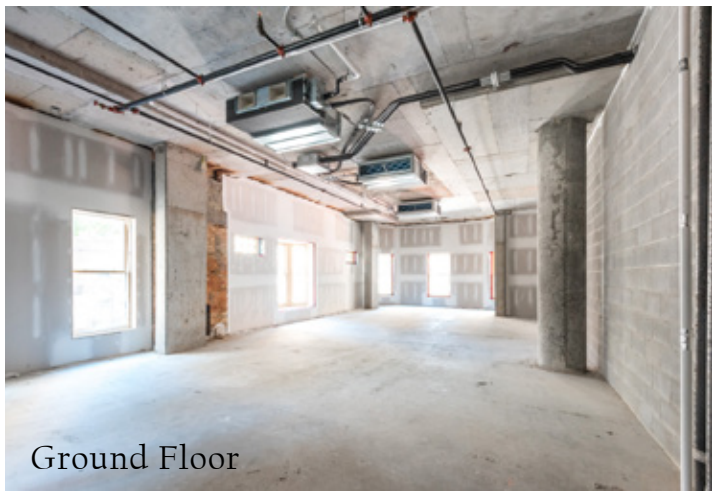
ST. THOMAS



LUXURY RETAIL FOR LEASE BLOOR-YORKVILLE

CBRE Limited, Real Estate Brokerage | 145 King Street West, 1100 | Toronto | 416 362 2244

CBRE



Ground Floor



Second Floor



Third Floor





7 ST. THOMAS

GROUND FLOOR:	1,510 sq.ft.
SECOND FLOOR:	1,878 sq.ft.
THIRD FLOOR:	<u>1,754 sq.ft.</u>
TOTAL:	5,051 sq.ft.
NET RENT:	TBD
TMI:	\$30 per sq.ft.
AVAILABLE:	Immediately

Floors can be leased together or individually, vertical transportation between floors is available

Restaurants are permitted with patio opportunities

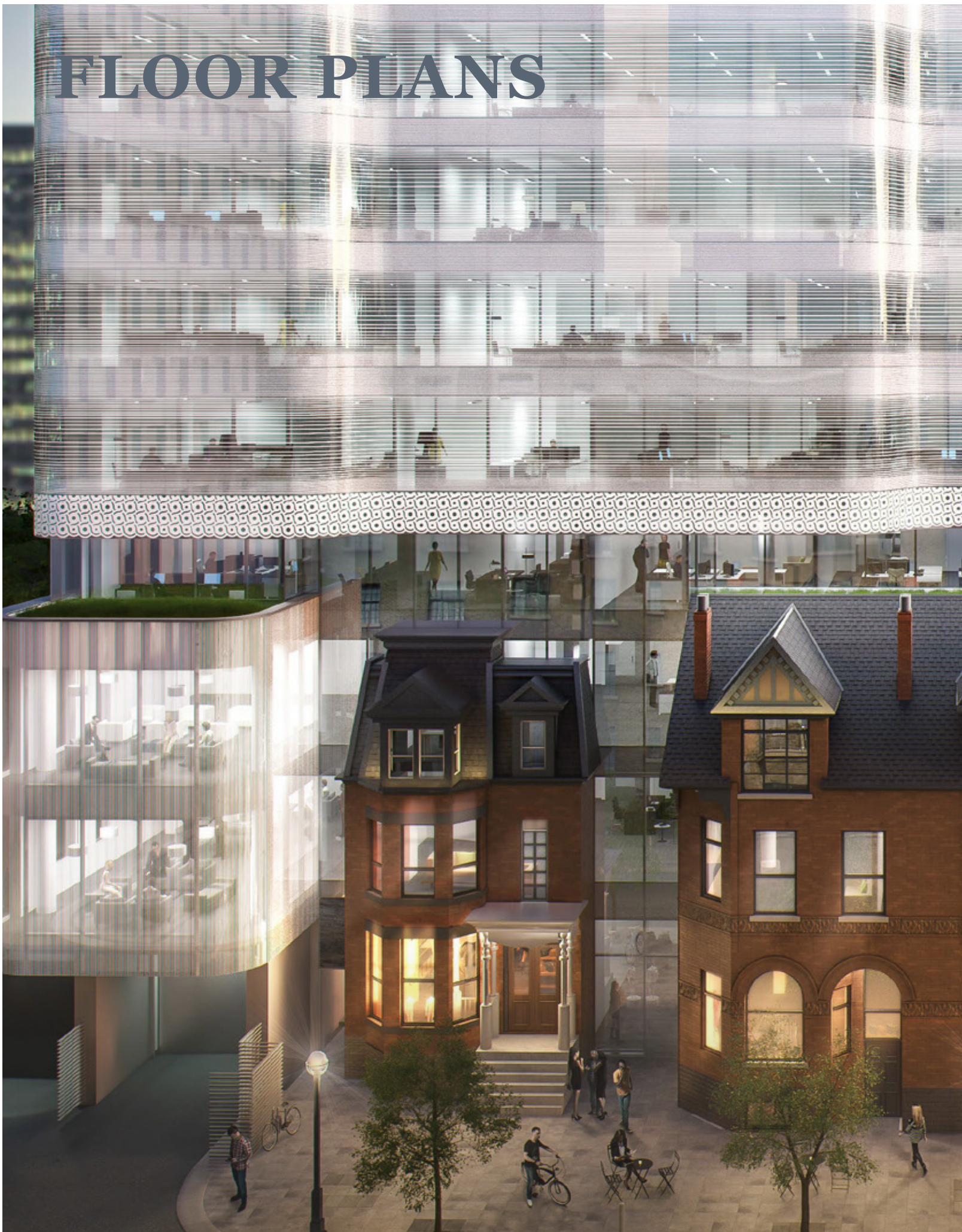
VICTORIAN ELEGANCE MEETS MODERN DESIGN

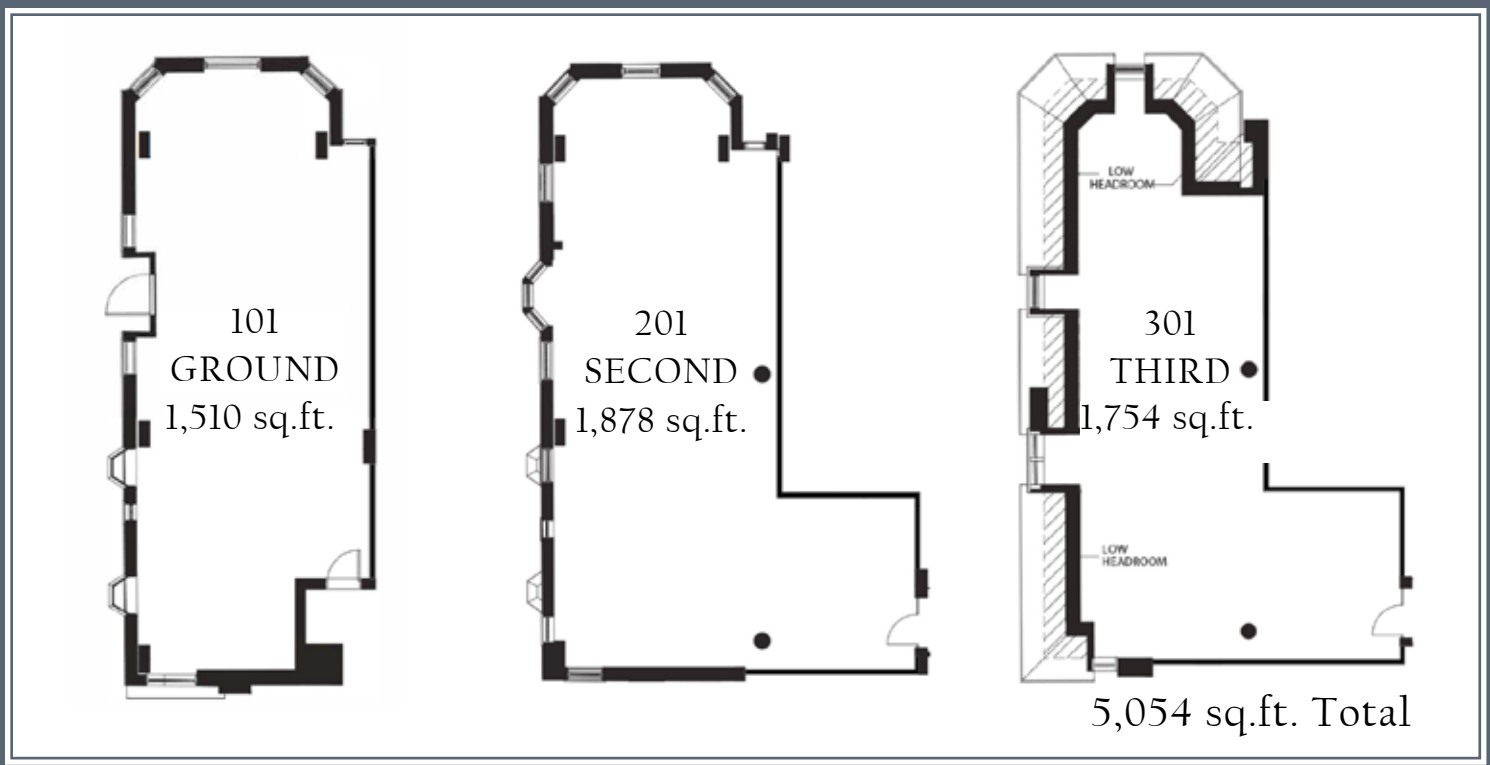


14.5'
Ceilings

CBRE

FLOOR PLANS





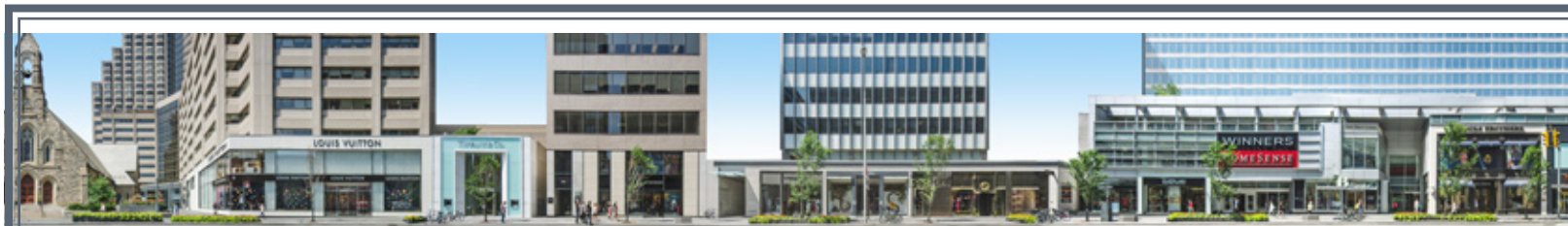


7 ST. THOMAS

BAY STREET

BLOOR STREET WEST

YORKVILLE AVENUE



Avenue Rd



TIFFANY & CO.

BURBERRY

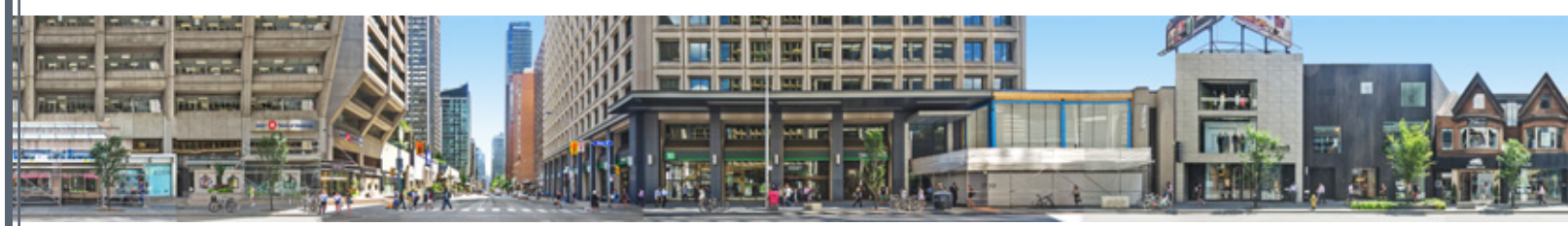
INTERMIX

GUCCI

GUERLAIN

Browns

Brooks Brothers



Indigo

Bay Street

SEPHORA

BOSS

COS

OpM

MAC



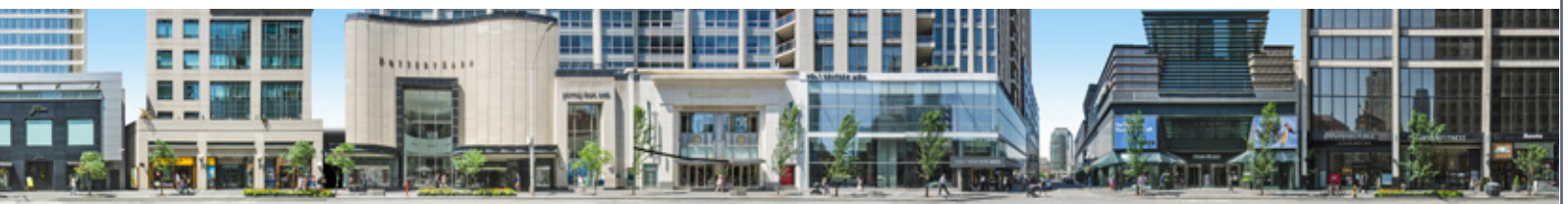
THE LOCATION



7 ST. THOMAS

7 St. Thomas Street is located just a few steps south of the best section of Bloor Street West and is clearly visible from Bloor. Located across the street from the iconic Windsor Arms Hotel, views of the future Hermès flagship and Holt Renfrew Men on Bloor can be seen from the property. Other neighbouring tenants include Dolce & Gabbana, Rolex, Dior, Tiffany & Co., Coach, Harry Rosen and COS.

The Bloor node has 2.3 million square feet of retail space and boasts the countries strongest PSF sales in the \$2,500 range for the strips best tenants. The vehicular and pedestrian traffic volumes are amongst the best in the city and are 48 and 41 thousand respectively.



J.CREW

L'OCCITANE
EN PROVENCE

POTTERYBARN

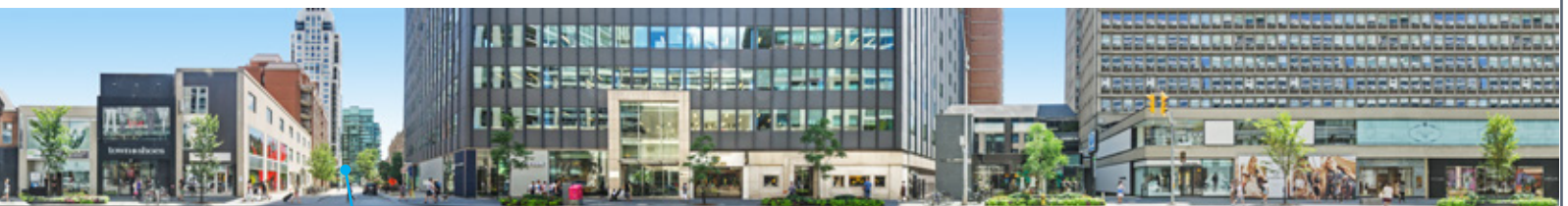
HERMÈS
PARIS



Bellair St

HARRY ROSEN

BANANA REPUBLIC



VICTORINOX
SWISS ARMY



COLE HAAN

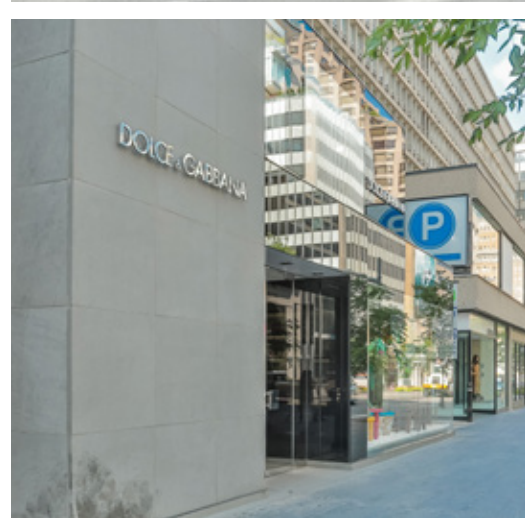
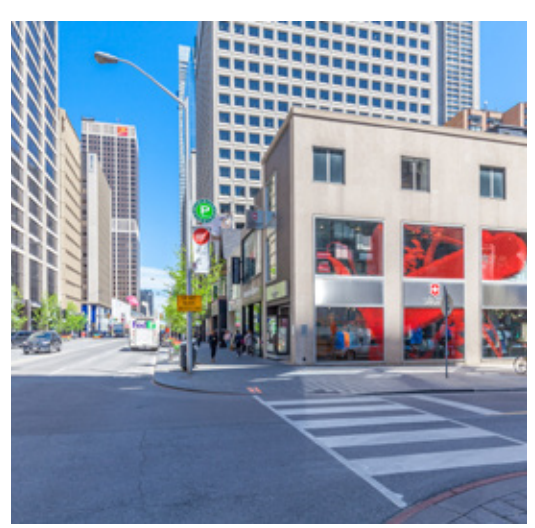
ROLEX

D&G
DOLCE & GABBANA

Dior



CBRE





BLOOR-YORKVILLE



49,889 people
within 1 km of 7 St. Thomas Street



12% increase
in population between 2016-2021,
bringing the population up to 54,944



\$125,106
average household income, and expected
to increase to \$150,479 by 2021





Arlin Markowitz*
Senior Vice President
Urban Retail Team
416 815 2374
arlin.markowitz@cbre.com

Alex Edmison*
Vice President
Urban Retail Team
416 874 7266
alex.edmison@cbre.com

Jackson Turner
Sales Representative
Urban Retail Team
416 815 2394
jackson.turner@cbre.com

Teddy Taggart
Sales Representative
Urban Retail Team
416 847 3254
teddy.taggart@cbre.com

*Sales Representative

This disclaimer shall apply to CBRE Limited, Real Estate Brokerage, and to all other divisions of the Corporation; to include all employees and independent contractors ("CBRE"). The information set out herein, including, without limitation, any projections, images, opinions, assumptions and estimates obtained from third parties (the "Information") has not been verified by CBRE, and CBRE does not represent, warrant or guarantee the accuracy, correctness and completeness of the Information. CBRE does not accept or assume any responsibility or liability, direct or consequential, for the information or the recipient's reliance upon the Information. The recipient of the Information should take such steps as the recipient may deem necessary to verify the Information prior to placing any reliance upon the Information. The Information may change and any property described in the Information may be withdrawn from the market at any time without notice or obligation to the recipient from CBRE. CBRE and the CBRE logo are the service marks of CBRE Limited and/or its affiliated or related companies in other countries. All other marks displayed on this document are the property of their respective owners. All Rights Reserved.

CBRE