

# Bloor 19

INCREDIBLE CORNER RETAIL FOR LEASE AT BLOOR & BALUMTO  
*IN THE HEART OF THE BLOOR-YONGE NODE*



**CBRE**





ARTIST'S RENDERING OF PROPOSED REDEVELOPMENT OF 19 BLOOR

# Bloor 19

Size:           Ground:                   3,100 sq. ft.-3,300 sq. ft.  
                   Optional Mezzanine:   1,500-2,600 sq. ft.  
                   Lower Level:           1,800 sq. ft.

Available: Immediately

## Contact the listing team for more information

- Approximately 33 ft. of Bloor Street frontage and 100 ft. of frontage on Balmuto Street
- Next door to the revitalized Manulife Centre, home to Canada's first Eataly
- Other neighbouring tenants include Holt Renfrew, Birks, Aritzia, Alo Yoga and Lululemon

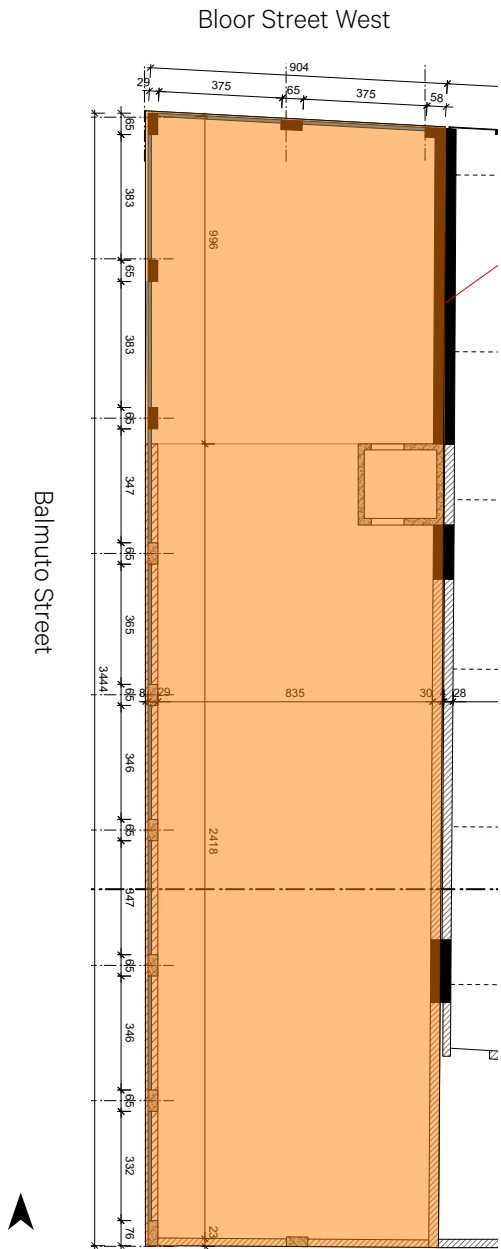
**CBRE**



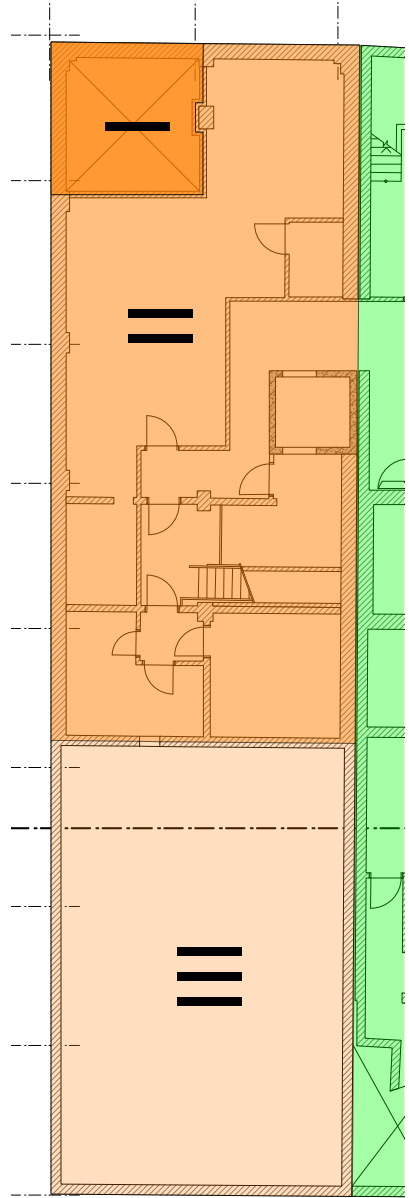


# FLOOR PLANS

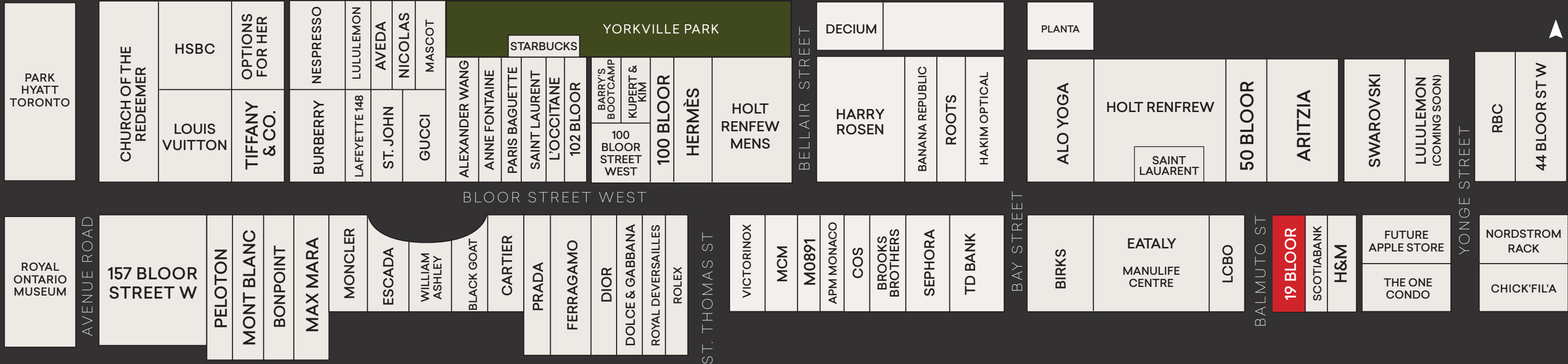
GROUND FLOOR  
3,100-3,300 SF



LOWER LEVEL  
1,800 SF









  
Click here to watch  
neighbourhood video



19  
BLOOR

NORDSTROM RACK

EATALY

HOLT RENFREW

FOUR SEASONS HOTEL

ROYAL ONTARIO MUSEUM

UNIVERSITY OF TORONTO

HAZELTON HOTEL

M  
BLOOR-YONGE

BLOOR-DANFORTH SUBWAY LINE

BAY  
M

M  
MUSEUM

M  
ST. GEORGE

CBRE



# DEMOGRAPHICS



**\$130,554**

Average Household Income\*



**42,773**

Daytime Population\*



**13.6%**

Population Change (2016-2021)\*



**36**

Median Age\*

\*Within a 500 metre radius of 19 Bloor Street West







## CONTACT

**ARLIN MARKOWITZ\***

Executive Vice President

416 815 2374

[arlin.markowitz@cbre.com](mailto:arlin.markowitz@cbre.com)

**ALEX EDMISON\***

Senior Vice President

416 874 7266

[alex.edmison@cbre.com](mailto:alex.edmison@cbre.com)

**JACKSON TURNER\*\***

Senior Vice President

416 815 2394

[jackson.turner@cbre.com](mailto:jackson.turner@cbre.com)

**TEDDY TAGGART\***

Associate Vice President

416 847 3254

[teddy.taggart@cbre.com](mailto:teddy.taggart@cbre.com)

**EMILY EVERETT\***

Sales Representative

647 943 4185

[emily.everett@cbre.com](mailto:emily.everett@cbre.com)

\*Sales Representative \*\*Broker

# CBRE

This disclaimer shall apply to CBRE Limited, Real Estate Brokerage, and to all other divisions of the Corporation; to include all employees and independent contractors ("CBRE"). The information set out herein, including, without limitation, any projections, images, opinions, assumptions and estimates obtained from third parties (the "Information") has not been verified by CBRE, and CBRE does not represent, warrant or guarantee the accuracy, correctness and completeness of the Information. CBRE does not accept or assume any responsibility or liability, direct or consequential, for the Information or the recipient's reliance upon the Information. The recipient of the Information should take such steps as the recipient may deem necessary to verify the Information prior to placing any reliance upon the Information. The Information may change and any property described in the Information may be withdrawn from the market at any time without notice or obligation to the recipient from CBRE. CBRE and the CBRE logo are the service marks of CBRE Limited and/or its affiliated or related companies in other countries. All other marks displayed on this document are the property of their respective owners. All Rights Reserved.