

**CBRE**

PRIME RETAIL  
SPACE FOR LEASE

Arlin Markowitz | Jackson Turner

416 362 2244

  
IMPACT EQUITY  
OWNED AND MANAGED BY IMPACT EQUITY

**CBRE**

200 SF AVAILABLE  
FOR LEASE



**450**  
*Adelaide St West*

# Property Details

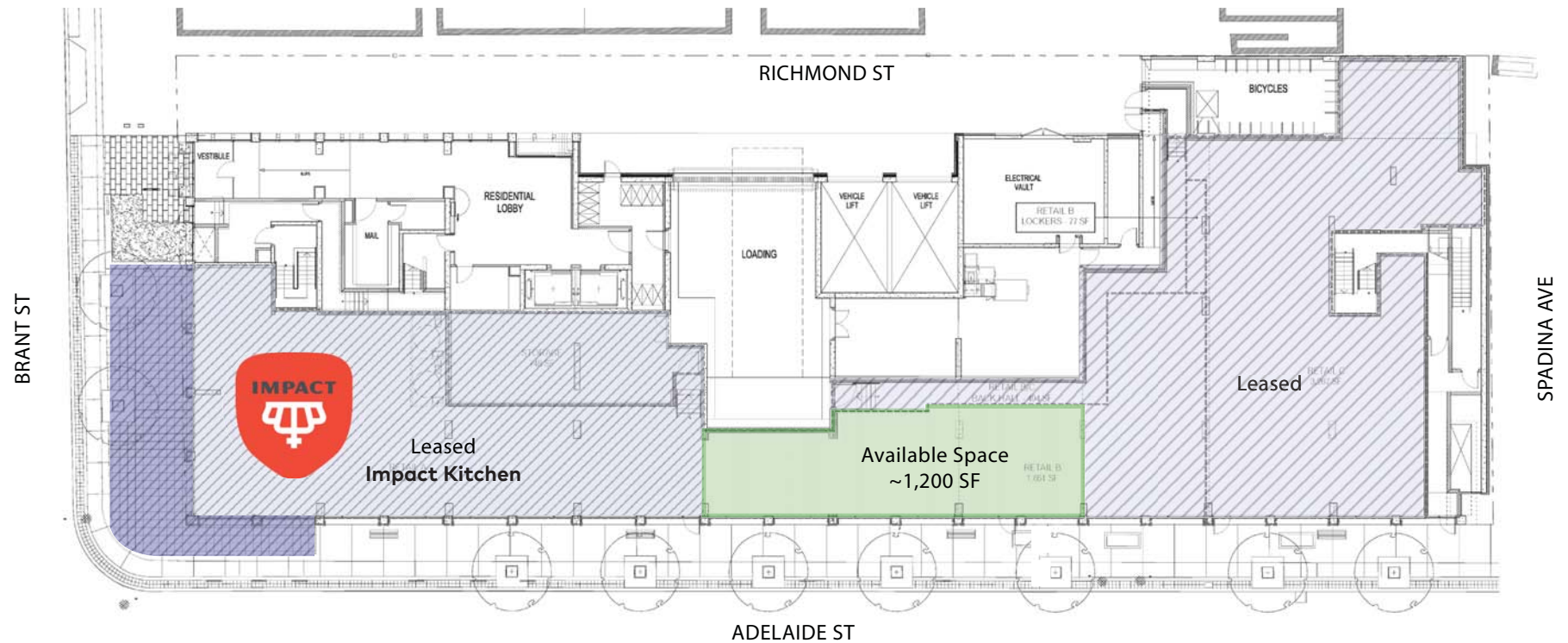
Size: 1,200 sq.ft.

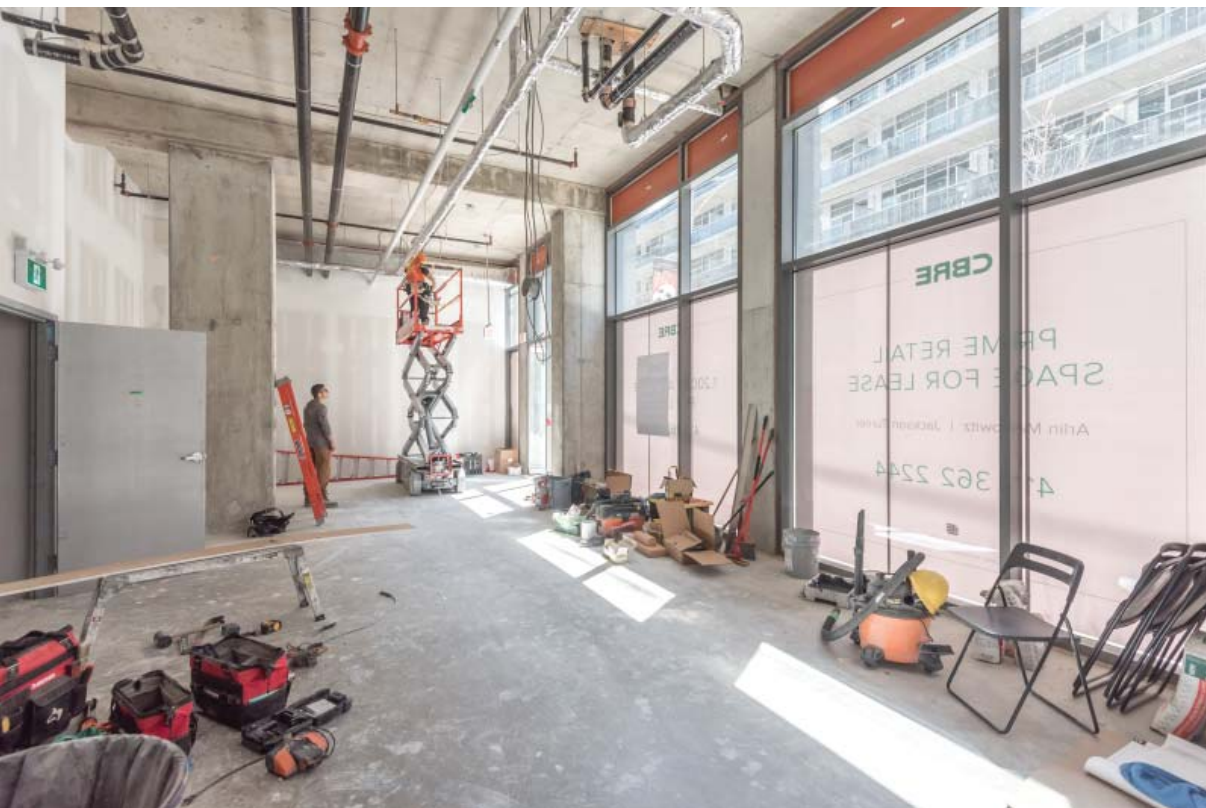
Net Rent: \$65.00 per sq.ft.

TMI: \$20.00 per sq.ft. (est.)

Available: Immediate

- Located in the heart of Toronto's Entertainment District and only steps from the best stretch of King St West
- Highly accessible and close to the Westbound/Eastbound King Streetcar and Southbound/Northbound Spadina Streetcar
- Floor to ceiling windows with excellent exposure onto Adelaide Street
- Extremely high vehicular traffic





**CBRE**

# 450

*Adelaide St West*

430 Adelaide Street West is located in Downtown West, just steps off the busy intersection of Spadina and Adelaide and a stones throw away from the heart of the Entertainment District.

430 Adelaide benefits from very high vehicular traffic and its proximity to a large number of condominium developments currently proposed and under construction, most notably the Waterworks Redevelopment and The Well development.



**CBRE**

This disclaimer shall apply to CBRE Limited, its Real Estate Brokerage and all other divisions of the Corporation, which include all employees and independent contractors ("CBRE"). The information set out herein, including all data, statistics and projections, is for informational purposes only and does not constitute an offer of securities. The information is not to be relied upon by CBRE, and CBRE does not represent, warrant or guarantee the accuracy, reliability, completeness or timeliness of the information. CBRE does not accept or assume any responsibility or liability, and/or consideration for the information or the recipient's reliance upon the information. The recipient of the information should take such steps as the recipient may deem necessary to verify the information prior to placing any reliance upon the information. The information may change and any property described in the information may be withdrawn from the market at any time without notice or obligation to be registered from CBRE. CBRE and the CBRE logo are the service marks of CBRE Limited and/or its affiliated or related companies in other countries. All other marks displayed on this document are the property of their respective owners. All Rights Reserved.



**5,016 + New Units**  
Under Construction/  
Pre-Construction  
in the Area



Average  
Household Income:  
**\$107,431\***



Estimated  
Population (2017)  
**52,593\***



Population  
Growth (2017-2022)  
**18.1%\***

**\*Within a 1km radius  
of 430 Adelaide**




## The Well Development



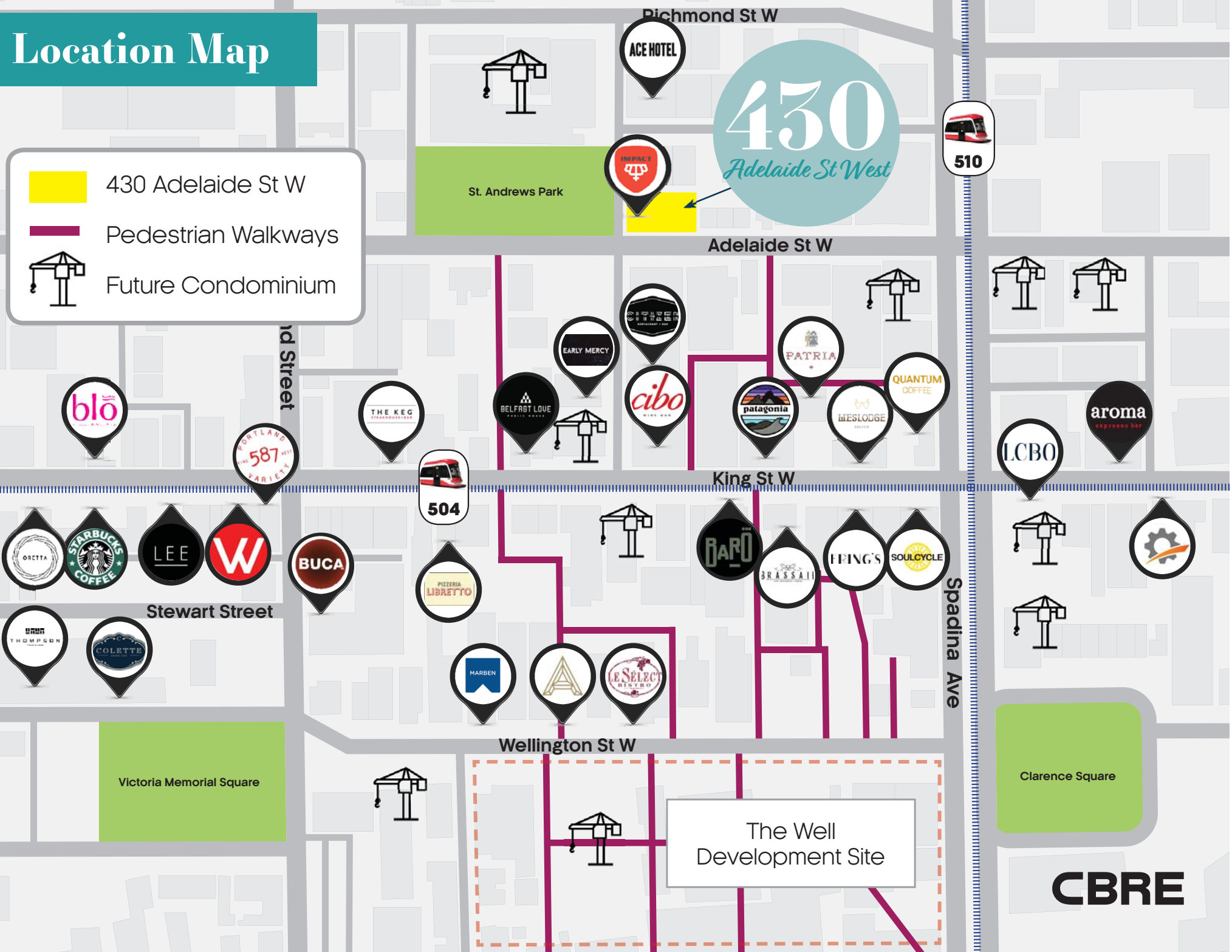
## Waterworks Redevelopment



# Location Map

-  430 Adelaide St W
-  Pedestrian Walkways
-  Future Condominium

**430**  
*Adelaide St West*







*For more information*  
**CONTACT**

**ARLIN MARKOWITZ\***

Senior Vice President

416 815 2374

[arlin.markowitz@cbre.com](mailto:arlin.markowitz@cbre.com)

**ALEX EDMISON\***

Vice President

416 874 7266

[alex.edmison@cbre.com](mailto:alex.edmison@cbre.com)

**JACKSON TURNER\***

Sales Associate

416 815 2394

[jackson.turner@cbre.com](mailto:jackson.turner@cbre.com)

**TEDDY TAGGART**

Sales Representative

416 847 3254

[teddy.taggart@cbre.com](mailto:teddy.taggart@cbre.com)

\*Sales Representative

**CBRE**

**450**

*Adelaide St West*