

# 700

QUEEN ST WEST @ EUCLID AVE



## FOR LEASE



700

AUSTRALIAN BOOT COMPANY  
BLANDSTONE

West Queen West Retail For Lease **CBRE**

# 700

QUEEN ST WEST @ EUCLID AVE

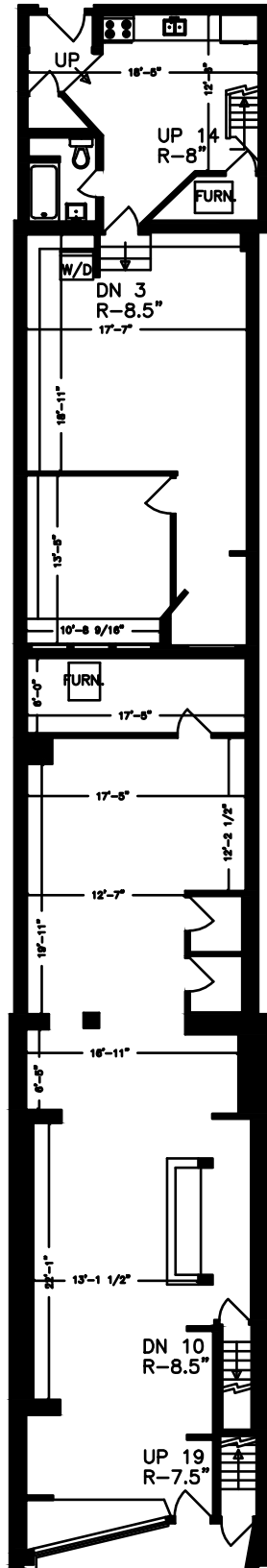
## Property Details

Ground Floor (GF): 2,388 sq.ft.  
Mezzanine: 355 sq.ft. (free)  
Basement: 890 sq.ft. (free)  
GF Net Rent: \$70 per sq.ft.  
TMI: \$10 per sq.ft.  
Available: Summer 2018

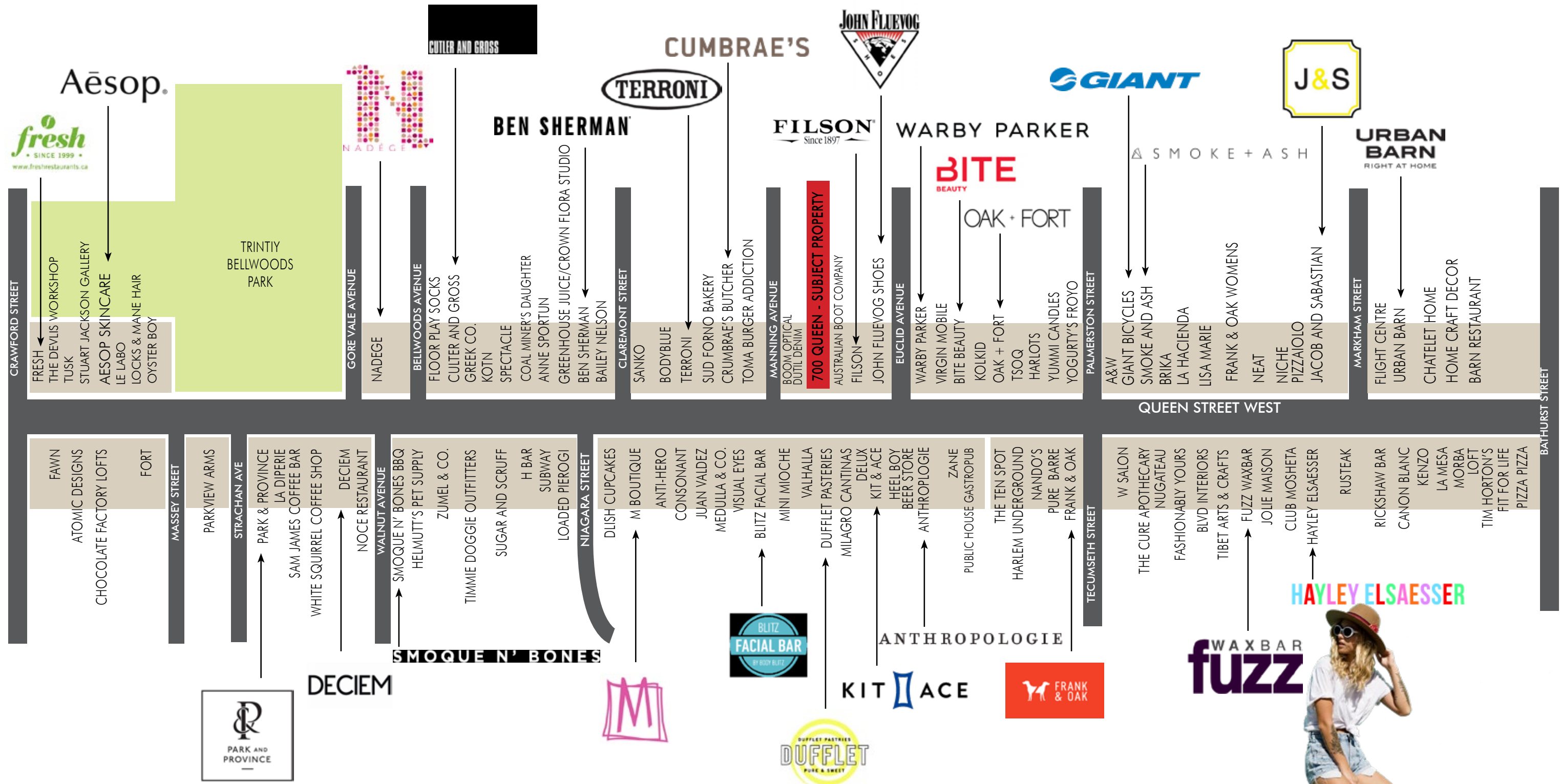
- Open concept main floor with soaring ceiling heights at the rear
- Mezzanine & Basement included at no charge
- Mezzanine at the rear leads to a 600 sq.ft. roof deck
- Located in a prime zone on West Queen West, neighbours include: Filson, Virgin Mobile, Warby Parker, Bite Beauty, Oak & Fort, John Fluevog, Ben Sherman, Terroni, Kit + Ace and many others.



Ground Floor Plan

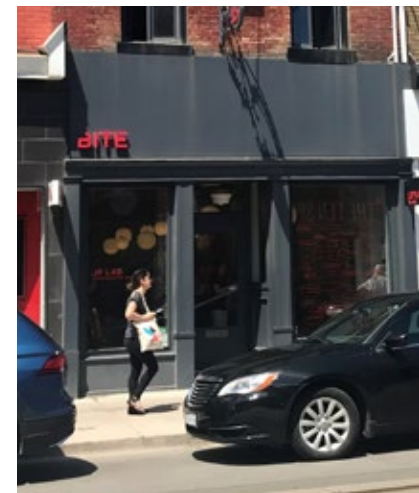


# WEST QUEEN WEST



DUBBED ONE OF THE WORLD'S COOLEST NEIGHBOURHOODS BY VOGUE MAGAZINE





**For More Information Contact:**

**Arlin Markowitz\***  
**Senior Vice President**  
 416 815 2374  
[arlin.markowitz@cbre.com](mailto:arlin.markowitz@cbre.com)

**Alex Edmison\***  
**Vice President**  
 416 874 7266  
[alex.edmison@cbre.com](mailto:alex.edmison@cbre.com)

**Jackson Turner\***  
**Sales Associate**  
 416 815 2394  
[jackson.turner@cbre.com](mailto:jackson.turner@cbre.com)

**Teddy Taggart**  
**Sales Representative**  
 416 847 3254  
[teddy.taggart@cbre.com](mailto:teddy.taggart@cbre.com)

This disclaimer shall apply to CBRE Limited, Real Estate Brokerage, and to all other divisions of the Corporation; to include all employees and independent contractors ("CBRE"). The information set out herein, including, without limitation, any projections, images, opinions, assumptions and estimates obtained from third parties (the "Information") has not been verified by CBRE, and CBRE does not represent, warrant or guarantee the accuracy, correctness and completeness of the Information. CBRE does not accept or assume any responsibility or liability, direct or consequential, for the Information or the recipient's reliance upon the Information. The recipient of the Information should take such steps as the recipient may deem necessary to verify the Information prior to placing any reliance upon the Information. The Information may change and any property described in the Information may be withdrawn from the market at any time without notice or obligation to the recipient from CBRE. CBRE and the CBRE logo are the service marks of CBRE Limited and/or its affiliated or related companies in other countries. All other marks displayed on this document are the property of their respective owners. All Rights Reserved.

