



26
DUNCAN
STREET
Toronto, ON

7,000 sq.ft. of Retail for Lease in the Heart of the Entertainment District

26 DUNCAN STREET

Toronto, ON



Size: \$7,000 sq. ft. (divisible)

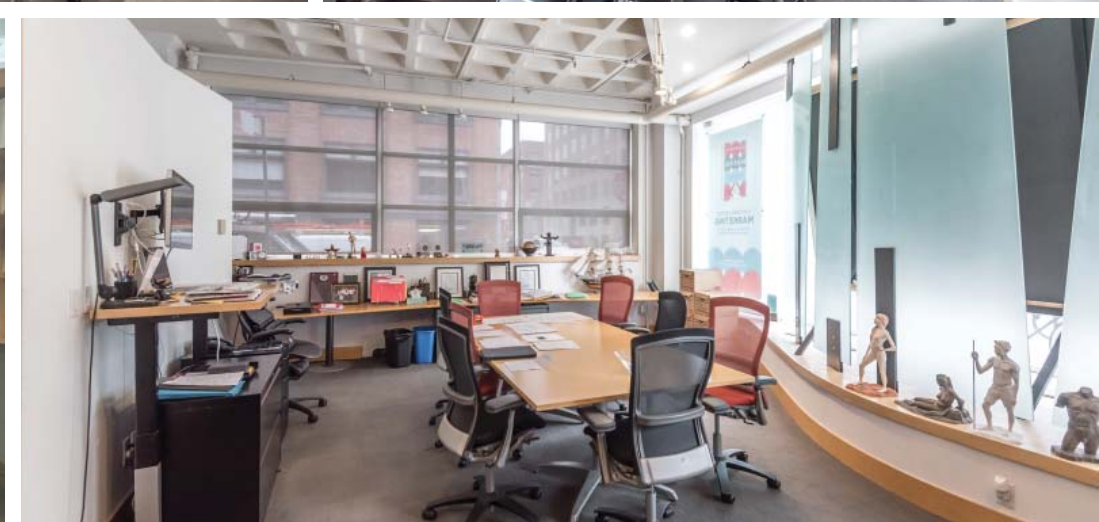
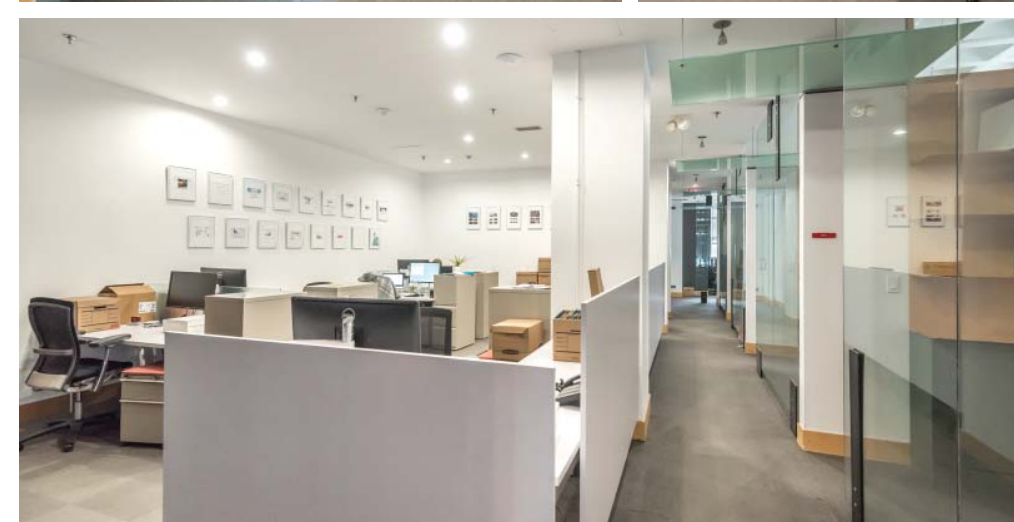
Net Rent: Call listing agents to discuss

TMI: \$14.00 per sq. ft. (est.)

Available: July 1st, 2018

- Located on the corner of Duncan and Nelson Street, steps off Adelaide Street West, in the heart of Toronto's Entertainment District
- Easily accessible via the King/Queen Streetcars and is close to two subway stations (St. Andrew and Osgoode)

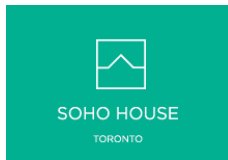
CBRE





Location- The Entertainment District

Located in Toronto's most vibrant neighbourhood, surrounded by some of the city's best restaurants, bars, accommodations and entertainment venues.



Notable Office Tenants in the Node



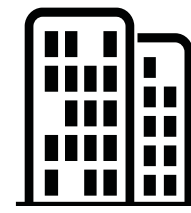
7,135,164 SF
OF OFFICE SPACE

4.2%
VACANCY RATE

Neighbourhood Map



39 Active
Condominium
Projects



12,346 units
in various
stages of
development

Entertainment District Consumer

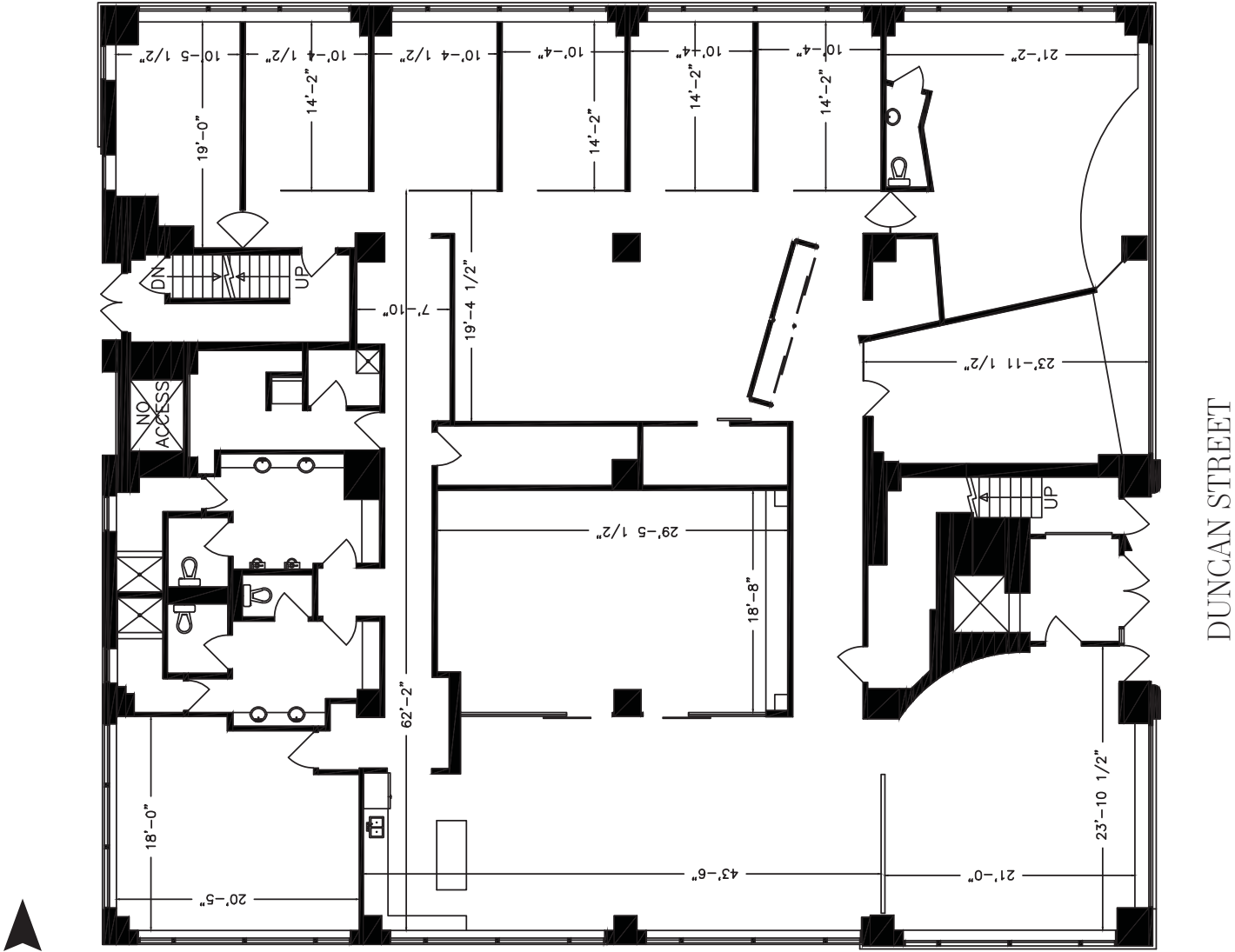
The Entertainment District's mix of converted industrial, posh condos and trendy restaurants host a variety of consumers collectively seeking the contemporary urban experience. A convenience-based lifestyle, with a desire to associate with progressive and creative brands.



CBRE

26 Duncan Street Floor Plan

NELSON STREET





CBRE

**26
DUNCAN
STREET**
Toronto, ON

Arlin Markowitz*
Senior Vice President
416 815 2374
arlin.markowitz@cbre.com

Alex Edmison*
Vice President
416 874 7266
alex.edmison@cbre.com

Jackson Turner*
Sales Associate
416 815 2394
jackson.turner@cbre.com

Teddy Taggart*
Sales Representative
416 847 3254
teddy.taggart@cbre.com

*Sales Representative

This disclaimer shall apply to CBRE Limited, Real Estate Brokerage, and to all other divisions of the Corporation; to include all employees and independent contractors ("CBRE"). The information set out herein, including, without limitation, any projections, images, opinions, assumptions and estimates obtained from third parties (the "Information") has not been verified by CBRE, and CBRE does not represent, warrant or guarantee the accuracy, correctness and completeness of the Information. CBRE does not accept or assume any responsibility or liability, direct or consequential, for the Information or the recipient's reliance upon the Information. The recipient of the Information should take such steps as the recipient may deem necessary to verify the Information prior to placing any reliance upon the Information. The Information may change and any property described in the Information may be withdrawn from the market at any time without notice or obligation to the recipient from CBRE. CBRE and the CBRE logo are the service marks of CBRE Limited and/or its affiliated or related companies in other countries. All other marks displayed on this document are the property of their respective owners. All Rights Reserved.