

# Yonge + Eglinton

# Flagship Urban Retail for Lease

# WHITEHAUS



**Only 1 Retail Unit Left!**



CBRE Limited, Real Estate Brokerage | 145 King Street West | Suite 1100 | Toronto, ON M5H 1J8 | 416 362 2244 | [www.cbre.ca](http://www.cbre.ca)

# Yonge + Eglinton

## Flagship Urban Retail for Lease

### Size:

Ground: 1,500 sq. ft. - *Last remaining ground floor unit!*

---

### Available:

Q4 2020

---

### Net Rent:

Please call listing agents to discuss

---

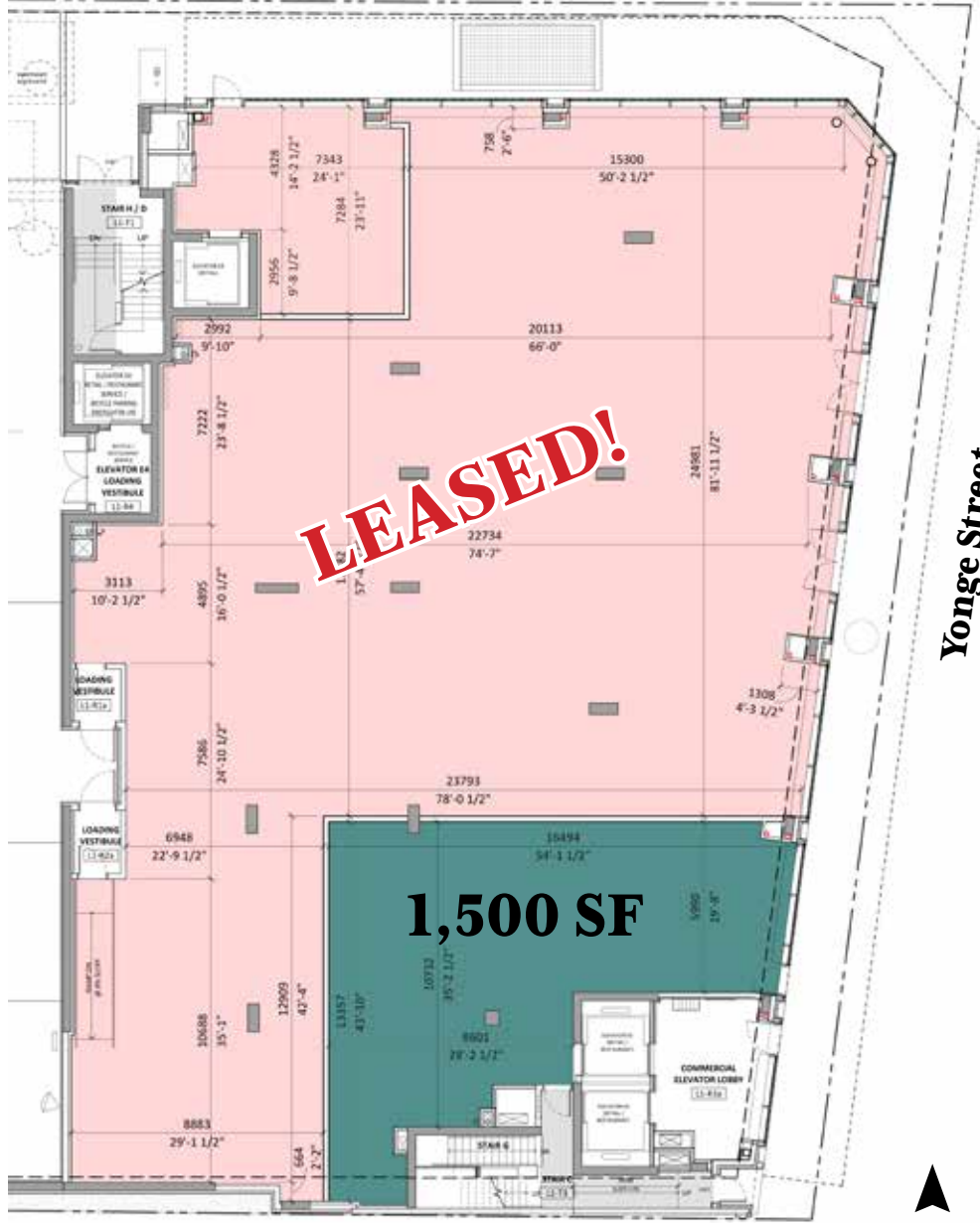
### Comments:

- Amazing ceiling heights
  - Neighbouring retailers include Lululemon, Urban Outfitters, Terroni, Sud Forno, Cumbrea's, Sporting Life, The Gap, Sephora and Starbucks
- 



# Ground Floor

Helendale Ave



# Connectivity

Whitehaus Condominium occupies a premier position in the rapidly growing node of Yonge & Eglinton in midtown Toronto. Located just north from the intersection of Yonge & Eglinton, the property benefits from exceptional local and regional access. The Yonge & Eglinton subway station is the fifth busiest subway station in the city with over 10 different bus lines servicing the station. The station is also the site of the new Eglinton Crosstown line (LRT) which will connect the east and west ends of the city. Once complete is 2021, the area will become one of the most well connected neighbourhoods in the city.

- **The fifth busiest subway station in Toronto**

77,530 people pass through Eglinton station daily

- **81,000 + people per day**

cross through the intersection of Yonge & Eglinton

- **Easily accessible to downtown Toronto**

Less than a 10 minute subway ride to Yonge & Bloor and less than 20 minutes to Union Station



# The Neighbourhood

Yonge and Eglinton is a popular midtown hub for young professionals and families. It is home to plenty of bars, restaurants, boutiques and national retailers.

The area is surrounded by some of the most affluent residential neighbourhoods in Toronto. Developers continue to build in and around the streets that surround Yonge & Eglinton, adding density to any already bustling well-established community.



## Shop

Yonge and Eglinton is one of the best shopping nodes within Toronto. People are drawn from neighbouring areas and from all over the city to shop at retailers such as Club Monaco, Sephora, Urban Outfitters, Sporting Life, Indigo, Swarovski, Lululemon and Kiehl's.



## Eat & Drink

Some of Toronto's best restaurants and bars are found at Yonge & Eglinton. Little Sister, Tabùlè, Fresh, Bar Buca, Cibo Wine Bar and The Keg are just a few of the popular restaurants in the neighbourhood.



# Yonge + Eglinton

SPORTING LIFE

ROSELAWN AVENUE

west elm

Yoga Centre  
Fed Ex Office



YONGE STREET

MONTGOMERY AVENUE



STOCK

HELENDALE AVENUE

WHITEHAUS DEVELOPMENT SITE

Hosu Bistro  
RBC

ORCHARD VIEW BLVD.

yonge eglinton centre

LCBO

Rexall

metro

aroma

Indigo

URBAN OUTFITTERS

SEPHORA

CINEPLEX ENTERTAINMENT

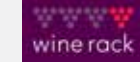
EGLINTON AVENUE

BMO  
Smokes Poutine  
Scotiabank

TD Bank

ERSKINE AVENUE

STARBUCKS



Amore Trattoria  
Pho King  
La Vecchia

DAVIDsTEA



BROADWAY AVENUE



Tim Hortons

Pure + Simple  
Grazie Ristorante  
Banh Mi Boys

THE SHOE COMPANY



Solutions



ROEHAMPTON AVENUE

Duke of Kent  
Starbucks



EGLINTON AVENUE

CIBC  
Tim Hortons

LCBO Loblaws



REDPATH AVENUE



# Yonge & Eglinton Condominium Developments

A.



**1 Eglinton East**

Status: Pre-Construction  
Units: 660  
Storeys: 65

F.



**65 Broadway Avenue**

Sixty Five Broadway  
Status: Pre-Construction  
Units: 778  
Storeys: 39, 39

B.



**55 Eglinton Ave E**

Status: Pre-Construction  
Units: 461  
Storeys: 50

G.



**75 Broadway Avenue**

Status: Pre-Construction  
Units: 336  
Storeys: 38

C.



**150 Eglinton Ave E**

Status: Pre-Construction  
Units: 429  
Storeys: 46

H.



**85 Broadway Avenue**

The Parker  
Status: Under Construction  
Units: 349  
Storeys: 37

D.



**89 Roehampton Ave**

Status: Under Construction  
Units: 255  
Storeys: 38

I.



**95 Broadway Avenue**

CityLights on Broadway  
Status: Under Construction  
Units: 496  
Storeys: 37

E.



**31-37 Helendale Ave**

Status: Pre-Construction  
Units: 231  
Storeys: 24

J.



**2444 Yonge Street**

Status: Pre-Construction  
Units: 637  
Storeys: 27,25,2

CBRE



**Arlin Markowitz\***  
Senior Vice President  
416 815 2374  
arlin.markowitz@cbre.com

**Alex Edmison\***  
Senior Vice President  
416 874 7266  
alex.edmison@cbre.com

**Jackson Turner\***  
Vice President 416 815  
2394  
jackson.turner@cbre.com

**Teddy Taggart\***  
Senior Sales Associate  
416 847 3254  
teddy.taggart@cbre.com

\*Sales Representative, \*\*Broker

This disclaimer shall apply to CBRE Limited, Real Estate Brokerage, and to all other divisions of the Corporation; to include all employees and independent contractors ("CBRE"). The information set out herein, including, without limitation, any projections, images, opinions, assumptions and estimates obtained from third parties (the "Information") has not been verified by CBRE, and CBRE does not represent, warrant or guarantee the accuracy, correctness and completeness of the Information. CBRE does not accept or assume any responsibility or liability, direct or consequential, for the Information or the recipient's reliance upon the Information. The recipient of the Information should take such steps as the recipient may deem necessary to verify the Information prior to placing any reliance upon the Information. The Information may change and any property described in the Information may be withdrawn from the market at any time without notice or obligation to the recipient from CBRE. CBRE and the CBRE logo are the service marks of CBRE Limited and/or its affiliated or related companies in other countries. All other marks displayed on this document are the property of their respective owners. All Rights Reserved.

**CBRE**