



BIDDINGTON
Building Quality for Generations™

1955 YONGE ST

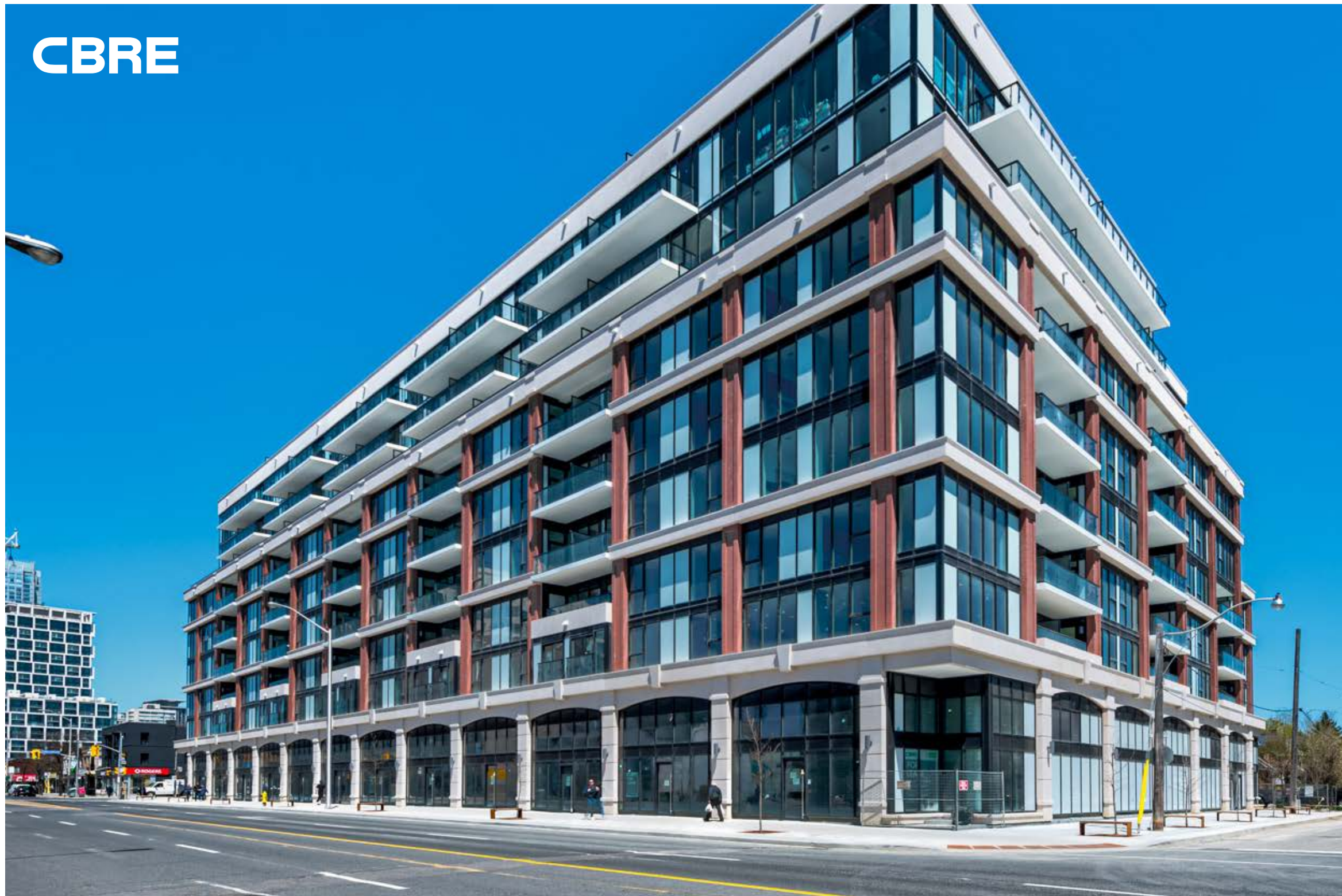
ONE UNIT REMAINING

CBRE

Premium Retail for Lease Between Eglinton & Davisville

CBRE Limited, Real Estate Brokerage | 145 King Street West | Suite 1100 | Toronto, ON M5H 1J8 | 416 362 2244 | www.cbre.ca

CBRE



1955 YONGE

YONGE STREET IN BETWEEN EGLINTON & DAVISVILLE

Size: 622 sq. ft.

Available: Immediate

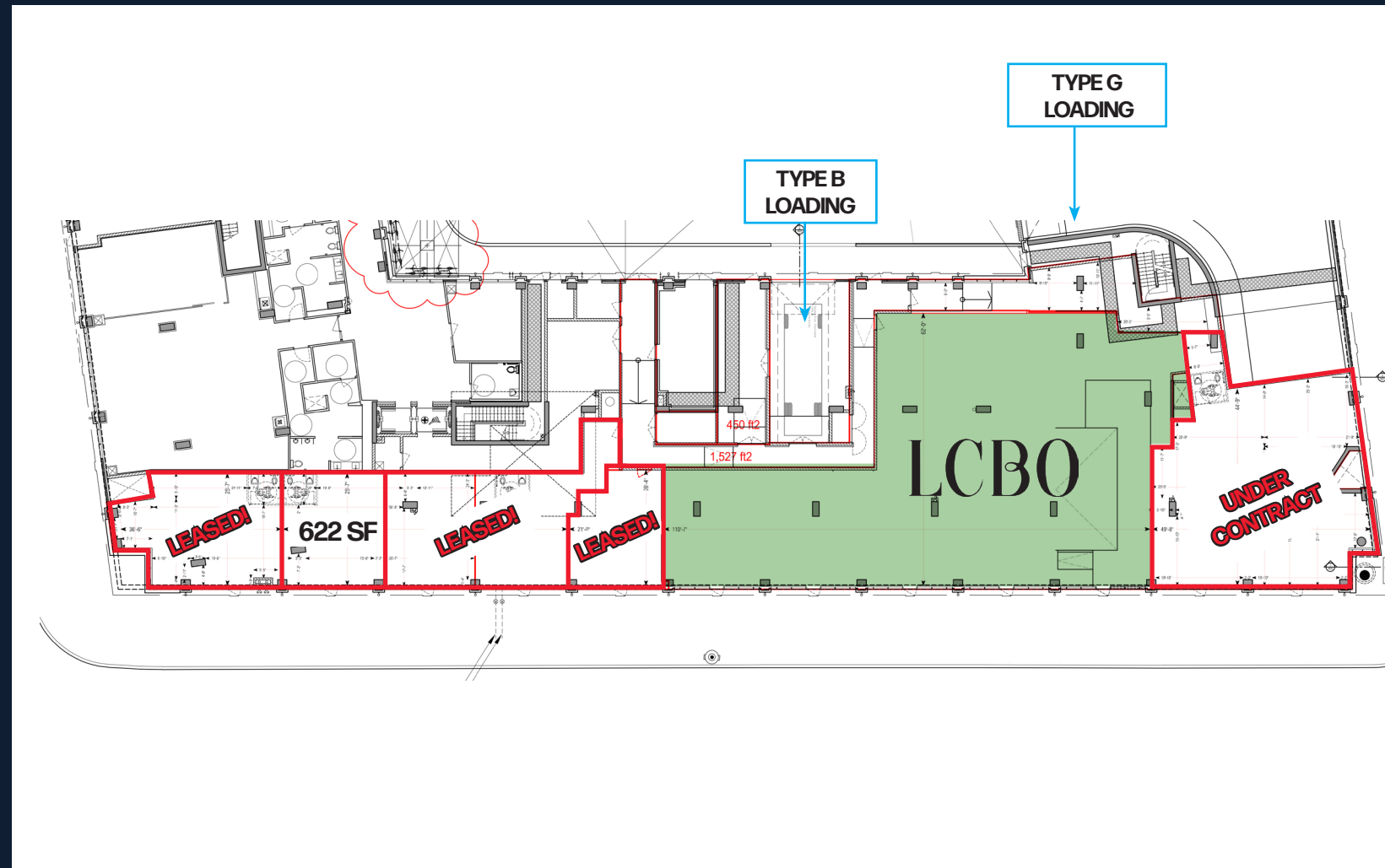
Rent: Please call listing agents to discuss

TMI: \$26.00 per sq. ft.

- Iconic space with excellent Yonge Street frontage & 16 ft. ceiling heights
- 8 shared surface parking spots
- Food uses welcome, ample loading and garbage facilities and provisions for venting
- Directly across the street from a large public parking lot



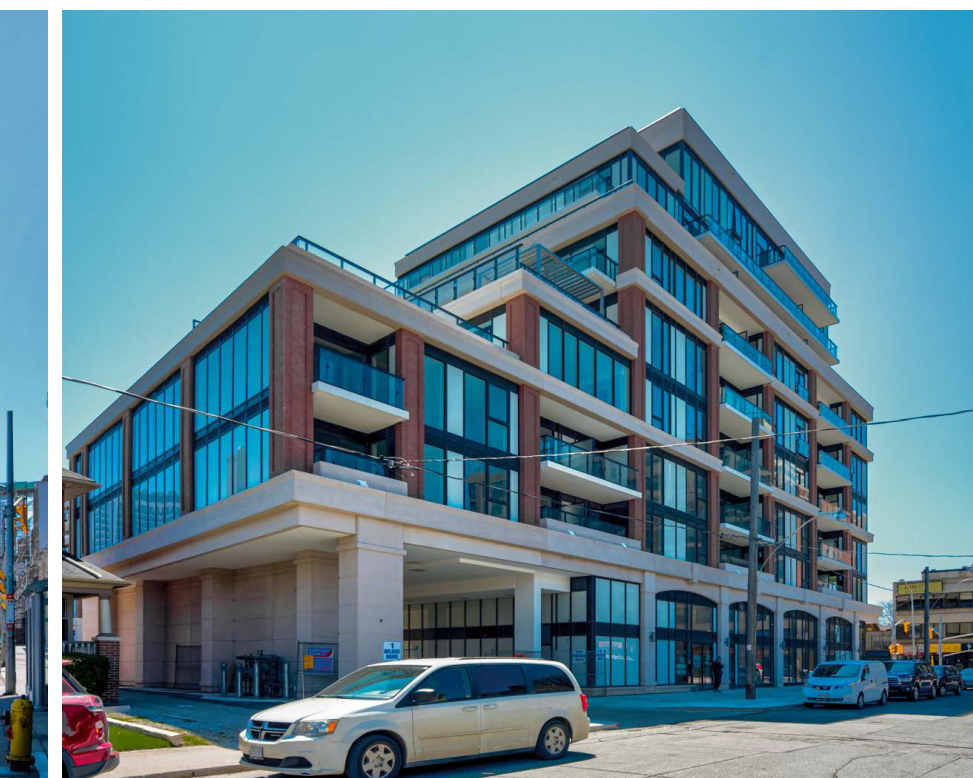
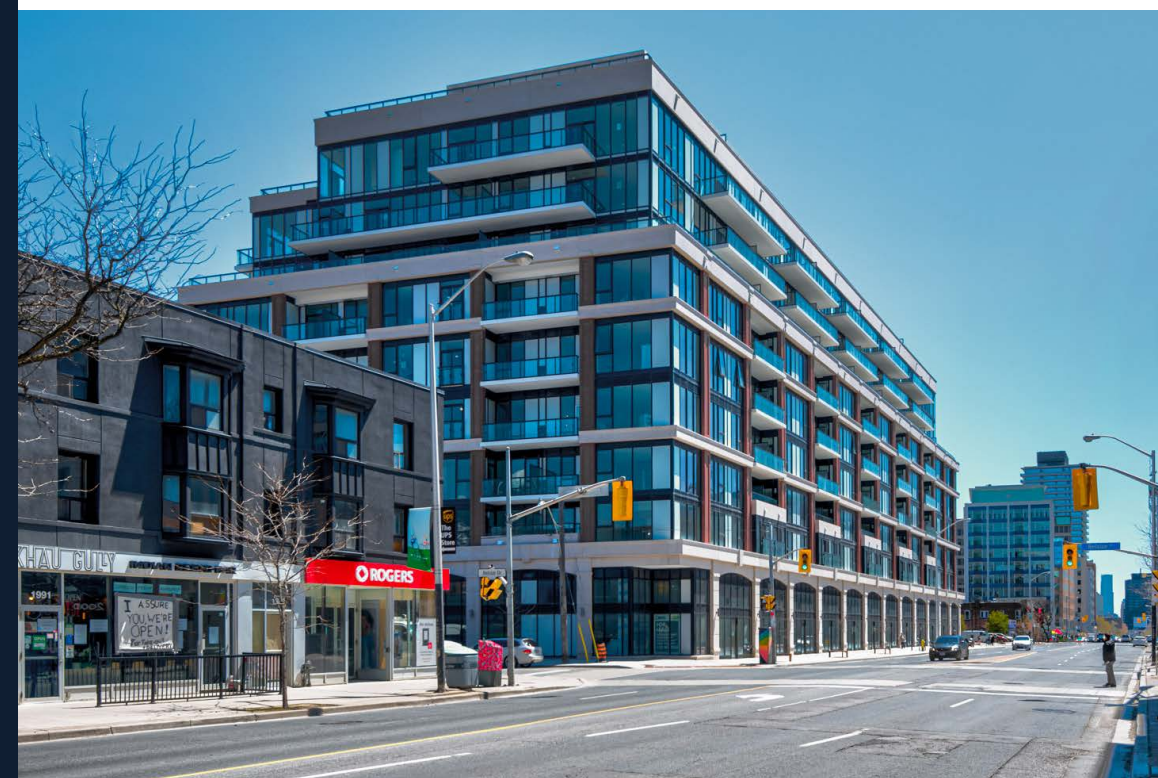
FLOOR PLAN



BELSIZE DRIVE

MILLWOOD ROAD

YONGE STREET



CONTACT

Arlin Markowitz*

Executive Vice President
416 815 2374
arlin.markowitz@cbre.com

Alex Edmison*

Senior Vice President
416 874 7266
alex.edmison@cbre.com

Jackson Turner**

Senior Vice President
416 815 2394
jackson.turner@cbre.com

Teddy Taggart*

Associate Vice President
416 847 3254
teddy.taggart@cbre.com

Emily Everett*

Sales Representative
647 943 4185
emily.everett@cbre.com

*Sales Representative, **Broker

CBRE