

450 BATHURST STREET

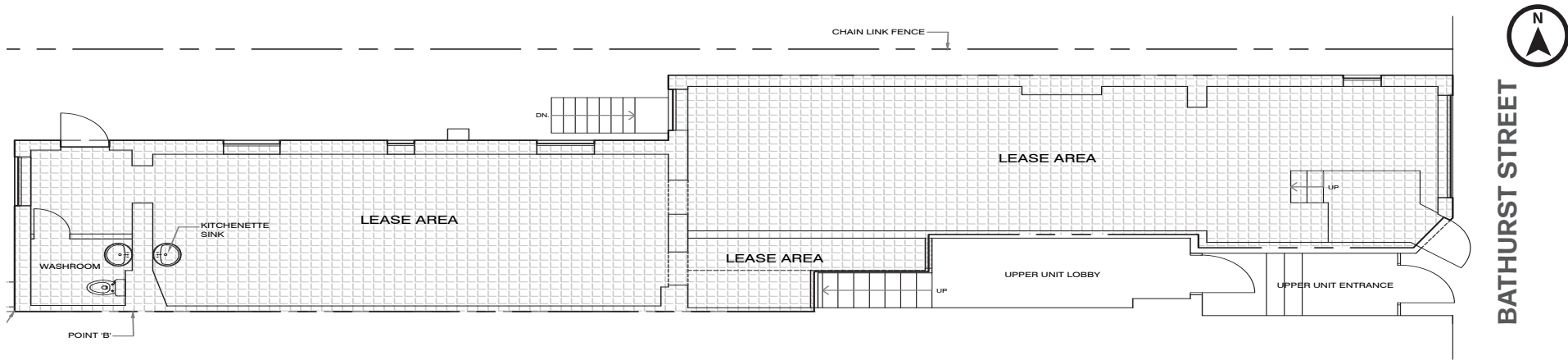
STEPS FROM BATHURST & COLLEGE

BEER
STORE

PROPERTY FEATURES

SIZE: 1,138 sq. ft.
GROSS RENT: \$5,000.00 per month
AVAILABLE: Immediately

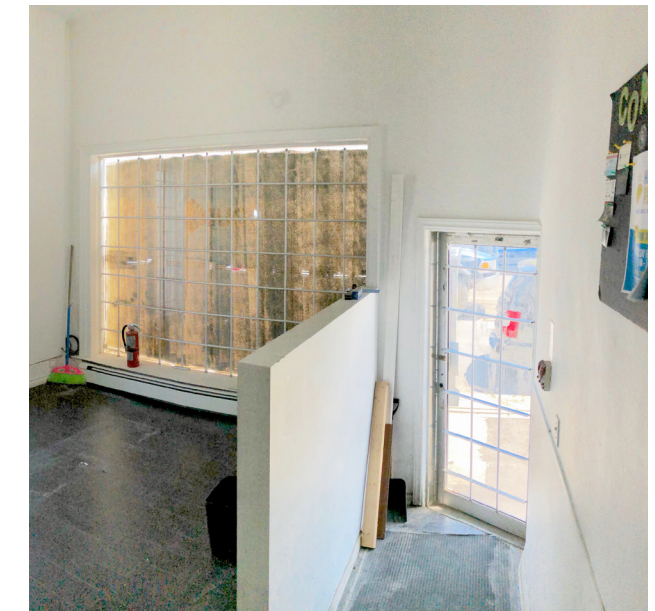
- ◆ Excellent visibility
- ◆ Steps from College streetcar and multiple bus routes on College and Bathurst
- ◆ High vehicular and pedestrian foot traffic
- ◆ Neighbouring retailers include Basil Box, FreshCo and Scotiabank



- ◆ Property is located right beside the Bathurst College Centre, south of the intersection of College Street and Bathurst Street in downtown Toronto, this grocery-anchored centre features 146,627 sq. ft. of retail and 70,000 sq. ft. of office

PHOTOS

SIGNAGE OPTIONS



THE LOCATION

450 Bathurst Street is an amazing retail opportunity located on the side the Bathurst College Centre, south of the intersection of College Street and Bathurst Street in downtown Toronto. The property is situated in the heart of world-class coffee, restaurant and nightlife scenes and is steps from Little Italy. Neighbouring retailers include Fresh, The Beer Store, Sneaky Dee's, Snakes & Lattes, Supermarket and the popular university bar the Green Room. The property is bordering the Kensington-Chinatown neighbourhood which benefits from heavy pedestrian foot traffic and vehicular traffic.



97
WALKER'S PARADISE

98
RIDER'S PARADISE

DATA COLLECTED FROM WALKSCORE



639,383
POPULATION*

\$125,225
AVG HOUSEHOLD INCOME*

36.3
MEDIAN AGE*

*2018 STATS WITHIN 5 KM OF 460 BATHURST ST



PLEASE CONTACT:

Arlin Markowitz*

Senior Vice President

416 815 2374

arlin.markowitz@cbre.com

Alex Edmison*

Vice President

416 874 7266

alex.edmison@cbre.com

Jackson Turner**

Senior Associate

416 815 2394

jackson.turner@cbre.com

Teddy Taggart

Sales Representative

416 847 3254

teddy.taggart@cbre.com

*Sales Representative

**Broker

© 2014 CBRE Limited, Real Estate Brokerage, and to all other divisions of the Corporation; to include all employees and independent contractors ("CBRE"). The information set out herein, including, without limitation, any projections, images, opinions, assumptions and estimates obtained from third parties (the "Information") has not been verified by CBRE, and CBRE does not represent, warrant or guarantee the accuracy, correctness and completeness of the Information. CBRE does not accept or assume any responsibility or liability, direct or consequential, for the information or the recipient's reliance upon the Information. The recipient of the Information should take such steps as the recipient may deem necessary to verify the Information prior to placing any reliance upon the Information. The Information may change and any property described in the Information may be withdrawn from the market at any time without notice or obligation to the recipient from CBRE. CBRE and the CBRE logo are the service marks of CBRE Limited and its affiliates or related companies in other countries. All other marks displayed on this document are the property of their respective owners. All Rights Reserved.

CBRE