

SLATE

# ONE ST. CLAIR

*Avenue east*



CBRE

# ONE ST. CLAIR

*Avenue east*

**SIZE:** Concourse: 716-1,796 sq. ft.

**NET RENT:** Please call listing agents

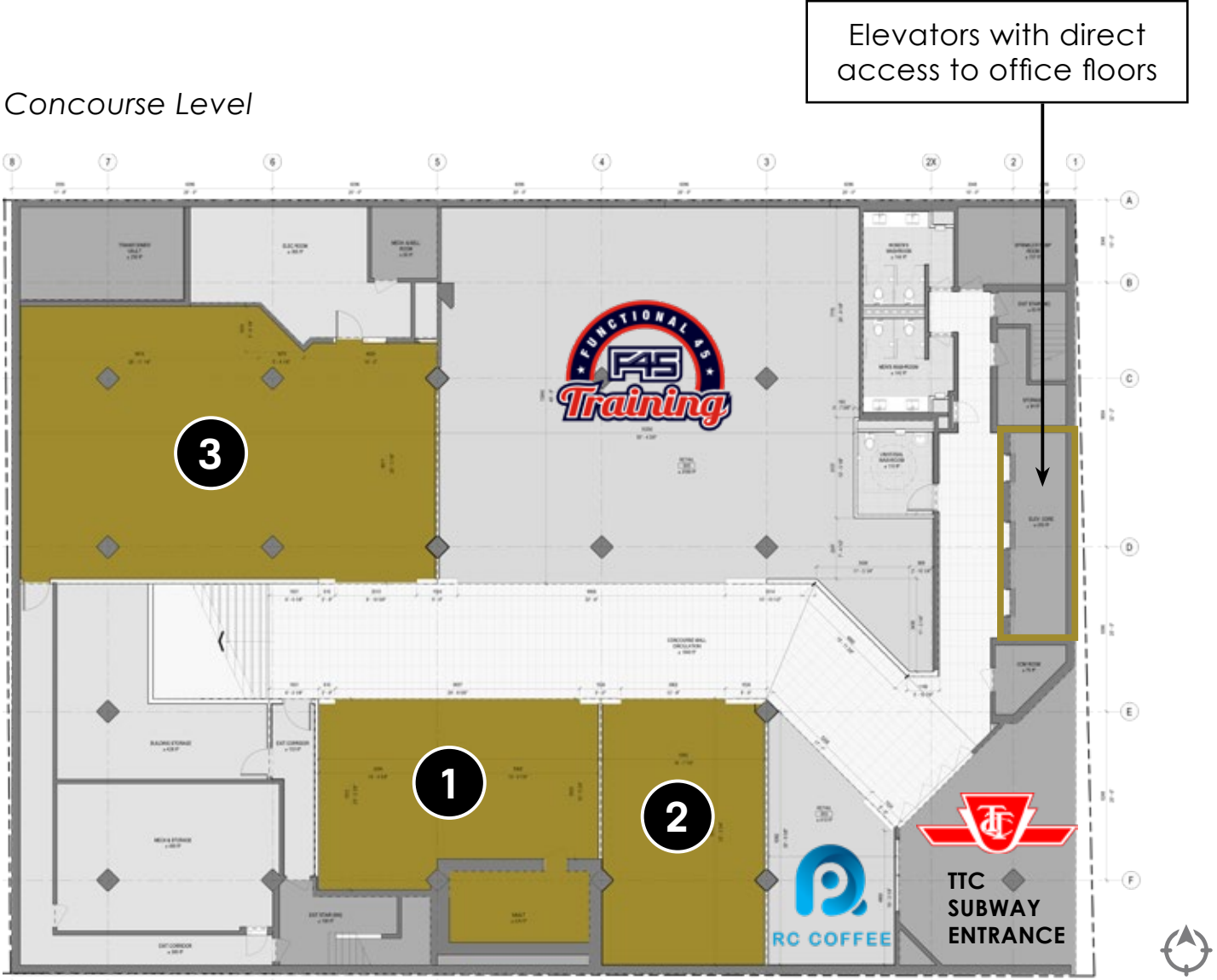
**TMI:** \$24.75 per sq. ft.

**AVAILABLE:** Immediately

- 1 St. Clair East, along with neighbouring properties, will be receiving a complete renovation and re-merchandising
- Building has direct access to the St. Clair subway station
- Concourse has excellent pedestrian volume as TTC riders must pass through to enter the station; St. Clair Station sees on average 34,610 people each weekday



# 1 ST. CLAIR AVENUE EAST FLOOR PLAN



- 1 1,073 sq. ft.
- 2 716 sq. ft.
- 3 1,796 sq. ft.

1 St. Clair East Artist's Rendering



# NOTABLE AREA DEVELOPMENTS



**ONE**  
**ST. CLAIR**  
*Avenue east*

## 1. One Delisle



1 Delisle Avenue  
Pre-Construction  
383 units  
47 storeys

## 2. The Clair



1421 Yonge Street  
Pre-Construction  
220 units  
34 storeys

## 3. St. Clair Place



1535 Yonge Street  
Pre-Construction  
1,387 units  
59,39,34 storeys

## 4. 7 Heath Street



7 Heath Street  
Pre-Construction  
97 units  
13 storeys

## 5. 129 St. Clair E



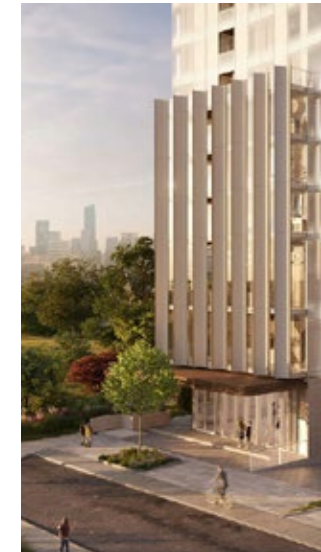
129 St. Clair Ave E  
Construction  
259 units  
28 storeys

## 6. 29 Pleasant



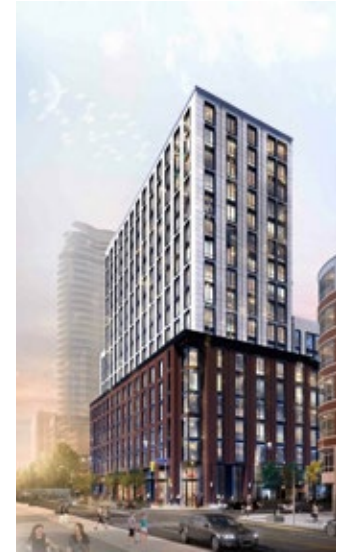
29 Pleasant Blvd.  
Construction  
302 units  
34 storeys

## 7. 49 Jackes



49 Jackes Avenue  
Pre-Construction  
217 units  
29 storeys

## 8. 1365 Yonge



1365 Yonge Street  
Construction  
237 units  
17 storeys



**27,364**  
TOTAL  
POPULATION



**10%**  
GROWTH RATE  
(2015-2020)



**34,610**  
DAYTIME  
POPULATION



**\$242,148**  
AVG. HOUSEHOLD  
INCOME

\*Within 1KM Radius (Statistics Canada)

# NEIGHBOURING RETAILERS

**Delisle Avenue**

- POPEYES — Popeye's
- Dove Cleaners
- petvalu — Pet Valu
- freshii — Freshii
- BMO — BMO Bank of Montreal

**Yonge Street**

- One Delisle Condos
- Sushi Gen
- Walking on Cloud
- Modo Yoga Uptown
- Salon Scavo
- iQ — IQ Foods
- Presse Cafe
- RBC
- BUCA

**St. Clair Avenue West**

- Pasta Pronto
- Mary Be Kitchen
- Kiva's Bagel Bar
- Holy Chuck
- Topcuts
- Bagel House
- Book City
- Home Hardware

**Balmoral Avenue**

- Nove Trattoria
- Bombay Roti
- Barnsteiner's

**Heath Street**

- Midtown Gastro Hub
- Harvey's
- Tim Hortons
- Shoppers Drug Mart — SHOPPERS DRUG MART

**Yonge Street**

- Freedom Mobile
- Legs Beautiful
- Roots
- Loblaws — Loblaws
- Greenhouse Juice — Greenhouse Juice Co.
- Starbucks
- Rexall
- GoodLife FITNESS

**St. Clair Avenue East**

**1 St. Clair Ave E**

- Scotiabank
- RC COFFEE
- PLAYA CABANA
- Canada Post
- Olsson Optical
- Aroma Espresso Bar — aroma

**Pleasant Boulevard**

- Hero Certified Burgers — HERO CERTIFIED BURGERS
- Eden Flower Shop

**Rosehill Avenue**

- C. C. Pharmacy



# THE FUTURE OF YONGE & ST. CLAIR *Slate Retail Repositioning*

## 2 St. Clair Avenue West

BEFORE



AFTER



**Completed in 2019**

The newly renovated retail podium features high-end food and beverage offerings including Buca and IQ Foods.

## 1 St. Clair Avenue East

BEFORE



AFTER



**Completion in 2021**

Revitalization of the podium and Scotiabank, with the repositioning of the ground and retail concourse. Tenants include F45 and Prairie Boy.

## 2 St. Clair Avenue East

BEFORE



AFTER



**Completed in 2017**

Repositioned 30,000 sq. ft. of underutilized retail with high-traffic amenities including Loblaws, Greenhouse Juice, Starbucks, Rexall and TD Bank.

## 1 Delisle (Yonge & Delisle)

BEFORE



AFTER



**Expected Completion 2024/2025**

New 47-storey residential development designed by renowned architect Studio Gang, with 6,000 sq. ft. + of new retail.



**Slate Portfolio**

1.2 million sq.ft. of office space with over 5,400 office tenants

## Advisors

**Arlin Markowitz\***  
Executive Vice President  
416 815 2374  
arlin.markowitz@cbre.com

**Alex Edmison\***  
Senior Vice President  
416 874 7266  
alex.edmison@cbre.com

**Jackson Turner\*\***  
Vice President  
416 815 2394  
jackson.turner@cbre.com

**Teddy Taggart\***  
Senior Sales Associate  
416 847 3254  
teddy.taggart@cbre.com

\*Sales Representative \*\*Broker



This disclaimer shall apply to CBRE Limited, Real Estate Brokerage, and to all other divisions of the Corporation; to include all employees and independent contractors ("CBRE"). The information set out herein, including, without limitation, any projections, images, opinions, assumptions and estimates obtained from third parties (the "Information") has not been verified by CBRE, and CBRE does not represent, warrant or guarantee the accuracy, correctness and completeness of the Information. CBRE does not accept or assume any responsibility or liability, direct or consequential, for the Information or the recipient's reliance upon the Information. The recipient of the Information should take such steps as the recipient may deem necessary to verify the Information prior to placing any reliance upon the Information. The Information may change and any property described in the Information may be withdrawn from the market at any time without notice or obligation to the recipient from CBRE. CBRE and the CBRE logo are the service marks of CBRE Limited and/or its affiliated or related companies in other countries. All other marks displayed on this document are the property of their respective owners. All Rights Reserved.