

111-113
Yorkville

ICONIC YORKVILLE RETAIL FOR LEASE



CBRE

111-113 Yorkville

111-113 Yorkville Avenue is an iconic address connected to the charming boutiques of Old York Lane on Yorkville Avenue in between Hazelton and Bellair, on the best section of the street.

111-113 Yorkville Avenue is newly renovated with an updated modernized facade featuring large floor-to-ceiling windows and redeveloped right-sized layouts. Veronica Beard has recently opened on the ground floor of the building.

The opportunity is across the street from Chanel, Brunello Cuccinelli, Versace, Chanel and Balenciaga, while also benefiting from its close proximity to Off White, James Perse, Reformation, John Elliott, Le Labo, The Hazelton Hotel and the Four Seasons Hotel.





111-113 Yorkville

Address: 111-113 Yorkville Avenue, Toronto

Size: Ground: ~~Unit 1: 1,862 sq. ft.~~ **LEASED TO VERONICA BEARD!**
Second: ~~Unit 2: 873 sq. ft.~~ **LEASED!**
~~Unit 3: 879 sq. ft.~~ **LEASED!**
Third: Unit 4: 895 sq. ft.
Unit 5: 900 sq. ft. + 45 sq. ft. balcony
Lower Ground: Unit 6: 2,143 sq. ft. + patio potential

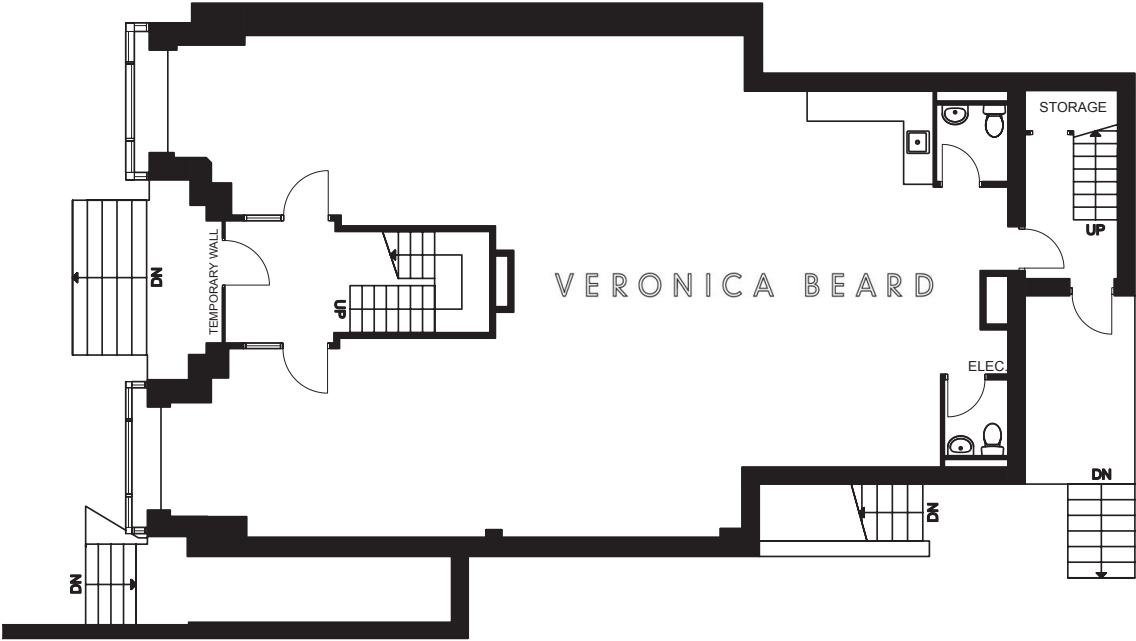
Net Rent: Third: \$35.00 per sq. ft.
Lower Ground: \$60.00 per sq. ft.

TMI: \$45.83 per sq. ft.

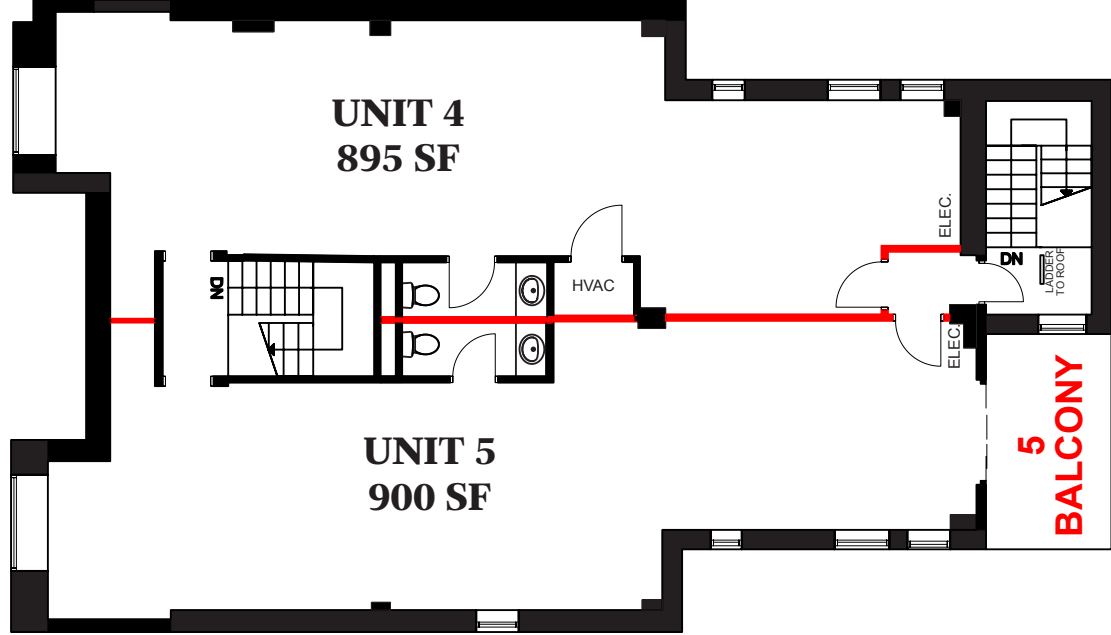
Available: Immediately

FLOOR PLANS

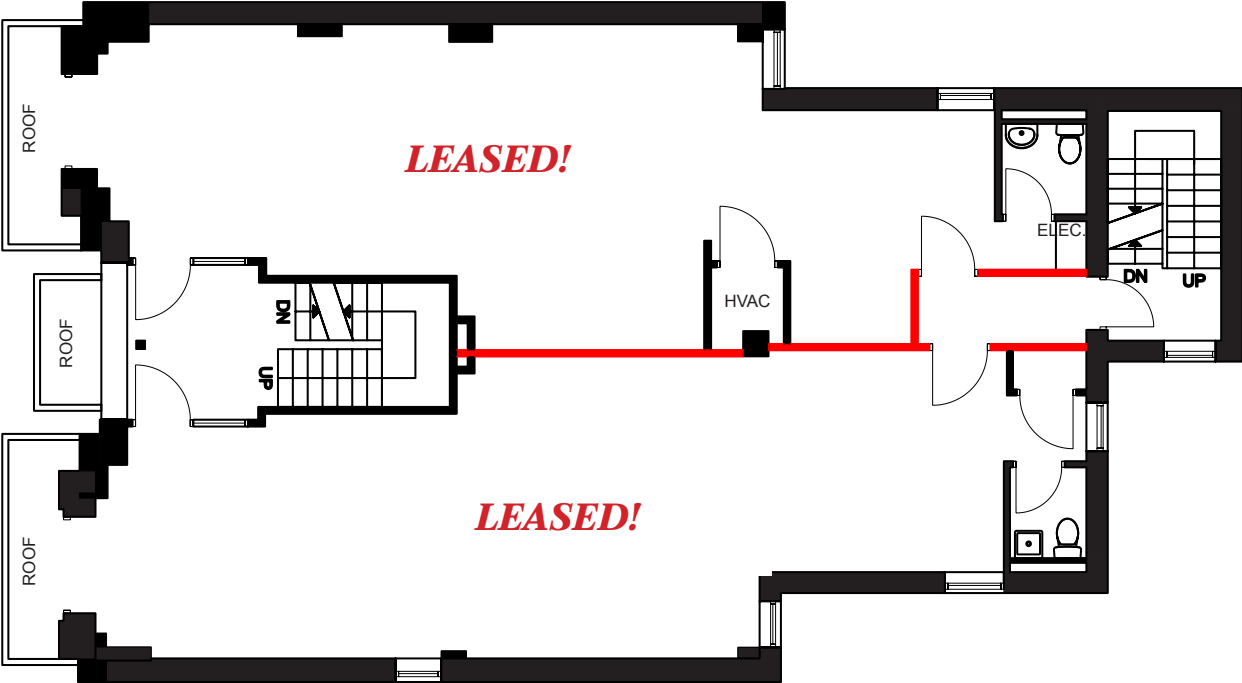
GROUND FLOOR - LEASED TO VERONICA BEARD



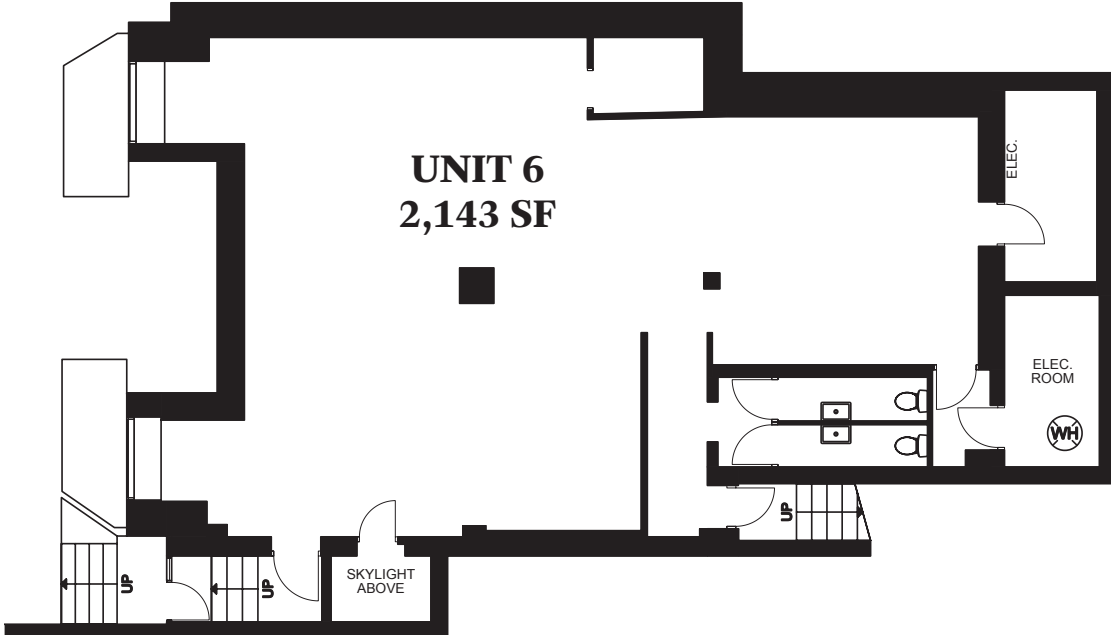
THIRD FLOOR



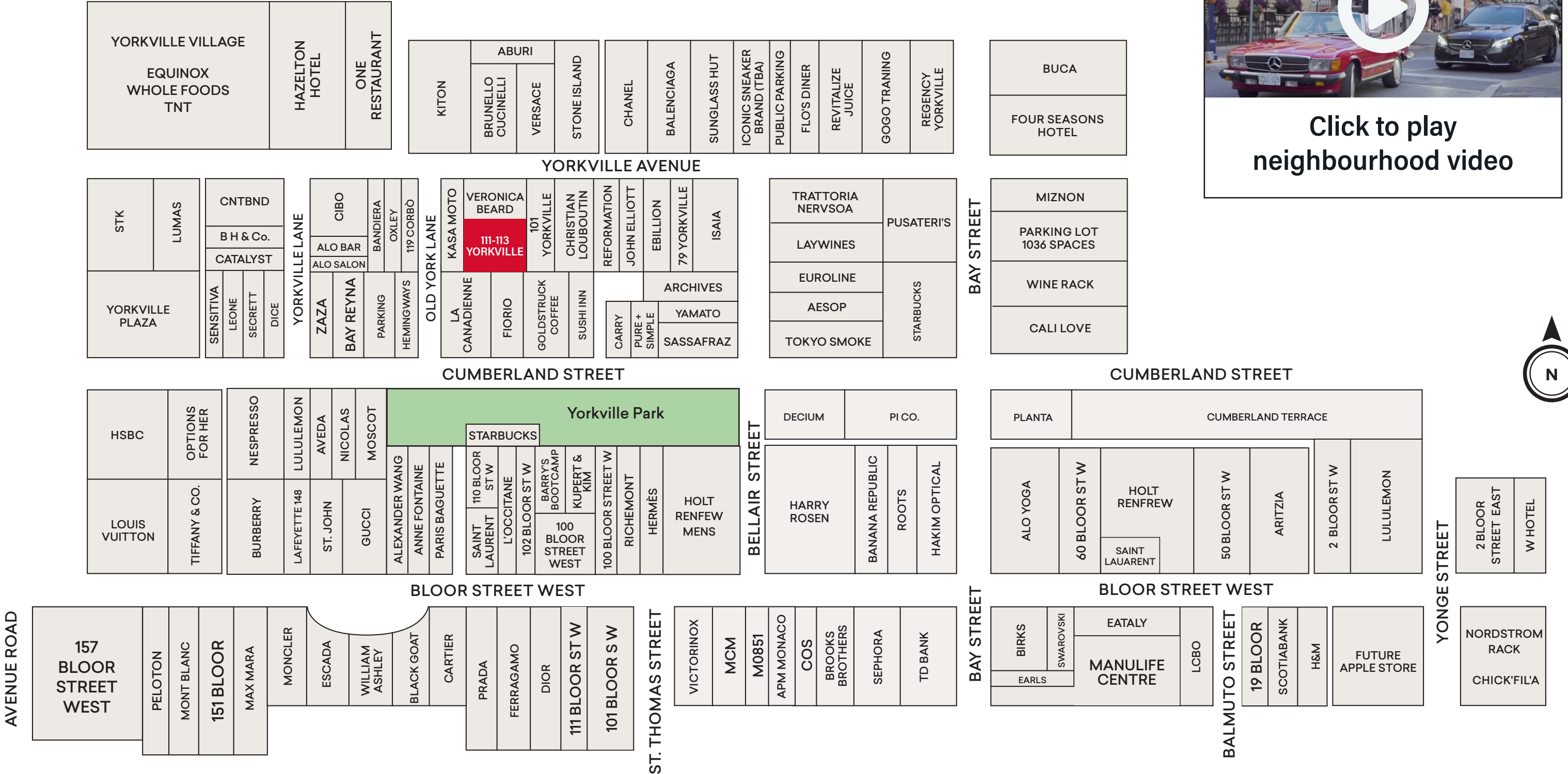
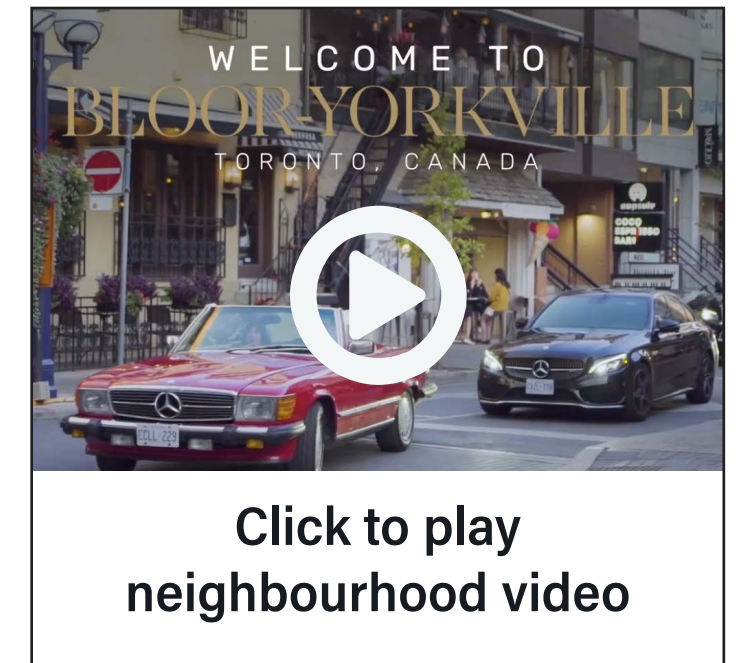
SECOND FLOOR

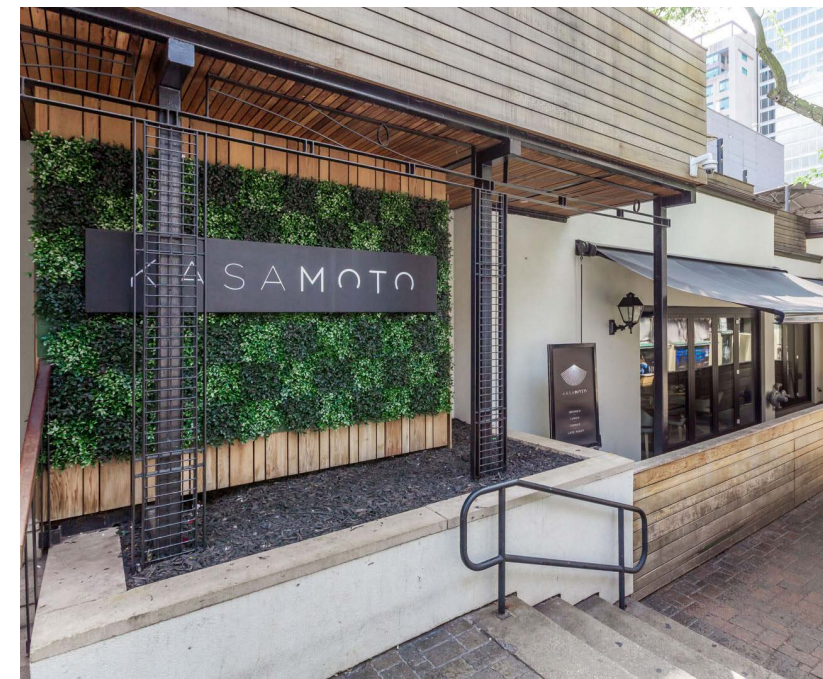


LOWER GROUND



NEIGHBOURHOOD STREETSCAPE





111-113
Yorkville

111-113
Yorkville

Arlin Markowitz*
Executive Vice President
416 815 2374
arlin.markowitz@cbre.com

Alex Edmison*
Senior Vice President
416 874 7266
alex.edmison@cbre.com

Jackson Turner**
Senior Vice President
416 815 2394
jackson.turner@cbre.com

Teddy Taggart*
Associate Vice President
416 847 3254
teddy.taggart@cbre.com

Emily Everett
Sales Representative
647 943 4185
emily.everett@cbre.com

*Sales Representative

**Broker

This disclaimer shall apply to CBRE Limited, Real Estate Brokerage, and to all other divisions of the Corporation; to include all employees and independent contractors ("CBRE"). The information set out herein, including, without limitation, any projections, images, opinions, assumptions and estimates obtained from third parties (the "Information") has not been verified by CBRE, and CBRE does not represent, warrant or guarantee the accuracy, correctness and completeness of the Information. CBRE does not accept or assume any responsibility or liability, direct or consequential, for the Information or the recipient's reliance upon the Information. The recipient of the Information should take such steps as the recipient may deem necessary to verify the Information prior to placing any reliance upon the Information. The Information may change and any property described in the Information may be withdrawn from the market at any time without notice or obligation to the recipient from CBRE. CBRE and the CBRE logo are the service marks of CBRE Limited and/or its affiliated or related companies in other countries. All other marks displayed on this document are the property of their respective owners. All Rights Reserved.