

500 CHURCH STREET

PRIME RETAIL FOR LEASE



1,102 SQ. FT. IN THE HEART OF THE
CHURCH & WELLESLEY VILLAGE

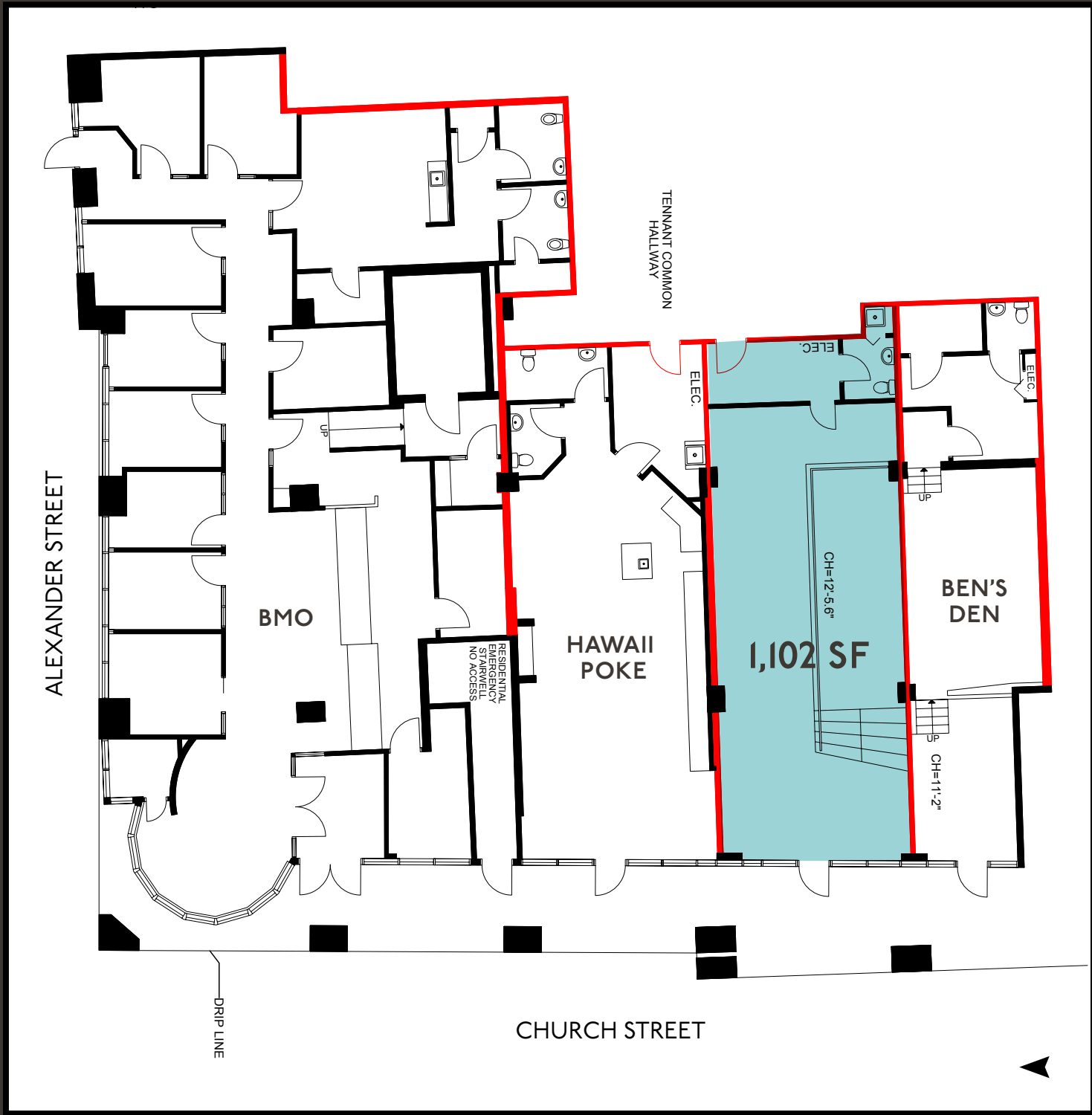
PROPERTY DETAILS

SIZE: 1,102 sq. ft.
NET RENT: \$20.00 per sq. ft.
TMI: \$25.00 per sq. ft.
AVAILABLE: Immediate

- ◆ Centrally located retail in downtown Toronto, in the heart of the popular Church & Wellesley Village
- ◆ Minutes from both College and Wellesley subway stations and steps to the 506 College Streetcar
- ◆ Within walking distance to Ryerson University
- ◆ Rapidly expanding neighbourhood with 13 condominiums currently under construction, and another 15 in the pre-construction phase
- ◆ Great fit for general retail, fast food or a professional office
- ◆ Includes private locker for storage
- ◆ Monthly parking can be arranged for a fee



FLOOR PLAN

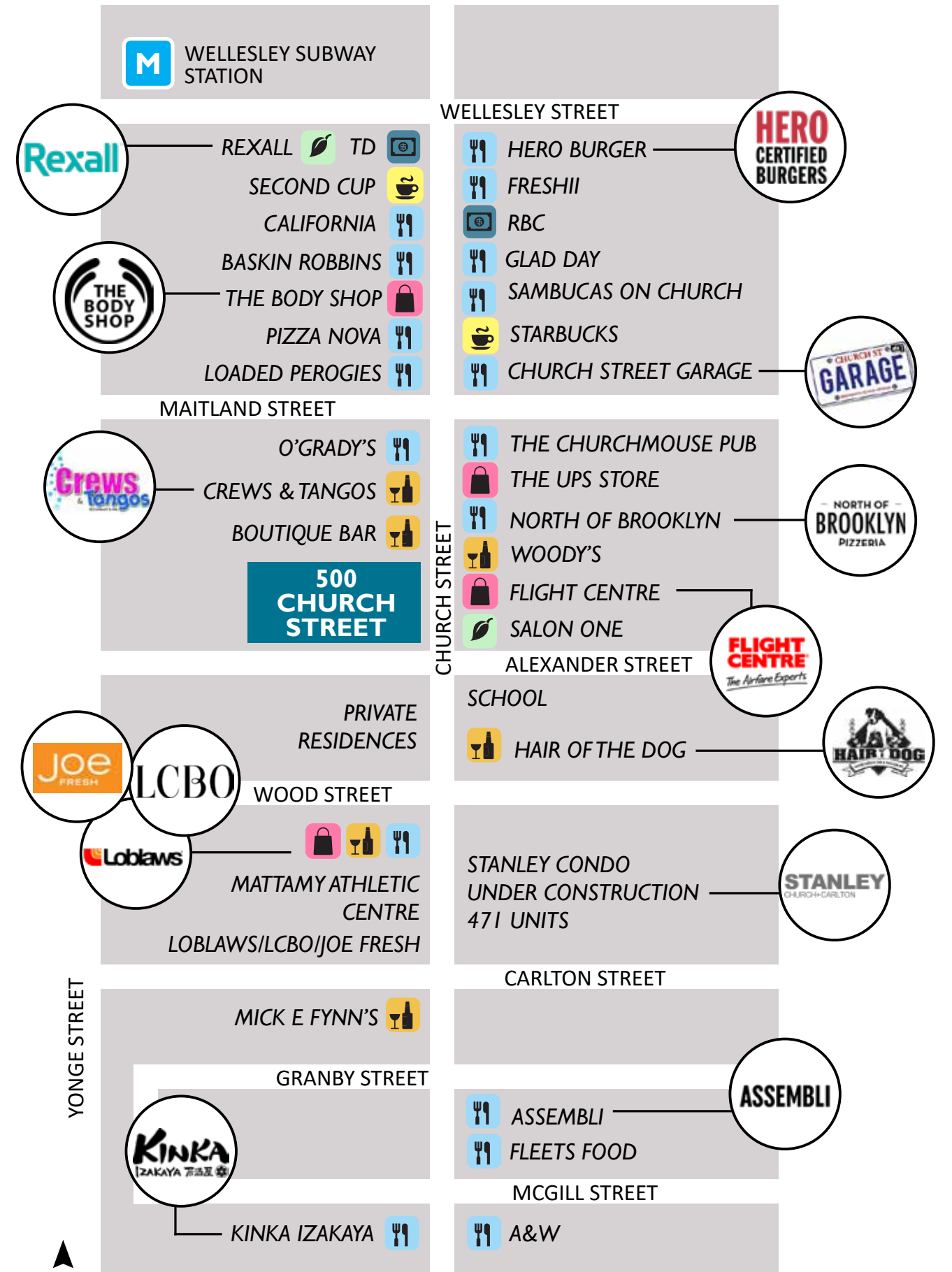


LOCATION | HEART OF THE VILLAGE

500 Church Street is centrally located in downtown Toronto, in the heart of the popular Church & Wellesley Village, neighbouring Ryerson University. It is located within a few minutes walk to both Wellesley and College Subway stations and seconds from a 506 College Streetcar stop.

The site benefits from its location within Toronto's Church Wellesley Village or "The Village". The Village is a popular and lively neighbourhood all year around known for its cafes, restaurants, shops and nightlife, and every June hosts Pride Month, where hundreds of thousands of people flock to the neighbourhood making it one of the largest pride festivals in the world.

500 Church also benefits greatly from its proximity to Ryerson University. Distinctly urban, culturally diverse and inclusive, the university is home to over 45,000 students, including 2,300 master's and PhD students and nearly 2,700 faculty and staff. Ryerson's Athletic Centre (formally the Maple Leaf Gardens) is located steps from the site and features a full-sized 2,539 seat arena, basketball and volleyball courts, and a gym. All of Ryerson's home game sporting events take place here, as well as galas and other events that are open to the public. Below the athletic centre is an 85,000 sq. ft. Loblaws, Joe Fresh and an LCBO.



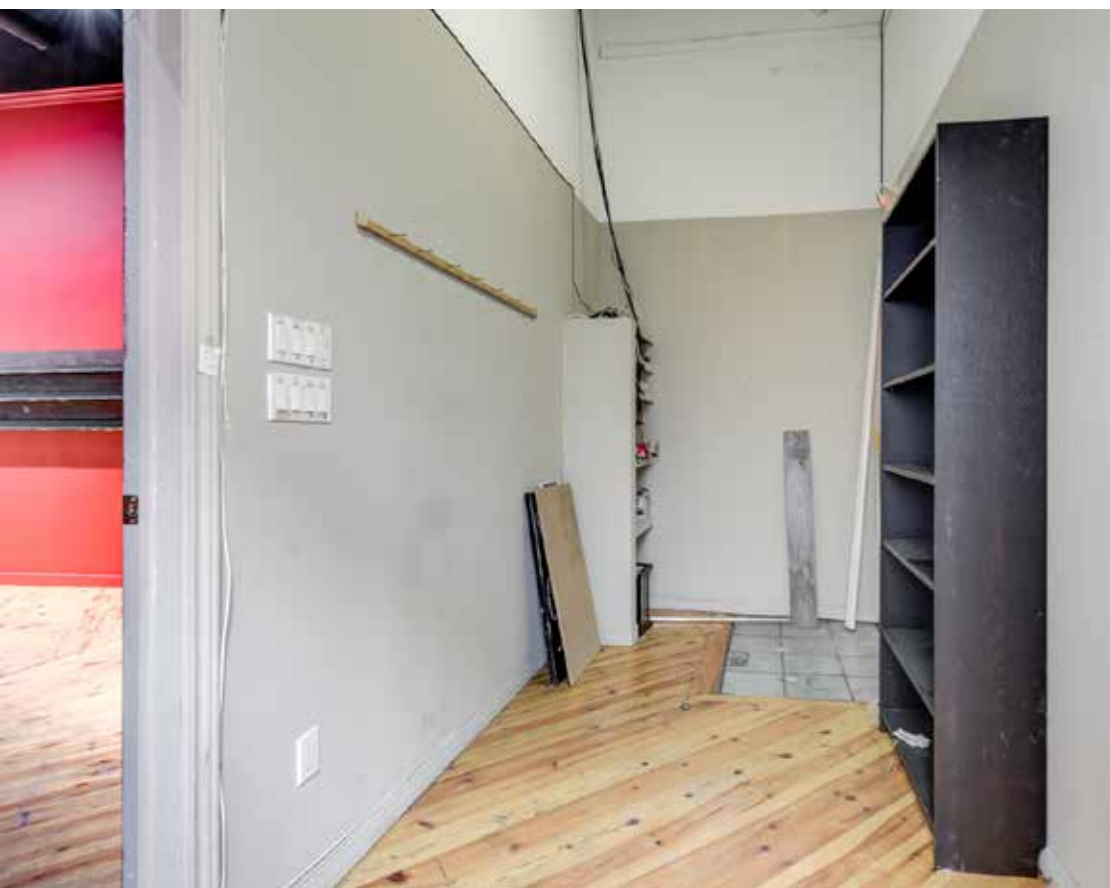
AREA CONDO DEVELOPMENTS

OVER 17,100 NEW CONDOMINIUM UNITS



CONDOS UNDER-CONSTRUCTION OR IN THE PRE-CONSTRUCTION PHASE IN THE IMMEDIATE VICINITY OF 500 CHURCH STREET

#	Condominium	Units	Status
1	280 Jarvis Street	306 units	Pre-Construction
2	308 Jarvis Street	470 units	Pre-Construction
3	Stanley Condominiums	537 units	Under Construction
4	Axis Condominium	541 units	Under Construction
5	2 Carlton	1046 units	Pre-Construction
6	YSL	1106 units	Pre-Construction
7	Grid Condos	568 units	Under Construction
8	Dundas Square Gardens	1004 units	Under Construction
9	in.DE Dundas East & Jarvis Condo	205 units	Pre-Construction
10	YC Condos	639 units	Under Construction
11	Halo Residences	451 units	Under Construction
12	TeaHouse 501 Condominiums	832 units	Under Construction
13	Wellesley on the Park	739 units	Under Construction
14	VOX Condos	337 units	Under Construction
15	50 at Wellesley Station	365 units	Under Construction
16	8 Elm	469 units	Pre-Construction
17	Eaton Chelsea Redevelopment	1,897 units	Pre-Construction
18	415 Yonge Street (Rental)	450 units	Pre-Construction
19	475 Yonge Street	1,274 units	Pre-Construction
20	10 Wellesley St W	466 units	Pre-Construction
21	552 Church Street	442 units	Pre-Construction
22	Eighty One Wellesley	179 units	Under Construction
23	Prime Condos	579 units	Pre-Construction
24	295 Jarvis Street	351 units	Pre-Construction
25	159SW Condos	360 units	Under Construction
26	Menkes 60 Shuter Street	320 units	Under Construction
27	Panda Condos	555 units	Pre-Construction
28	Social Condos	662 units	Pre-Construction



For more information
CONTACT

Arlin Markowitz*
Senior Vice President
416 815 2374
arlin.markowitz@cbre.com

Alex Edmison*
Senior Vice President
416 874 7266
alex.edmison@cbre.com

Jackson Turner**
Associate Vice President
416 815 2394
jackson.turner@cbre.com

Teddy Taggart*
Sales Associate
416 847 3254
teddy.taggart@cbre.com

Selina Tao
Sales Representative
416 815 2396
selina.tao@cbre.com

*Sales Representative, **Broker

CBRE

This disclaimer shall apply to CBRE Limited, Real Estate Brokerage, and to all other divisions of the Corporation; to include all employees and independent contractors ("CBRE"). The information set out herein, including, without limitation, any projections, images, opinions, assumptions and estimates obtained from third parties (the "Information") has not been verified by CBRE, and CBRE does not represent, warrant or guarantee the accuracy, correctness and completeness of the Information. CBRE does not accept or assume any responsibility or liability, direct or consequential, for the Information or the recipient's reliance upon the Information. The recipient of the Information should take such steps as the recipient may deem necessary to verify the Information prior to placing any reliance upon the Information. The Information may change and any property described in the Information may be withdrawn from the market at any time without notice or obligation to the recipient from CBRE. CBRE and the CBRE logo are the service marks of CBRE Limited and/or its affiliated or related companies in other countries. All other marks displayed on this document are the property of their respective owners. All Rights Reserved.