

# 62

# BATHURST STREET

**CBRE**





# SALIENT DETAILS

**Size:** 2,828 sq. ft.  
**Net Rent:** \$39.50 per sq. ft.  
**Additional Rent:** \$18.06 per sq. ft.  
**Available:** February 1, 2021

- Fully fixtured unit, move in ready
- High pedestrian and vehicular traffic
- Great exposure across the street from the future 1 Hotel Toronto (former Thompson Hotel)
- Massive amounts of residential developments in the immediate area
- Includes 411 sq. ft. Patio
- Commercial parking on-site



**280,398**  
Population\*



**34**  
Median Age\*



**\$104,528**  
Avg. Household Income

\*2019 statistics within 3km radius of subject property

**97**

**WALKSCORE**  
Walkers paradise

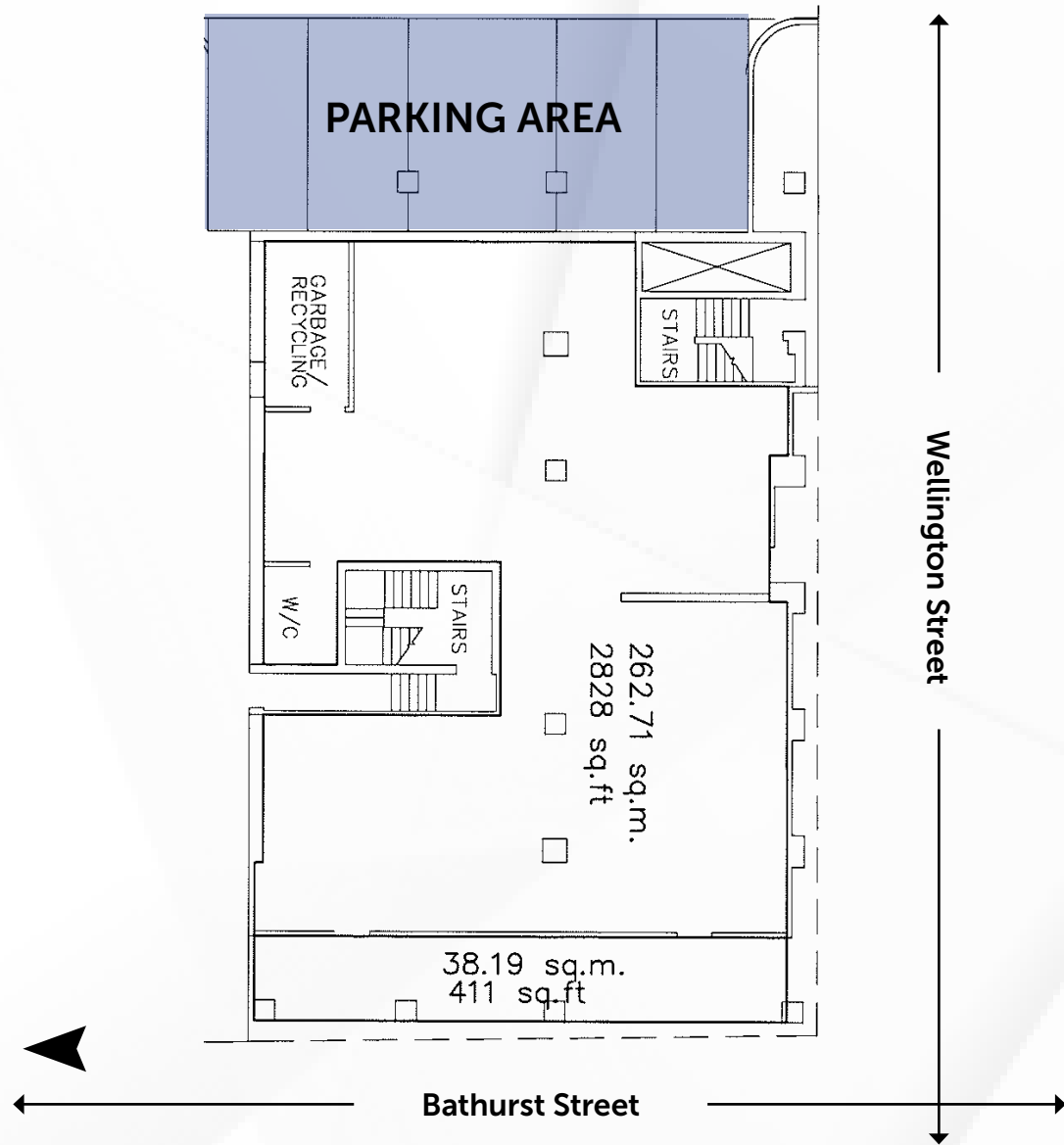
**100**

**TRANSIT SCORE**  
Rider's paradise

62 Bathurst Street



# FLOORPLAN

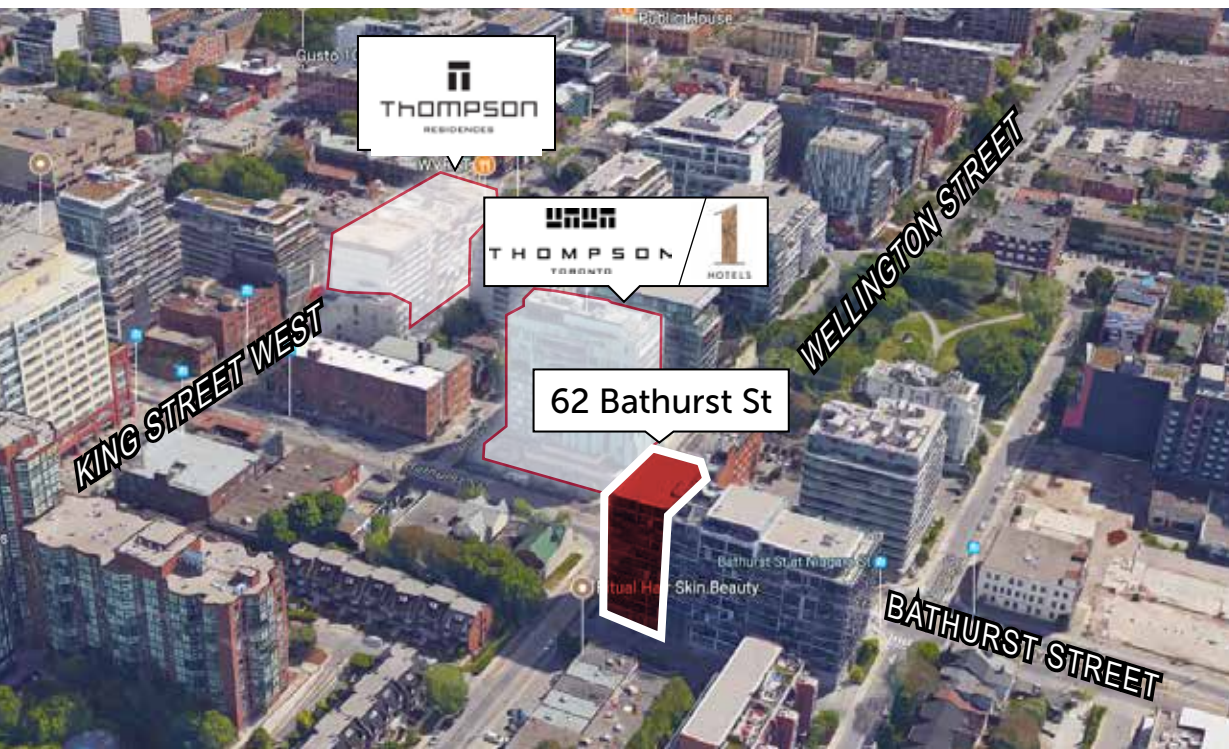




# LOCATION

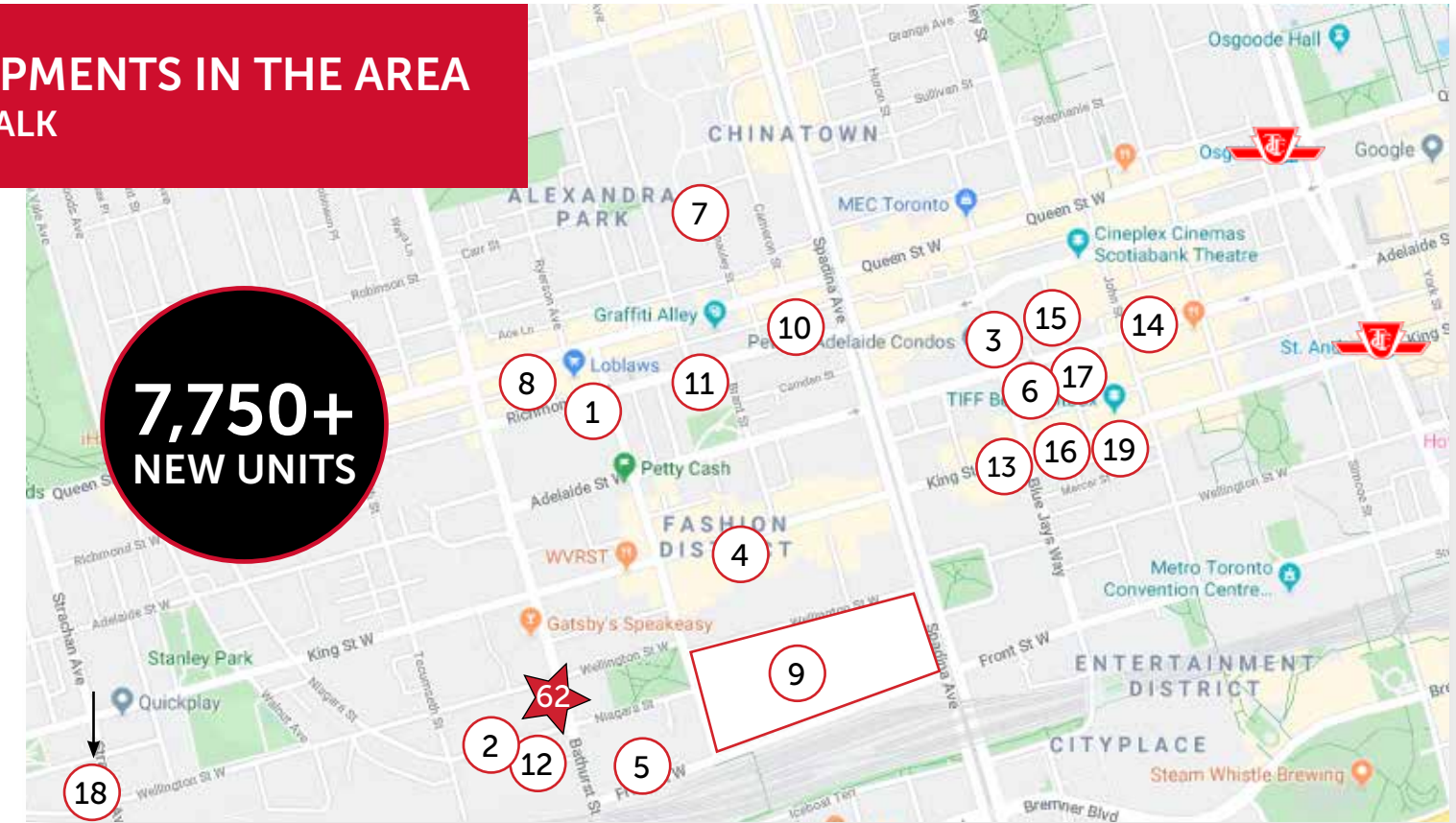
62 Bathurst Street is located in the heart of Downtown West, just steps off the best stretch of shops and restaurants of King Street West including Lavelle, Oretta, Patria, and Wilbur Mexicana. Across the street is The Thompson Hotel which will continue operating until renovation for the future 1 Hotel Toronto begins, as part of the 1 Hotel's brand of high-end luxury sustainable hotels.

62 Bathurst benefits from very high vehicular traffic and its proximity to a large number of condominium developments currently proposed and under construction, most notably downtown Toronto's largest mixed-use development The Well.



THE WELL

## CONDO DEVELOPMENTS IN THE AREA LESS THAN 20 MIN WALK



### 1. 543 Richmond

Pre-Construction  
476 Units  
Occupancy: 2022

### 2. 90 Niagara

Complete  
45 Units  
Completed: May 2019

### 3. Peter & Adelaide

Under Construction  
695 Units  
Completion: Jan 2022

### 4. King Toronto

Pre-Construction  
44 Units  
Completion: July 2023

### 5. Minto Westside

Complete  
367 Units  
Completed: May 2019

### 6. Theatre District

Under Construction  
428 Units  
Completion: Nov 2021

### 7. SQ2 Alexandra Park

Under Construction  
174 Units  
Occupancy: Nov. 2019

### 8. The Harlowe

Complete  
220 Units  
Completed: May 2018

### 9. The Well

Under Construction  
756 Units  
Completion: 2022

### 10. The Woodsworth

Under Construction  
126 Units  
Completion: Sep.2021

### 11. Waterworks

Under Construction  
275 Units  
Completion: Dec. 2020

### 12. West

Pre-Construction  
269 Units  
Completion: Feb. 2022

### 13. 357 King St W

Under Construction  
324 Units  
Completion: Oct. 2021

### 14. PJ Condos

Under Construction  
361 Units  
Completion: Feb. 2021

### 15. Central Condos

Under Construction  
426 Units  
Completion: Oct. 2021

### 16. Empire Maverick

Pre-Construction  
318 Units  
Completion: March 2022

### 17. Encore at Theatre District

Under Construction  
216 Units  
Completion: Jan 2022

### 18. Playground & Garrison Point

Under Construction  
P: 432 Units GP: 302 Units  
Completion: 2020

### 19. Bungalow on Mercer

Pre-Construction  
13 Units  
Completion: May 2021





# CBRE

## PLEASE CONTACT:

### **ARLIN MARKOWITZ\***

Senior Vice President

416 815 2374

[arlin.markowitz@cbre.com](mailto:arlin.markowitz@cbre.com)

### **ALEX EDMISON\***

Senior Vice President

416 874 7266

[alex.edmison@cbre.com](mailto:alex.edmison@cbre.com)

### **JACKSON TURNER\*\***

Vice President

416 815 2394

[jackson.turner@cbre.com](mailto:jackson.turner@cbre.com)

### **TEDDY TAGGART\***

Senior Sales Associate

416 847 3254

[teddy.taggart@cbre.com](mailto:teddy.taggart@cbre.com)

# CBRE

\*Sales Representative

\*\*Broker

This disclaimer shall apply to CBRE Limited, Real Estate Brokerage, and to all other divisions of the Corporation; to include all employees and independent contractors ("CBRE"). The information set out herein, including, without limitation, any projections, images, opinions, assumptions and estimates obtained from third parties (the "Information") has not been verified by CBRE, and CBRE does not represent, warrant or guarantee the accuracy, correctness and completeness of the Information. CBRE does not accept or assume any responsibility or liability, direct or consequential, for the Information or the recipient's reliance upon the Information. The recipient of the Information should take such steps as the recipient may deem necessary to verify the Information prior to placing any reliance upon the Information. The Information may change and any property described in the Information may be withdrawn from the market at any time without notice or obligation to the recipient from CBRE. CBRE and the CBRE logo are the service marks of CBRE Limited and/or its affiliated or related companies in other countries. All other marks displayed on this document are the property of their respective owners. All Rights Reserved.