

For Lease

113 Ossington Avenue
Toronto, ON



Details

Ground Floor: 3,426 sq. ft.

Offering

Net Rent: Please contact listing agents
Additional Rent: \$22.00 per year (estimate for 2020)
Availability: Immediately

Key Highlights

- Fully fixtured space with front of house retail and back of house office/storage space and laneway garage door loading
- Prime retail located on Ossington Avenue in proximity to over 265,000 residents and over 5 million SF of office.
- Toronto’s most electric restaurant and bar scene featuring La Banane, Mamakas, Bellwoods Brewery & Union.
- The area is a well curated retail node with Reigning Champ, Fred Perry, Aesop, Nadege, Le Labo, gravitypope, Burton, Ollie Quinn and Tiger of Sweden as key tenants.

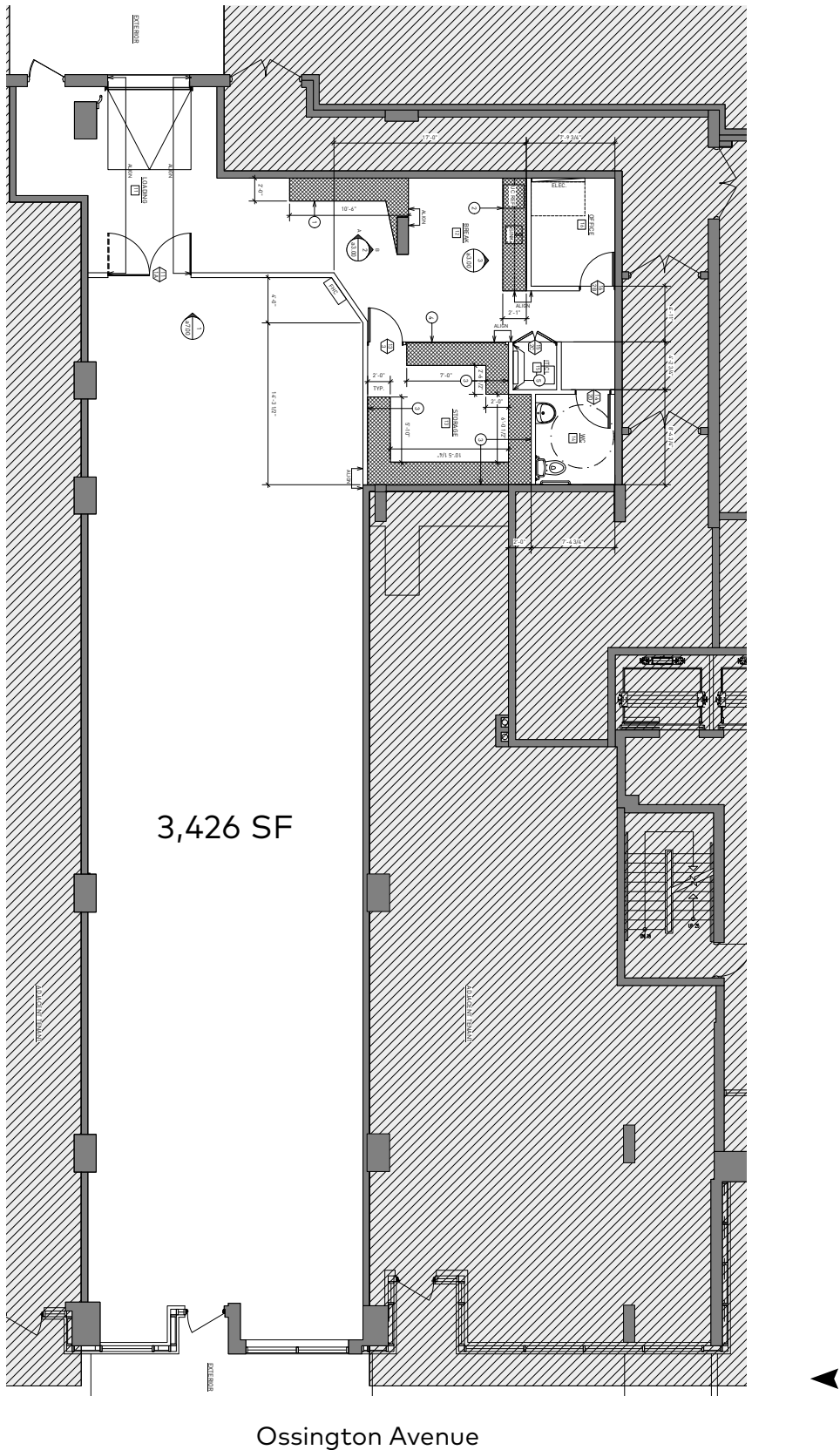


Building Summary

An exceptional opportunity to occupy 3,426 square feet of retail space located on the ground level of 109OZ, a boutique condo development with 87 residential units. The area is currently experiencing significant gentrification and is home to thousands of young and trendy professionals with above average incomes. The excellent frontage and high clear ceiling heights will give retailers an unprecedented branding opportunity on Ossington.



Floorplan



Interior Photos





FINANCIAL CORE

DOWNTOWN WEST OFFICE/
ENTERTAINMENT DISTRICT

GARDINER EXPRESSWAY

LIBERTY VILLAGE

505 Dundas
Streetcar

TRINITY BELLWOODS
PARK

WEST QUEEN WEST

Exhibition
GO Station

7%
Population Change
(2018-2019)



113 OSSINGTON

257,603
Population

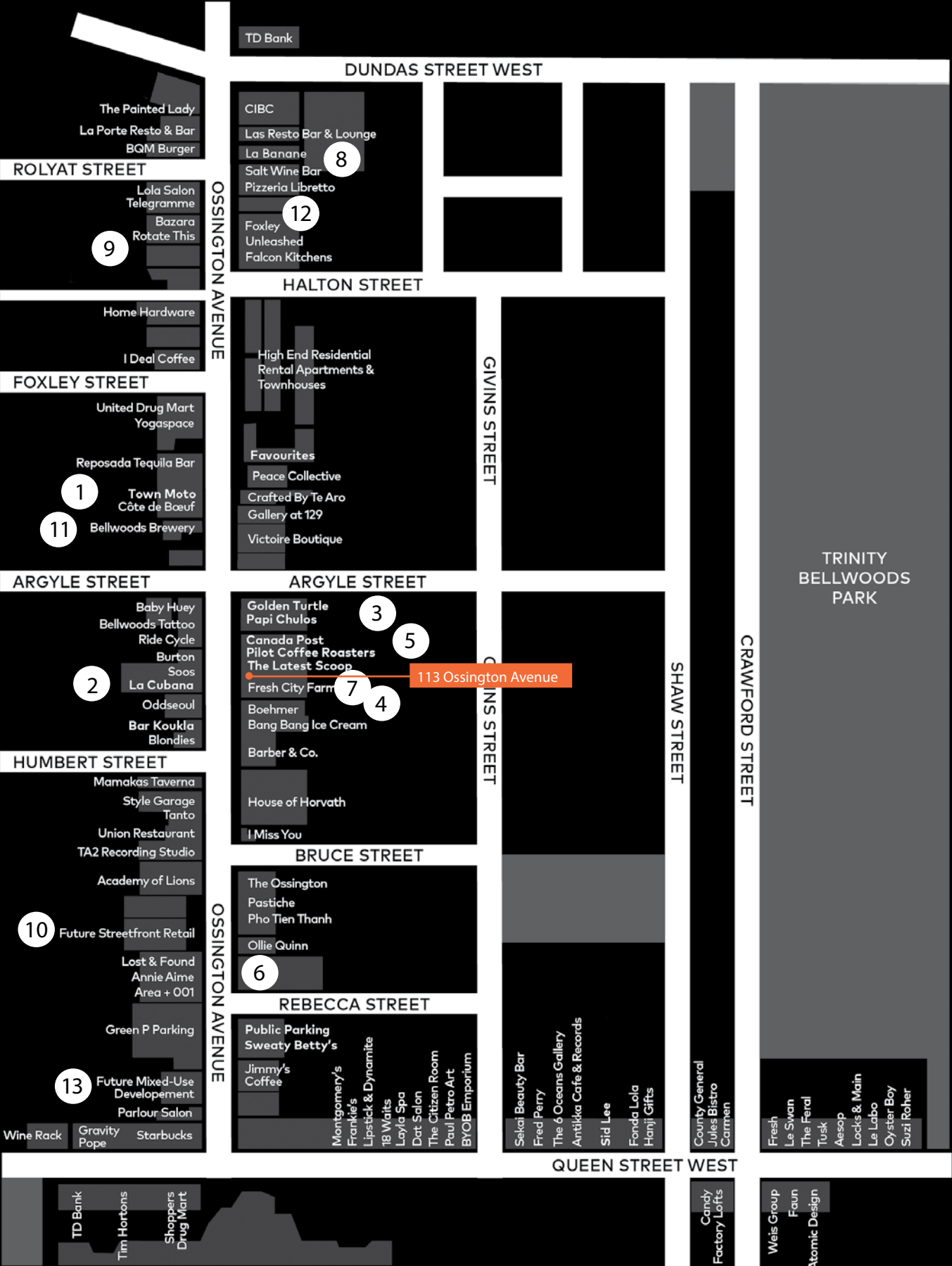
63 Ossington
Bus

\$113,400
Average Household Income

501 Queen
Streetcar

34.3
Median Age

Streetscape Map



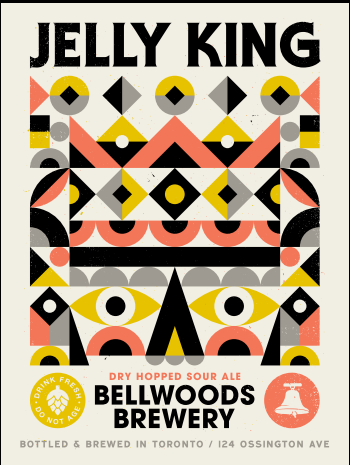
Ossington



Here Here, a neighbourhood magazine published in 2019 by Hullmark in collaboration with Public Address. They interviewed and documented the people, buildings and businesses that define the Ossington community.

1

Doublenaut Design
134 Ossington



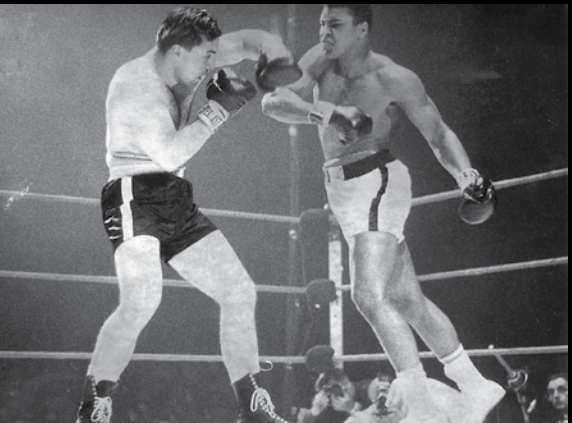
3

Golden Turtle Restaurant
125 Ossington



2

La Cubana
92 Ossington



4

Muhammad Ali vs George Chuvalo
109 Ossington

In March 1966, Muhammad Ali trained at 109 Ossington to fight Toronto-born George Chuvalo for the World Boxing Council heavyweight championship at Maple Leaf Gardens.

5

Pilot Coffee Roasters
117 Ossington



6

Reigning Champ
41 Ossington





7
111 Ossington
Fresh City Farms

"Here we're made up of so many different cultures and I think that contributes to our openness to try new things."

Brandon Olsen
La Banane
92 Ossington

8



10
46-54 Ossington
Five newly renovated character retail units



11
Bellwoods Brewery
124 Ossington



13
Fire Hall No.9, 1955
(Courtesy of Toronto Public Library)



13
12 Ossington
Designed by Hariri Pontarini Architects

"Ossington is an old street that carries a lot of history. History can be seen in its old brick buildings and industrial charm."

Gianpiero Pugliese
Audax Architecture

12

Back of House



Hullmark
474 Wellington Street West
Toronto, ON M5V 1E3
t: 416.510.1700
www.hullmark.ca



CBRE Limited.
145 King Street West, Suite 1100
Toronto, ON M5H 1J8
t: 416.362.2244
www.cbre.ca



Contact

Arlin Markowitz*

Executive Vice President

Urban Retail Team

t: 416.815.2374

arlin.markowitz@cbre.com

Alex Edmison*

Senior Vice President

Urban Retail Team

t: 416.874.7266

alex.edmison@cbre.com

Jackson Turner**

Vice President

Urban Retail Team

t: 416.815.2394

jackson.turner@cbre.com

Teddy Taggart*

Senior Sales Associate

Urban Retail Team

t: 416.847.3254

teddy.taggart@cbre.com

Emily Everett

Sales Representative

Urban Retail Team

t: 647 943 4185

emily.everett@cbre.com

***Sales Representative, **Broker**

This disclaimer shall apply to CBRE Limited, Real Estate Brokerage, and to all other divisions of the Corporation; to include all employees and independent contractors ("CBRE"). The information set out herein, including, without limitation, any projections, images, opinions, assumptions and estimates obtained from third parties (the "Information") has not been verified by CBRE, and CBRE does not represent, warrant or guarantee the accuracy, correctness and completeness of the Information. CBRE does not accept or assume any responsibility or liability, direct or consequential, for the Information or the recipient's reliance upon the Information. The recipient of the Information should take such steps as the recipient may deem necessary to verify the Information prior to placing any reliance upon the Information. The Information may change and any property described in the Information may be withdrawn from the market at any time without notice or obligation to the recipient from CBRE. CBRE and the CBRE logo are the service marks of CBRE Limited and/or its affiliated or related companies in other countries. All other marks displayed on this document are the property of their respective owners. All Rights Reserved.