

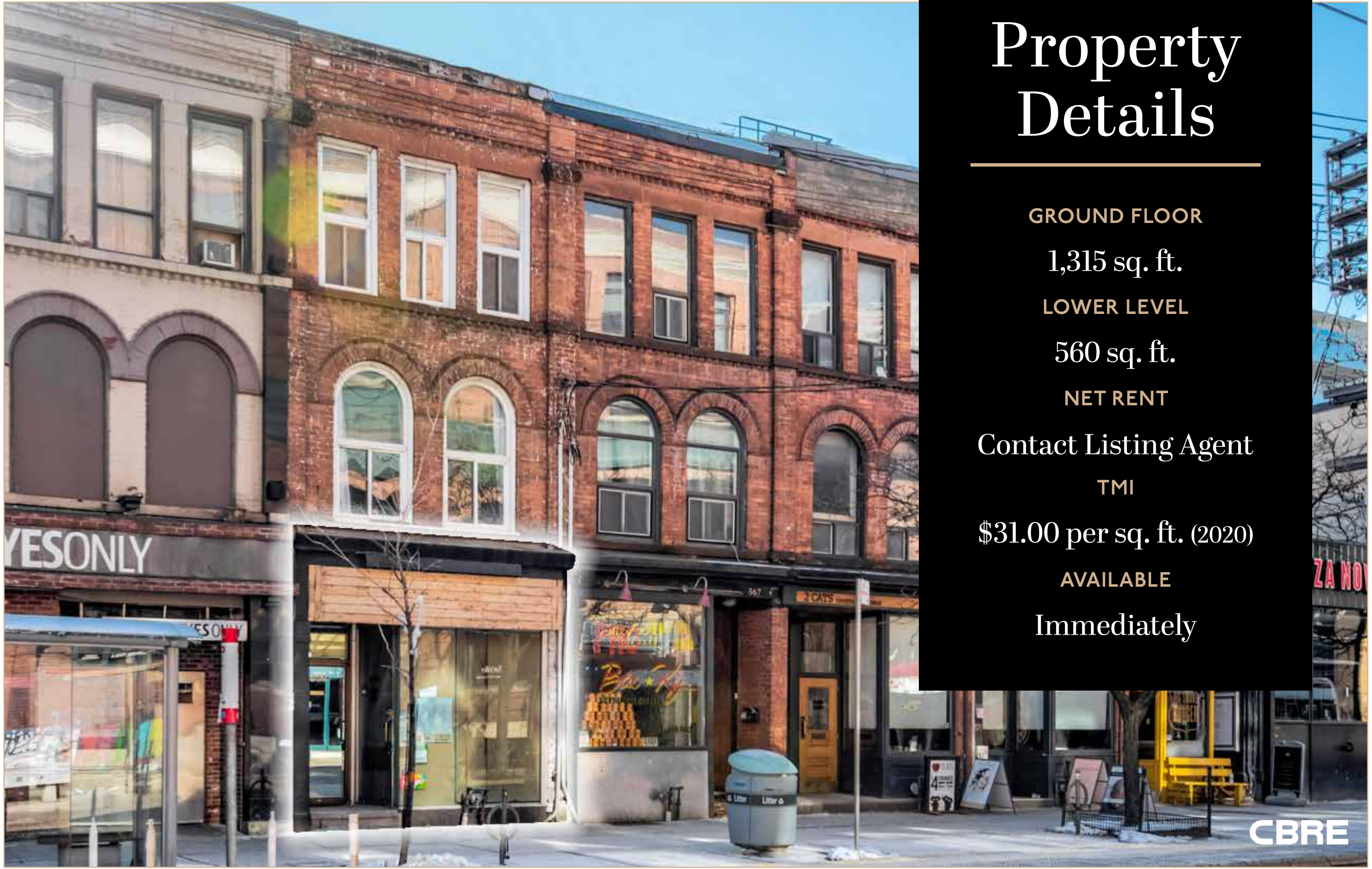
565 King STREET WEST



Photograph by Ben Rahn/A-Frame Inc.



CBRE



Property Details

GROUND FLOOR

1,315 sq. ft.

LOWER LEVEL

560 sq. ft.

NET RENT

Contact Listing Agent

TMI

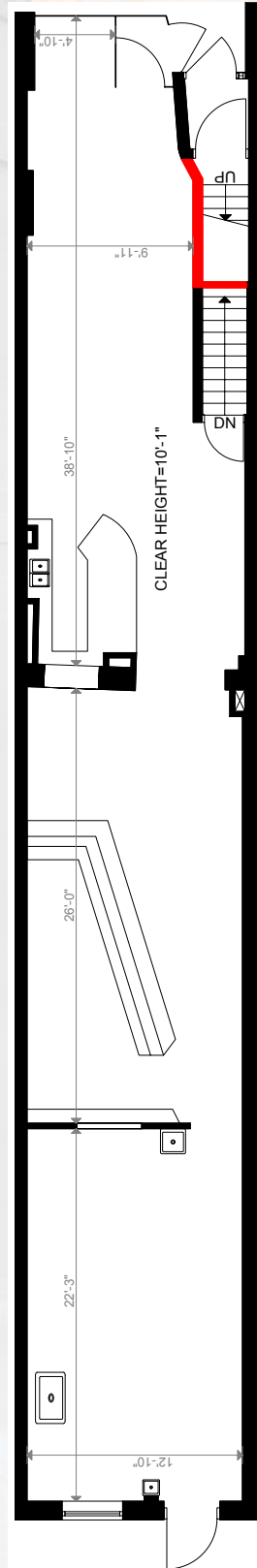
\$31.00 per sq. ft. (2020)

AVAILABLE

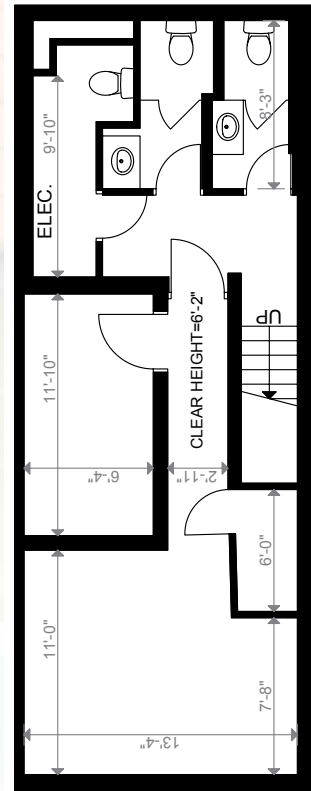
Immediately

Floorplans

King Street West



GROUND FLOOR



LOWER LEVEL

CBRE



*Within 3km of subject property as per 2019 statistics



306,137
Total Population*



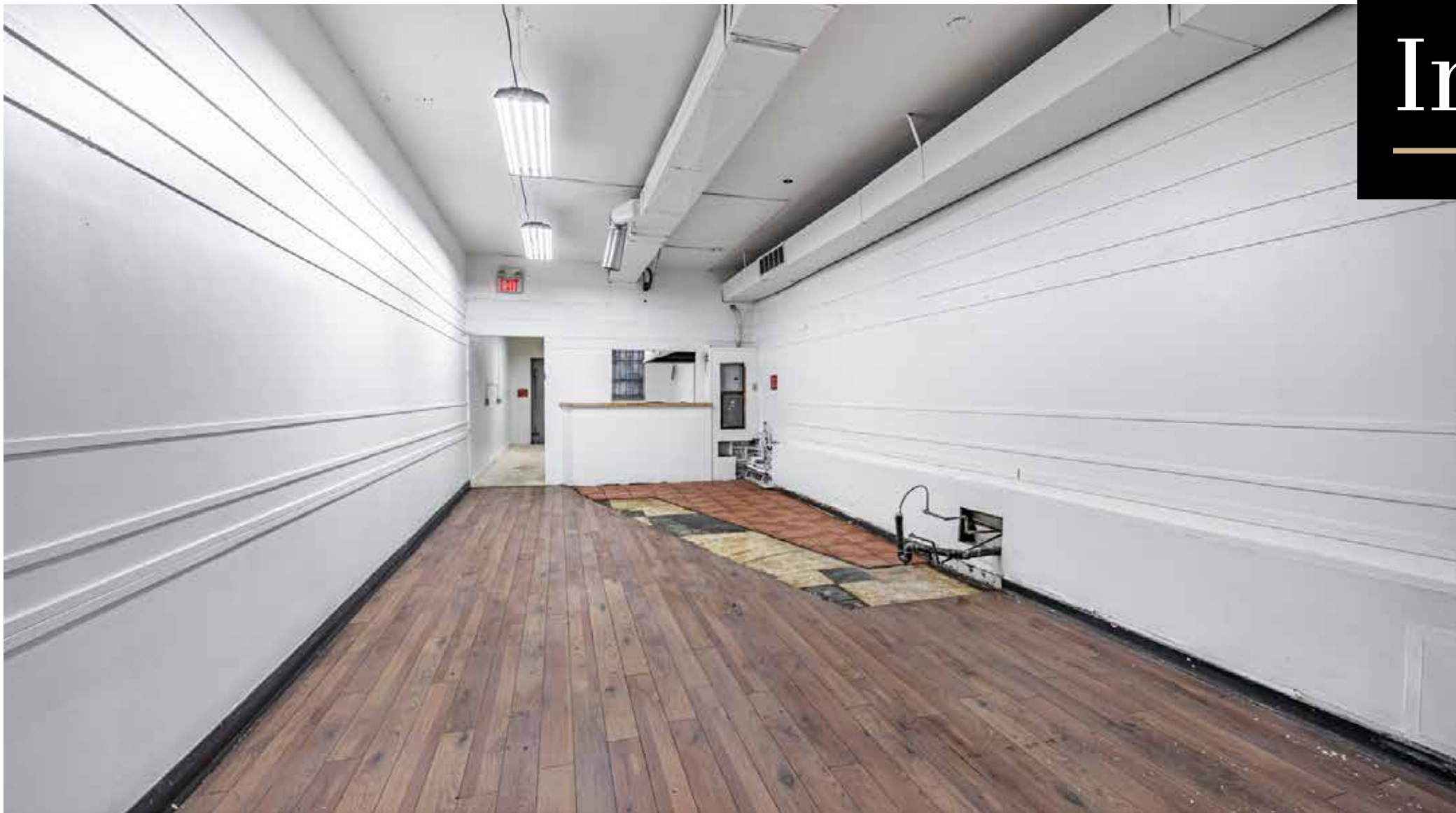
\$125,641
Avg. Household Income*



\$108,453
Expenditure per Household*



Interior Photos



The Location

King Street West is the city's only true 24/7 district, benefiting from an electric atmosphere of live, work and play pedestrian traffic.

King Street West is Toronto's most dynamic retail environment, known for the city's largest concentration of restaurants, theatres and nightlife. It has seen an increase in the diversification of retail uses, leveraging one of the largest residential development cycles in Canadian history. 565 King Street West is located on the best section of the strip, surrounded by some of Toronto's most popular restaurants and bars.

The Downtown West Toronto office market has the lowest vacancy rate in North America, boasting millions of SF of character brick-and-beam space, adding excellent foot fall to the King West retail environment.



565
KING
STREET WEST

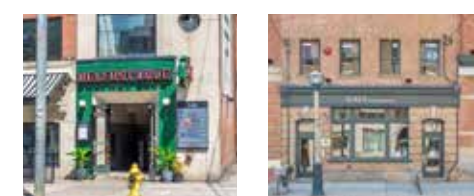
SPADINA AVENUE

KING STREET WEST

QUEEN STREET WEST

PORTLAND STREET

Area Map



**Strong
Retailer
Co-Tenancy**





Contact

Arlin Markowitz*
Executive Vice President
416.815.2374
arlin.markowitz@cbre.com

Alex Edmison*
Senior Vice President
416.874.7266
alex.edmison@cbre.com

Jackson Turner**
Vice President
416.815.2394
jackson.turner@cbre.com

Teddy Taggart*
Senior Sales Associate
416.847.3254
teddy.taggart@cbre.com

*Sales Representative, **Broker



CBRE

This disclaimer shall apply to CBRE Limited, Real Estate Brokerage, and to all other divisions of the Corporation; to include all employees and independent contractors ("CBRE"). The information set out herein, including, without limitation, any projections, images, opinions, assumptions and estimates obtained from third parties (the "Information") has not been verified by CBRE, and CBRE does not represent, warrant or guarantee the accuracy, correctness and completeness of the Information. CBRE does not accept or assume any responsibility or liability, direct or consequential, for the Information or the recipient's reliance upon the Information. The recipient of the Information should take such steps as the recipient may deem necessary to verify the Information prior to placing any reliance upon the Information. The Information may change and any property described in the Information may be withdrawn from the market at any time without notice or obligation to the recipient from CBRE. CBRE and the CBRE logo are the service marks of CBRE Limited and/or its affiliated or related companies in other countries. All other marks displayed on this document are the property of their respective owners. All Rights Reserved.