



856
DUNDAS
STREET WEST

PRIME RETAIL AT THE CORNER OF DUNDAS & MANNING

CBRE LIMITED, REAL ESTATE BROKERAGE | 145 KING STREET WEST | SUITE 1100 | TORONTO, ON M5H 1J8 | 416 362 2244 | WWW.CBRE.CA



Prime Retail for Lease

Size: **Unit 1:** 1,620 sq. ft.
~~**Unit 2:** 1,808 sq. ft.~~ **LEASED!**
~~**Unit 3:** 1,610 sq. ft.~~ **LEASED!**

Net Rent: \$28.00 per sq. ft.

TMI: \$15.84 per sq. ft.

Available: Immediately

Ceiling: 18 ft.

- > Ideal for all uses
- > Double door entrance off Dundas Street West
- > Rear loading dock
- > Sprinklered
- > Plumbing to be completed

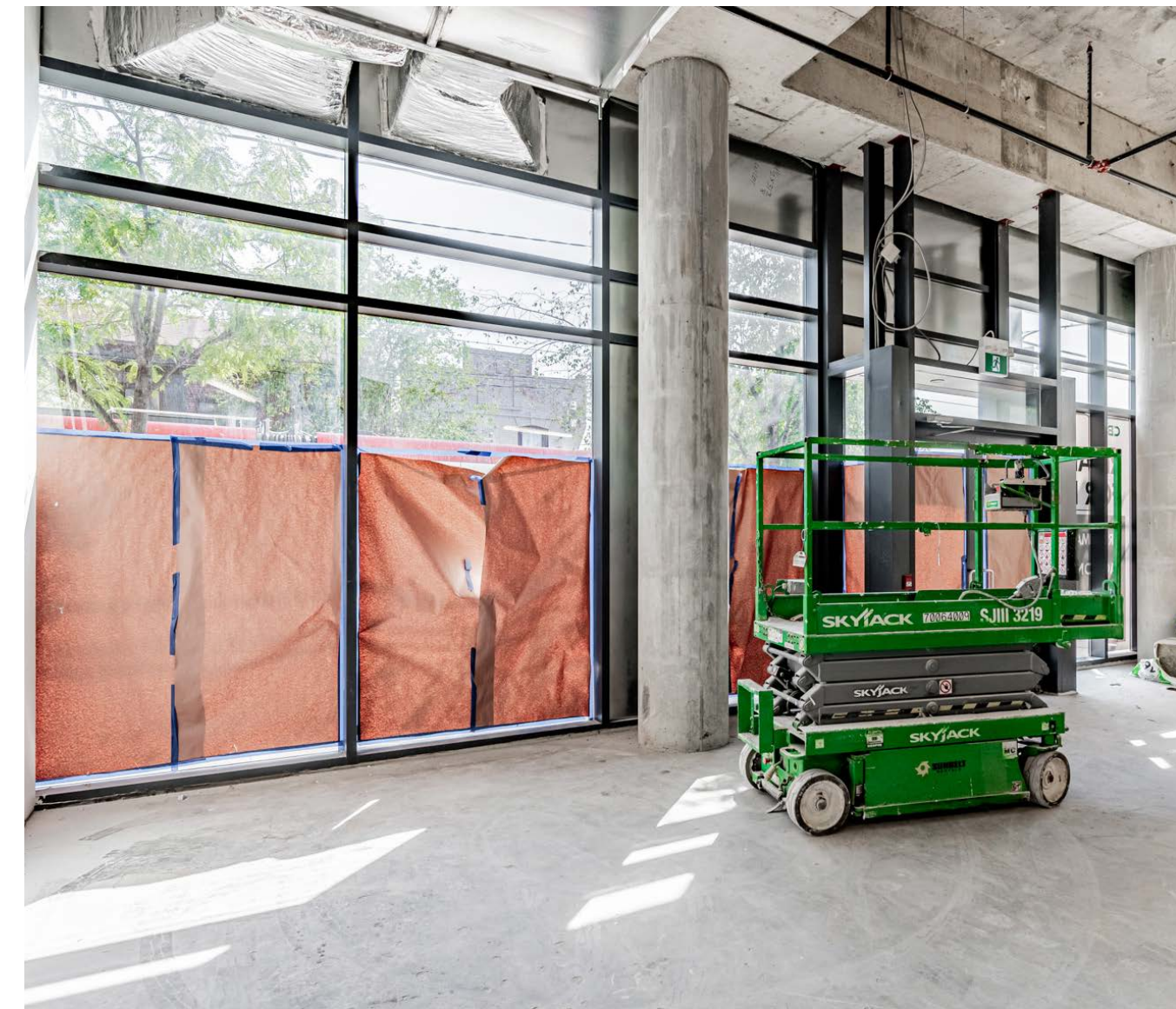
CBRE



CBRE



856
DUNDAS
STREET WEST





The Location

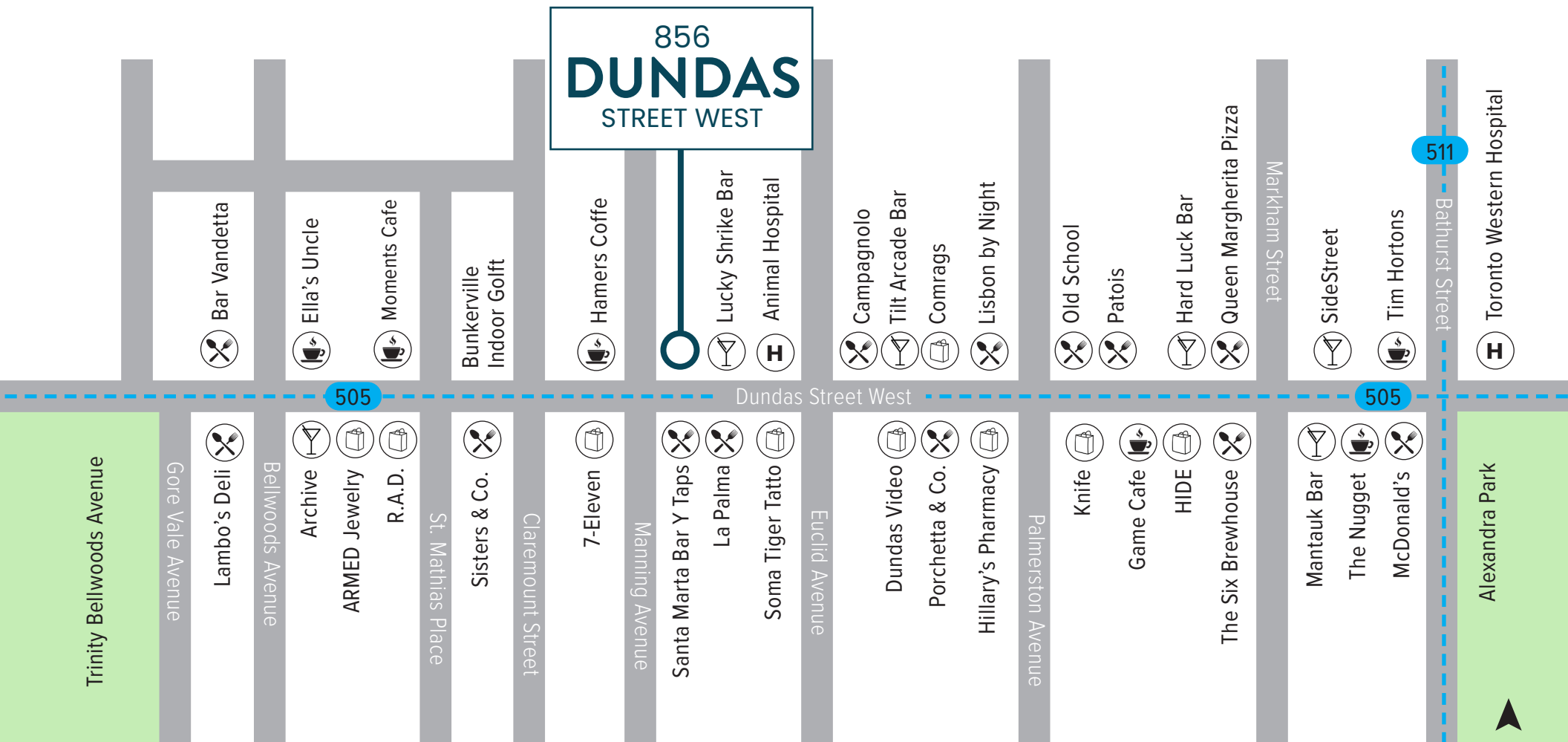
856 Dundas Street West is located on a highly visible corner on Dundas West, a popular destination for local retail boutiques, cafes and some of Toronto's most popular bars and restaurants. It is easily accessible via the 505 Dundas Streetcar (east/west) and is within walking distance to Bathurst Street and the 511 Bathurst Streetcar (north/south). Little Italy, West Queen West, Kensington Market and Trinity Bellwoods Park are all just a few minutes walk away.

Popular neighbouring tenants include Patois, Mejuri, Old School, Lambo's Deli, Ellas Uncle and La Palma.



CBRE

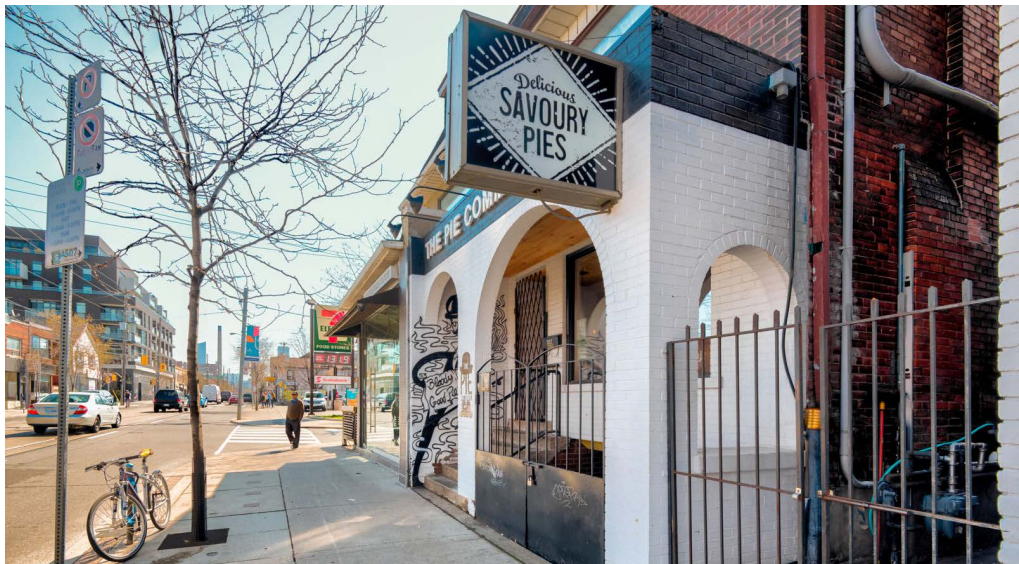
Neighbouring Tenants



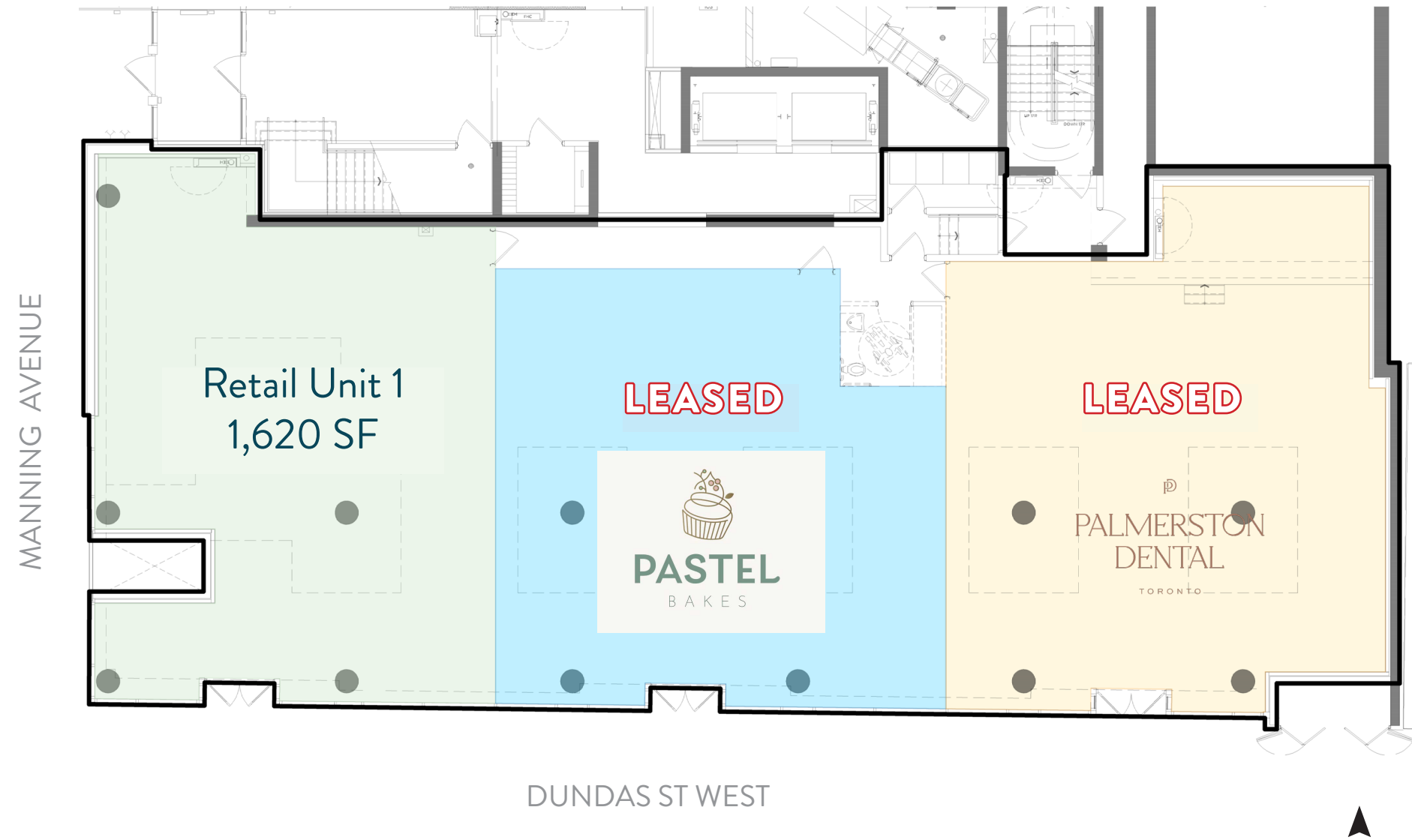
 5 Min Walk
to Trinity Bellwoods Park

 5 Min Walk
to Bathurst Street

 Serviced by
the 505 Dundas Streetcar



Floor Plan



856
DUNDAS
STREET WEST

Arlin Markowitz*
Executive Vice President
416 815 2374
arlin.markowitz@cbre.com

Alex Edmison*
Senior Vice President
416 874 7266
alex.edmison@cbre.com

Jackson Turner**
Senior Vice President
416 815 2394
jackson.turner@cbre.com

Teddy Taggart*
Vice President
416 847 3254
teddy.taggart@cbre.com

Emily Everett*
Sales Associate
647 943 4185
emily.everett@cbre.com

*Sales Representative
**Broker

CBRE

This disclaimer shall apply to CBRE Limited, Real Estate Brokerage, and to all other divisions of the Corporation; to include all employees and independent contractors ("CBRE"). The information set out herein, including, without limitation, any projections, images, opinions, assumptions and estimates obtained from third parties (the "Information") has not been verified by CBRE, and CBRE does not represent, warrant or guarantee the accuracy, correctness and completeness of the Information. CBRE does not accept or assume any responsibility or liability, direct or consequential, for the Information or the recipient's reliance upon the Information. The recipient of the Information should take such steps as the recipient may deem necessary to verify the Information prior to placing any reliance upon the Information. The Information may change and any property described in the Information may be withdrawn from the market at any time without notice or obligation to the recipient from CBRE. CBRE and the CBRE logo are the service marks of CBRE Limited and/or its affiliated or related companies in other countries. All other marks displayed on this document are the property of their respective owners. All Rights Reserved.