

CBRE



37

*King Street East*





# 37

## King Street East

**SIZE**

589 sq. ft.

**NET RENT:**

\$60.00 per sq. ft.

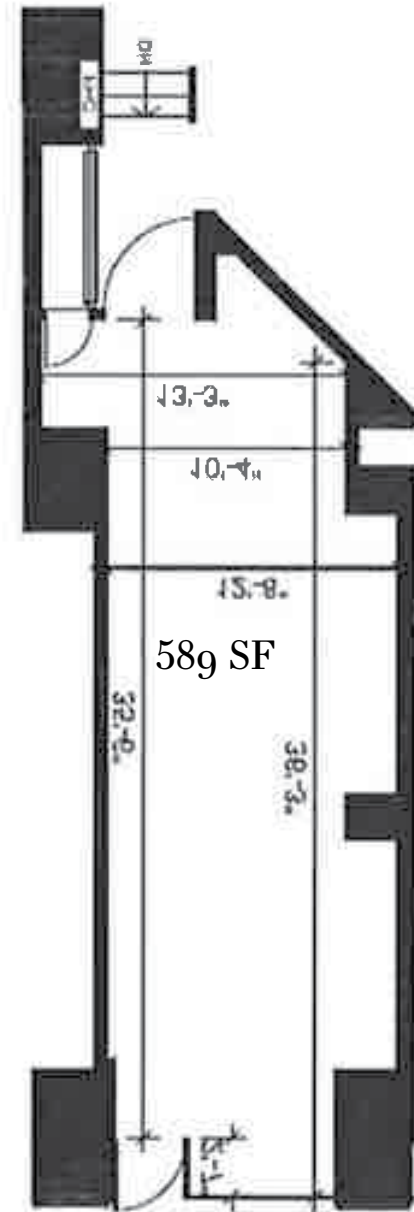
**TMI:**

\$20.00 per sq. ft.

**AVAILABLE:**

Immediately

*King Edward Hotel Lobby*

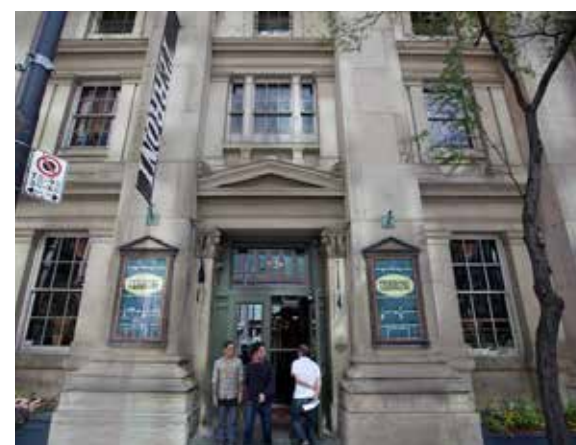


*King Street East*



- Rare opportunity to secure small street level space in a character building one block from the financial core
- Unit has both interior and exterior access to the hotel and street front entrance
- Ideal for a retail fashion store, hotel amenity or other complimentary service use
- No food uses





37

King Street East

37 King Street East is located within the King Edward Hotel and is ideally situated between Toronto's downtown financial district and the King East Design District. It is within walking distance to all major attractions (CN Tower, Air Canada Centre, Dundas Square, the Eaton Centre) and is surrounded by some of the city's most popular restaurants and bars including Terroni, Copetin, Carbon Bar and Carisma.

Downtown East is currently experiencing rapid residential growth with an estimated 17% population change between 2016-2021, bringing the population up to 45,215 people within a 1km radius of the King Edward Hotel.

37 King East is close to all major transportation hubs. It is located directly on the King Streetcar line and is one block east of the Yonge subway line. Union Station is also located within walking distance.



# Please Contact:

**ARLIN MARKOWITZ\***  
Senior Vice President  
416 815 2374  
arlin.markowitz@cbre.com

**ALEX EDMISON\***  
Senior Vice President  
416 874 7266  
alex.edmison@cbre.com

**JACKSON TURNER\*\***  
Associate Vice President  
416 815 2394  
jackson.turner@cbre.com

**TEDDY TAGGART\***  
Sales Associate  
416 847 3254  
teddy.taggart@cbre.com

**SELINA TAO\***  
Sales Representative  
416 815 2396  
selina.tao@cbre.com

\*Sales Representative  
\*\*Broker

# CBRE

This disclaimer shall apply to CBRE Limited, Real Estate Brokerage, and to all other divisions of the Corporation; to include all employees and independent contractors ("CBRE"). The information set out herein, including, without limitation, any projections, images, opinions, assumptions and estimates obtained from third parties (the "Information") has not been verified by CBRE, and CBRE does not represent, warrant or guarantee the accuracy, correctness and completeness of the Information. CBRE does not accept or assume any responsibility or liability, direct or consequential, for the Information or the recipient's reliance upon the Information. The recipient of the Information should take such steps as the recipient may deem necessary to verify the Information prior to placing any reliance upon the Information. The Information may change and any property described in the Information may be withdrawn from the market at any time without notice or obligation to the recipient from CBRE. CBRE and the CBRE logo are the service marks of CBRE Limited and/or its affiliated or related companies in other countries. All other marks displayed on this document are the property of their respective owners. All Rights Reserved.