

644

BLOOR STREET WEST

CBRE



644

BLOOR STREET WEST

Ground Floor
1,246 sq. ft.

Basement
755 sq. ft.

Net Rent
Call Agents to Discuss

TMI
~ \$15.00 per sq. ft.

Available
Immediately

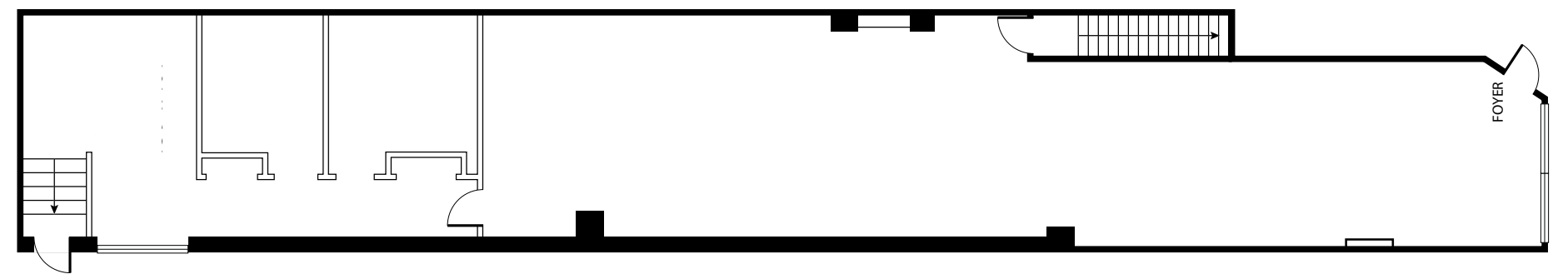
- Ideally located where Koreatown meets The Annex
- Steps from Christie subway station and Bathurst subway station
- Excellent frontage on the north side of the street



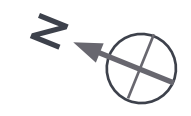
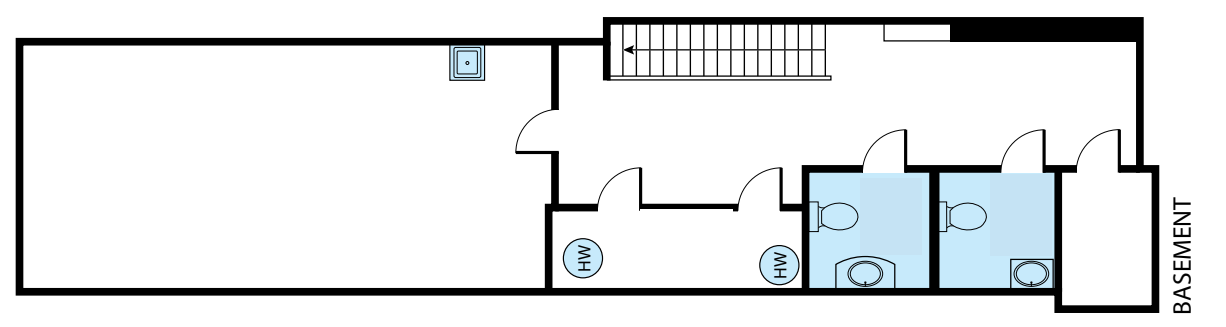
CBRE

FLOORPLANS & INTERIOR

MAIN FLOOR



BASEMENT



644

BLOOR STREET WEST

Ideally situated where Koreatown meets The Annex, one of Toronto's oldest and most diverse neighbourhoods. The area has a very strong sense of community and the residents are a mix of students and faculty from the University of Toronto as well as artists and upper-middle class families.

Bloor Street West in particular is a lively area that has an eclectic mix of bars, casual eateries, bookshops, restaurants and boutique shops to fit all needs. Some notable nearby retailers include: Kinka Izakaya, Tosho Knife Arts, The White Brick Kitchen, Owl of Minerva, Sam James Coffee, Hanji, and El Furniture Warehouse.

100

RIDER'S PARADISE

98

WALKER'S PARADISE



349,095
TOTAL POPULATION

\$125,369
AVG. HOUSEHOLD INCOME

398,712
DAYTIME POPULATION

35.4
MEDIAN AGE





CBRE

CONTACT

Arlin Markowitz*
Senior Vice President
416 815 2374
arlin.markowitz@cbre.com

Alex Edmison*
Senior Vice President
416 874 7266
alex.edmison@cbre.com

Jackson Turner**
Associate Vice President
416 815 2394
jackson.turner@cbre.com

Teddy Taggart*
Sales Associate
416 847 3254
teddy.taggart@cbre.com

*Sales Representative **Broker

This disclaimer shall apply to CBRE Limited, Real Estate Brokerage, and to all other divisions of the Corporation; to include all employees and independent contractors ("CBRE"). The information set out herein, including, without limitation, any projections, images, opinions, assumptions and estimates obtained from third parties (the "Information") has not been verified by CBRE, and CBRE does not represent, warrant or guarantee the accuracy, correctness and completeness of the Information. CBRE does not accept or assume any responsibility or liability, direct or consequential, for the Information or the recipient's reliance upon the Information. The recipient of the Information should take such steps as the recipient may deem necessary to verify the Information prior to placing any reliance upon the Information. The Information may change and any property described in the Information may be withdrawn from the market at any time without notice or obligation to the recipient from CBRE. CBRE and the CBRE logo are the service marks of CBRE Limited and/or its affiliated or related companies in other countries. All other marks displayed on this document are the property of their respective owners. All Rights Reserved.