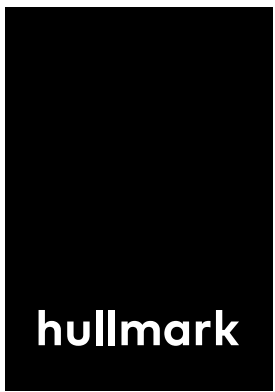


1 UNIT REMAINING



FORTY SIX - FIFTY FOUR
OSSINGTON AVENUE



NEW CHARACTER RETAIL FOR LEASE ON OSSINGTON AVE

CBRE



CLICK HERE
FOR NEIGHBOURHOOD
VIDEO

hullmark

46 Ossington

Offering

Net Rent: Please contact listing agents

Additional Rent: \$20.00 per sq. ft. (estimate for 2020)

Availability: Immediately

Size:	Basement:	900 sf
	Ground:	1,225 sf
	Total:	2,125 sf

Highlights

- Full building renovation with 5 character retail units.
- Ground floor retail units feature double-height rear additions.
- Potential for full building lease.
- Prime retail located on Ossington Avenue in proximity to over 265,000 residents and over 5 million SF of office.
- Toronto's most electric restaurant and bar scene featuring La Banane, Mamakas, Bellwoods Brewery & Union.
- The area is a well curated retail node with Reigning Champ, Fred Perry, Aesop, Nadege, Le Labo, gravitypop, Burton, Ollie Quinn and Tiger of Sweden as key tenants.



46 Ossington
Last Remaining Unit



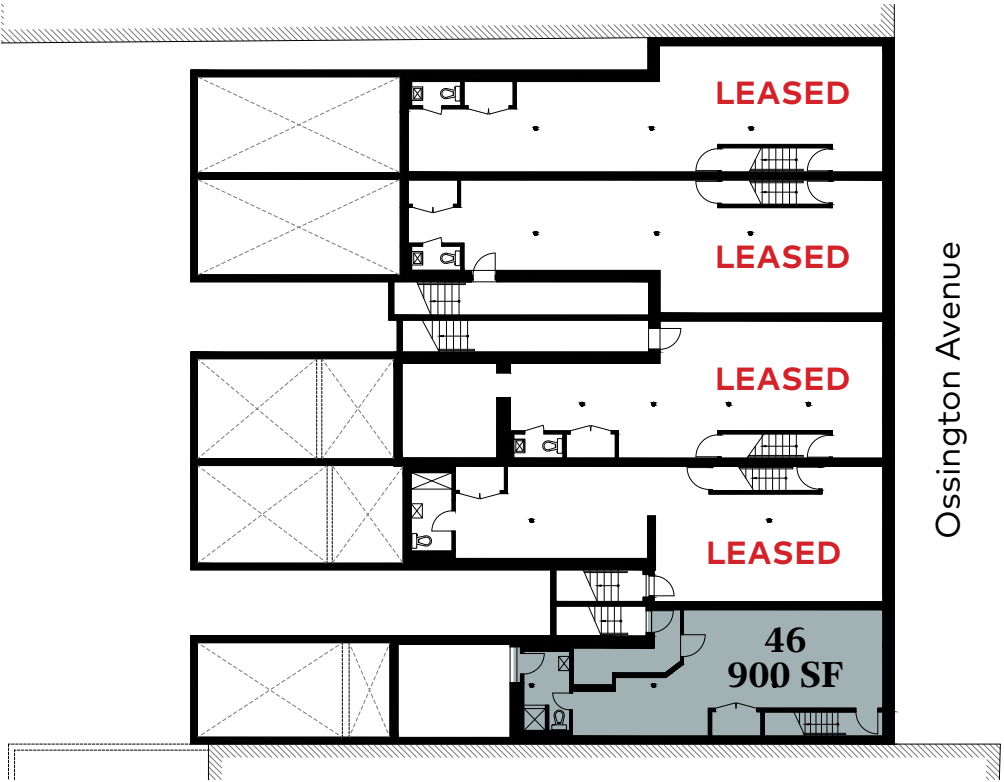
[Click here for more information and additional images](#)

Interior Renderings

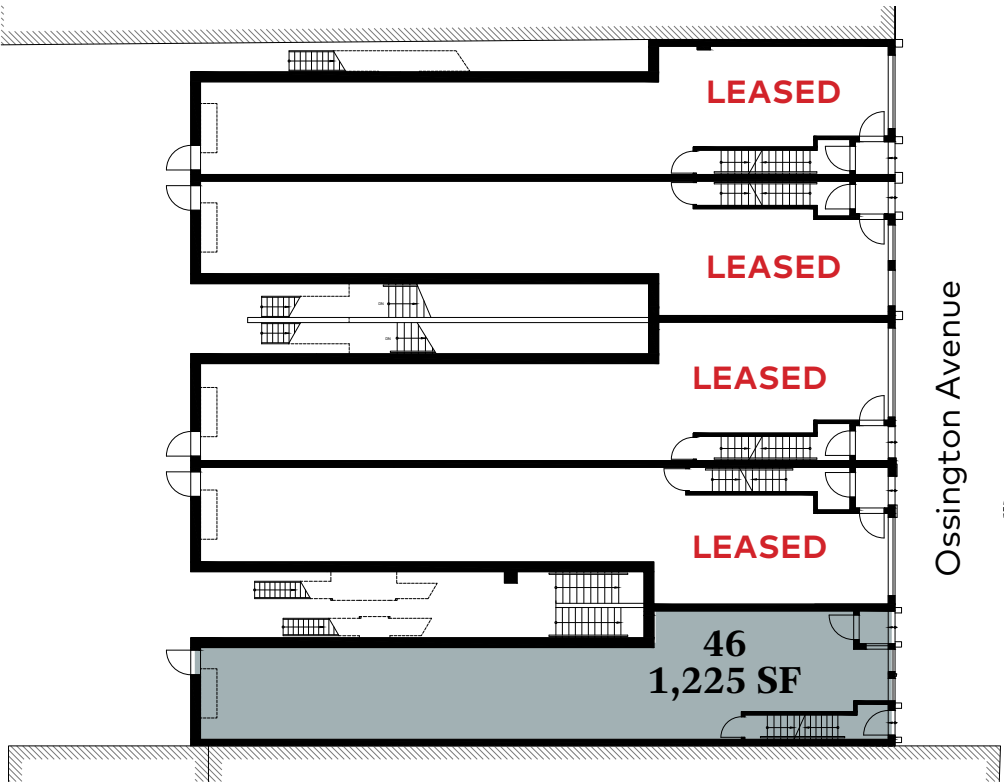


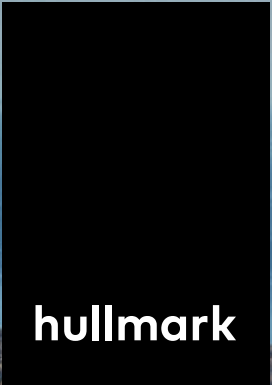
Floor Plans

Basement Floor Plan



Ground Floor Plan





FINANCIAL CORE

DOWNTOWN WEST OFFICE/
ENTERTAINMENT DISTRICT

GARDINER EXPRESSWAY

LIBERTY VILLAGE

505 Dundas
Streetcar

TRINITY BELLWOODS
PARK

WEST QUEEN WEST

Exhibition
GO Station

7%
Population Change
(2018-2019)

46-54
OSSINGTON
AVENUE

257,603
Population

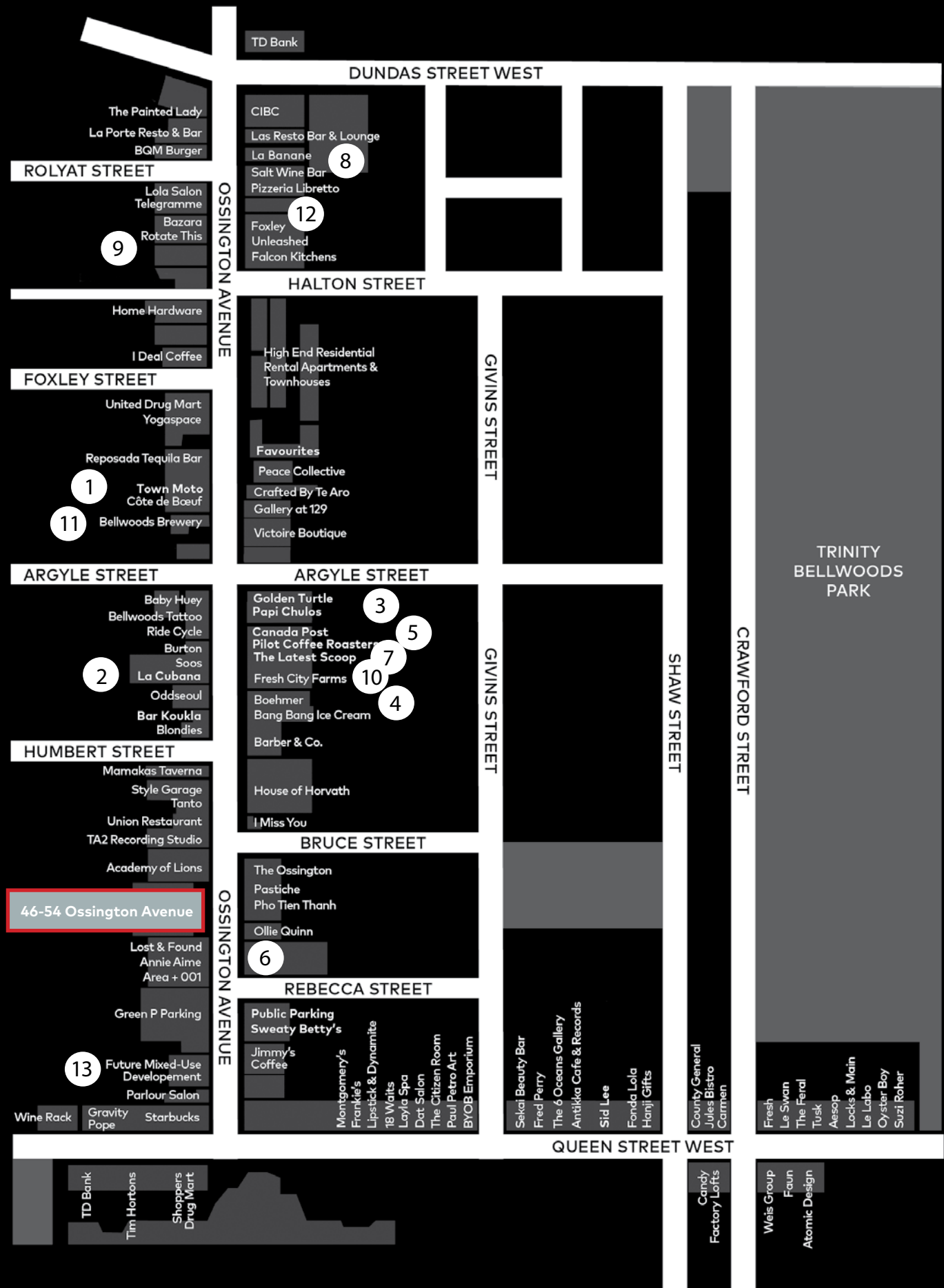
34.3
Median Age

\$113,400
Average Household Income

63 Ossington
Bus

501 Queen
Streetcar

Streetscape Map



Ossington



Here Here, a neighbourhood magazine published in 2019 by Hullmark in collaboration with Public Address. They interviewed and documented the people, buildings and businesses that define the Ossington community.

1

Doublenaut Design
134 Ossington



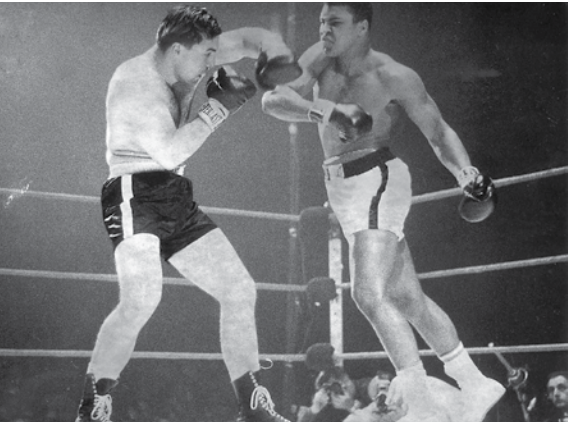
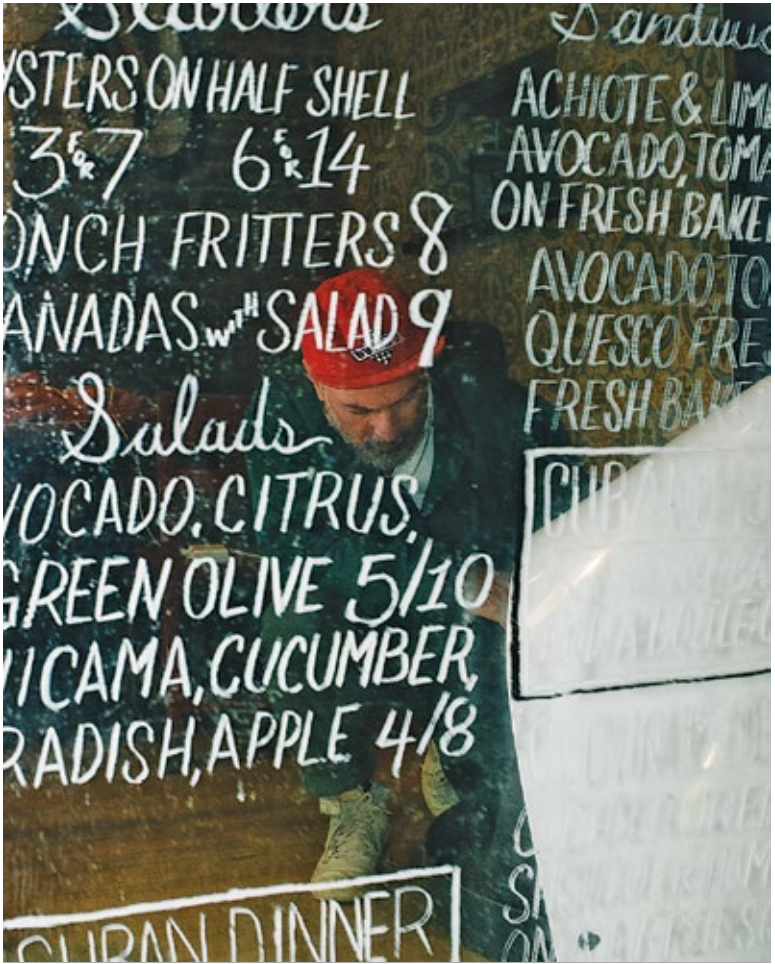
3

Golden Turtle Restaurant
125 Ossington



2

La Cubana
92 Ossington



4

Muhammad Ali vs George Chuvalo
109 Ossington

In March 1966, Muhammad Ali trained at 109 Ossington to fight Toronto-born George Chuvalo for the World Boxing Council heavyweight championship at Maple Leaf Gardens.



5

Pilot Coffee Roasters
117 Ossington

6

Reigning Champ
41 Ossington



"Here we're made up of so many different cultures and I think that contributes to our openness to try new things."

Brandon Olsen
La Banane
92 Ossington

8



7

The Latest Scoop
113 Ossington

9

Favorites / Superpoint
141 & 184 Ossington



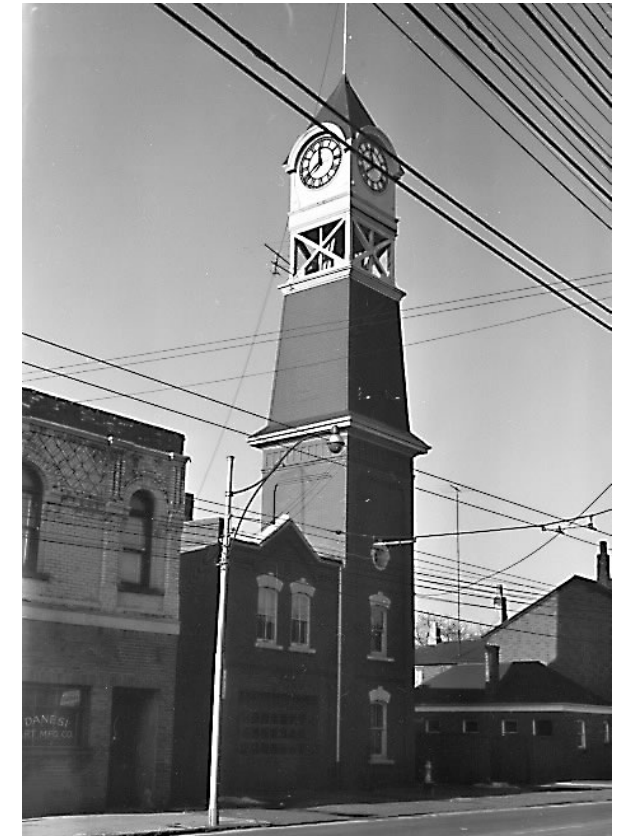
10

Fresh City Farms
111 Ossington



11

Bellwoods Brewery
124 Ossington



13

Fire Hall No.9, 1955
(Courtesy of Toronto Public Library)



13

12 Ossington
Designed by Hariri Pontarini Architects

"Ossington is an old street that carries a lot of history. History can be seen in its old brick buildings and industrial charm."

Gianpiero Pugliese
Audax Architecture

12



Retail Advisory Team

Arlin Markowitz*	Alex Edmison*
Executive Vice President	Senior Vice President
Urban Retail Team	Urban Retail Team
t: 416.815.2374	t: 416.874.7266
arlin.markowitz@cbre.com	alex.edmison@cbre.com
Jackson Turner**	Teddy Taggart*
Vice President	Senior Sales Associate
Urban Retail Team	Urban Retail Team
t: 416.815.2394	t: 416.847.3254
jackson.turner@cbre.com	teddy.taggart@cbre.com

*Sales Representative, **Broker



This disclaimer shall apply to CBRE Limited, Real Estate Brokerage, and to all other divisions of the Corporation; to include all employees and independent contractors ("CBRE"). The information set out herein, including, without limitation, any projections, images, opinions, assumptions and estimates obtained from third parties (the "Information") has not been verified by CBRE, and CBRE does not represent, warrant or guarantee the accuracy, correctness and completeness of the Information. CBRE does not accept or assume any responsibility or liability, direct or consequential, for the Information or the recipient's reliance upon the Information. The recipient of the Information should take such steps as the recipient may deem necessary to verify the Information prior to placing any reliance upon the Information. The Information may change and any property described in the Information may be withdrawn from the market at any time without notice or obligation to the recipient from CBRE. CBRE and the CBRE logo are the service marks of CBRE Limited and/or its affiliated or related companies in other countries. All other marks displayed on this document are the property of their respective owners. All Rights Reserved.