

CBRE

755  
DOVERCOURT



## RETAIL FOR LEASE AT BLOOR STREET WEST & DOVERCOURT

CBRE Limited, Real Estate Brokerage 145 King Street West Suite 1100 | Toronto, ON M5H 1J8 | 416-362-2244 | [www.cbre.ca](http://www.cbre.ca)

# RETAIL FOR LEASE

Size: 788 sq. ft.  
Rent: Please contact listing agents  
TMI: \$16.84 per sq. ft.

- » Turn-key unit
- » Renovated space with updated HVAC, electrical and lighting
- » Excellent location at Bloor & Dovercourt
- » Heavy vehicular and pedestrian foot traffic
- » Walking distance to both Ossington and Dufferin subway stations



**\$94,634**

AVERAGE HOUSEHOLD INCOME\*



**30,840**

ESTIMATED POPULATION\*



**\$103,584**

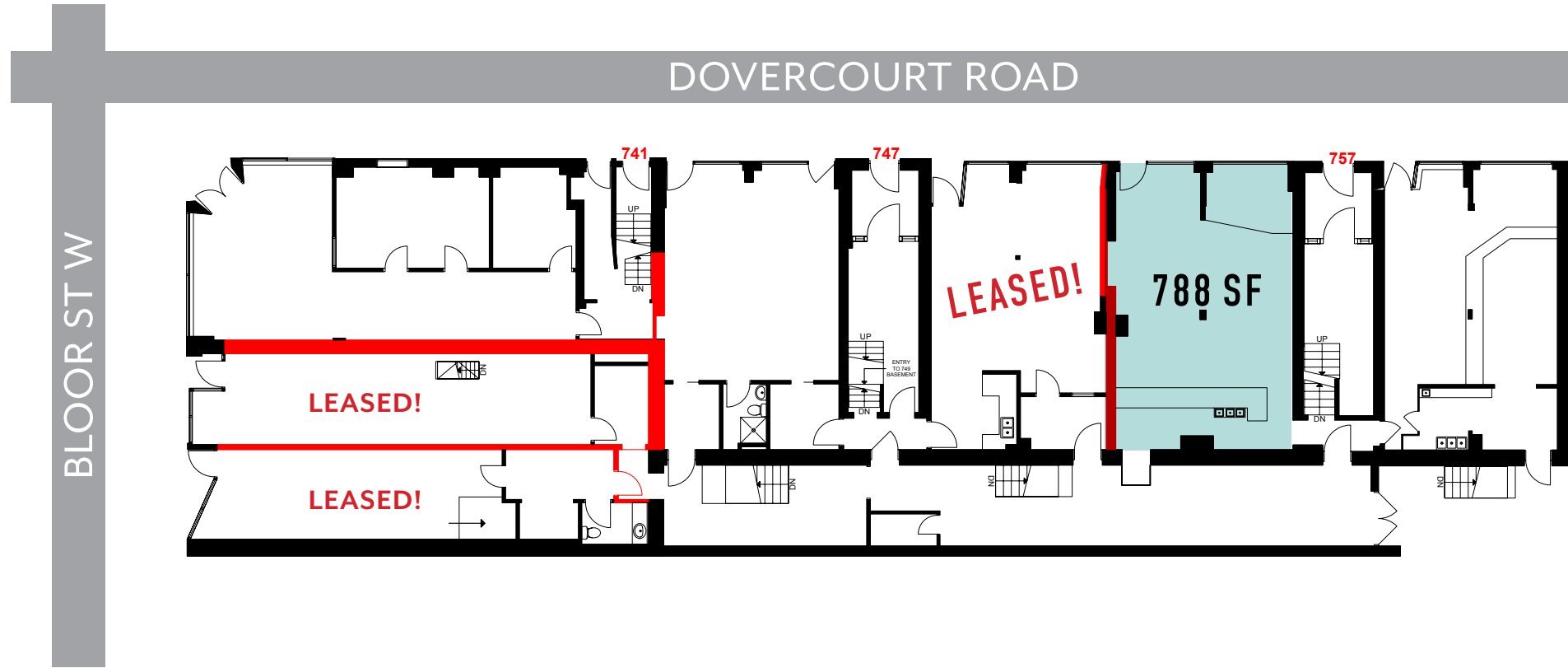
EXPENDITURE PER HOUSEHOLD\*

\*WITHIN 1 KM OF THE PROPERTY

**755**  
DOVERCOURT



# FLOOR PLAN



This disclaimer shall apply to CBRE Limited, Real Estate Brokerage, and to all other divisions of the Corporation; to include all employees and independent contractors ("CBRE"). The information set out herein, including, without limitation, any projections, images, opinions, assumptions and estimates obtained from third parties (the "Information") has not been verified by CBRE, and CBRE does not represent, warrant or guarantee the accuracy, correctness and completeness of the Information. CBRE does not accept or assume any responsibility or liability, direct or consequential, for the Information or the recipient's reliance upon the Information. The recipient of the Information should take such steps as the recipient may deem necessary to verify the Information prior to placing any reliance upon the Information. The Information may change and any property described in the Information may be withdrawn from the market at any time without notice or obligation to the recipient from CBRE. CBRE and the CBRE logo are the service marks of CBRE Limited and/or its affiliated or related companies in other countries. All other marks displayed on this document are the property of their respective owners. All Rights Reserved.

# BLOORCOURT VILLAGE NEIGHBOURING TENANTS



# CONTACT

**ARLIN MARKOWITZ\***  
Executive Vice President  
416 815 2374  
[arlin.markowitz@cbre.com](mailto:arlin.markowitz@cbre.com)

**ALEX EDMISON\***  
Senior Vice President  
416 874 7266  
[alex.edmison@cbre.com](mailto:alex.edmison@cbre.com)

**JACKSON TURNER\*\***  
Vice President  
416 815 2394  
[jackson.turner@cbre.com](mailto:jackson.turner@cbre.com)

**TEDDY TAGGART\***  
Senior Sales Associate  
416 847 3254  
[teddy.taggart@cbre.com](mailto:teddy.taggart@cbre.com)

\*Sales Representative, \*\*Broker

**755**  
DOVERCOURT

Taras H. Shevchenko  
Museum and Memorial

**OSSINGTON**  
SUBWAY ENTRANCE



**6.0 M**

POPULATION IN THE GREATER TORONTO AREA

**4<sup>TH</sup> LARGEST CITY IN NORTH AMERICA**  
**"BEST PLACE TO LIVE"**

THE ECONOMIST (2015)