

SECOND FLOOR
FOR LEASE



735 QUEEN
STREET WEST

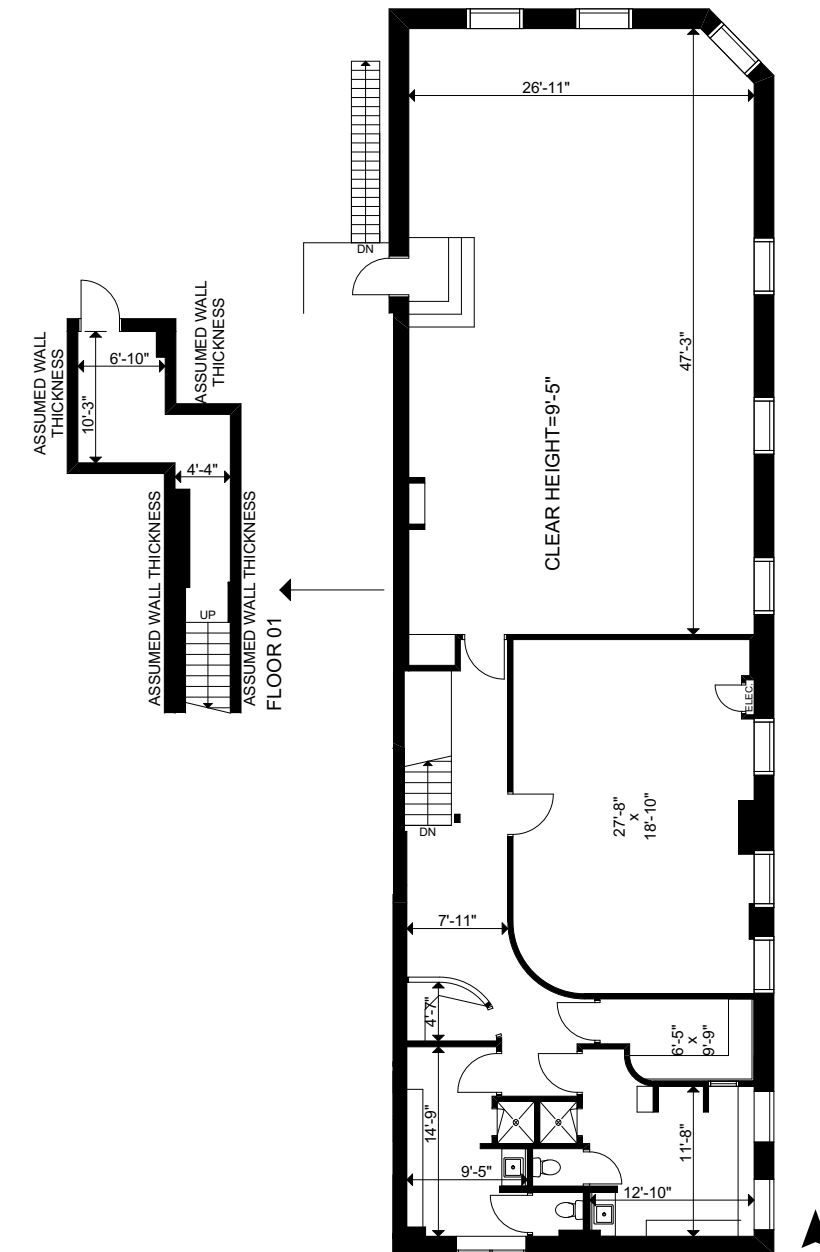
PRIME SECOND FLOOR AT QUEEN & TECUMSETH



735 QUEEN STREET WEST

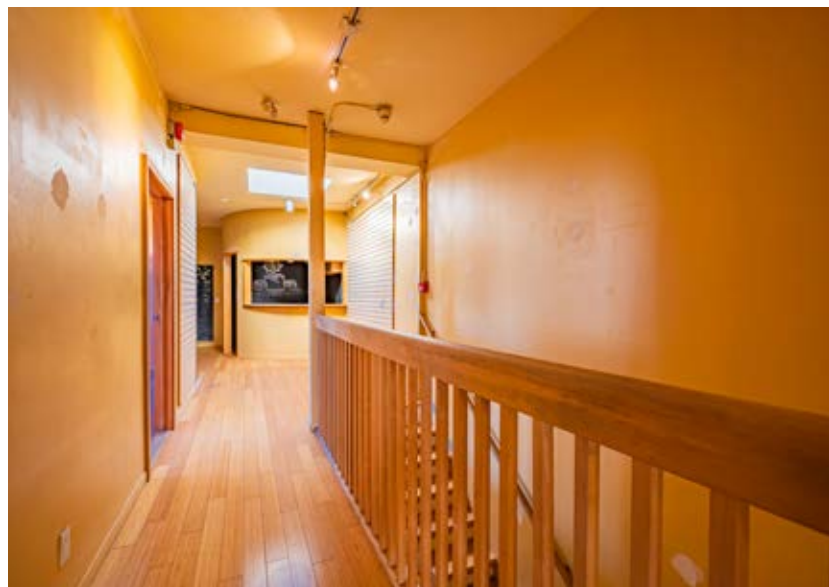
Size:	3,096 sq. ft.
Net Rent:	Please call listing agents
TMI:	\$16.50 per sq. ft.
Available:	Immediate

- Exceptional visibility at the corner of Queen and Tecumseth along the prime stretch of Queen Street West
- High pedestrian foot traffic, steps to Trinity Bellwoods Park
- Neighbouring tenants include Warby Parker, Oak + Fort, Anthropologie, Frank & Oak, Terroni, Cumbrae's, & many more

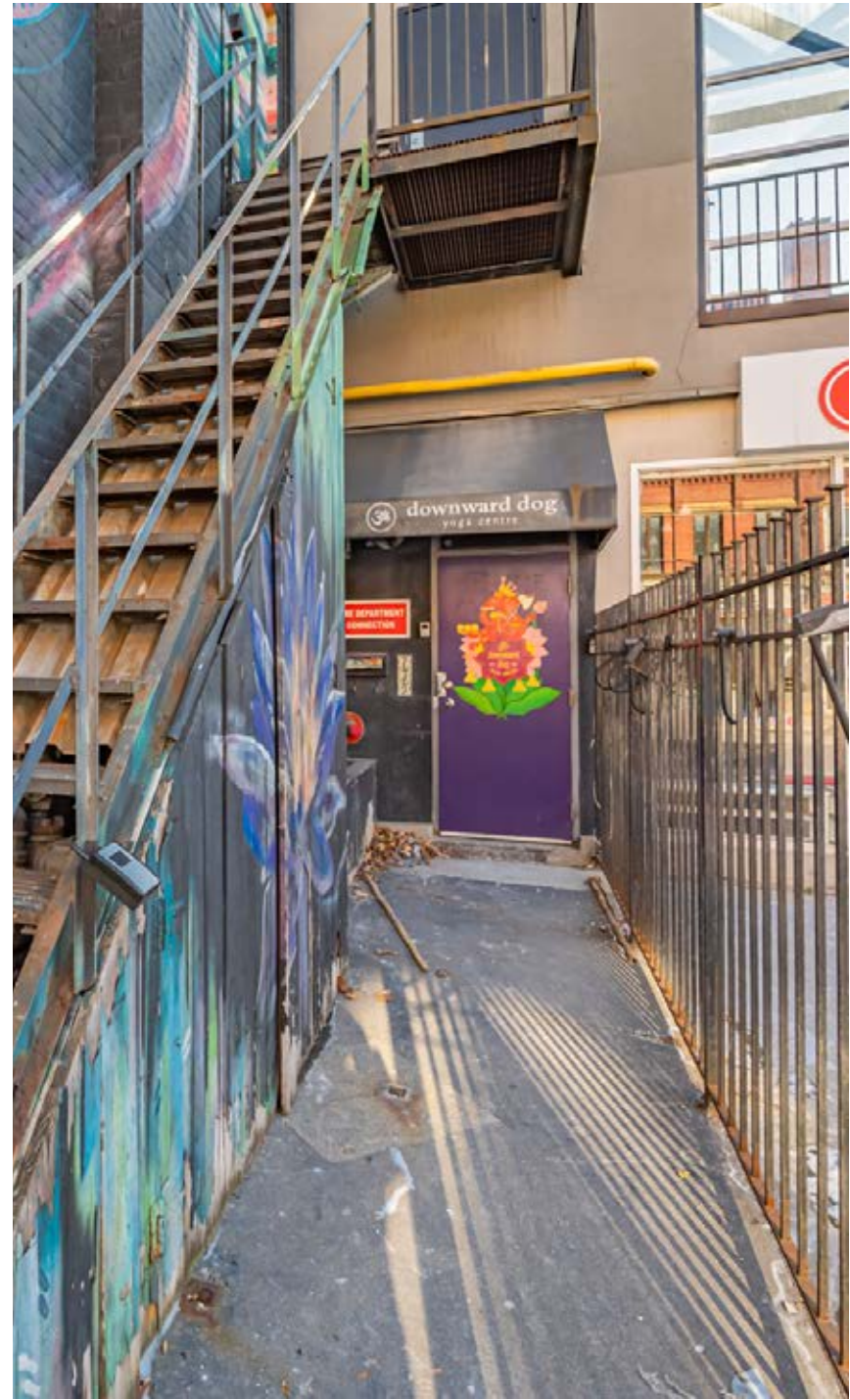
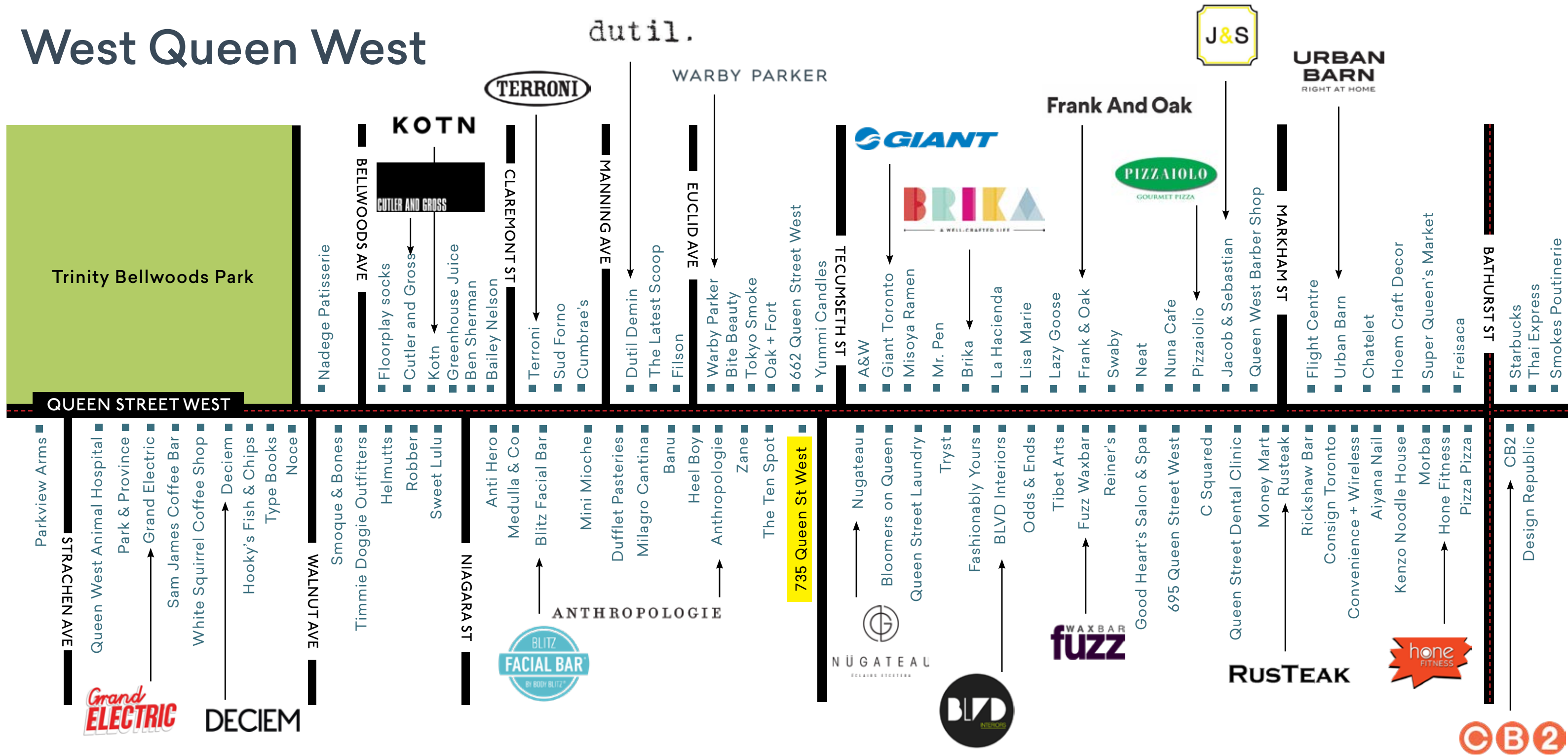




CBRE



West Queen West





LISTING AGENTS

ARLIN MARKOWITZ*

Senior Vice President

416 815 2374

arlin.markowitz@cbre.com

ALEX EDMISON*

Senior Vice President

416 874 7266

alex.edmison@cbre.com

JACKSON TURNER**

Vice President

416 815 2394

jackson.turner@cbre.com

TEDDY TAGGART*

Senior Sales Associate

416 847 3254

teddy.taggart@cbre.com

SELINA TAO*

Sales Representative

416 815 2396

selina.tao@cbre.com

*Sales Representative

**Broker

CBRE

This disclaimer shall apply to CBRE Limited, Real Estate Brokerage, and to all other divisions of the Corporation; to include all employees and independent contractors ("CBRE"). The information set out herein, including, without limitation, any projections, images, opinions, assumptions and estimates obtained from third parties (the "Information") has not been verified by CBRE, and CBRE does not represent, warrant or guarantee the accuracy, correctness and completeness of the Information. CBRE does not accept or assume any responsibility or liability, direct or consequential, for the Information or the recipient's reliance upon the Information. The recipient of the Information should take such steps as the recipient may deem necessary to verify the Information prior to placing any reliance upon the Information. The Information may change and any property described in the Information may be withdrawn from the market at any time without notice or obligation to the recipient from CBRE. CBRE and the CBRE logo are the service marks of CBRE Limited and/or its affiliated or related companies in other countries. All other marks displayed on this document are the property of their respective owners. All Rights Reserved.