

1733

BLOOR STREET WEST



AT THE CORNER OF BLOOR STREET WEST & KEELE
ACROSS FROM HIGH PARK

CBRE

1733 BLOOR STREET WEST



1733 BLOOR STREET WEST FOR LEASE

Size:	Ground: 1,181 sq. ft. Lower Level: 1,247 sq. ft.
Net Rent:	\$4,850/month
TMI:	\$1,150/month
Available:	Immediately

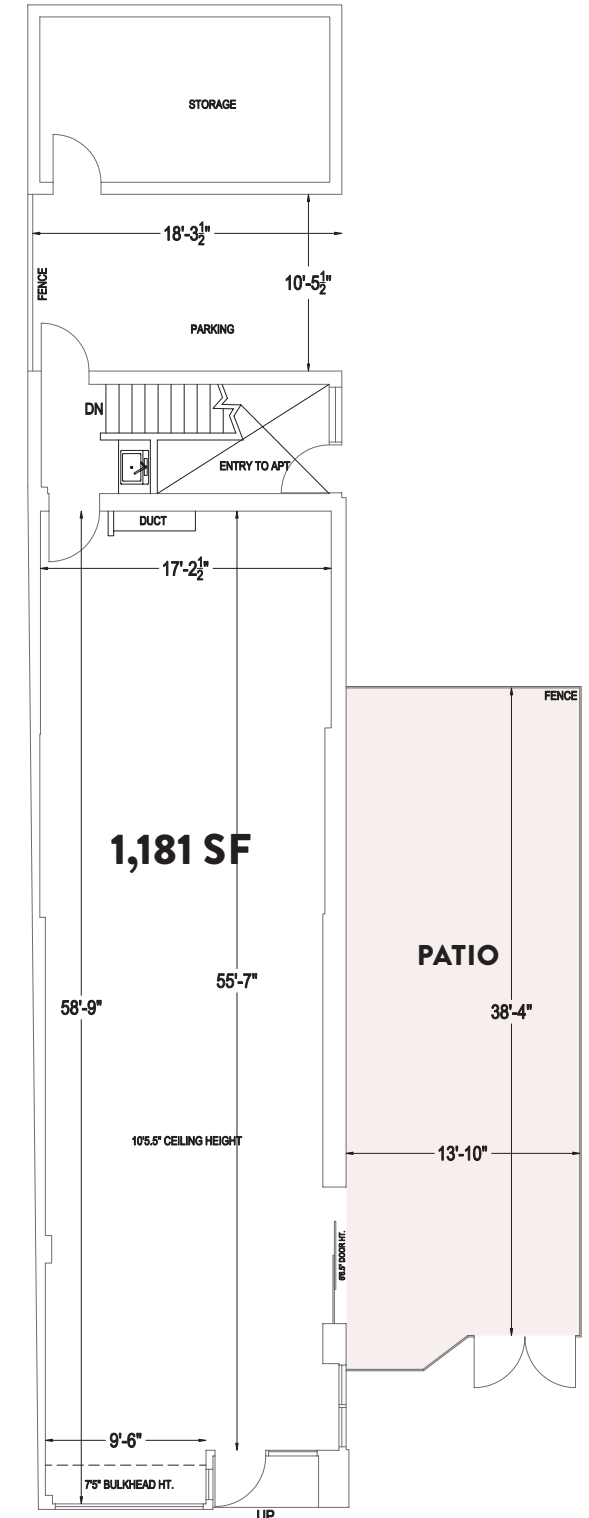
- Amazing corner opportunity at Bloor Street West & Keele Street, across the street from High Park
- 548 sq. ft. patio opportunity
- Includes 2 parking spaces
- 75 metres from Keele subway station

1733 BLOOR STREET WEST FLOOR PLANS

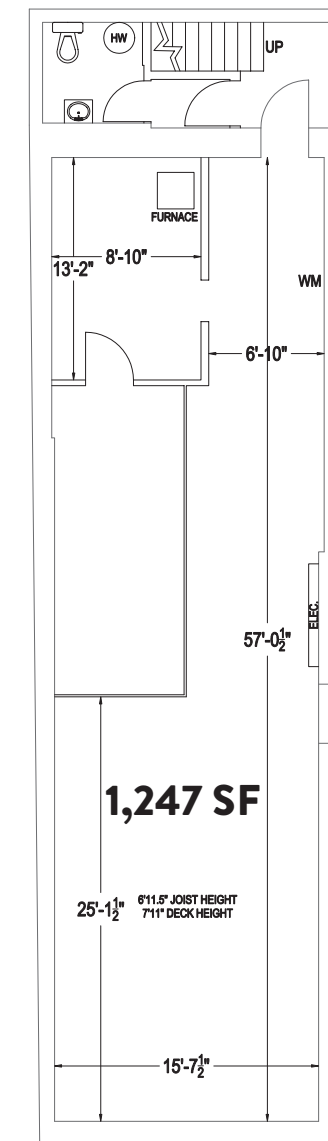


CBRE

GROUND FLOOR



LOWER LEVEL



1,181 SF

1,247 SF

BLOOR STREET WEST

KEELE STREET

1733 BLOOR STREET WEST

Located at the busy intersection of Keele and Bloor Street West where High Park meets Roncesvalles.

1733 Bloor Street West benefits from its proximity to High Park, one of Toronto's most popular parks and second largest in the city. It is home to large gardens, the High Park Zoo, playgrounds, High Park Nature Centre, as well as a number of cherry trees which attract thousands of visitors to the park every year from late April to early May when they are in full bloom.

Not only is 1733 Bloor Street West located across the street from Keele subway station, it is also in close proximity to the Bloor GO & UP Express station. The station is a quick 10 minute walk away and provides users access to the GO Network, UP Express and the TTC subway system. People can reach Union Station in 12 minutes and Pearson Airport in 17 minutes.

NEIGHBOURING TENANTS

LCBO

Loblaws



Likely General



The Mashot Tavern



Mabel's





ADVISORY TEAM

Arlin Markowitz*
Senior Vice President
416 815 2374
arlin.markowitz@cbre.com

Alex Edmison*
Vice President
416 874 7266
alex.edmison@cbre.com

Jackson Turner**
Vice President
416 815 2394
jackson.turner@cbre.com

Teddy Taggart*
Sales Associate
416 847 3254
teddy.taggart@cbre.com

Alex Protomanni*
Sales Associate
416 495 6284
alex.protomanni@cbre.com

*Sales Representative **Broker

CBRE

This disclaimer shall apply to CBRE Limited, Real Estate Brokerage, and to all other divisions of the Corporation; to include all employees and independent contractors ("CBRE"). The information set out herein, including, without limitation, any projections, images, opinions, assumptions and estimates obtained from third parties (the "Information") has not been verified by CBRE, and CBRE does not represent, warrant or guarantee the accuracy, correctness and completeness of the Information. CBRE does not accept or assume any responsibility or liability, direct or consequential, for the Information or the recipient's reliance upon the Information. The recipient of the Information should take such steps as the recipient may deem necessary to verify the Information prior to placing any reliance upon the Information. The Information may change and any property described in the Information may be withdrawn from the market at any time without notice or obligation to the recipient from CBRE. CBRE and the CBRE logo are the service marks of CBRE Limited and/or its affiliated or related companies in other countries. All other marks displayed on this document are the property of their respective owners. All Rights Reserved.