



# 410 ADELAIDE

RETAIL FOR LEASE IN THE  
HEART OF DOWNTOWN TORONTO





# 410 ADELAIDE

Address: 410 Adelaide Street West, Toronto

Size: Unit 4: 1,717 sq. ft.  
Unit 5: 1,593 sq. ft.

Net Rent: \$35.00 per sq. ft.

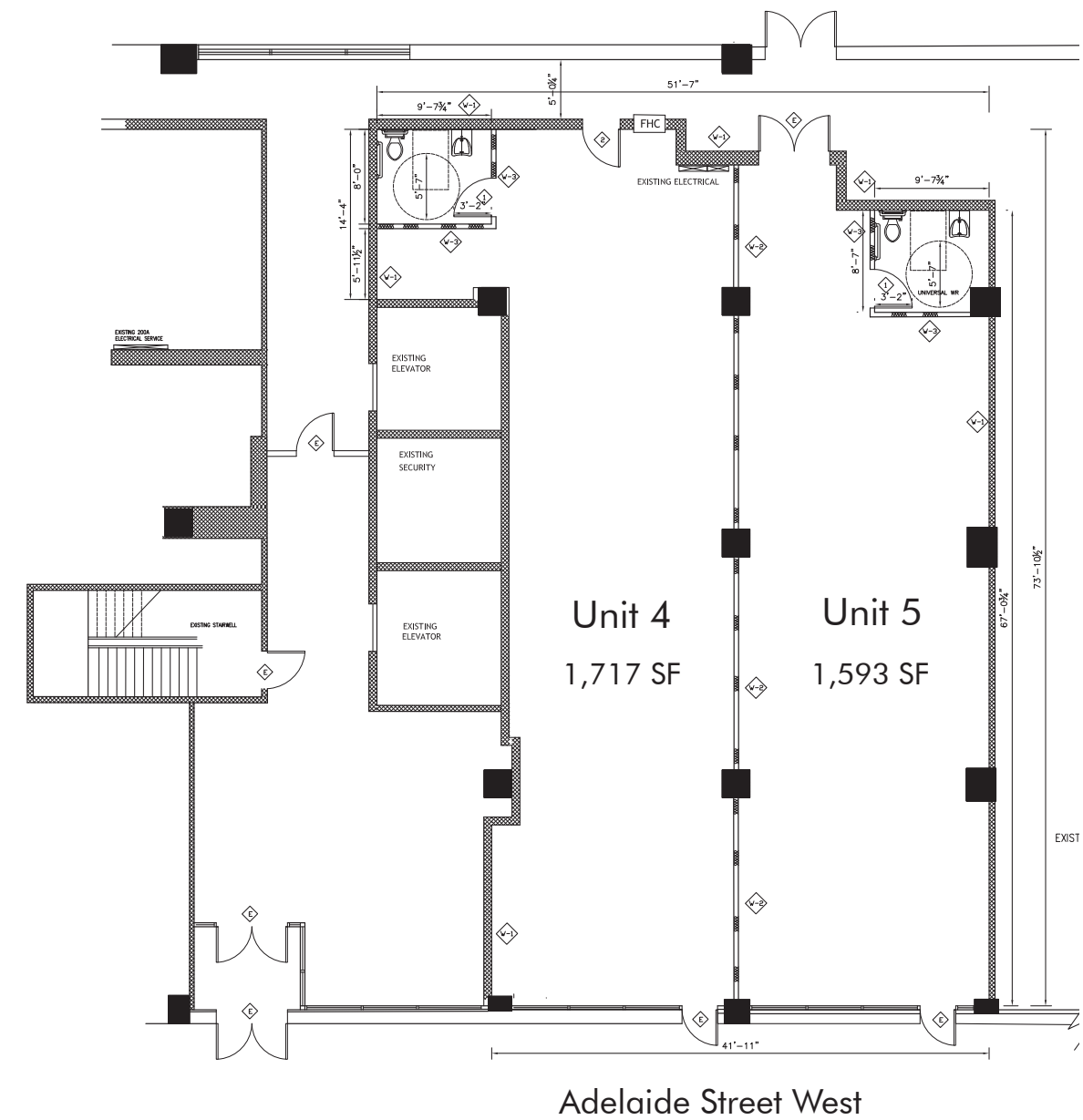
TMI: \$14.05 per sq. ft.

Available: Immediately

- Excellent frontage on Adelaide Street West
- Bright and open space with floor to ceiling windows
- Located in the heart of Downtown Toronto, steps from Spadina Avenue and the best stretch of King West
- Neighbouring retailers include Stretchlab, Telus Health MyPet, Black-Eyed Susans, Impact Kitchen, barre3, Ace Hotel and Hoame



# FLOOR PLAN



INTERIOR IMAGES



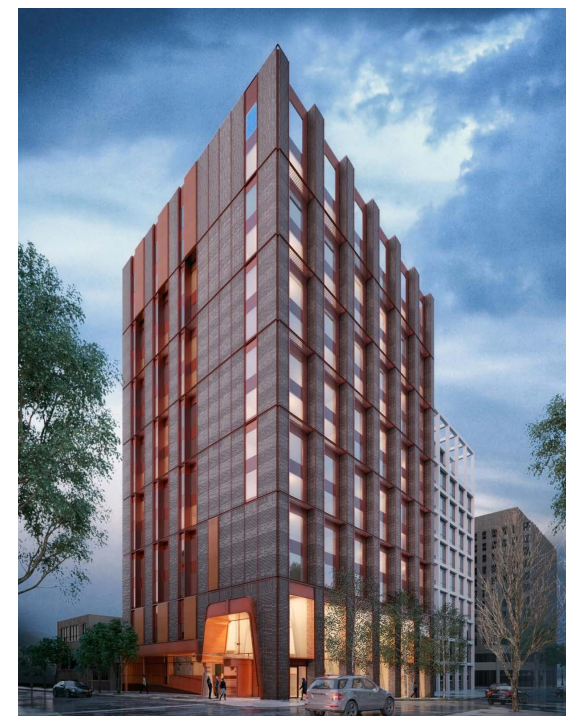
CBRE





# THE LOCATION

410 Adelaide Street West is located in Downtown West, just steps off the busy intersection of Spadina and Adelaide and a stones throw away from the heart of the Entertainment District. 410 Adelaide benefits from very high vehicular traffic and its proximity to a large number of condominium developments currently under construction or recently complete, most notably the Waterworks Redevelopment, KING Toronto, and The Well.



CBRE



# CONTACT

Arlin Markowitz\*  
Executive Vice President  
416 815 2374  
arlin.markowitz@cbre.com

Alex Edmison\*  
Senior Vice President  
416 874 7266  
alex.edmison@cbre.com

Jackson Turner\*\*  
Senior Vice President  
416 815 2394  
jackson.turner@cbre.com

Teddy Taggart\*  
Vice President  
416 847 3254  
teddy.taggart@cbre.com

Emily Everett  
Sales Representative  
647 943 4185  
emily.everett@cbre.com

\*Sales Representative  
\*\*Broker

This disclaimer shall apply to CBRE Limited, and to all divisions of the Corporation ("CBRE"). The information set out herein (the "Information") has not been verified by CBRE, and CBRE does not represent, warrant or guarantee the accuracy, correctness and completeness of the Information. CBRE does not accept or assume any responsibility or liability, direct or consequential, for the Information or the recipient's reliance upon the Information. The recipient of the Information should take such steps as the recipient may deem necessary to verify the Information prior to placing any reliance upon the Information. The Information may change and any property described in the Information may be withdrawn from the market at any time without notice or obligation to the recipient from CBRE.

