



410 ADELAIDE

RETAIL FOR LEASE IN THE
HEART OF DOWNTOWN TORONTO



410 ADELAIDE

Address: 410 Adelaide Street West, Toronto

Size: Unit 4: 1,848 sq. ft.
Unit 5: 1,848 sq. ft.
Total: 3,696 sq. ft.

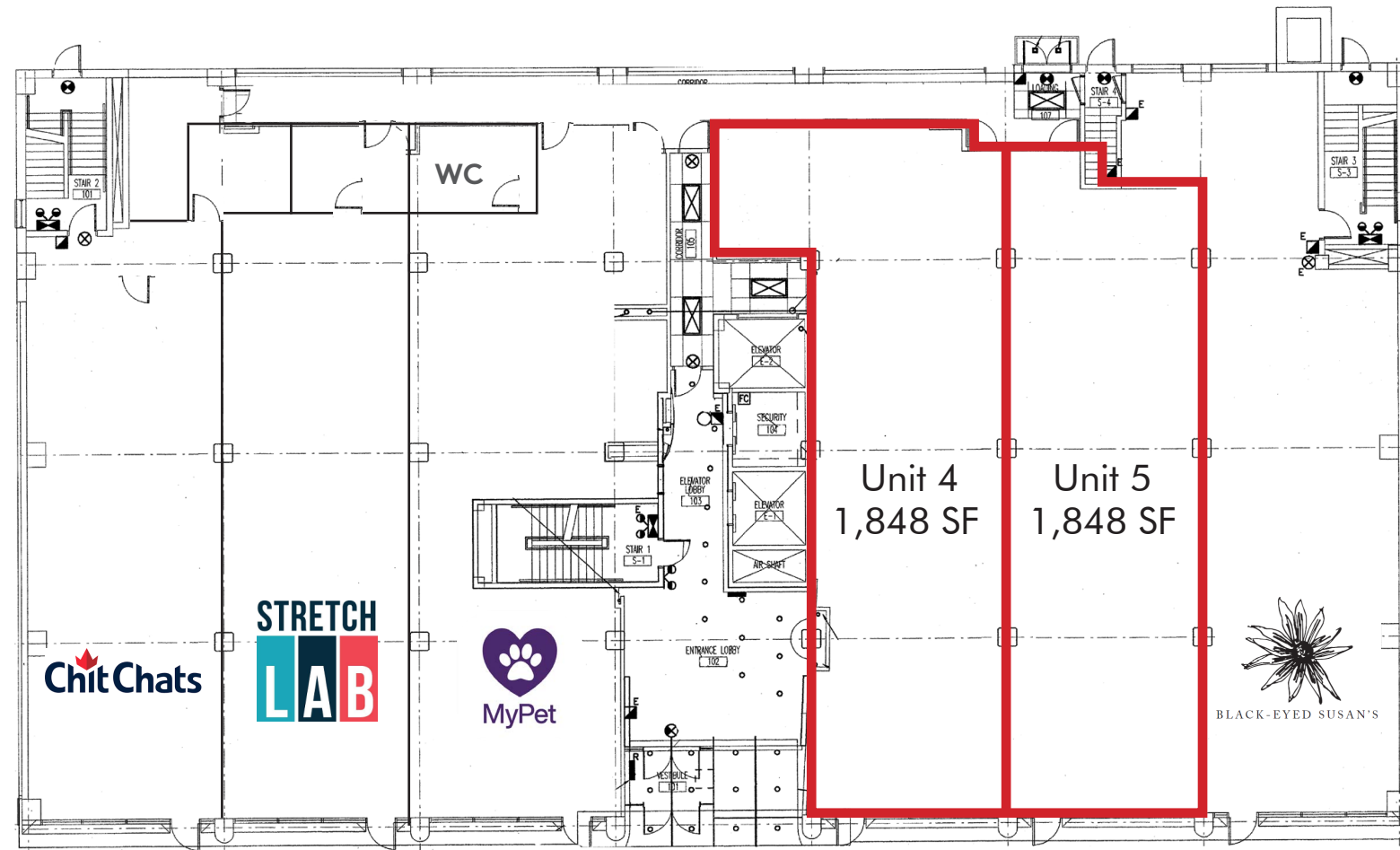
Net Rent: \$27.50 per sq. ft.

TMI: \$14.05 per sq. ft.

Available: Immediately

- Excellent frontage on Adelaide Street West
- Bright and open space with floor to ceiling windows
- Located in the heart of Downtown Toronto, steps from Spadina Avenue and the best stretch of King West
- Neighbouring retailers include Stretchlab, Telus Health MyPet, Black-Eyed Susans, Impact Kitchen, barre3, Ace Hotel and Hoame

FLOOR PLAN



Adelaide Street West



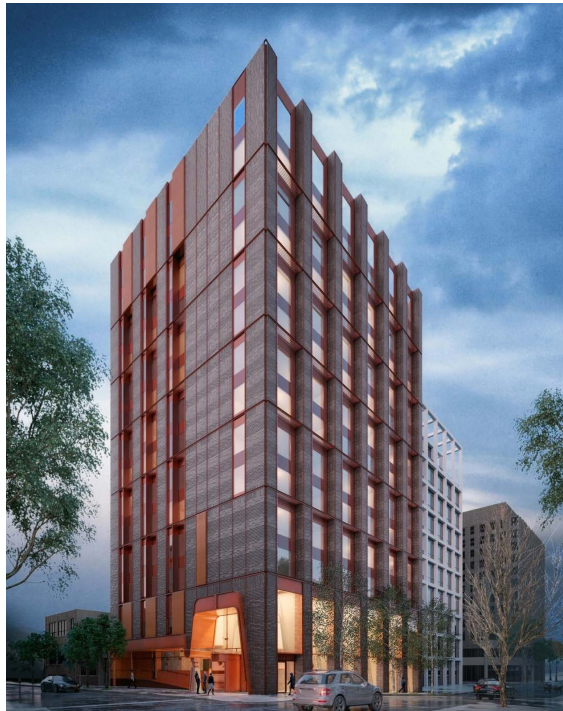
CBRE

INTERIOR IMAGES



THE LOCATION

410 Adelaide Street West is located in Downtown West, just steps off the busy intersection of Spadina and Adelaide and a stones throw away from the heart of the Entertainment District. 410 Adelaide benefits from very high vehicular traffic and its proximity to a large number of condominium developments currently proposed/ under construction, most notably the Waterworks Redevelopment, KING Toronto, and The Well.



CONTACT

Arlin Markowitz*
Executive Vice President
416 815 2374
arlin.markowitz@cbre.com

Alex Edmison*
Senior Vice President
416 874 7266
alex.edmison@cbre.com

Jackson Turner**
Senior Vice President
416 815 2394
jackson.turner@cbre.com

Teddy Taggart*
Associate Vice President
416 847 3254
teddy.taggart@cbre.com

*Sales Representative

**Broker

This disclaimer shall apply to CBRE Limited, and to all divisions of the Corporation ("CBRE"). The information set out herein (the "Information") has not been verified by CBRE, and CBRE does not represent, warrant or guarantee the accuracy, correctness and completeness of the Information. CBRE does not accept or assume any responsibility or liability, direct or consequential, for the Information or the recipient's reliance upon the Information. The recipient of the Information should take such steps as the recipient may deem necessary to verify the Information prior to placing any reliance upon the Information. The Information may change and any property described in the Information may be withdrawn from the market at any time without notice or obligation to the recipient from CBRE.

