

# 1993 YONGE

BUILDING FOR SALE | MIDTOWN TORONTO



# 1993 YONGE

BUILDING FOR SALE

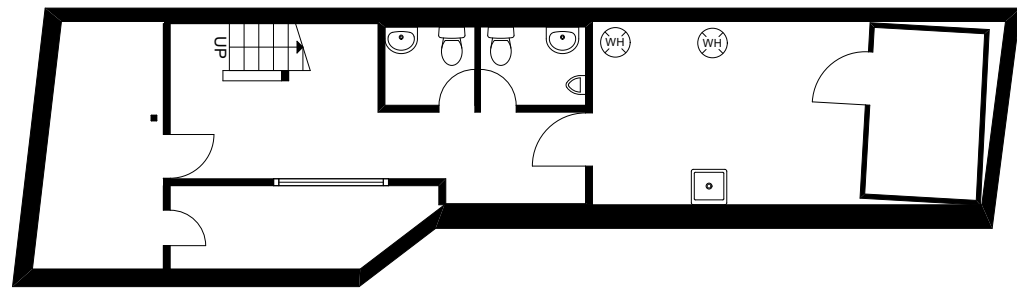
Total Size: 2,260 sq. ft.  
Property Taxes: \$33,612.16 (2020)  
Price: \$2,249,000

- Ideally situated in Davisville neighbourhood in Midtown Toronto, steps from Davisville subway station
- 2-storey freestanding property with potential development upside
- Building can be vacant upon closing
- Parking space in the rear
- Perfect for investors or users and suitable for both retail/office

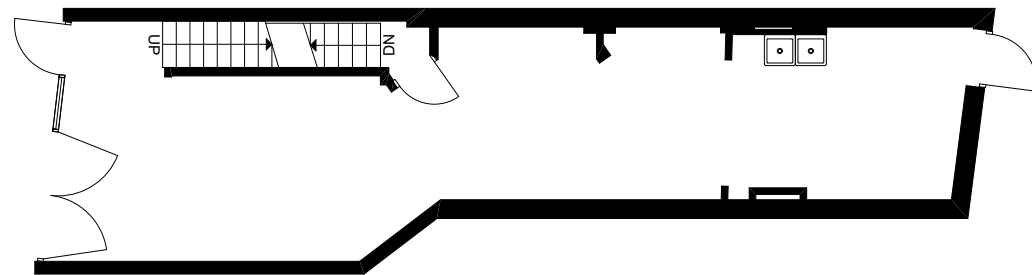


# FLOOR PLANS

**BASEMENT** | 754 SQ. FT.

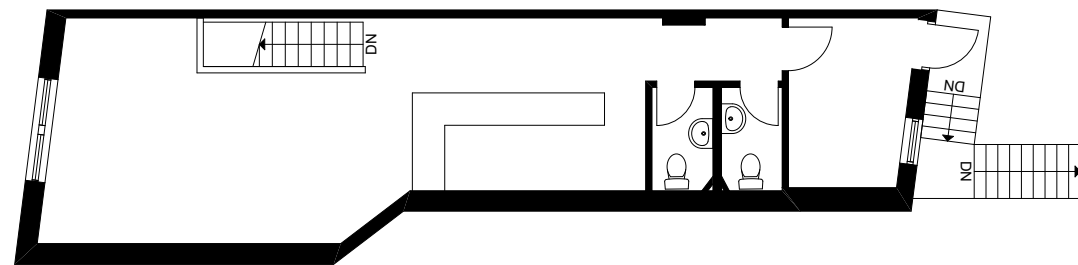


**GROUND** | 752 SQ. FT.



YONGE STREET

**SECOND** | 754 SQ. FT.

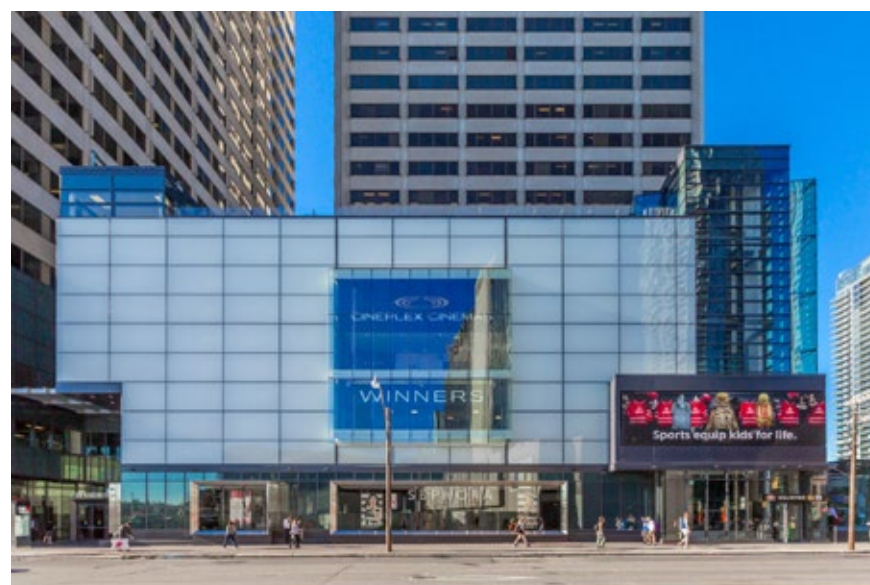


# Midtown TORONTO

1993 Yonge Street is located in Midtown Toronto, nestled between two popular and distinct neighbourhoods– Davisville and Yonge and Eglinton.

Davisville is a popular neighborhood for families with its tree-lined streets, single family homes, independent shops and restaurants and numerous neighbourhood parks. The neighbourhood is well connected, serviced by Yonge-University subway line and a variety of bus routes. Union Station is only 15 minutes away by subway and access to the Bloor-Danforth subway line and Bloor-Yorkville is only a 5 minute ride away.

Yonge and Eglinton, playfully nicknamed “Yonge & Eligible” is a popular neighbourhood for young professionals. The neighbourhood is home to plenty of restaurants, bars, boutiques and national retailers including Sephora, West Elm, Urban Outfitters, Farm Boy, The Keg and Indigo. Yonge and Eglinton is one of Toronto’s fastest growing nodes, triggered in part by the Eglinton Crosstown, a light rail line currently under construction along Eglinton Avenue.



<b>YONGE EGLINTON CENTRE</b> SEPHORA AROMA URBAN OUTFITTERS WINNERS REXALL CINEPLEX METRO SUPERMARKET	PAI UPTOWN CHIPOTLE
	<b>ROEHAMPTON AVENUE</b> KUPFERT & KIM SOFT MOC BMV TD BANK BURGERS PRIEST SALUS MCDONALD'S KINTON RAMEN FRESH
	<b>EGLINTON AVENUE EAST</b> BMO SCOTIABANK ROGERS MANDARIN CANADA SQUARE CANADIAN TIRE HEAD OFFICES CIBC TIM HORTONS CONDO DEVELOPMENT THE KEG STEAKHOUSE STARBUCKS PI CO TD BANK SNAKES & LATTES BUCA LOBLAWS ORANGE THEORY FITNESS
<b>BERWICK AVE</b> UNTITLED CONDOS	<b>SOUDAN AVENUE</b> SCOTIABANK FARM BOY WEST ELM
<b>HILLSDALE AVENUE W</b> UOVO BOUTIQUE CONDOS CYCLEPATH MAA VARIETY	<b>HILLSDALE AVENUE E</b> CLANDESTINA THE HONEY POT KITCHEN STUFF PLUS ZEZAFOUN
PEPPERMILLS POOR LITTLE RICH GIRL MARIACHI'S PUNTO GELATO	<b>MANOR ROAD EAST</b> POTATOE SKINS SKIIS AND BIKES THE BUTCHER'S SON AU LIT FINE LINENS LITTLE SISTER INDONESIAN FOOD GLOBAL PET FOODS
<b>LOLA ROAD</b> ST. LOUIS BAR & GRILL SUTHERLAND-CHAN CLINIC SAGE REAL ESTATE	<b>GLEBE ROAD E</b> ISAAN DER TABULE RACHEL'S COFFEE HOUSE NACY MANI PEDI SPA KHUA GULLY ROGERS
<b>GLEBE ROAD W</b> STRUCTUBE BDO REMIT 200 0 YONGE DENTAL PIZZA SHAB	<b>BELSIZE DRIVE</b> J DAVIS HOUSE LCBO PIZZA PIZZA KRAMER'S
<b>IMPERIAL STREET</b> TD THE WALLACE GASTROPUB WINE RACK SUBWAY TIM HORTONS	<b>DAVISVILLE AVENUE</b> WISE MART GAURDIAN PHARMACY SECOND CUP MR. SUB/ THAI EXPRESS
<b>CHAPLIN CRESCENT</b> DAVISVILLE STATION TORONTO TRANSIT COMMISSION HEAD OFFICE	<b>BALLIOL STREET</b> SOTHERBY'S FIONN MACCOOL'S THE BULL: A FIRKIN PUB ETHAN ALLEN



# Midtown TORONTO

MT PLEASANT RD

1993  
YONGE

Yonge Subway Line

 ST. CLAIR STATION

 DAVISVILLE STATION

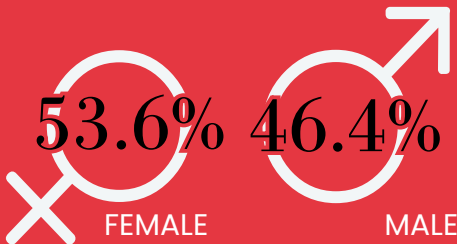
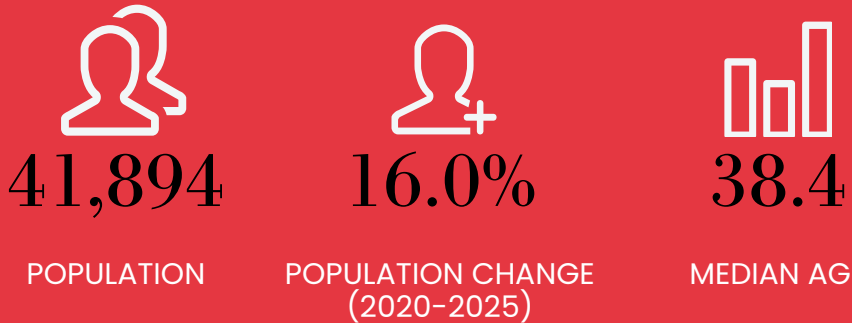
Future Eglinton Crosstown

 EGLINTON  
SUBWAY STATION

YONGE STREET

# Demographic Snapshot

1 KM RADIUS

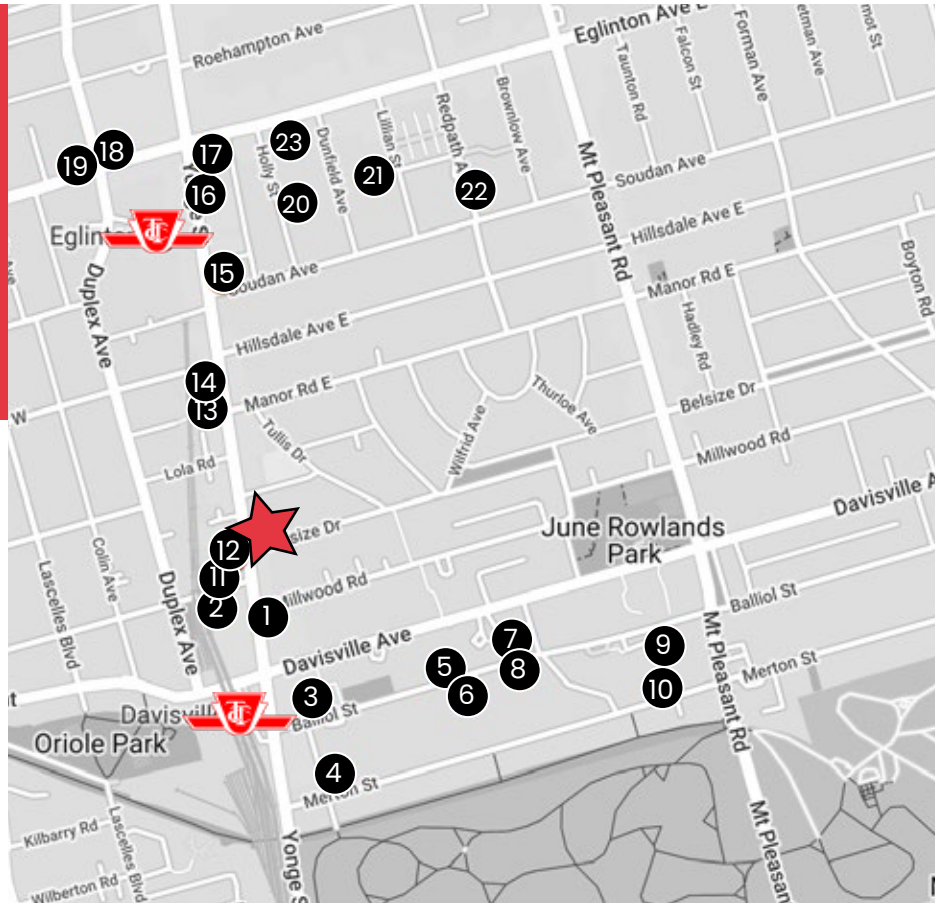


# Area Developments

8,531 NEW UNITS

- 1. **The Millwood**  
Pre-Construction  
Storeys: 45, 30  
Units: 821
- 2. **25 Imperial**  
Pre-Construction  
Storeys: 14  
Units: 144
- 3. **22 Balliol**  
Pre-Construction  
Storeys: 38  
Units: 425
- 4. **30 Merton St**  
Pre-Construction  
Storeys: 37  
Units: 334
- 5. **Balliol Park**  
Pre-Construction  
Storeys: 30,14  
Units: 522
- 6. **155 Balliol**  
Pre-Construction  
Storeys: 38  
Units: 555

- 7. **141 Balliol**  
Pre-Construction  
Storeys: 16  
Units: 143
- 8. **185 Balliol**  
Pre-Construction  
Storeys: 35  
Units: 447



9. **265 Balliol**  
Pre-Construction  
Storeys: 27  
Units: 223

10. **276-290 Merton**  
Pre-Construction  
Storeys: 16  
Units: 100

11. **24 Imperial**  
Pre-Construction  
Storeys: 9  
Units: 30

12. **1984 Yonge St**  
Pre-Construction  
Storeys: 9  
Units: 30

13. **The Davisville**  
Pre-Construction  
Storeys: 12  
Units: 86

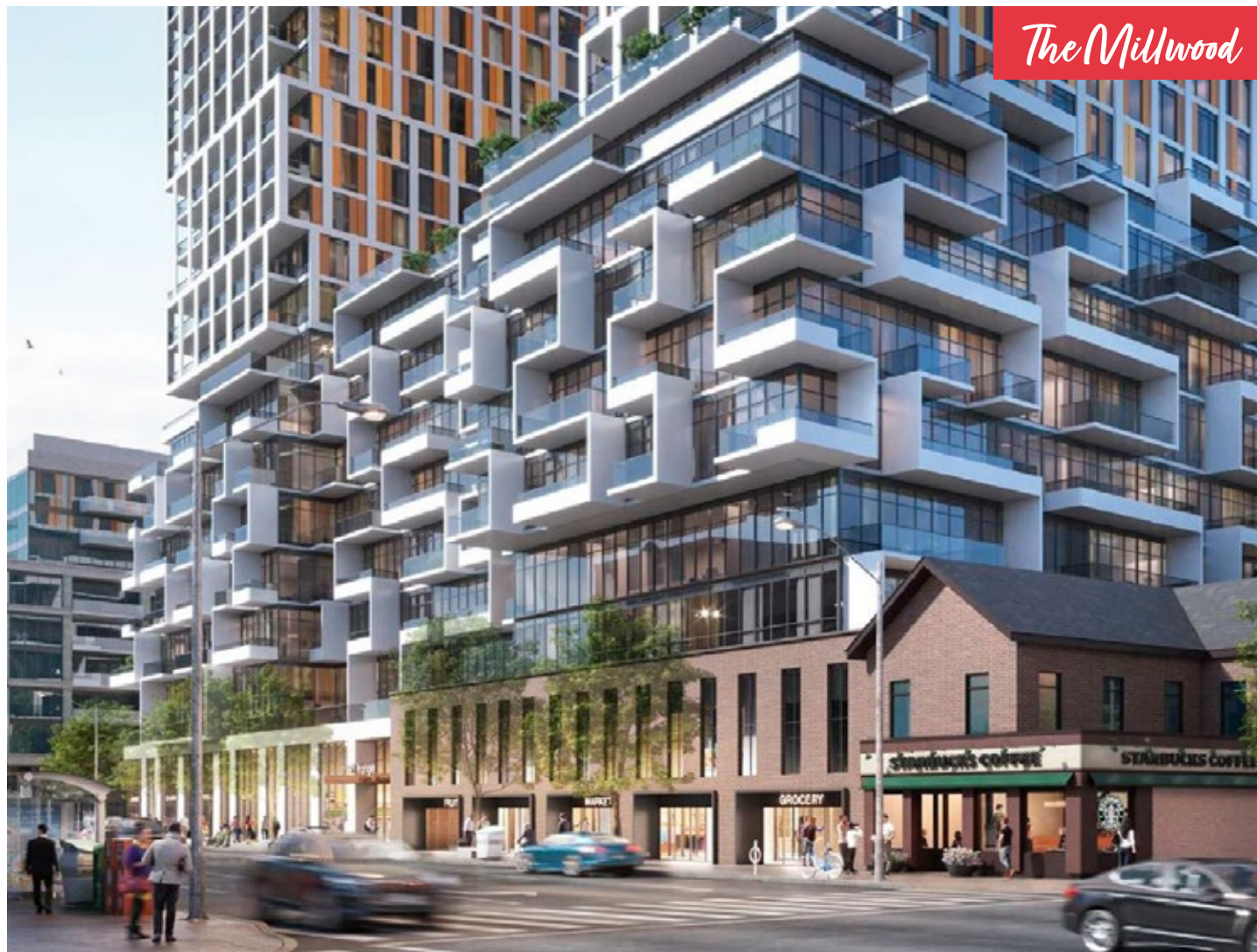
14. **Uovo Boutique**  
Construction  
Storeys: 11  
Units: 67

15. **Y&S Condos**  
Construction  
Storeys: 35  
Units: 307

16. **2221 Yonge**  
Construction  
Storeys: 58  
Units: 566



*Y&S Condos*



*The Millwood*

17. **1 Eglinton East**  
Pre-Construction  
Storeys: 65  
Units: 660

18. **36 Eglinton W**  
Pre-Construction  
Storeys: 65  
Units: 663

19. **50 Eglinton W**  
Pre-Construction  
Storeys: 34, 39  
Units: 688

20. **Plaza Midtown**  
Construction  
Storeys: 33, 27  
Units: 545

21. **Lillian Park**  
Construction  
Storeys: 38, 26  
Units: 544

22. **71 Redpath Ave**  
Construction  
Storeys: 21  
Units: 180

23. **55 Eglinton East**  
Construction  
Storeys: 50  
Units: 461



*Uovo Boutique*





# Advisory Team

Arlin Markowitz\*  
Executive Vice President  
416 815 2374  
arlin.markowitz@cbre.com

Alex Edmison\*  
Senior Vice President  
416 874 7266  
alex.edmison@cbre.com

Jackson Turner\*\*  
Vice President  
416 815 2394  
jackson.turner@cbre.com

Teddy Taggart\*  
Senior Sales Associate  
416 847 3254  
teddy.taggart@cbre.com

Emily Everett  
Sales Representative  
647 943 4185  
emily.everett@cbre.com

\*Sales Representative

\*\*Broker

Website at [www.urbanretailtoronto.com](http://www.urbanretailtoronto.com)

Instagram: [@urbanretailteamto](https://www.instagram.com/urbanretailteamto)

**CBRE**

This disclaimer shall apply to CBRE Limited, Real Estate Brokerage, and to all other divisions of the Corporation; to include all employees and independent contractors ("CBRE"). The information set out herein, including, without limitation, any projections, images, opinions, assumptions and estimates obtained from third parties (the "Information") has not been verified by CBRE, and CBRE does not represent, warrant or guarantee the accuracy, correctness and completeness of the Information. CBRE does not accept or assume any responsibility or liability, direct or consequential, for the Information or the recipient's reliance upon the Information. The recipient of the Information should take such steps as the recipient may deem necessary to verify the Information prior to placing any reliance upon the Information. The Information may change and any property described in the Information may be withdrawn from the market at any time without notice or obligation to the recipient from CBRE. CBRE and the CBRE logo are the service marks of CBRE Limited and/or its affiliated or related companies in other countries. All other marks displayed on this document are the property of their respective owners. All Rights Reserved.