

1993 YONGE

BUILDING FOR SALE | MIDTOWN TORONTO



CBRE

1993 YONGE

BUILDING FOR SALE

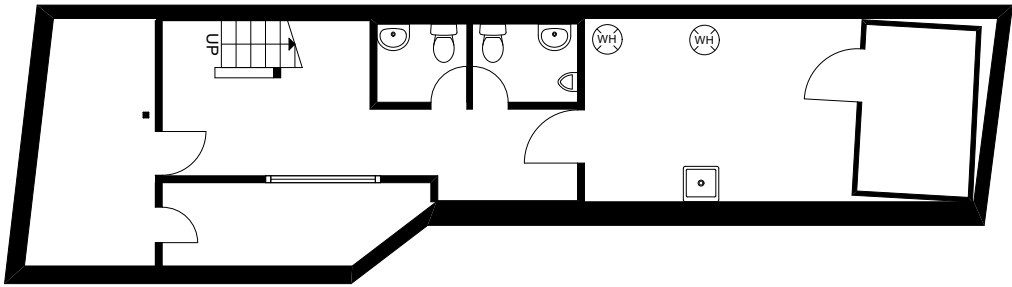
Total Size: 2,260 sq. ft.
Property Taxes: \$33,612.16 (2020)
Price: \$2,249,000

- Ideally situated in Davisville neighbourhood in Midtown Toronto, steps from Davisville subway station
- 2-storey freestanding property with potential development upside
- Building can be vacant upon closing
- Parking space in the rear
- Perfect for investors or users and suitable for both retail/office



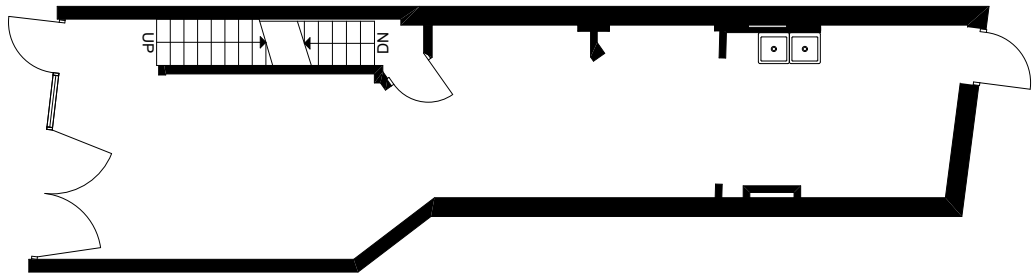
FLOOR PLANS

BASEMENT | 754 SQ. FT.

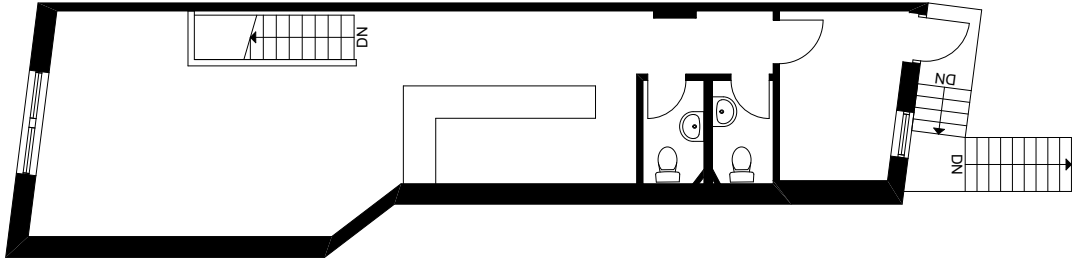


GROUND | 752 SQ. FT.

YONGE STREET



SECOND | 754 SQ. FT.



Midtown TORONTO

1993 Yonge Street is located in Midtown Toronto, nestled between two popular and distinct neighbourhoods– Davisville and Yonge and Eglinton.

Davisville is a popular neighborhood for families with it's tree-lined streets, single family homes, independent shops and restaurants and numerous neighbourhood parks. The neighbourhood is well connected, serviced by Yonge-University subway line and a variety of bus routes. Union Station is only 15 minutes away by subway and access to the Bloor-Danforth subway line and Bloor-Yorkville is only a 5 minute ride away.

Yonge and Eglinton, playfully nicknamed “Yonge & Eligible” is a popular neighbourhood for young professionals. The neighbourhood is home to plenty of restaurants, bars, boutiques and national retailers including Sephora, West Elm, Urban Outfitters, Farm Boy, The Keg and Indigo. Yonge and Eglinton is one of Toronto’s fastest growing nodes, triggered in part by the Eglinton Crosstown, a light rail line currently under construction along Eglinton Avenue.



YONGE EGLINTON CENTRE

SEPHORA
AROMA
URBAN OUTFITTERS
WINNERS
REXALL
CINEPLEX
METRO SUPERMARKET

PAI UPTOWN
CHIPOTLE

ROEHAMPTON AVENUE

KUPFERT & KIM
SOFT MOC
BMV
BURGER'S
PRIEST
SALUS
MCDONALD'S
KINTON
RAMEN
FRESH

TD BANK

YONGE STREET

BMO
SCOTIABANK
ROGERS
MANDARIN
CANADA SQUARE
CANADIAN TIRE HEAD OFFICES

BERWICK AVE

UNTITLED CONDOS

HILLSDALE AVENUE W
UOVO BOUTIQUE CONDOS
CYCLEPATH
MAA VARIETY

PEPPERMILLS
POOR LITTLE RICH GIRL
MARIACHI'S
PUNTO GELATO

LOLA ROAD

ST. LOUIS BAR & GRILL
SUTHERLAND-CHAN CLINIC
SAGE REAL ESTATE

GLEBE ROAD W

STRUCTUBE
BDO REMIT
200 0 YONGE DENTAL
PIZZA SHAB

IMPERIAL STREET

TD
THE WALLACE GASTROPUB
WINE RACK
SUBWAY
TIM HORTONS

CHAPLIN CRESCENT

DAVISVILLE STATION

TORONTO
TRANSIT
COMMISSION
HEAD OFFICE

EGGLINTON AVENUE EAST

CIBC
TIM HORTONS
CONDO DEVELOPMENT
THE KEG STEAKHOUSE
STARBUCKS
PI CO
TD BANK

SOUDAN AVENUE

SCOTIABANK
FARM BOY
WEST ELM

HILLSDALE AVENUE E

CLANDESTINA
THE HONEY POT
KITCHEN STUFF PLUS
ZEZAFOUN

MANOR ROAD EAST

POTATOE SKINS
SKIIS AND BIKES
THE BUTCHER'S SON
AU LIT FINE LINENS
LITTLE SISTER INDONISIAN FOOD
GLOBAL PET FOODS

GLEBE ROAD E

ISAAN DER
TABULE
RACHEL'S COFFEE HOUSE
NACY MANI PEDI SPA
KHUA GULLY
ROGERS

BELSIZE DRIVE

J DAVIS HOUSE
LCBO
PIZZA PIZZA
KRAMER'S

DAVISVILLE AVENUE

WISE MART
GAURDIAN PHARMACY
SECOND CUP
MR. SUB/ THAI EXPRESS

BALLIOL STREET

SOTHERBY'S
FIONN MACCOOL'S
THE BULL: A FIRKIN PUB
ETHAN ALLEN

1993
YONGE

1993 YONGE STREET, TORONTO | FOR SALE

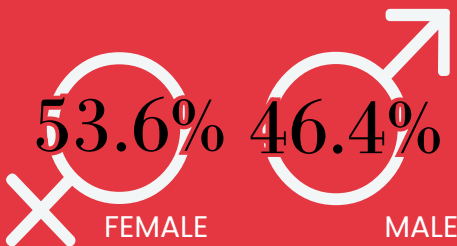
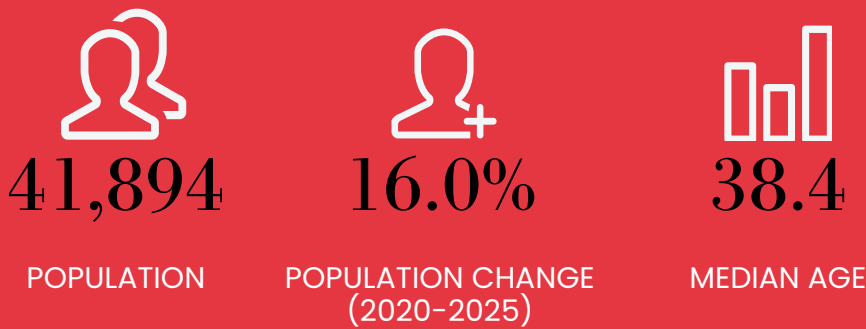
CBRE LIMITED

Midtown TORONTO



Demographic Snapshot

1 KM RADIUS



Area Developments

8,531 NEW UNITS

1. The Millwood

Pre-Construction
Storeys: 45, 30
Units: 821

2. 25 Imperial

Pre-Construction
Storeys: 14
Units: 144

3. 22 Balliol

Pre-Construction
Storeys: 38
Units: 425

4. 30 Merton St

Pre-Construction
Storeys: 37
Units: 334

5. Balliol Park

Pre-Construction
Storeys: 30, 14
Units: 522

6. 155 Balliol

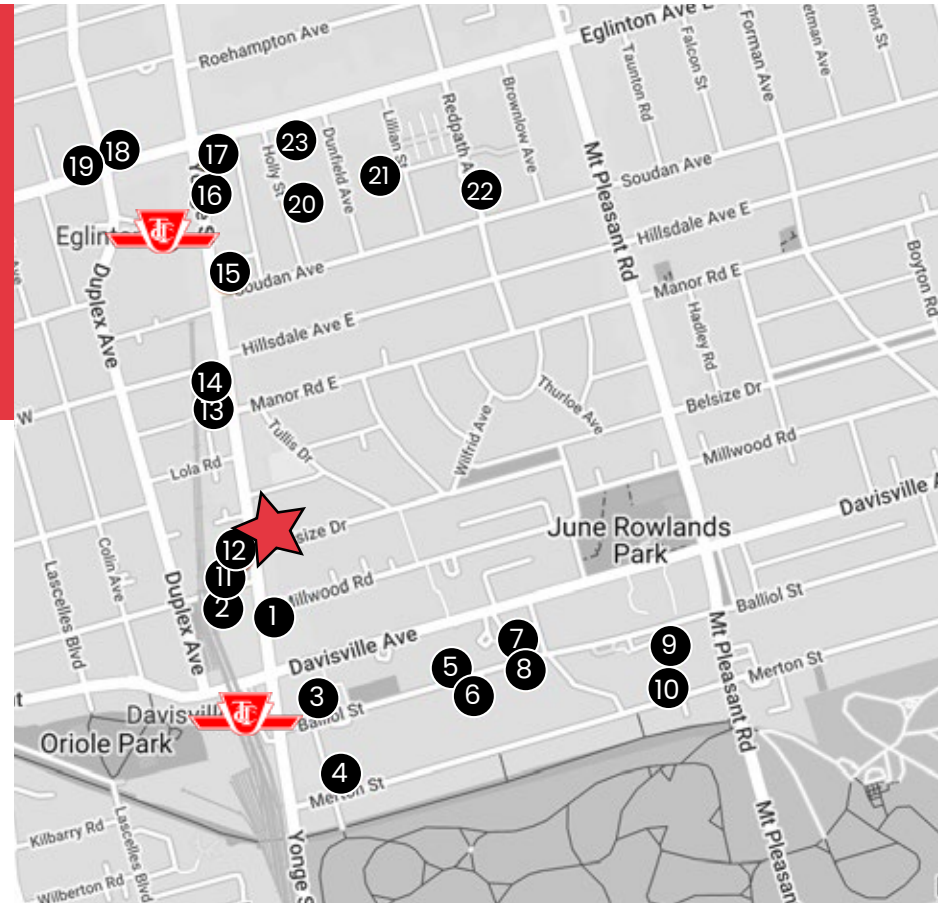
Pre-Construction
Storeys: 38
Units: 555

7. 141 Balliol

Pre-Construction
Storeys: 16
Units: 143

8. 185 Balliol

Pre-Construction
Storeys: 35
Units: 447



9. 265 Balliol

Pre-Construction
Storeys: 27
Units: 223

10. 276-290 Merton

Pre-Construction
Storeys: 16
Units: 100

11. 24 Imperial

Pre-Construction
Storeys: 9
Units: 30

12. 1984 Yonge St

Pre-Construction
Storeys: 9
Units: 30

13. The Davisville

Pre-Construction
Storeys: 12
Units: 86

14. Uovo Boutique

Construction
Storeys: 11
Units: 67

15. Y&S Condos

Construction
Storeys: 35
Units: 307

16. 2221 Yonge

Construction
Storeys: 58
Units: 566



Y&S Condos

3. 22 Balliol

Pre-Construction
Storeys: 38
Units: 425

4. 30 Merton St

Pre-Construction
Storeys: 37
Units: 334

7. 141 Balliol

Pre-Construction
Storeys: 16
Units: 143

8. 185 Balliol

Pre-Construction
Storeys: 35
Units: 447



The Millwood

17. 1 Eglinton East

Pre-Construction
Storeys: 65
Units: 660

18. 36 Eglinton W

Pre-Construction
Storeys: 65
Units: 663

19. 50 Eglinton W

Pre-Construction
Storeys: 34, 39
Units: 688

20. Plaza Midtown

Construction
Storeys: 33, 27
Units: 545

21. Lillian Park

Construction
Storeys: 38, 26
Units: 544

22. 71 Redpath Ave

Construction
Storeys: 21
Units: 180

23. 55 Eglinton East

Construction
Storeys: 50
Units: 461



Uovo Boutique



Advisory Team

Arlin Markowitz*
Executive Vice President
416 815 2374
arlin.markowitz@cbre.com

Alex Edmison*
Senior Vice President
416 874 7266
alex.edmison@cbre.com

Jackson Turner**
Vice President
416 815 2394
jackson.turner@cbre.com

Teddy Taggart*
Senior Sales Associate
416 847 3254
teddy.taggart@cbre.com

Selina Tao
Sales Representative
416 815 2396
selina.tao@cbre.com

*Sales Representative

**Broker

Website at www.urbanretailtoronto.com

Instagram: @urbanretailteamto

CBRE

This disclaimer shall apply to CBRE Limited, Real Estate Brokerage, and to all other divisions of the Corporation; to include all employees and independent contractors ("CBRE"). The information set out herein, including, without limitation, any projections, images, opinions, assumptions and estimates obtained from third parties (the "Information") has not been verified by CBRE, and CBRE does not represent, warrant or guarantee the accuracy, correctness and completeness of the Information. CBRE does not accept or assume any responsibility or liability, direct or consequential, for the Information or the recipient's reliance upon the Information. The recipient of the Information should take such steps as the recipient may deem necessary to verify the Information prior to placing any reliance upon the Information. The Information may change and any property described in the Information may be withdrawn from the market at any time without notice or obligation to the recipient from CBRE. CBRE and the CBRE logo are the service marks of CBRE Limited and/or its affiliated or related companies in other countries. All other marks displayed on this document are the property of their respective owners. All Rights Reserved.