

# 2782 YONGE

PRIME RETAIL FOR LEASE | UPTOWN YONGE



**CBRE**

# 2782 YONGE

PRIME RETAIL FOR LEASE

**Size:** Ground: 4,179 sq. ft.  
Mezzanine: 1,895 sq. ft.  
Total: 6,074 sq. ft.  
+ 4,232 sq. ft. Basement

**Net Rent:** \$30.00 per sq. ft.

**TMI:** \$29.50 per sq. ft.

**Available:** Immediately

- Fully renovated turnkey space with massive frontage and presence on Yonge Street
- Ample Green P street parking along with numerous parking lots in the area including the massive surface lot at the Capitol Event Theatre
- High foot and vehicular traffic
- Includes a finished basement for storage with conveyor belt shipping to door (tenant only pays TMI on basement)
- Area retailers include Sporting Life, Sheridan Nurseries, Roots, Starbucks, Bailey Nelson, Benefit Cosmetic Boutique and Club Monaco
- Walking distance to both Lawrence and Eglinton subway stations
- Surrounded by some of Toronto's wealthiest neighbourhoods



# Uptown YONGE

**2782 Yonge Street is located in the Uptown Yonge area, nestled between two popular neighbourhoods— Yonge and Eglinton and Yonge and Lawrence.**

Uptown Yonge spans an area of approximately 9 blocks along Yonge Street, from Roehampton Avenue to the south to Glengrove Avenue to the north. This area has become a popular destination among Torontonians for shopping and dining and greatly benefits from its mix of local retailers, boutiques, restaurants/bars and international retailers.

South of 2782 Yonge Street is Yonge & Eglinton, a popular neighbourhood for young professionals. The neighbourhood has plenty of restaurants, bars and national retailers including Sephora, Club Monaco, West Elm, Urban Outfitters, Farm Boy, The Keg and Indigo. Yonge and Eglinton is one of Toronto's fastest growing nodes.

To the north of 2782 Yonge is Yonge & Lawrence, a well established neighbourhood popular with families. The area is home to some of the city's best public and private schools and features many popular independent restaurants, cafes and retailers.



## GLENGROVE AVENUE WEST

THE SIGN OF THE SKIER

BELLE CANNABIS

GLENGROVE PHARMACY

AVIS CAR RENTAL

## GLENCAIRN AVENUE

GLENCARIN GARDENS

ALEXANDRA CLEANERS

PRAYOSHA WAX BAR

NAILSENSE SPA

CANADA POST

## ALEXANDRA BLVD.

I LOVE NAILS  
THINGS...

## LYTTON BLVD.

ROOTS

BLYTH ACADEMY

FUZZ WAXBAR

AUSTRALIAN BOOT COMPANY

SAJE NATURAL WELLNESS

STARBUCKS

## CRAIGHURST AVENUE

BAILEY NELSON

CIVELLO

BLUBOHO

BENEFIT COSMETICS BOUTIQUE

CLUB MONACO

OLLY SHOES

MYNC LASH LOUNGE

BLO DRY BLOW DRY BAR

SECOND CUP/PRINKBERRY

## ALBERTUS AVENUE

UNCLE BETTY'S DINER

COOKERY

TIO'S URBAN MEXICAN

CANOPY BLUE

SANDPIPERS

PET VALU

## GLENGROVE AVENUE EAST

GLENGROVE SUBSTATION

SHERIDAN NURSERIES

## STRATHGOWAN AVENUE

THE WINSLOW CONDO  
DEVELOPMENT SITE

ANYTIME FITNESS

TESTA UOMO

UPTOWN YONGE DENTAL

PHYSIOTHERAPY

DIVRGE VR

C'EST BON

DOMINO'S

## BLYTHWOOD ROAD

SPORTING LIFE

CLAP ART

THE CAPTAINS BOIL

MILK COW CAFE

FAVORITE NAILS & SPA

REVITASIZE

RUNNING ROOM

A&W

## SHELDRAKE BLVD

TIM HORTON'S

A KIND HEART STORE

JEROME'S MENSWEAR

THE HUNNYPOT CANNABIS CO.

L'OCCITANE

FLOOR PLAY SOCKS

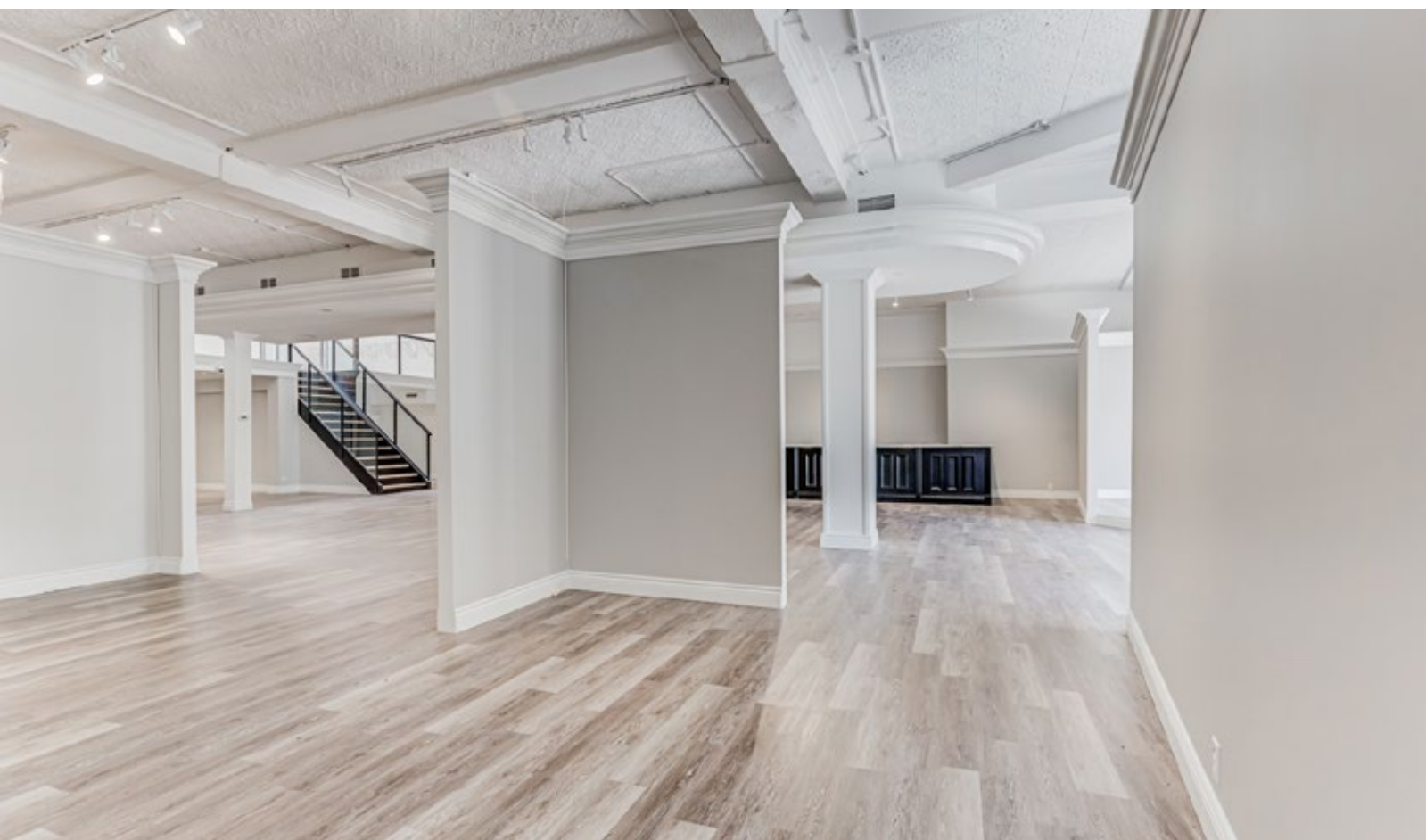
ROBBIE BROWN

WANT APOTHECARY

SPIN CO.

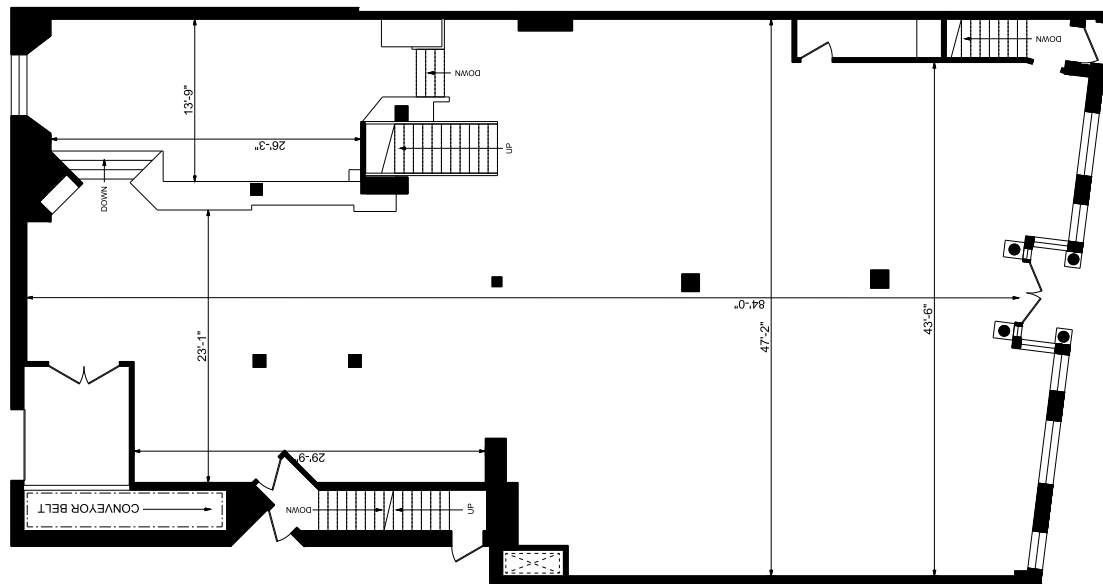
YONGE STREET



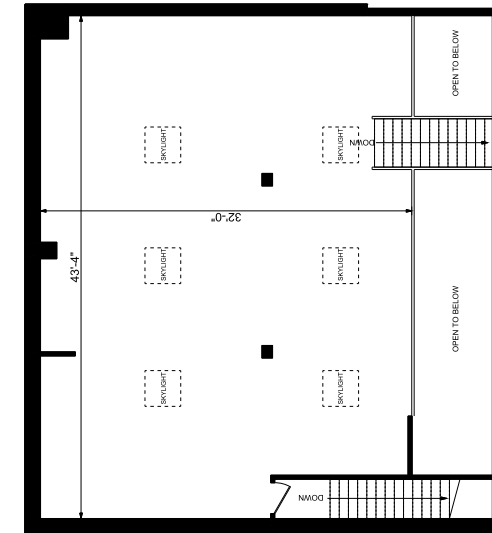


# FLOOR PLANS

## GROUND



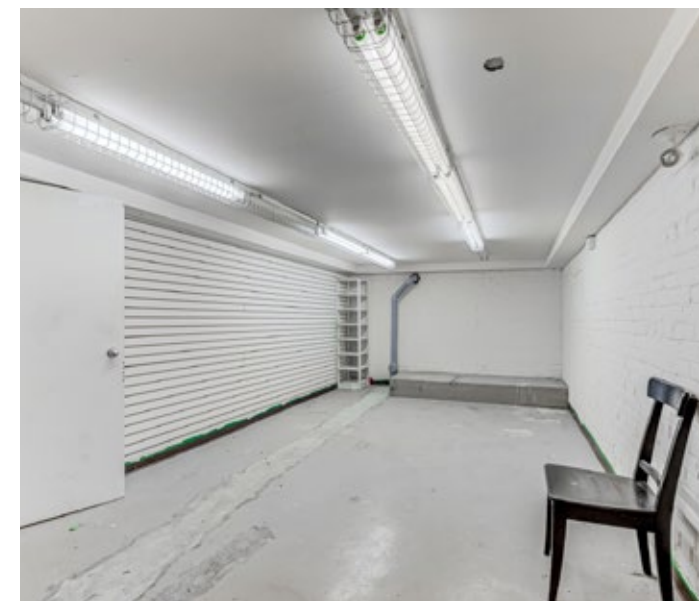
## MEZZANINE



## SIZE

<b>GROUND:</b>	4,179 SQ. FT.
<b>MEZZANINE:</b>	1,895 SQ. FT.
<b>BASEMENT:</b>	4,232 SQ. FT.

## BASEMENT





# Advisory Team

Arlin Markowitz\*  
Executive Vice President  
416 815 2374  
arlin.markowitz@cbre.com

Alex Edmison\*  
Senior Vice President  
416 874 7266  
alex.edmison@cbre.com

Jackson Turner\*\*  
Vice President  
416 815 2394  
jackson.turner@cbre.com

Teddy Taggart\*  
Senior Sales Associate  
416 847 3254  
teddy.taggart@cbre.com

Selina Tao  
Sales Representative  
416 815 2396  
selina.tao@cbre.com

Emily Everett  
Sales Representative  
647 943 4185  
emily.everett@cbre.com

\* Sales Representative

\*\* Broker

Website at [www.urbanretailtoronto.com](http://www.urbanretailtoronto.com)

Instagram: [@urbanretailteamto](https://www.instagram.com/urbanretailteamto)

**CBRE**

This disclaimer shall apply to CBRE Limited, Real Estate Brokerage, and to all other divisions of the Corporation; to include all employees and independent contractors ("CBRE"). The information set out herein, including, without limitation, any projections, images, opinions, assumptions and estimates obtained from third parties (the "Information") has not been verified by CBRE, and CBRE does not represent, warrant or guarantee the accuracy, correctness and completeness of the Information. CBRE does not accept or assume any responsibility or liability, direct or consequential, for the Information or the recipient's reliance upon the Information. The recipient of the Information should take such steps as the recipient may deem necessary to verify the Information prior to placing any reliance upon the Information. The Information may change and any property described in the Information may be withdrawn from the market at any time without notice or obligation to the recipient from CBRE. CBRE and the CBRE logo are the service marks of CBRE Limited and/or its affiliated or related companies in other countries. All other marks displayed on this document are the property of their respective owners. All Rights Reserved.