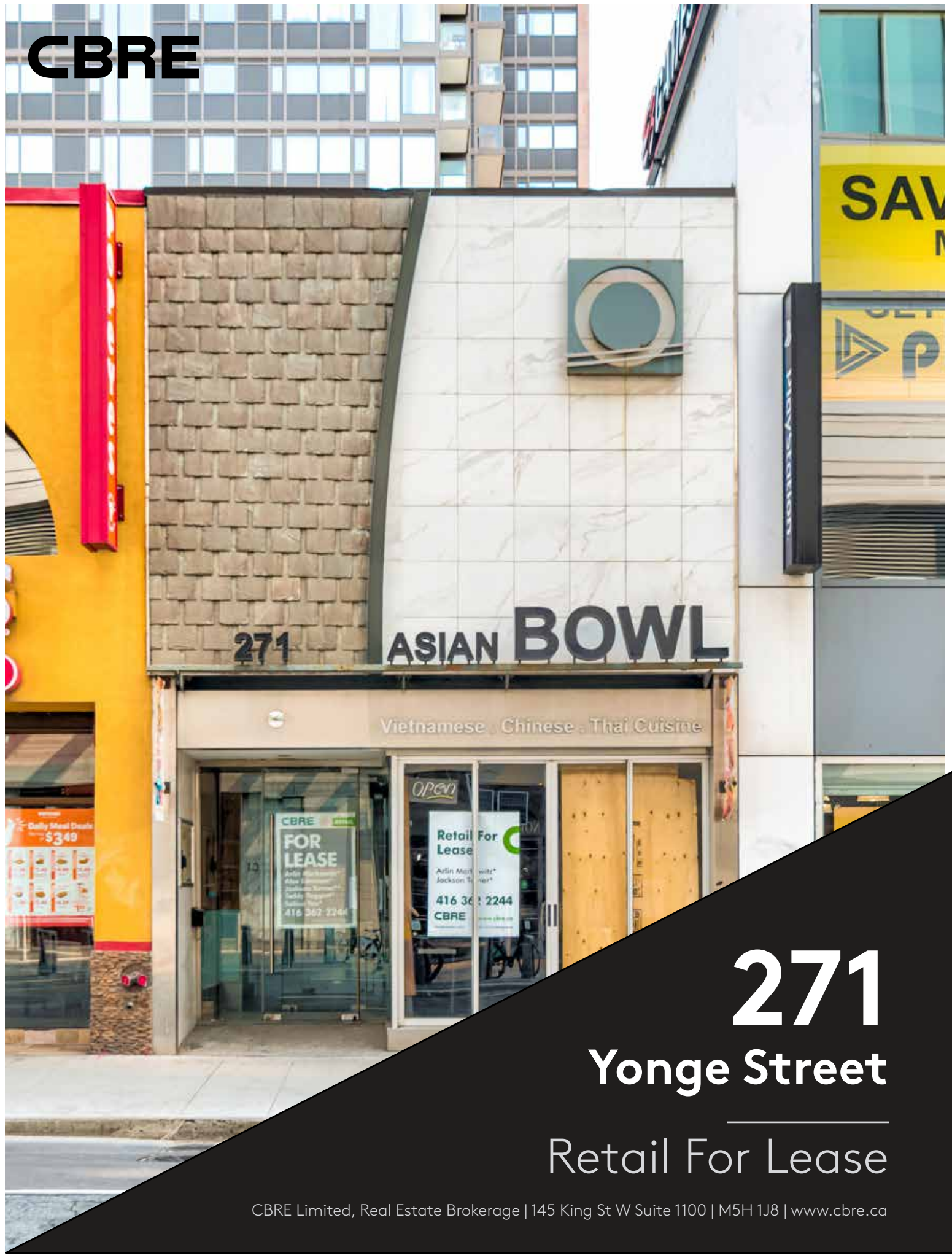


**CBRE**



271

**ASIAN BOWL**

Vietnamese · Chinese · Thai Cuisine

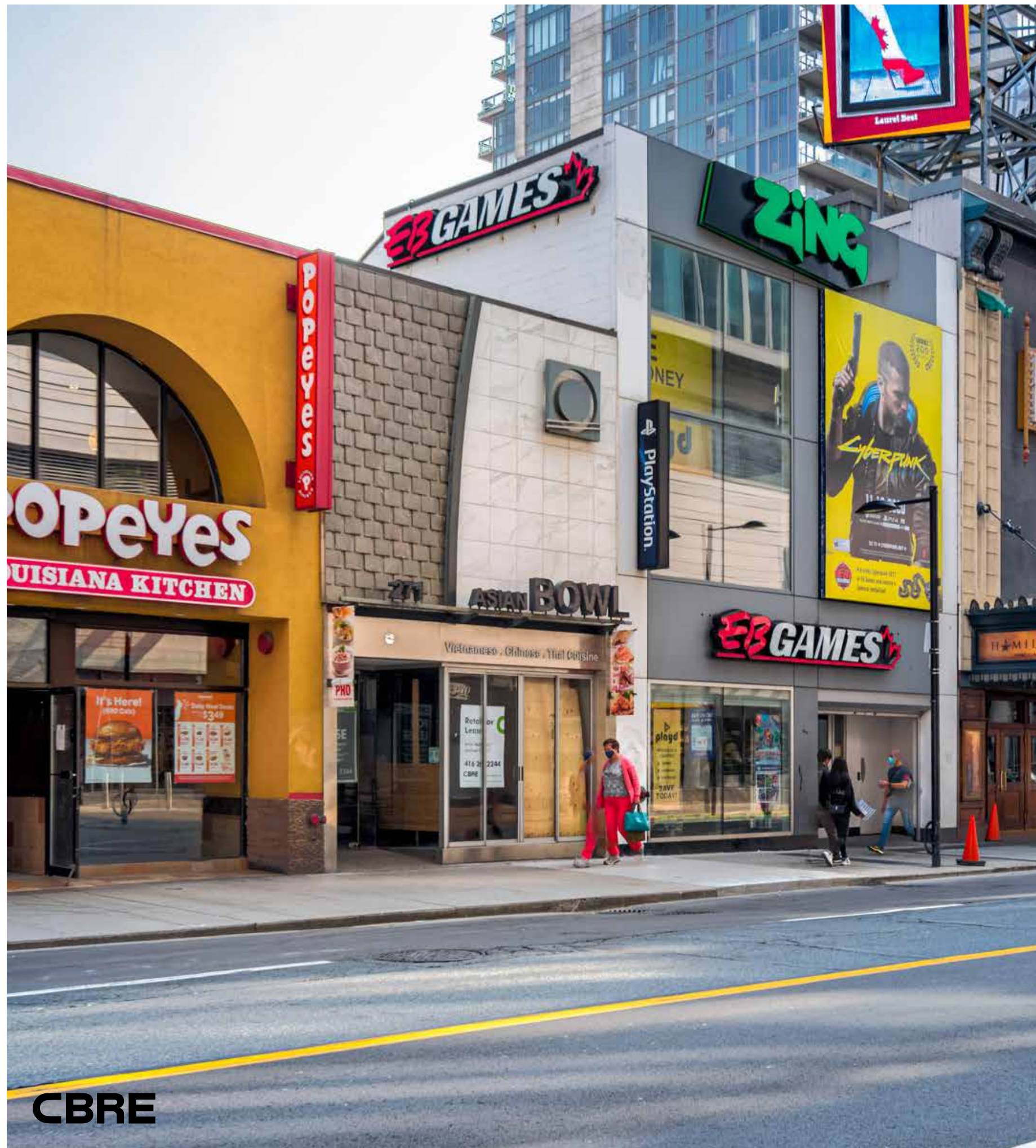
**CBRE**  
**FOR LEASE**  
Arlin Markowitz\*  
Jackson Turner\*  
416 362 2244  
CBRE

*Open*  
**Retail For Lease**  
Arlin Markowitz\*  
Jackson Turner\*  
416 362 2244  
CBRE

**271**

**Yonge Street**

Retail For Lease



# 271

## Yonge Street

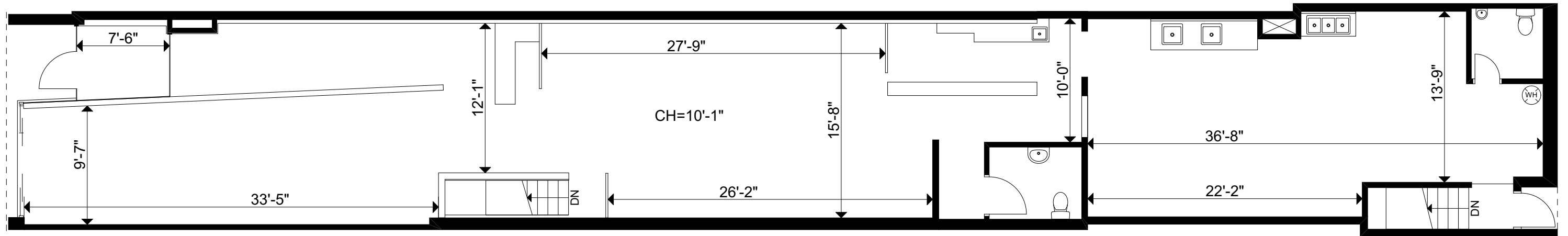
Retail For Lease

Size:	2,151 sq. ft.
TMI:	\$75.02 per sq. ft.
Net Rent:	Call Listing Agent
Available:	Immediately

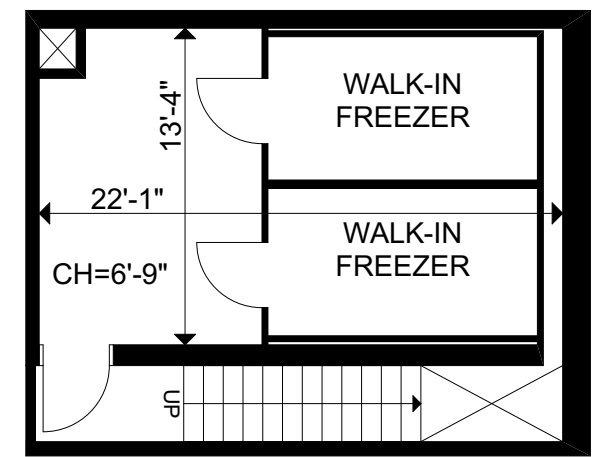
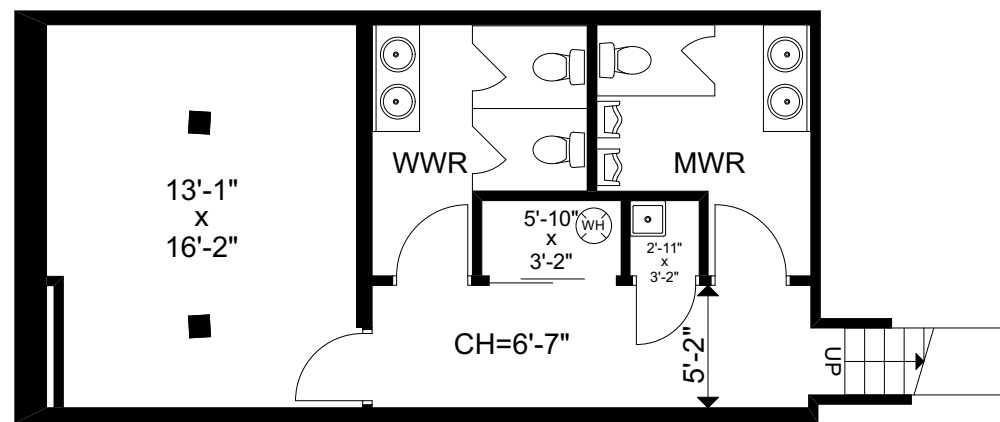
- » Entire free standing building with double height facade
- » Includes 1,037 sq. ft. basement
- » Directly across from the Eaton Centre and steps to Yonge and Dundas Square
- » Heavy pedestrian foot traffic
- » Nearby Retailers include: EB Games, Popeyes, Brewers, Shoppers Drug Mart, Nordstrom, Foot Locker & many more

# FLOORPLANS

## GROUND FLOOR | 2,151 SF



## BASEMENT | 1,037 SF



# 271

## Yonge Street

Retail For Lease

### THE LOCATION

Yonge & Dundas is the Times Square of Canada and together with the Toronto Eaton Centre, attracts the most visitors of any of Toronto's tourist attractions with over 50 million visitors annually.

The area sees more annual visitors than Disneyland and Wald Disney World combined, the Las Vegas Strip and either of the two busiest malls in the United States (Mall of America and Ala Moana Centre). It is North America's busiest mall, largely because of its central downtown location, extensive transit access and tourist traffic.



**351,062**  
Total Population\*

**767,570**  
Daytime Population\*



**\$124,755**  
Avg. Household Income\*

# 271

## Yonge Street

Retail For Lease





**271**  
**Yonge Street**  
Retail For Lease

**For More Information,  
Please Contact:**

**Arlin Markowitz\***  
Executive Vice President  
416 815 2374  
arlin.markowitz@cbre.com

**Alex Edmison\***  
Senior Vice President  
416 874 7266  
alex.edmison@cbre.com

**Jackson Turner\*\***  
Vice President  
416 815 2394  
jackson.turner@cbre.com

**Teddy Taggart**  
Senior Sales Associate  
416 847 3254  
teddy.taggart@cbre.com

**Emily Everett**  
Sales Representative  
647 943 4185  
emily.everett@cbre.com

**\*Sales Representative \*\*Broker**

This disclaimer shall apply to CBRE Limited, Real Estate Brokerage, and to all other divisions of the Corporation; to include all employees and independent contractors ("CBRE"). The information set out herein, including, without limitation, any projections, images, opinions, assumptions and estimates obtained from third parties (the "Information") has not been verified by CBRE, and CBRE does not represent, warrant or guarantee the accuracy, correctness and completeness of the Information. CBRE does not accept or assume any responsibility or liability, direct or consequential, for the Information or the recipient's reliance upon the Information. The recipient of the Information should take such steps as the recipient may deem necessary to verify the Information prior to placing any reliance upon the Information. The Information may change and any property described in the Information may be withdrawn from the market at any time without notice or obligation to the recipient from CBRE. CBRE and the CBRE logo are the service marks of CBRE Limited and/or its affiliated or related companies in other countries. All other marks displayed on this document are the property of their respective owners. All Rights Reserved.

**CBRE**