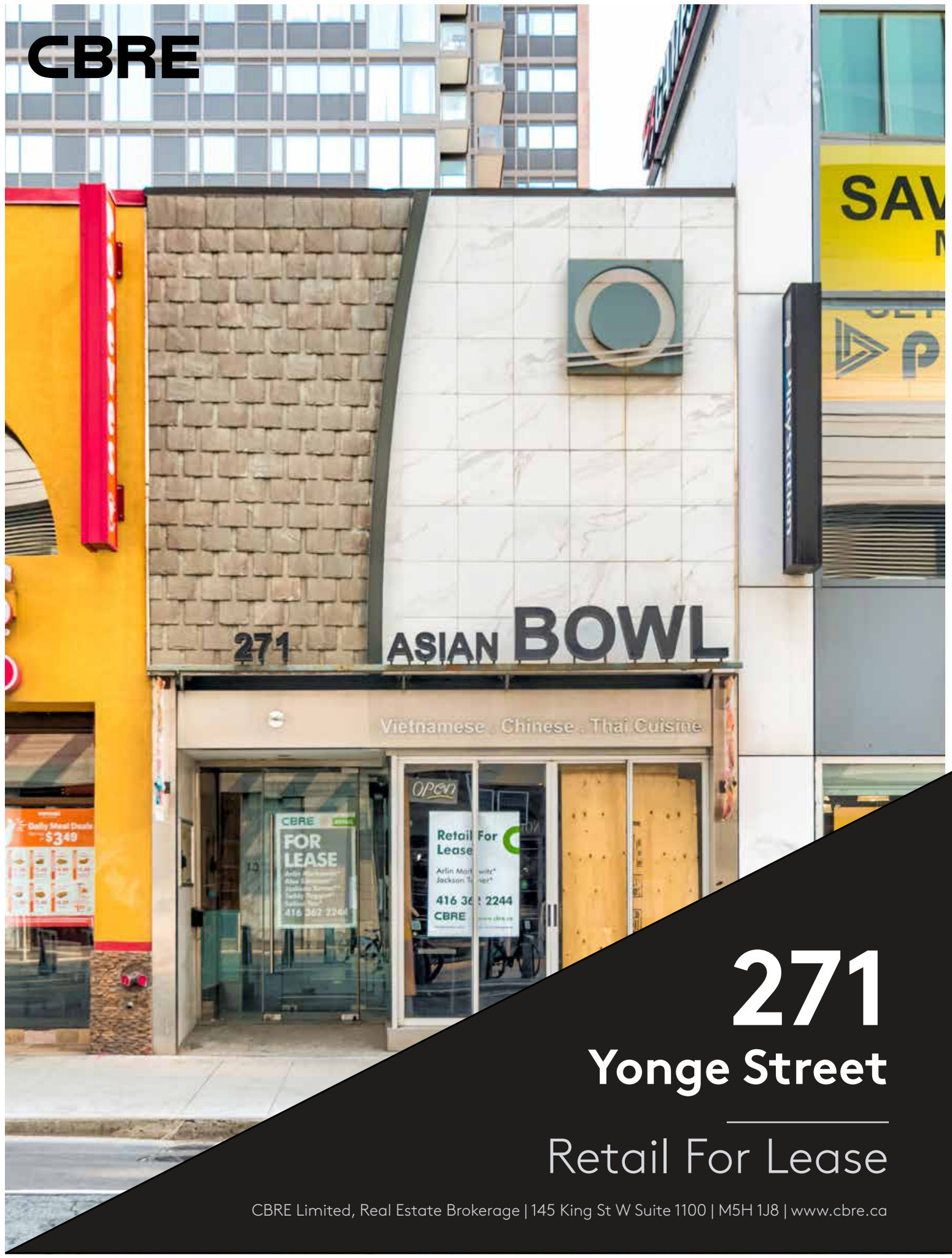


CBRE



271

ASIAN BOWL

Vietnamese · Chinese · Thai Cuisine

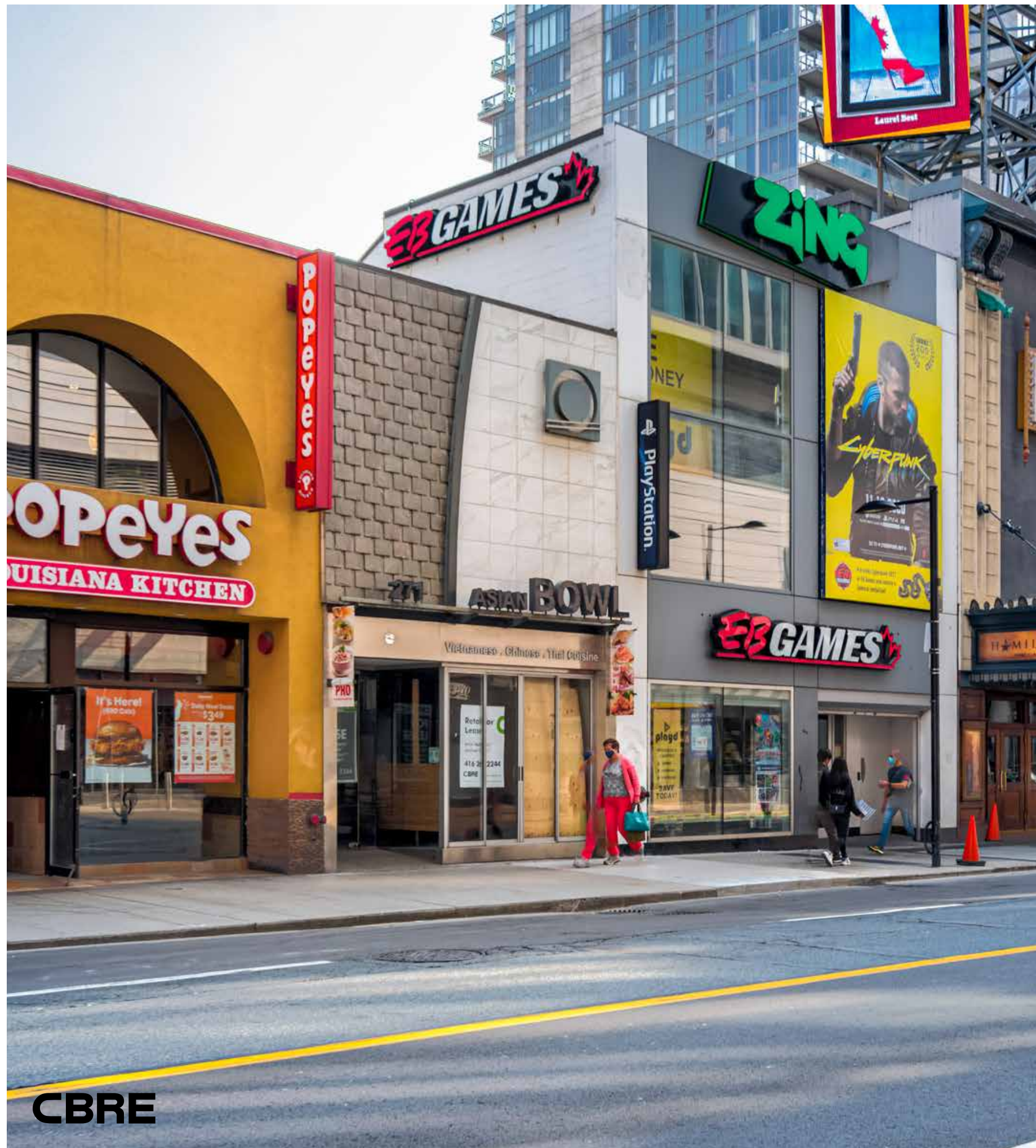
CBRE
FOR LEASE
Arlin Markowitz*
Jackson Turner*
416 362 2244
CBRE

Open
Retail For Lease
Arlin Markowitz*
Jackson Turner*
416 362 2244
CBRE

271

Yonge Street

Retail For Lease



271

Yonge Street

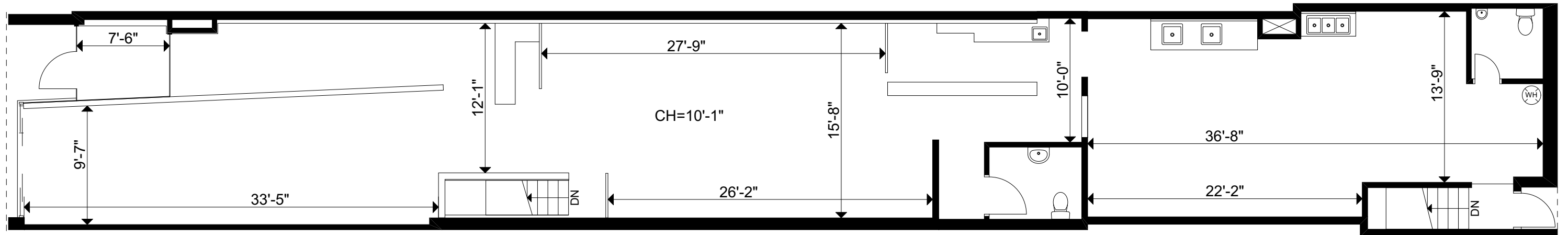
Retail For Lease

Size: 2,151 sq. ft.
Net Rent: Call Listing Agent
Available: Immediately

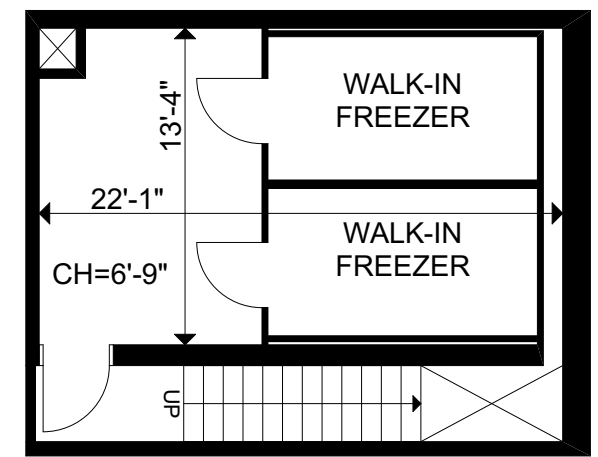
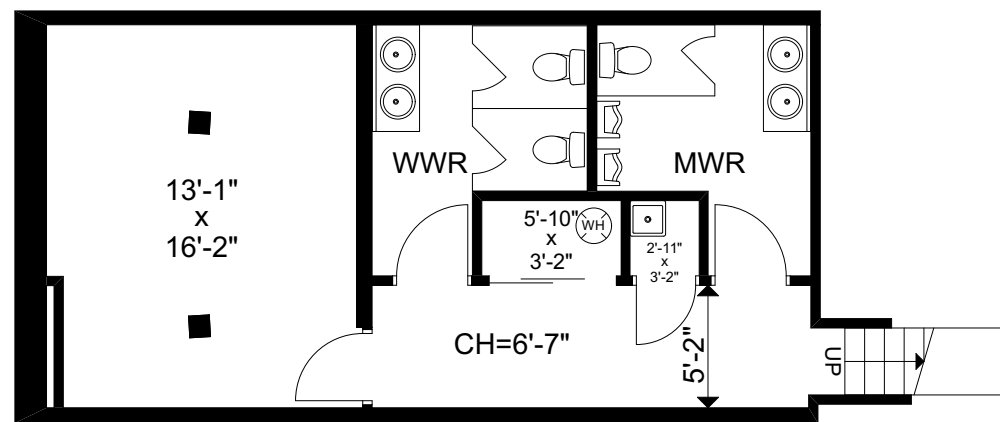
- » Entire free standing building with double height facade
- » Includes 1,037 sq. ft. basement
- » Directly across from the Eaton Centre and steps to Yonge and Dundas Square
- » Heavy pedestrian foot traffic
- » Nearby Retailers include: EB Games, Popeyes, Brewers, Shoppers Drug Mart, Nordstrom, Foot Locker & many more

FLOORPLANS

GROUND FLOOR | 2,151 SF



BASEMENT | 1,037 SF



271

Yonge Street

Retail For Lease

THE LOCATION

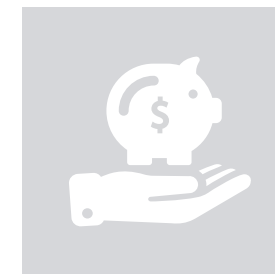
Yonge & Dundas is the Times Square of Canada and together with the Toronto Eaton Centre, attracts the most visitors of any of Toronto's tourist attractions with over 50 million visitors annually.

The area sees more annual visitors than Disneyland and Wald Disney World combined, the Las Vegas Strip and either of the two busiest malls in the United States (Mall of America and Ala Moana Centre). It is North America's busiest mall, largely because of its central downtown location, extensive transit access and tourist traffic.



351,062
Total Population*

767,570
Daytime Population*



\$124,755
Avg. Household Income*

271

Yonge Street

Retail For Lease





271
Yonge Street
Retail For Lease

**For More Information,
Please Contact:**

Arlin Markowitz*
Executive Vice President
416 815 2374
arlin.markowitz@cbre.com

Alex Edmison*
Senior Vice President
416 874 7266
alex.edmison@cbre.com

Jackson Turner**
Vice President
416 815 2394
jackson.turner@cbre.com

Teddy Taggart
Senior Sales Associate
416 847 3254
teddy.taggart@cbre.com

Emily Everett
Sales Representative
647 943 4185
emily.everett@cbre.com

CBRE

*Sales Representative **Broker

This disclaimer shall apply to CBRE Limited, Real Estate Brokerage, and to all other divisions of the Corporation; to include all employees and independent contractors ("CBRE"). The information set out herein, including, without limitation, any projections, images, opinions, assumptions and estimates obtained from third parties (the "Information") has not been verified by CBRE, and CBRE does not represent, warrant or guarantee the accuracy, correctness and completeness of the Information. CBRE does not accept or assume any responsibility or liability, direct or consequential, for the Information or the recipient's reliance upon the Information. The recipient of the Information should take such steps as the recipient may deem necessary to verify the Information prior to placing any reliance upon the Information. The Information may change and any property described in the Information may be withdrawn from the market at any time without notice or obligation to the recipient from CBRE. CBRE and the CBRE logo are the service marks of CBRE Limited and/or its affiliated or related companies in other countries. All other marks displayed on this document are the property of their respective owners. All Rights Reserved.