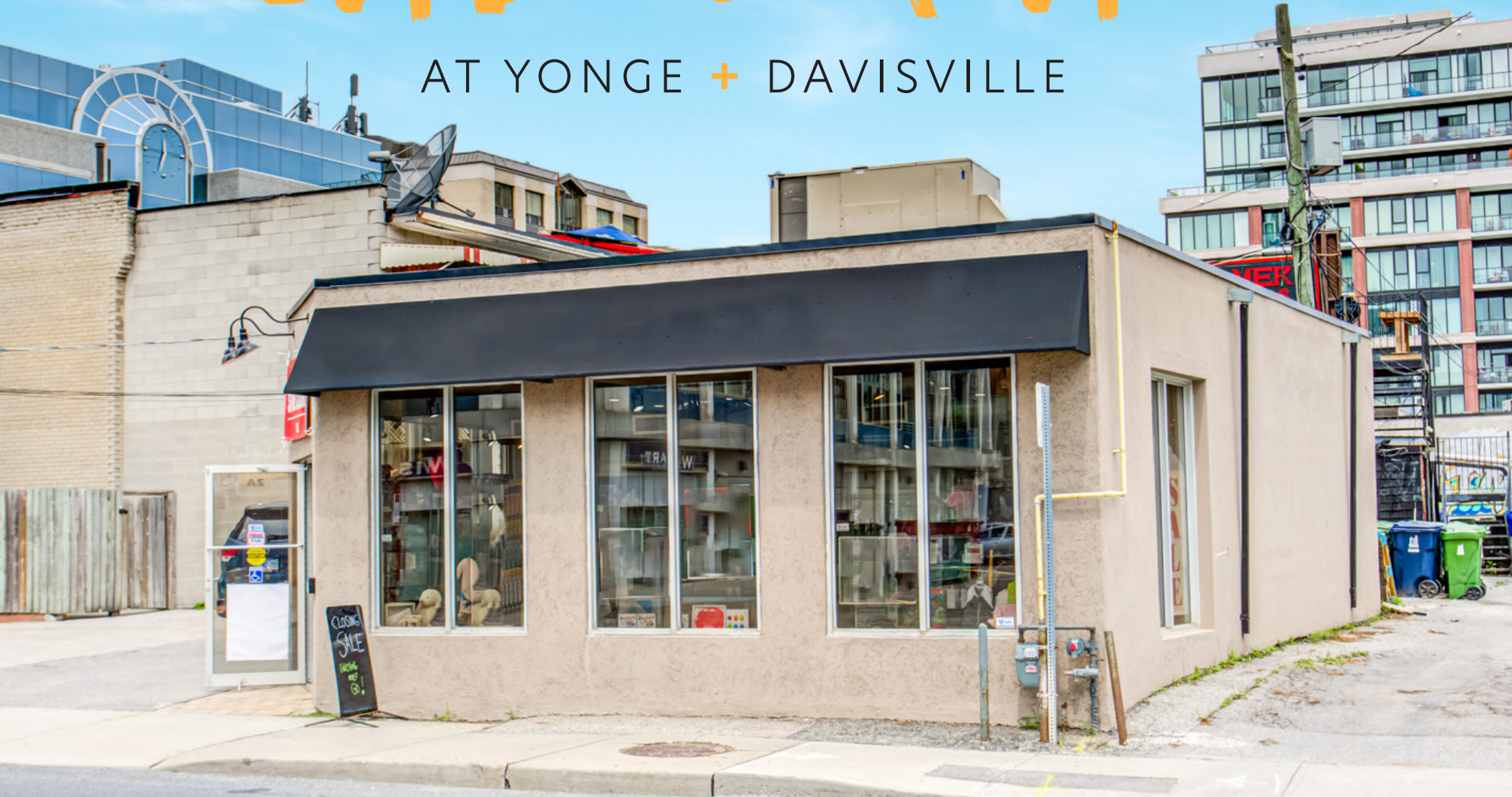


2A Davisville Ave

AT YONGE + DAVISVILLE



CBRE

RETAIL FOR LEASE

SIZE: 1,000 sq. ft.

NET RENT: \$5,000 per month

TMI: \$1,375.00 per month (2021 est)

AVAILABLE: Immediately

PARKING: 1 space

- Situated at the busy intersection of Yonge & Davisville across the street from Davisville subway station
- Right-sized space for a vast array of retailers
- Amazing signage opportunity & great exposure
- Next to the nearly completed Davisville Jr. Public School and Community Centre
- Currently occupied by Spoiled Baby



CBRE



INTERIOR PHOTOS



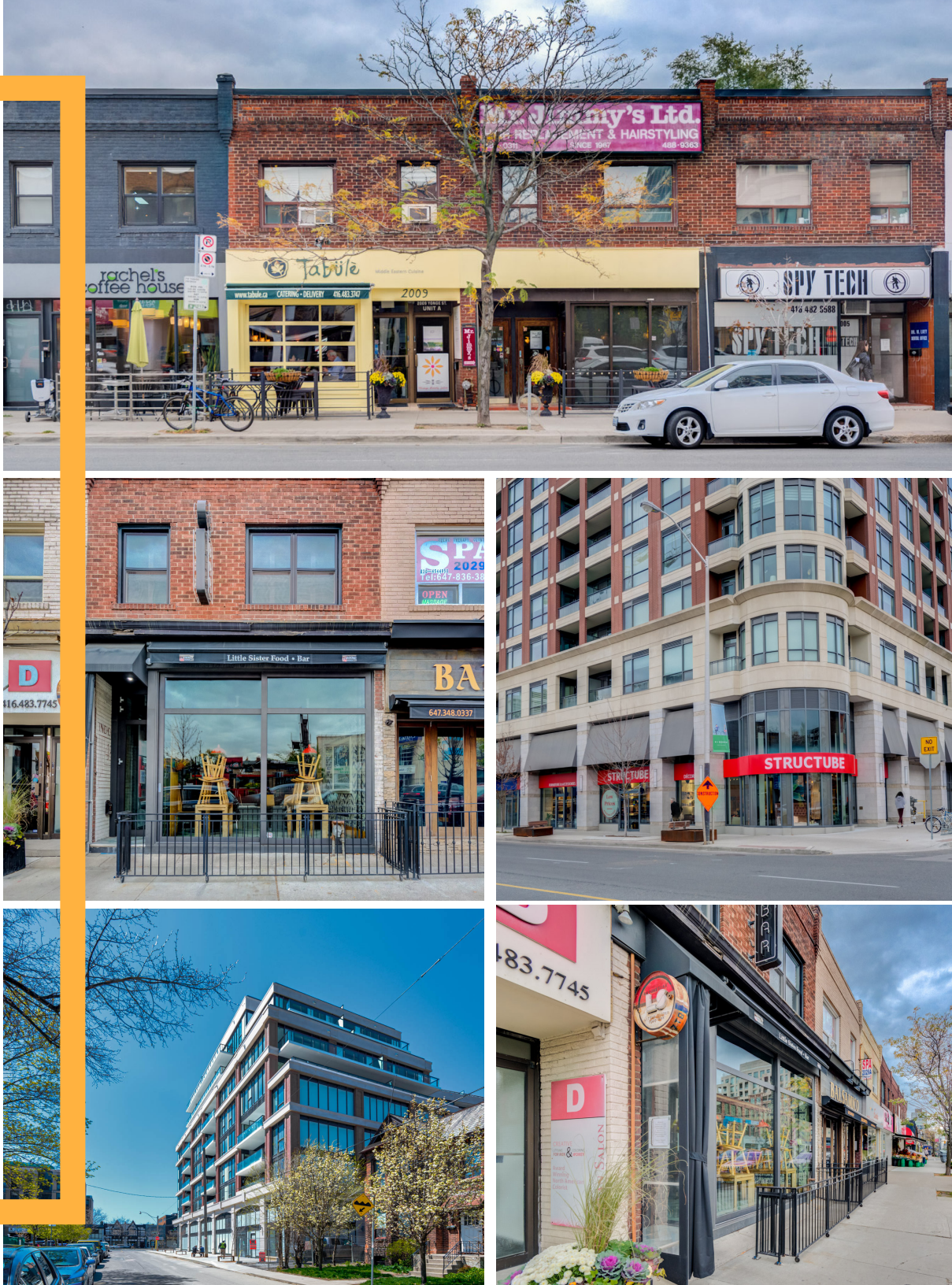
CBRE

YONGE + DAVISVILLE

OVERVIEW

2A Davisville Avenue is located in Midtown Toronto in the heart of Davisville

Davisville is a popular neighbourhood for families with it's tree-lined streets, single family homes, independent shops and restaurants and numerous neighbourhood parks. The neighbourhood is well connected, serviced by the Yonge-University subway line and a variety of bus routes. Union Station is only 15 minutes away by subway and access to the Bloor-Danforth subway line and Bloor-Yorkville is only a 5 minute ride away.



west elm

HILLSDALE AVENUE



MANOR ROAD EAST

- SKIS AND BIKES
- LITTLE SISTER FOOD BAR

GLEBE ROAD

- DEE THAI CUISINE



BELSIZE ROAD

J. DAVIS. HOUSE

LCBO

MILLWOOD ROAD

- PIZZA PIZZA
- KRAMER'S BAR & GRILL



DAVISVILLE AVE

- GUARDIAN PHARMACY
- THAI EXPRESS

BALLIOL STREET

- FIONN MACCOOLS
- ETHAN ALLEN



- UOVO RESIDENCES
- CYCLEPATH

- PEPPERMILLS

LOLA ROAD



STRUCTUBE

- 2000 YONGE DENTAL
- RITCHIE FRAME ART GALLERY

IMPERIAL STREET



- THE WALLACE GASTROPUB
- SUBWAY



DAVISVILLE AVE

DAVISVILLE SUBWAY STATION



TORONTO TRANSIT
COMMISSION HEAD OFFICE





Contacts

ARLIN MARKOWITZ*

Executive Vice President
416 815 2374
arlin.markowitz@cbre.com

ALEX EDMISON*

Senior Vice President
416 874 7266
alex.edmison@cbre.com

JACKSON TURNER**

Vice President
416 815 2394
jackson.turner@cbre.com

TEDDY TAGGART*

Senior Sales Associate
416 847 3254
teddy.taggart@cbre.com

*Sales Representative **Broker

This disclaimer shall apply to CBRE Limited, Real Estate Brokerage, and to all other divisions of the Corporation; to include all employees and independent contractors ("CBRE"). The information set out herein, including, without limitation, any projections, images, opinions, assumptions and estimates obtained from third parties (the "Information") has not been verified by CBRE, and CBRE does not represent, warrant or guarantee the accuracy, correctness and completeness of the Information. CBRE does not accept or assume any responsibility or liability, direct or consequential, for the Information or the recipient's reliance upon the Information. The recipient of the Information should take such steps as the recipient may deem necessary to verify the Information prior to placing any reliance upon the Information. The Information may change and any property described in the Information may be withdrawn from the market at any time without notice or obligation to the recipient from CBRE. CBRE and the CBRE logo are the service marks of CBRE Limited and/or its affiliated or related companies in other countries. All other marks displayed on this document are the property of their respective owners. All Rights Reserved.