

37 King Street East

PRIME RETAIL FOR LEASE AT THE CORNER OF KING STREET & LEADER LANE



CBRE

CBRE LIMITED, REAL ESTATE BROKERAGE | 145 KING STREET WEST | SUITE 1100 | TORONTO, ON M5H 1J8 | 416 362 2244 | WWW.CBRE.CA | WWW.URBANRETAILTORONTO.COM



Property Details

Size: 1,808 sq. ft.

Net Rent: Please contact listing agents

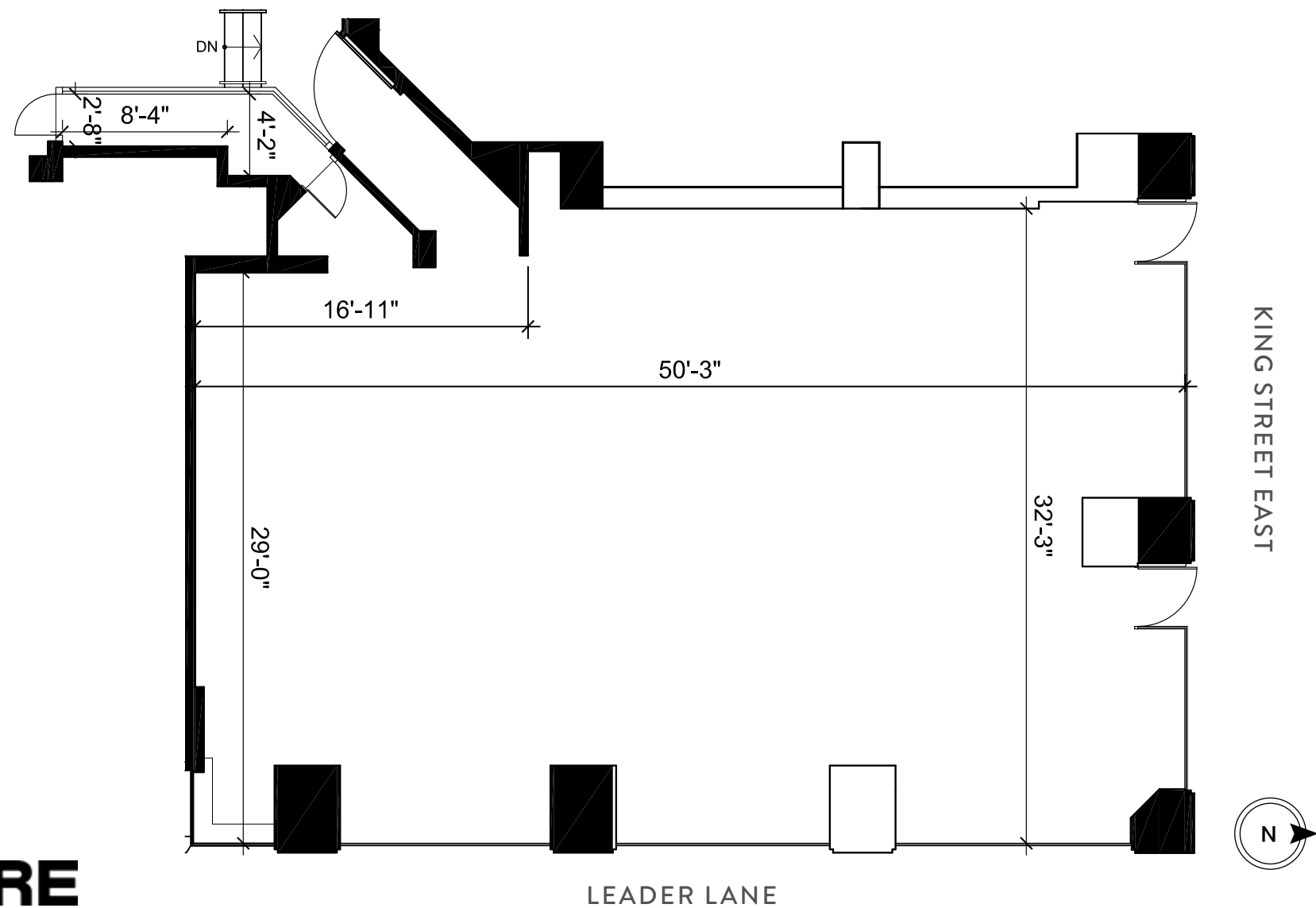
TMI: \$20.00 per sq. ft.

Available: Immediately

- Fully fixtured café space
- Located on the ground floor of the Omni King Edward Hotel, directly across from Google's new 400,000 sq. ft. head office
- Over 100 ft. of wraparound frontage
- Centralized location with incredible surrounding density
- Directly on the 504 King streetcar line and a 2 minute walk to King subway station



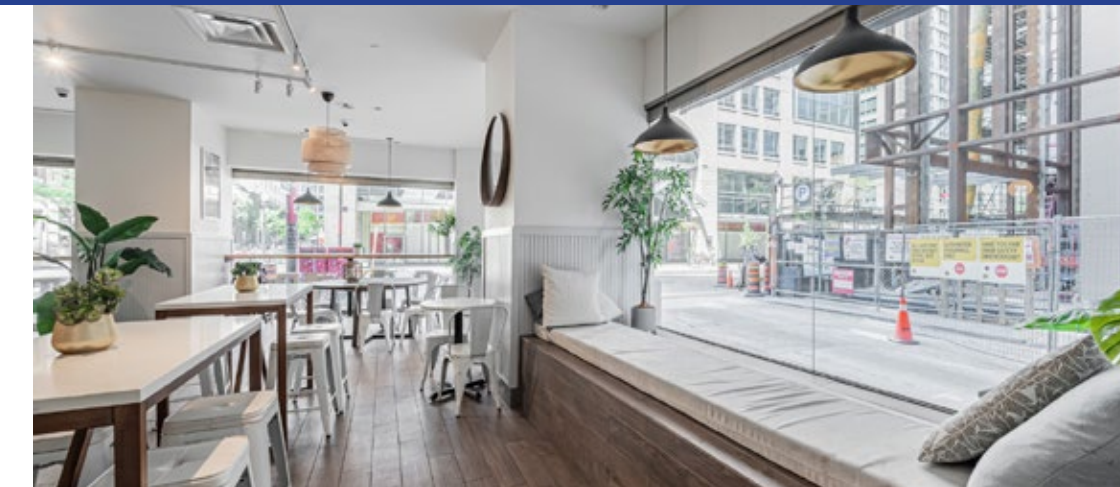
37 King Street East Floorplan



CBRE



Interior Photos



CBRE



CBRE

FINANCIAL CORE

CITY HALL

EATON CENTRE

37 KING EAST

GOOGLE HEAD OFFICE

BERCZY PARK

ST. JAMES PARK

ST. LAWRENCE MARKET



Location Overview

Located in the heart of Downtown East, 37 King Street East is surrounded by iconic Toronto points-of-interests, unmatched transit infrastructure, urban amenities and high population density. The property is across from Google's new 400,000 sq. ft. head office. Proximity to key employment nodes including the Financial Core, government offices, hospital districts, Ryerson University and George Brown College, enables the neighbourhood to attract a high concentration of young professionals, new graduates and students.

Located where the Financial Core and St. Lawrence Market neighbourhood meet, the area is uniquely characterized by older brick-and-beam commercial assets situated amongst a number of recently complete and currently under construction residential buildings and high-profile office developments.

Given the rapid pace of population growth and influx in investment and residential/office development activity, this area of Downtown Toronto remains one of the City's focal points for real estate.

Neighbouring Tenants



FOOD/DRINK

- 1 PJ O'Brien Pubs
- 2 Woods Restaurant
- 3 Sukho Thai
- 4 Fresh
- 5 CC Lounge
- 6 HotHouse Restaurant
- 7 Third Wave Coffee
- 8 Pi Co. Pizza Bar
- 9 Score on King
- 10 Starbucks
- 11 Barsa Taberna
- 12 Terroni
- 13 Carisma
- 14 Beer Market
- 15 Old Spaghetti Factory
- 16 The Keg
- 17 Jump
- 18 Cantina Mercatto
- 19 Craft Beer Market
- 20 AAA Bar
- 21 Popeyes
- 22 Beer Bistro
- 23 O&B Cafe
- 23 Goose Island Brewhouse

ENTERTAINMENT/ TOURIST ATTRACTION

- 1 Hockey Hall of Fame
- 2 Meridian Hall
- 3 Imagine Cinemas
- 4 Flatiron Building
- 5 St. Lawrence Market

SHOPPING

- 1 St. Lawrence Market
- 2 Winners
- 3 Rexall
- 4 Metro
- 5 Garrison Bespoke
- 6 LCBO
- 7 Shoppers Drug Mart
- 8 BoConcept
- 9 Drechsel Studio
- 10 Wine Rack
- 11 Shoppers Drug Mart

HOTELS

- 1 King Edard Hotel
- 2 One King West
- 3 Novotel
- 4 St. Regis
- 5 Hotel Victoria
- 6 Cosmopolitan





CBRE

Contact

Arlin Markowitz*

Executive Vice President

416 815 2374

arlin.markowitz@cbre.com**Alex Edmison****

Senior Vice President

416 874 7266

alex.edmison@cbre.com**Jackson Turner****

Vice President

416 815 2394

jackson.turner@cbre.com**Teddy Taggart***

Senior Sales Associate

416 847 3254

teddy.taggart@cbre.com

*Sales Representative

**Broker

This disclaimer shall apply to CBRE Limited, Real Estate Brokerage, and to all other divisions of the Corporation; to include all employees and independent contractors ("CBRE"). The information set out herein, including, without limitation, any projections, images, opinions, assumptions and estimates obtained from third parties (the "Information") has not been verified by CBRE, and CBRE does not represent, warrant or guarantee the accuracy, correctness and completeness of the Information. CBRE does not accept or assume any responsibility or liability, direct or consequential, for the Information or the recipient's reliance upon the Information. The recipient of the Information should take such steps as the recipient may deem necessary to verify the Information prior to placing any reliance upon the Information. The Information may change and any property described in the Information may be withdrawn from the market at any time without notice or obligation to the recipient from CBRE. CBRE and the CBRE logo are the service marks of CBRE Limited and/or its affiliated or related companies in other countries. All other marks displayed on this document are the property of their respective owners. All Rights Reserved.