

*retail for lease*

# 233 COLLEGE

TWO RIGHT-SIZED RETAIL UNITS AVAILABLE | TORONTO, ON

---



CBRE Limited, Real Estate Brokerage | 145 King Street West | Suite 1100 | Toronto, ON M5H 1J8 | 416 362 2244 | [www.cbre.ca](http://www.cbre.ca)

**CBRE**

# Retail For Lease

~~Unit A + B~~ **LEASED!**

## Unit C - 765 sq. ft.

Rent: \$4,974/month

TMI est.: \$1,275/month

Total: \$6,249/month

*Available Immediately*

## Unit D - 871 sq. ft.

Rent: \$5,440/month

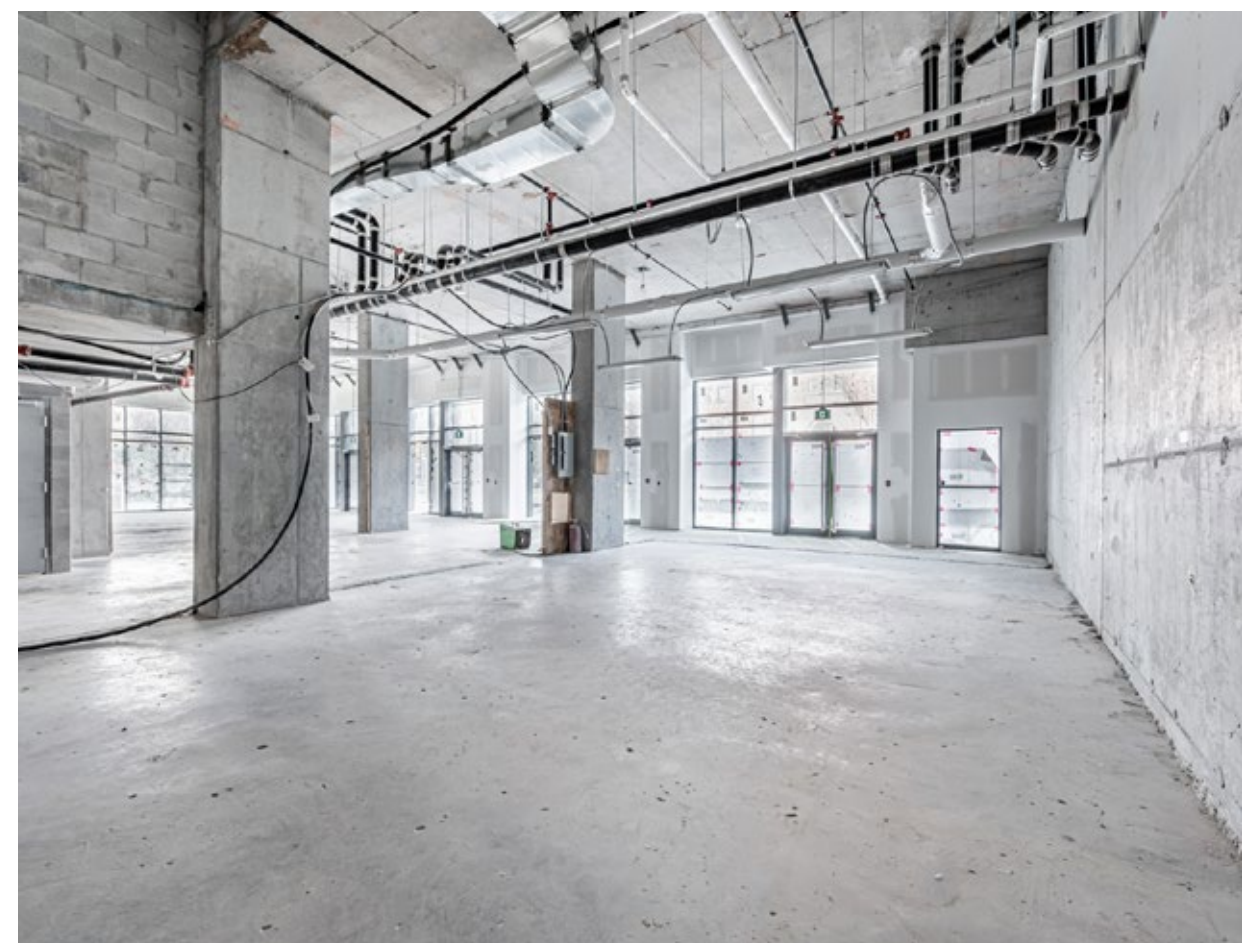
TMI est.: \$1,451/month

Total: \$6,891/month

*Available Immediately*

- Brand new retail space on the ground level of the 116-unit Design Haus Condos
- Incredible location along College Street, directly across the street from the University of Toronto campus
- Excellent connectivity with direct access to the 506 Carlton streetcar and steps to the 510 Spadina streetcar
- Heavy vehicular and pedestrian traffic







Financial District

Hospital Row

Queen's Park

University of Toronto

233 College St

Chinatown

Kensington Market

233 College Street occupies a premier position on College Street, steps to Spadina Avenue, where China Town, the University of Toronto and Kensington Market meet.



## Advisors

**Arlin Markowitz\***  
Executive Vice President  
416 815 2374  
arlin.markowitz@cbre.com

**Alex Edmison\***  
Senior Vice President  
416 874 7266  
alex.edmison@cbre.com

**Jackson Turner\*\***  
Vice President  
416 815 2394  
jackson.turner@cbre.com

**Teddy Taggart\***  
Senior Sales Associate  
416 847 3254  
teddy.taggart@cbre.com

**Emily Everett\***  
Sales Representative  
647 943 4185  
emily.everett@cbre.com

\*Sales Representative

\*\*Broker

**CBRE**

This disclaimer shall apply to CBRE Limited, and to all divisions of the Corporation ("CBRE"). The information set out herein (the "Information") has not been verified by CBRE, and CBRE does not represent, warrant or guarantee the accuracy, correctness and completeness of the Information. CBRE does not accept or assume any responsibility or liability, direct or consequential, for the Information or the recipient's reliance upon the Information. The recipient of the Information should take such steps as the recipient may deem necessary to verify the Information prior to placing any reliance upon the Information. The Information may change and any property described in the Information may be withdrawn from the market at any time without notice or obligation to the recipient from CBRE.