

# 1088 YONGE

CORNER RETAIL FOR LEASE IN THE HEART OF SUMMERHILL



## CBRE

# 1088 YONGE

CORNER RETAIL FOR LEASE IN THE HEART OF SUMMERHILL

**Size:** 3,682 sq. ft.

**Net Rent:** \$50.00 per sq. ft.

**TMI:** \$23.30 per sq. ft.

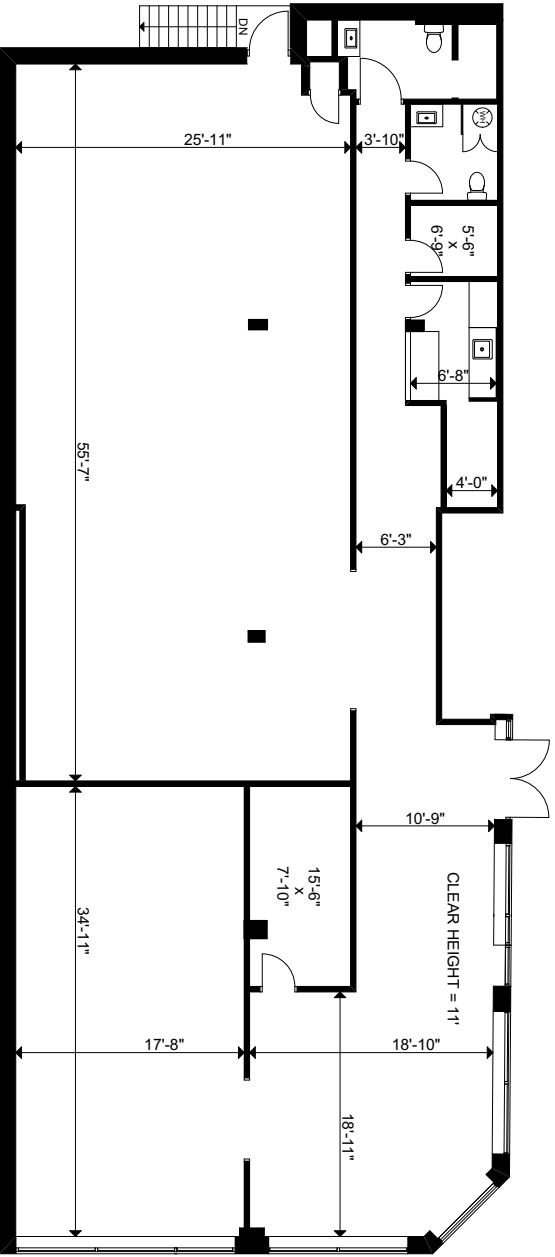
**Available:** Immediately

- Features very rare free on-site parking
- Bright and airy ground level space with high ceilings and large floor to ceiling windows
- Ideally located in the heart of Summerhill at the corner of Yonge Street and Roxborough Street West
- Steps from the Rosedale subway station and within a few minutes walk to Summerhill subway station
- Surrounded by well-established affluent neighbourhoods (Summerhill, Rosedale, Yorkville, Forest Hill) featuring Toronto's leading household income characteristics
- Neighbouring tenants include Starbucks, Gee Beauty, Shoppers Drug Mart, Boxcar Social, SpinCo, Waxon Waxbar, Mastermind Toys, LCBO, Summerhill Market and Terroni



# GROUND FLOOR PLAN

3,682 sq. ft.



YONGE STREET



WOODLAWN AVE

ADORN  
NUTBAR  
WAXON WAXBAR

WALKER AVE

CANNOE  
TUCK SHOP TRADING CO.  
IMPACT KITCHEN

ALCORN AVE

SPINCO  
THIRTY SIX KNOTS  
BOXCAR SOCIAL

BIRCH AVE

WALKING ON A CLOUD  
ROSEDALE DINER  
SORREL RESTAURANT  
CADOGAN & CO.  
CANADA TRUST

MARLBOROUGH AVE

SHOP THURSDAYS  
FARROW AND BALL  
THE NARWAL  
ROGERS

MACPHERSON AVE

HOPSON GRACE  
QUANTO BASTA  
PUTTI FINE FURNISHINGS  
ELLIE MAE  
GEE BEAUTY PANTRY

ROXBOROUGH STREET W

STARBUCKS  
**1088 YONGE STREET**  
WANT APOTHECARY  
THE REBEL HOUSE  
PAUL HAHN & CO

GIBSON AVENUE

CLEMENTINE'S BOUTIQUE

FRAN AND CO.

SUMMERHILL AVE

D&E LAKE LTD. FINE ARTS  
GERRY WEBER  
MEPHISTO SHOES

SHARELIFE

**M** SUMMERHILL  
SUBWAY STATION

SHAFTESBURY AVE

MASTERMIND TOYS  
SASH  
LCBO

SCRIVENER SQUARE

THE JAMES CONDO  
HARVEST WAGON  
NADEGE  
TERRONI

PRICE STREET

SLEEP COUNTRY  
RUNNING ROOM  
SHELL

ROWANWOOD AVE

NIGHT AND DAY WINDOW DECOR  
SUPERETTE  
THE QUAIL  
FRESHII  
TOTUM LIFE SCIENCE

ROXBOROUGH STREET E

MINERAL  
SHOPPERS DRUG MART  
DOG FATHER  
BLACK CAMEL

CRESCENT ROAD

**M** ROSEDALE SUBWAY STATION



YONGE STREET

# Advisory Team

Arlin Markowitz\*  
Executive Vice President  
416 815 2374  
arlin.markowitz@cbre.com

Alex Edmison\*  
Senior Vice President  
416 874 7266  
alex.edmison@cbre.com

Jackson Turner\*\*  
Vice President  
416 815 2394  
jackson.turner@cbre.com

Teddy Taggart\*  
Senior Sales Associate  
416 847 3254  
teddy.taggart@cbre.com

Emily Everett\*  
Sales Representative  
647 943 4185  
emily.everett@cbre.com

# CBRE

This disclaimer shall apply to CBRE Limited, and to all divisions of the Corporation ("CBRE").The information set out herein (the "Information") has not been verified by CBRE, and CBRE does not represent, warrant or guarantee the accuracy, correctness and completeness of the Information. CBRE does not accept or assume any responsibility or liability, direct or consequential, for the Information or the recipient's reliance upon the Information .The recipient of the Information should take such steps as the recipient may deem necessary to verify the Information prior to placing any reliance upon the Information. The Information may change and any property described in the Information may be withdrawn from the market at any time without notice or obligation to the recipient from CBRE.