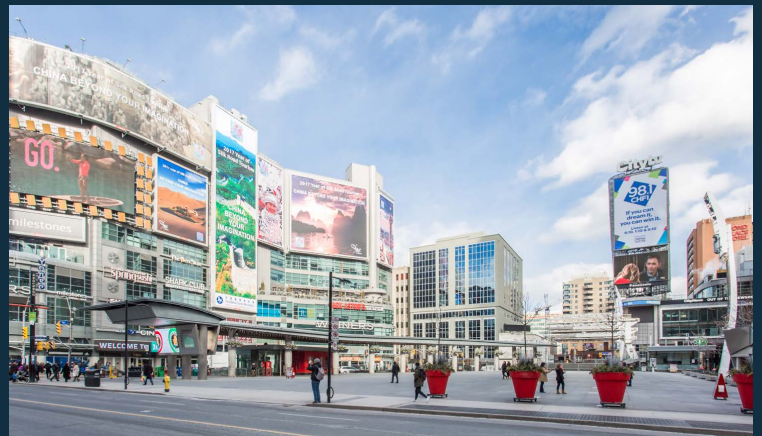


HIGH-PROFILE CORNER RETAIL FOR LEASE

21 DUNDAS SQUARE

FRONTING DUNDAS SQUARE IN DOWNTOWN TORONTO



CBRE urban retail team

PROPERTY DETAILS

Address: 21 Dundas Square, Toronto

Size: Unit 102: 1,590 sq. ft.
Unit 103: 2,071 sq. ft.

Net Rent: \$70.00 per sq. ft.

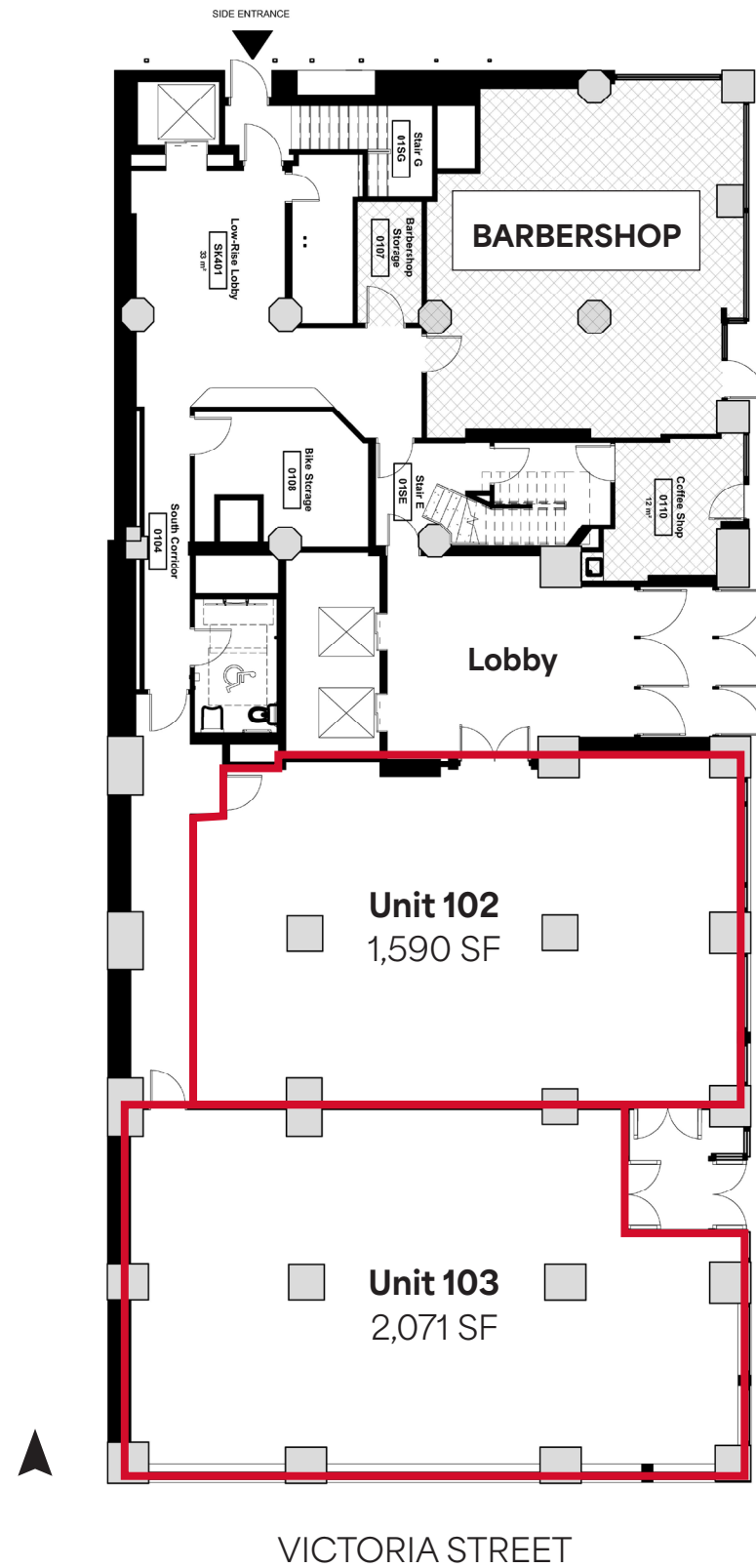
TMI: \$26.28 per sq. ft.

Available: Immediately

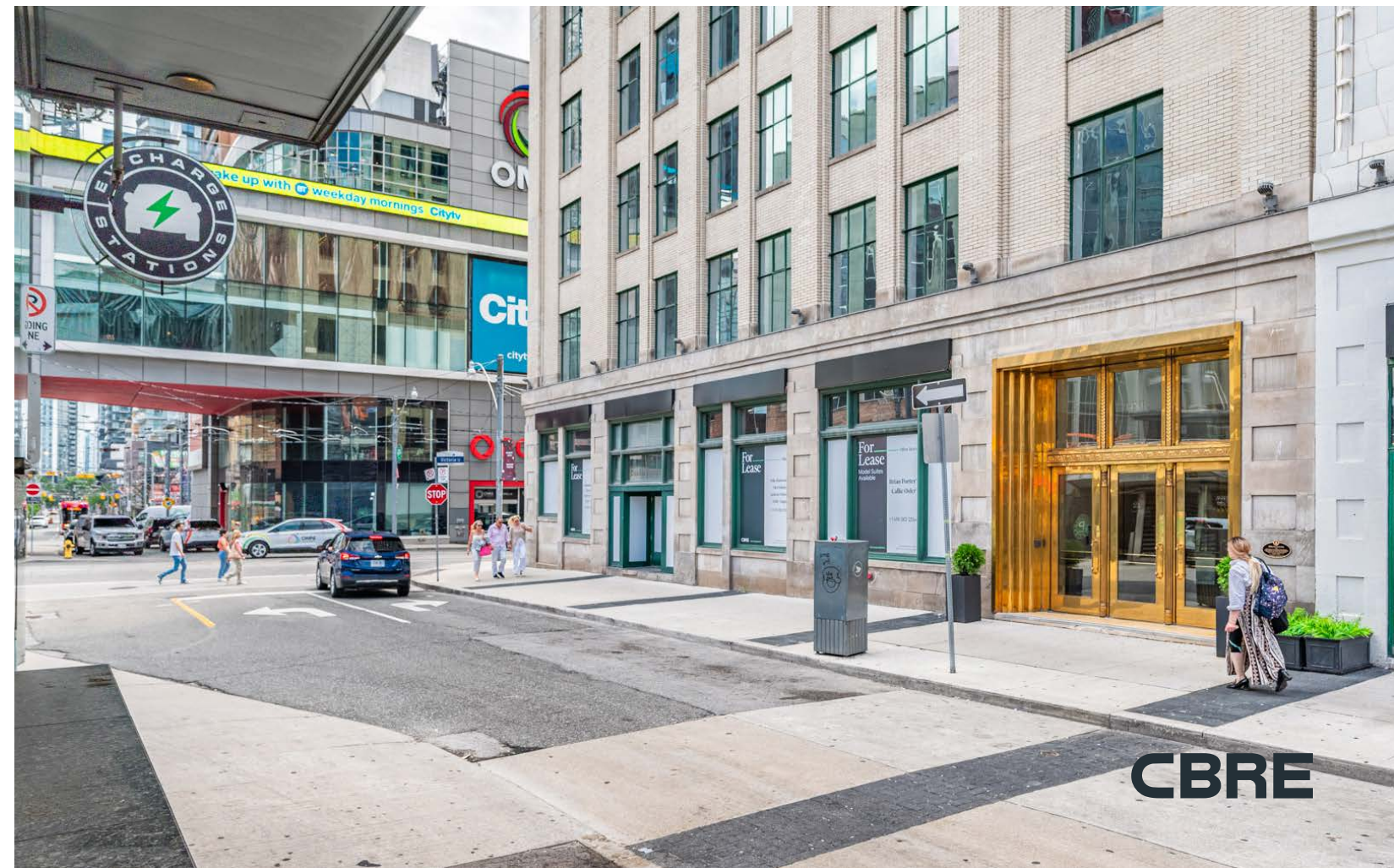
- Fronting onto Dundas Square, a popular tourist attraction and event space at the intersection of Yonge Street & Dundas Street (the busiest intersection in Canada)
- Entrance to a large Green P public parking lot directly across the street (253 spaces)
- Steps to the Eaton Centre, North America's busiest shopping mall and Toronto Metropolitan University
- Excellent transit connectivity, with easy access to Dundas subway station, Queen subway station and the Dundas and Queen streetcars and Queen streetcars



FLOOR PLAN



DUNDAS SQUARE



YONGE & DUNDAS STREETSCAPE

MUJI
無印良品

Foot Locker
Rogers

DUNDAS STREET WEST



Toronto Eaton Centre

- | | | |
|-------------|--------------|-----------------|
| Aesop | Harry Rosen | Reiss |
| Abercrombie | Kate Spade | Saje |
| Adidas | Keihl's | Sandro |
| Allsaints | Lacoste | Sephora |
| Apple | Levis | Sport Chek |
| Aritzia | Lululemon | Tumi |
| Aldo | MAC | TNA |
| Alo Yoga | Micheal Kors | Uniqlo |
| Bonlook | Oak & Fort | Wilfred |
| Club Monaco | OVO | Victoria Secret |
| Coach | Rudsak | Zara |
| Fossil | Roots | |

2 Queen West

QUEEN STREET WEST



Tokyo Smoke
Five Guys



Chipotle
Winners
SHAKE SHACK

Starbucks
Blaze Pizza

YONGE STREET



DUNDAS SQ.

Shoppers Drug Mart
Three Brewers
Popeye's
Ed Mirvish Theatre
Paramount
Urban Outfitters
Vans
Sweat and Tonic

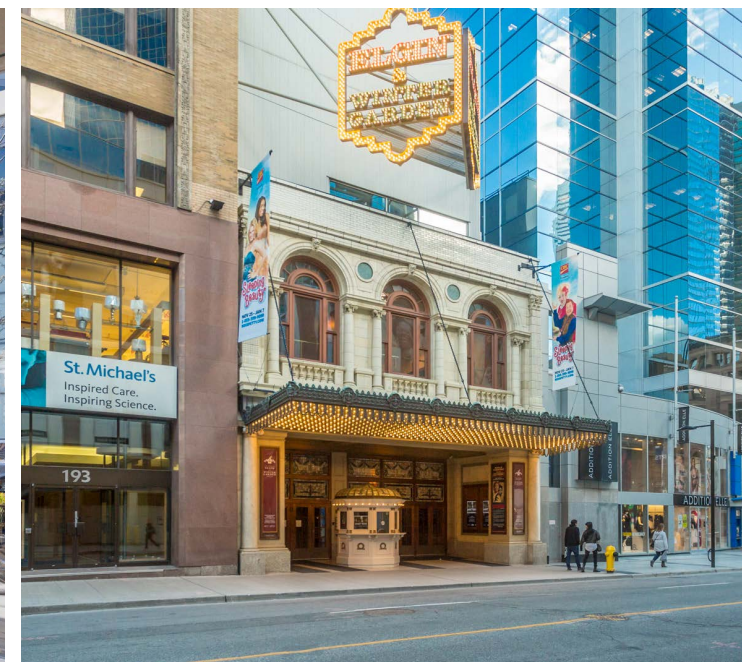
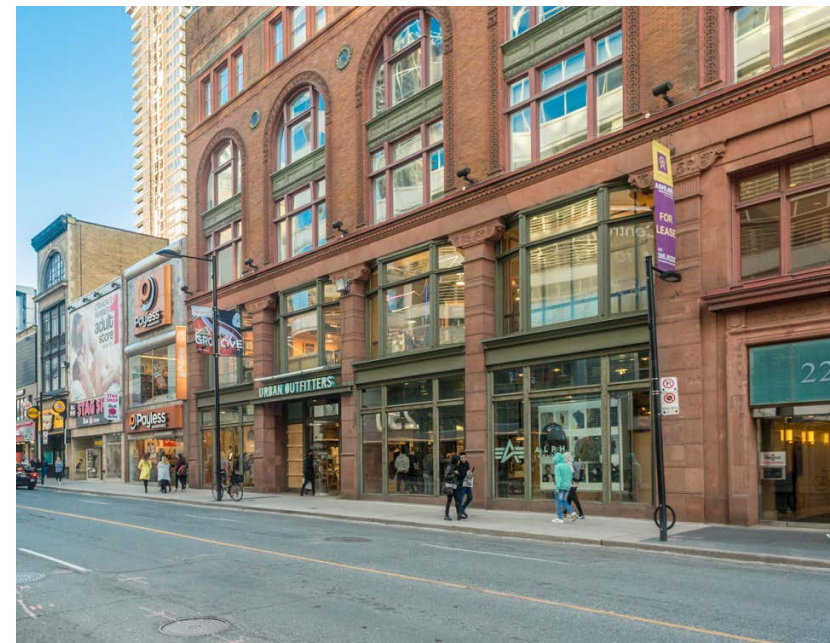
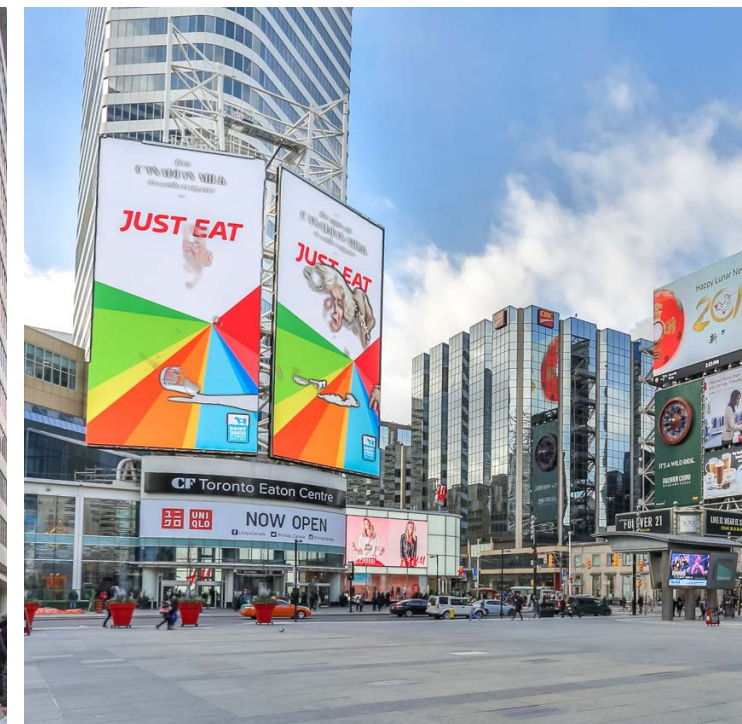
21 DUNDAS SQUARE

VICTORIA ST

SHUTER STREET

Tangerine Bank
Home Sense
Eglin Theatre
Salus Fresh Foods

CIBC
Rexall



EATON CENTRE

ST. MICHAELS
HOSPITAL

H&M

ED MIRVISH
THEATRE

YONGE &
DUNDAS SQUARE

21 DUNDAS
SQUARE

TORONTO
METROPOLITAN
UNIVERSITY

21 Dundas Square fronts onto Yonge-Dundas Square, a popular tourist attraction and event space at Canada's busiest intersection. The area is home to Toronto Metropolitan University, The Toronto Eaton Centre, a 24 multiplex theatre and numerous other entertainment and shopping venues.

The area contains over 7 million sq.ft. of office space, bringing over 41,000 people into the district each day. It is one of Toronto's most densely populated and fastest growing neighbourhoods, with approx. 130,000 residents within a 20 min walk.



CONTACT

ARLIN MARKOWITZ*
Executive Vice President
416 815 2374
arlin.markowitz@cbre.com

ALEX EDMISON*
Senior Vice President
416 874 7266
alex.edmison@cbre.com

JACKSON TURNER**
Senior Vice President
416 815 2394
jackson.turner@cbre.com

TEDDY TAGGART*
Vice President
416 847 3254
teddy.taggart@cbre.com

EMILY EVERETT*
Sales Associate
647 943 4185
emily.everett@cbre.com

*Sales Representative **Broker

CBRE urban retail team

This disclaimer shall apply to CBRE Limited, Real Estate Brokerage, and to all other divisions of the Corporation; to include all employees and independent contractors ("CBRE"). The information set out herein, including, without limitation, any projections, images, opinions, assumptions and estimates obtained from third parties (the "Information") has not been verified by CBRE, and CBRE does not represent, warrant or guarantee the accuracy, correctness and completeness of the Information. CBRE does not accept or assume any responsibility or liability, direct or consequential, for the Information or the recipient's reliance upon the Information. The recipient of the Information should take such steps as the recipient may deem necessary to verify the Information prior to placing any reliance upon the Information. The Information may change and any property described in the Information may be withdrawn from the market at any time without notice or obligation to the recipient from CBRE. CBRE and the CBRE logo are the service marks of CBRE Limited and/or its affiliated or related companies in other countries. All other marks displayed on this document are the property of their respective owners. All Rights Reserved.