

# 70 York *for lease*

RETAIL FOR LEASE AT YORK & WELLINGTON STREET | FINANCIAL CORE



**CBRE**



UNIT 1



UNIT 2



CBRE

# Retail for Lease

**ADDRESS:** 70 York Street, Toronto

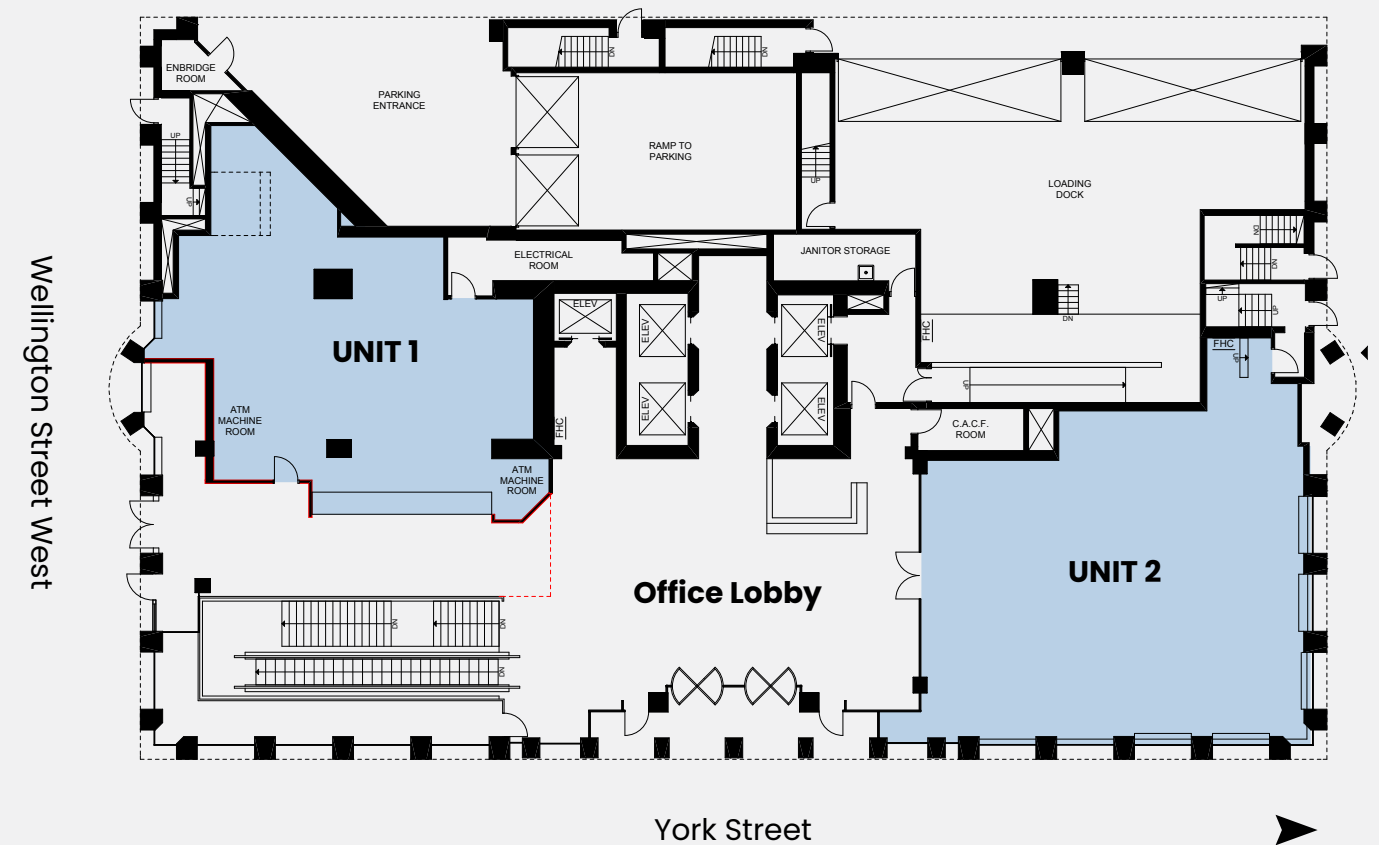
**SIZE:** Unit 1: 1,847 sq. ft. (Wellington St. frontage)  
Unit 2: 2,707 sq. ft. (York St. Frontage)

**NET RENT:** Please contact listing agents

**TMI:** \$24.25 per sq. ft.

**AVAILABLE:** Q1 2023

- Located on the ground level of a 17-storey Class A office building in heart of Toronto's Financial District
- Landlord undergoing massive renovation of the office lobby
- Directly connected to the PATH network
- Walking distance to many of Toronto's top tourist destinations and hotels including Scotiabank Arena, Fairmount Royal York, CN Tower, Ripley's Aquarium, The Ritz Carlton and the Rogers Centre
- Neighbouring retailers include Earls Kitchen + Bar, Beertown, Moxies and Modus
- Steps to Union Station, St. Andrew Station and the King streetcar









70 York  
*for lease*

SCOTIABANK ARENA

UNION STATION

FAIRMOUNT ROYAL  
YORK

ROY THOMPSON HALL

METRO CONVENTION  
CENTRE

RIPLEY'S AQUARIUM

GARDINER EXPRESSWAY

ROGERS CENTRE

QUEEN STREET WEST

KING STREET WEST



# Contact

Arlin Markowitz\*  
Executive Vice President  
416 815 2374  
arlin.markowitz@cbre.com

Alex Edmison\*  
Senior Vice President  
416 874 7266  
alex.edmison@cbre.com

Jackson Turner\*\*  
Vice President  
416 815 2394  
jackson.turner@cbre.com

Teddy Taggart\*  
Senior Sales Associate  
416 847 3254  
teddy.taggart@cbre.com

\*Sales Representative

\*\*Broker

## CBRE

This disclaimer shall apply to CBRE Limited, Real Estate Brokerage, and to all other divisions of the Corporation; to include all employees and independent contractors ("CBRE"). The information set out herein, including, without limitation, any projections, images, opinions, assumptions and estimates obtained from third parties (the "Information") has not been verified by CBRE, and CBRE does not represent, warrant or guarantee the accuracy, correctness and completeness of the Information. CBRE does not accept or assume any responsibility or liability, direct or consequential, for the Information or the recipient's reliance upon the Information. The recipient of the Information should take such steps as the recipient may deem necessary to verify the Information prior to placing any reliance upon the Information. The Information may change and any property described in the Information may be withdrawn from the market at any time without notice or obligation to the recipient from CBRE. CBRE and the CBRE logo are the service marks of CBRE Limited and/or its affiliated or related companies in other countries. All other marks displayed on this document are the property of their respective owners. All Rights Reserved.