

# 2464 YONGE

FOR LEASE AT YONGE + EGLINTON



NEWLY RENOVATED SECOND FLOOR SPACE



**CBRE**



# 2464 YONGE

## SECOND LEVEL FOR LEASE

### Property Details

**Size:** 4,583 sq. ft.

**Rent:** \$35.00 per sq. ft.

**TMI:** \$13.00 per sq. ft.

**Available:** Immediately

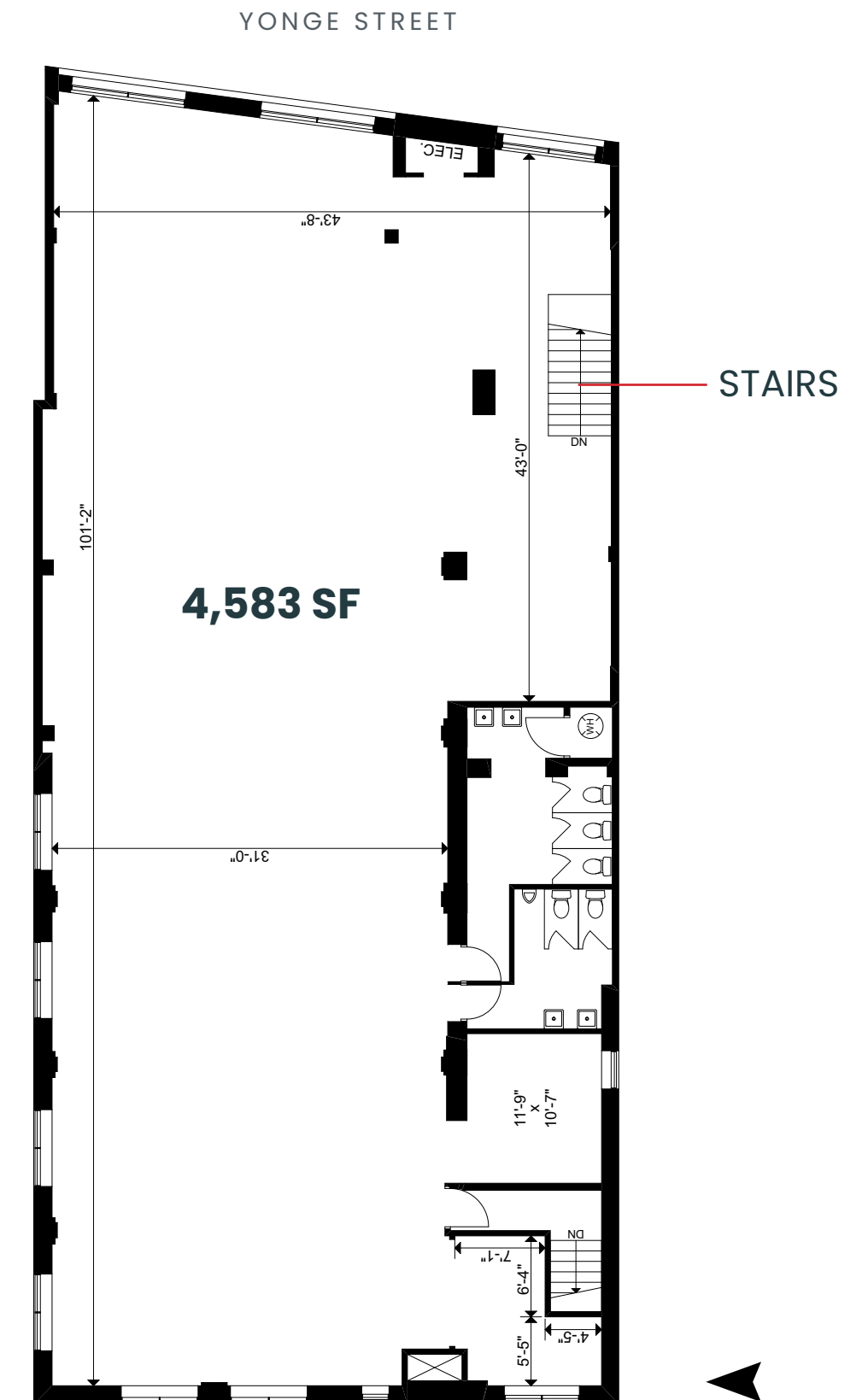
- Brand new space in an exceptional location in the Yonge & Eglinton neighbourhood
- Extra large windows with plenty of natural light
- Neighbouring retailers include Cibo, Starbucks, Village Juicery, The Ten Spot, BMO and TD Bank







## 2464 YONGE STREET | SECOND FLOOR









LYTTON BLVD

ROOTS

FUZZ WAXBAR

SAJE NATURAL WELLNESS

STARBUCKS

CRAIGHURST AVE

BAILEY NELSON

CIVELLO

BENEFIT BEAUTY BAR

CLUB MONACO

SECOND CUP COFFE CO.

ALBERTUS AVE

UNCLE BETTY'S

PET VALU

THE BAGEL HOUSE

LITTLE PARTY SHOP

BRIAR HILL AVE

LULULEMON

ST.CLEMENTS PARKETTE

ST. CLEMENTS AVE

CASALIFE

M FOR MENDOCINO

KIEHL'S

2464 YONGE

CASTLEFIELD AVE

CIBO WINE BAR

H&R BLOCK

ROSELAWN AVE

STOCK T.C.

HELENDAL AVE

WHITEHAUS CONDOS

RBC

ORCHARD VIEW BLVD

URBAN OUTFITTERS

INDIGO

CINEPLEX

REXALL

WINNERS

SEPHORA

YONGE EGLINTON CENTRE

EGLINTON AVENUE WEST

CIBC

BLYTHWOOD RD

SPORTING LIFE

THE CAPTAINS BOIL

MILKCOW CAFE

RUNNING ROOM

A&W

SHELDRAKE BLVD

TIM HORTON'S

L'OCCITANE

AESOP

TOKYO SMOKE

BEST SEASON

SHERWOOD AVE

GREENHOUSE JUICE

BYBLOS UPTOWN

SUETABLES

KEEWATIN AVENUE

OLLIE QUINN

THE TEN SPOT

TD BANK

ERSKINE AVENUE

STARBUCKS

WINE RACK

FRESHII

DAVID'S TEA

BROADWAY AVENUE

TIM HORTONS

THE SHOE COMPANY

SHOPPERS DRUG MART

CHIPOTLE

ROEHAMPTON AVENUE

PARAMOUNT

MAD RADISH

TD BANK

EGLINTON AVENUE EAST

BMO



# the neighbourhood

Yonge and Eglinton is a popular midtown hub for young professionals and families. It is home to plenty of bars, restaurants, boutiques and national retailers.

The area is surrounded by some of the most affluent residential neighbourhoods in Toronto. Developers continue to build in and around the streets that surround Yonge & Eglinton, adding density to any already bustling well-established community.

# shop

Yonge and Eglinton is one of the best shopping nodes within Toronto. People are drawn from neighbouring areas and from all over the city to shop at retailers such as Club Monaco, Aesop, Sephora, Urban Outfitters, Indigo, Swarovski, Lululemon, Benefit Cosmetics Boutique and Kiehl's.

# eat & drink

Some of Toronto's best restaurants and bars are found at Yonge & Eglinton. Little Sister, Stock T.C., TabÜlè, Fresh, Bar Buca, PAI, Byblos Uptown and The Keg are just a few of the popular restaurants in the neighbourhood.

# Advisory Team

Arlin Markowitz\*  
Executive Vice President  
416 815 2374  
arlin.markowitz@cbre.com

Alex Edmison\*  
Senior Vice President  
416 874 7266  
alex.edmison@cbre.com

Jackson Turner\*\*  
Vice President  
416 815 2394  
jackson.turner@cbre.com

Teddy Taggart\*  
Associate Vice President  
416 847 3254  
teddy.taggart@cbre.com

Emily Everett  
Sales Representative  
647 943 4185  
emily.everett@cbre.com

\*Sales Representative

\*\*Broker

Website at [www.urbanretailtoronto.com](http://www.urbanretailtoronto.com)

Instagram: @urbanretailteamto

**CBRE**

This disclaimer shall apply to CBRE Limited, Real Estate Brokerage, and to all other divisions of the Corporation; to include all employees and independent contractors ("CBRE"). The information set out herein, including, without limitation, any projections, images, opinions, assumptions and estimates obtained from third parties (the "Information") has not been verified by CBRE, and CBRE does not represent, warrant or guarantee the accuracy, correctness and completeness of the Information. CBRE does not accept or assume any responsibility or liability, direct or consequential, for the Information or the recipient's reliance upon the Information. The recipient of the Information should take such steps as the recipient may deem necessary to verify the Information prior to placing any reliance upon the Information. The Information may change and any property described in the Information may be withdrawn from the market at any time without notice or obligation to the recipient from CBRE. CBRE and the CBRE logo are the service marks of CBRE Limited and/or its affiliated or related companies in other countries. All other marks displayed on this document are the property of their respective owners. All Rights Reserved.