

2464
YONGE

FOR LEASE AT YONGE + EGLINTON



NEWLY RENOVATED SECOND FLOOR SPACE



CBRE



2464

YONGE

SECOND LEVEL FOR LEASE

Property Details

Size: 4,657 sq. ft.

Net Rent: \$34.00 per sq. ft.

TMI: \$13.00 per sq. ft.

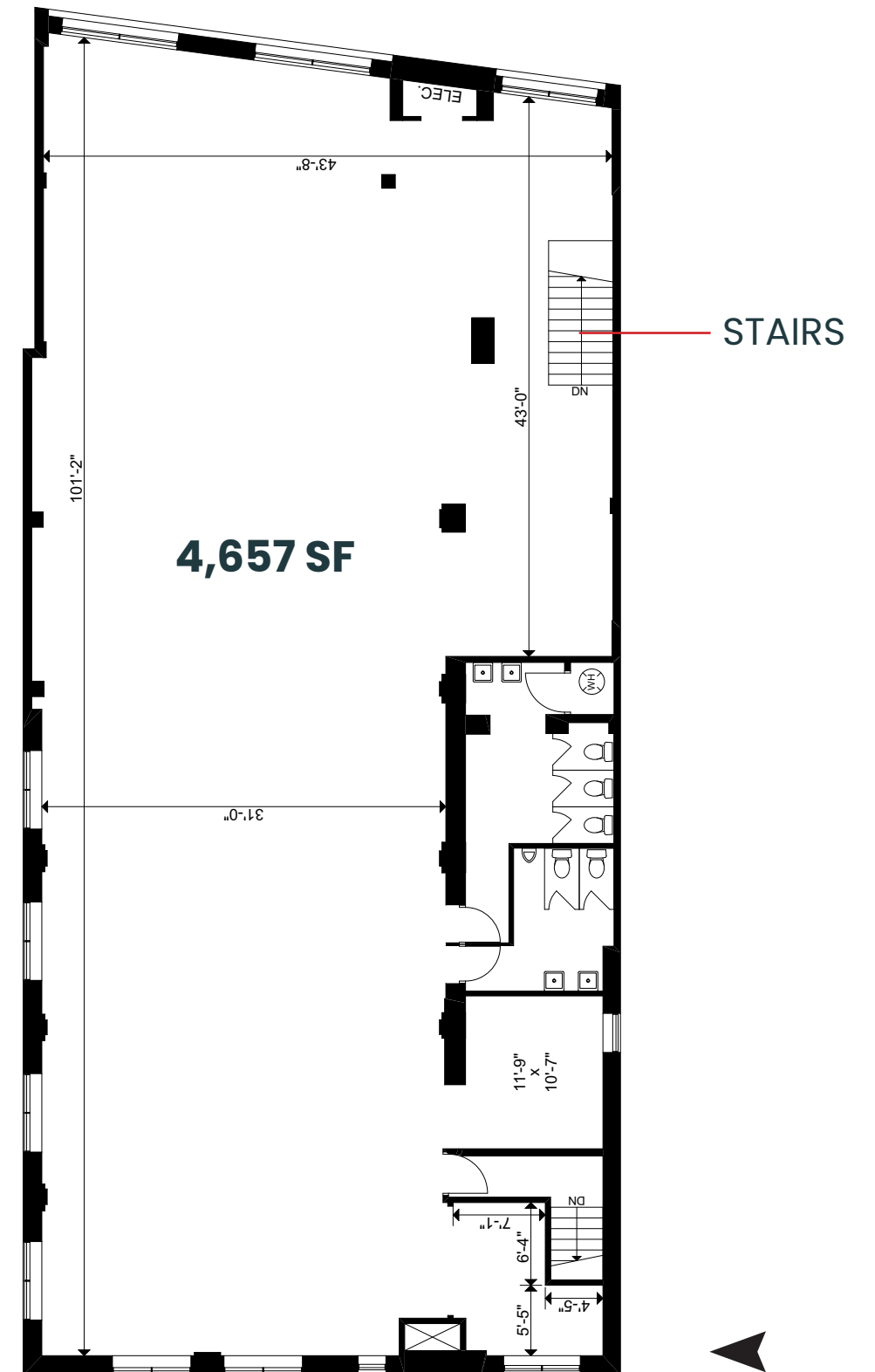
Available: Immediately

- Brand new space in an exceptional location in the Yonge & Eglinton neighbourhood
- Dedicated ground level vestibule
- Extra large windows with plenty of natural light
- Neighbouring retailers include Cibo, Starbucks, Village Juicery, The Ten Spot, BMO and TD Bank

2464 YONGE STREET | SECOND FLOOR



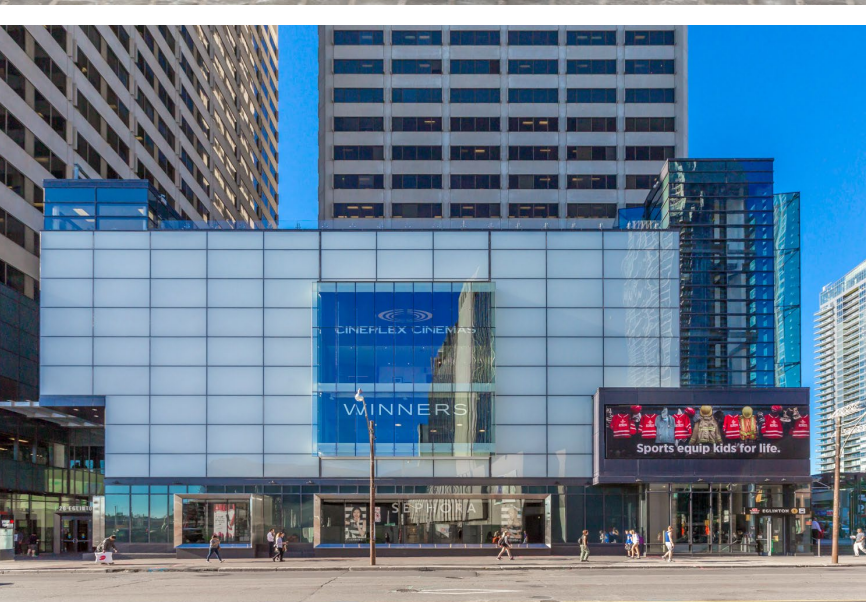
YONGE STREET





LYTTON BLVD	ROOTS FUZZ WAXBAR SAJE NATURAL WELLNESS STARBUCKS
CRAIGHURST AVE	BAILEY NELSON CIVELLO BENEFIT BEAUTY BAR CLUB MONACO SECOND CUP COFFE CO.
ALBERTUS AVE	UNCLE BETTY'S PET VALU THE BAGEL HOUSE LITTLE PARTY SHOP
BRIAR HILL AVE	LULULEMON
ST. CLEMENTS AVE	ST.CLEMENTS PARKETTE CASALIFE M FOR MENDOCINO KIEHL'S
CASTLEFIELD AVE	CIBO WINE BAR H&R BLOCK
ROSELAWN AVE	STOCK T.C.
HELENDALE AVE	WHITEHAUS CONDOS RBC
ORCHARD VIEW BLVD	URBAN OUTFITTERS INDIGO CINEPLEX REXALL WINNERS SEPHORA
YONGE EGLINTON CENTRE	
EGLINTON AVENUE WEST	CIBC

BLYTHWOOD RD	SPORTING LIFE THE CAPTAINS BOIL MILKCOW CAFE RUNNING ROOM A&W
SHELDRAKE BLVD	TIM HORTON'S L'OCCITANE AESOP TOKYO SMOKE BEST SEASON
SHERWOOD AVE	GREENHOUSE JUICE BYBLOS UPTOWN SUETABLES
KEEWATIN AVENUE	OLLIE QUINN THE TEN SPOT TD BANK
ERSKINE AVENUE	STARBUCKS WINE RACK FRESHII DAVID'S TEA
BROADWAY AVENUE	TIM HORTONS THE SHOE COMPANY SHOPPERS DRUG MART CHIPOTLE
ROEHAMPTON AVENUE	PARAMOUNT MAD RADISH TD BANK
EGLINTON AVENUE EAST	BMO



the neighbourhood

Yonge and Eglinton is a popular midtown hub for young professionals and families. It is home to plenty of bars, restaurants, boutiques and national retailers.

The area is surrounded by some of the most affluent residential neighbourhoods in Toronto. Developers continue to build in and around the streets that surround Yonge & Eglinton, adding density to any already bustling well-established community.

shop

Yonge and Eglinton is one of the best shopping nodes within Toronto. People are drawn from neighbouring areas and from all over the city to shop at retailers such as Club Monaco, Aesop, Sephora, Urban Outfitters, Indigo, Swarovski, Lululemon, Benefit Cosmetics Boutique and Kiehl's.

eat & drink

Some of Toronto's best restaurants and bars are found at Yonge & Eglinton. Little Sister, Stock T.C., Tabùlè, Fresh, Bar Buca, PAI, Byblos Uptown and The Keg are just a few of the popular restaurants in the neighbourhood.

Advisory Team

Arlin Markowitz*
Executive Vice President
416 815 2374
arlin.markowitz@cbre.com

Alex Edmison*
Senior Vice President
416 874 7266
alex.edmison@cbre.com

Jackson Turner**
Vice President
416 815 2394
jackson.turner@cbre.com

Teddy Taggart*
Associate Vice President
416 847 3254
teddy.taggart@cbre.com

Emily Everett
Sales Representative
647 943 4185
emily.everett@cbre.com

*Sales Representative

**Broker

Website at www.urbanretailtoronto.com

Instagram: [@urbanretailteamto](https://www.instagram.com/urbanretailteamto)

CBRE

This disclaimer shall apply to CBRE Limited, Real Estate Brokerage, and to all other divisions of the Corporation; to include all employees and independent contractors ("CBRE"). The information set out herein, including, without limitation, any projections, images, opinions, assumptions and estimates obtained from third parties (the "Information") has not been verified by CBRE, and CBRE does not represent, warrant or guarantee the accuracy, correctness and completeness of the Information. CBRE does not accept or assume any responsibility or liability, direct or consequential, for the Information or the recipient's reliance upon the Information. The recipient of the Information should take such steps as the recipient may deem necessary to verify the Information prior to placing any reliance upon the Information. The Information may change and any property described in the Information may be withdrawn from the market at any time without notice or obligation to the recipient from CBRE. CBRE and the CBRE logo are the service marks of CBRE Limited and/or its affiliated or related companies in other countries. All other marks displayed on this document are the property of their respective owners. All Rights Reserved.