

501 *Yonge*

AN ENTIRE CITY BLOCK FOR LEASE
ON YONGE BETWEEN COLLEGE & WELLESLEY



CBRE

LANTERRA
DEVELOPMENTS

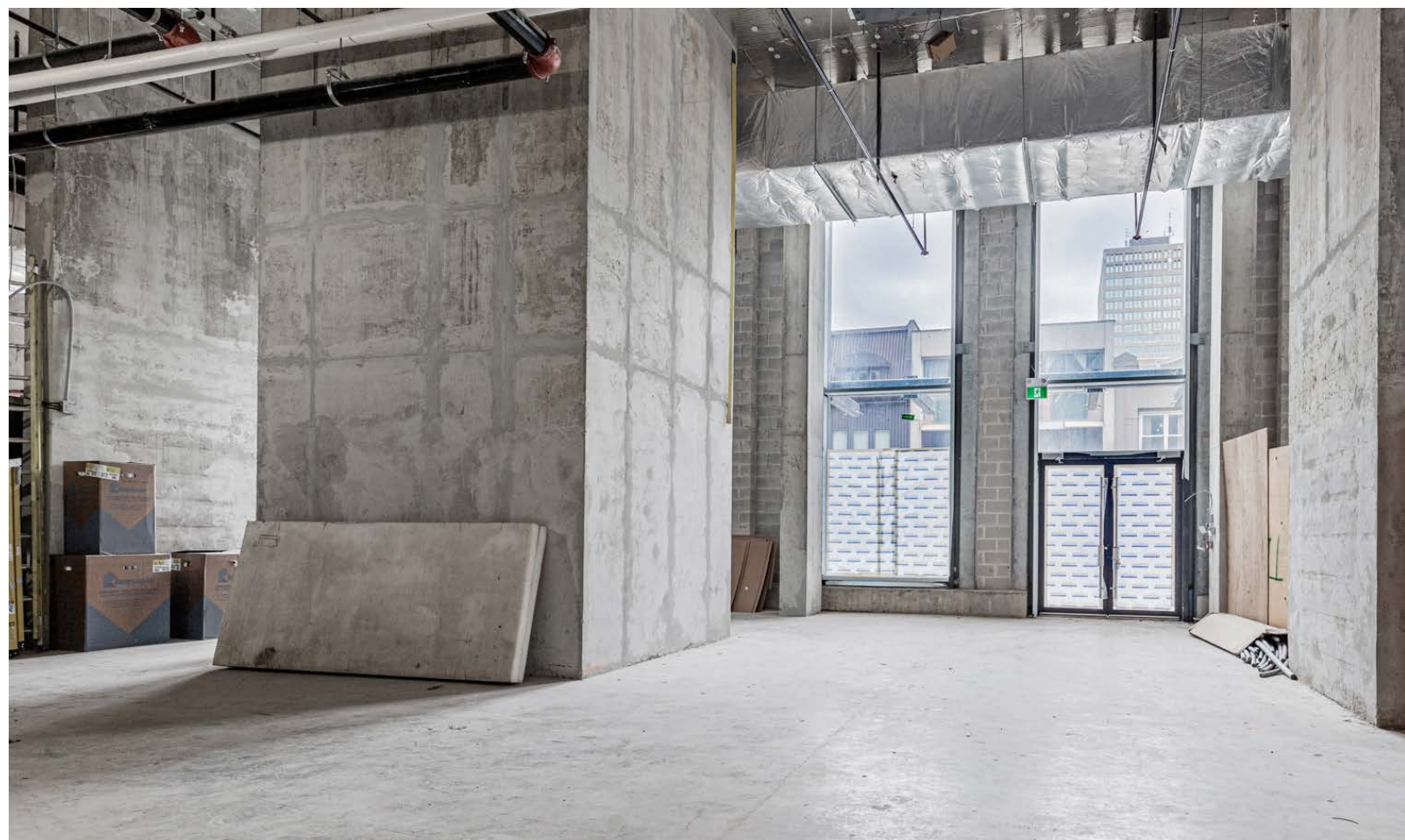
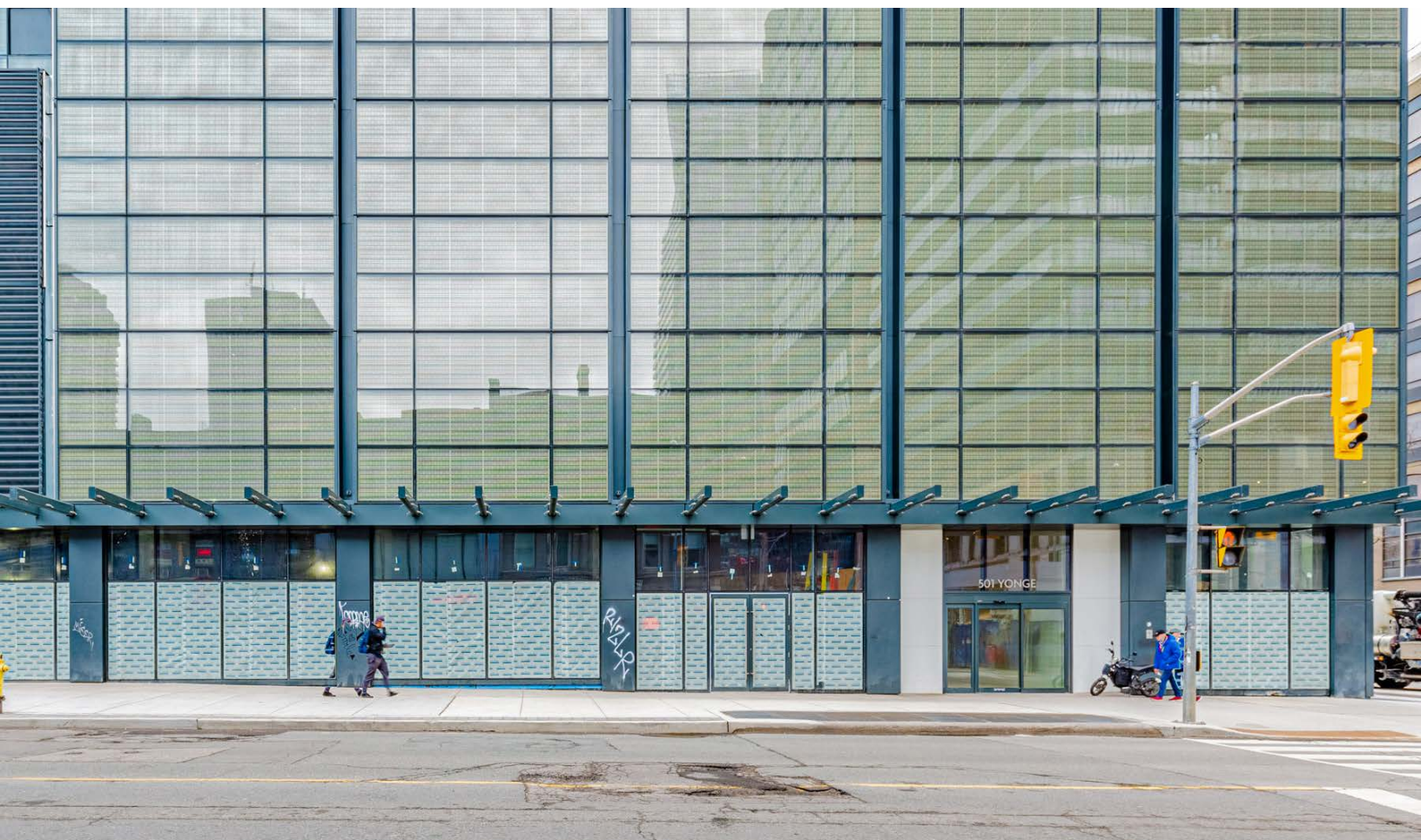
501 Yonge

Address:	501 Yonge Street, Toronto
Size:	2,094 sq. ft. - <i>Last remaining unit!</i>
Net Rent:	Please contact listing agents
TMI:	TBD
Available:	Immediately

- The property is anchored by a 15,000 SF Fit 4 Less gym as well as other exciting tenants including Me Va Me Kitchen, INS Market and Japadog
- Incredible frontage, high ceiling and excellent branding opportunity
- Located below two towers (52/25 stories) and 608 fully sold residential units

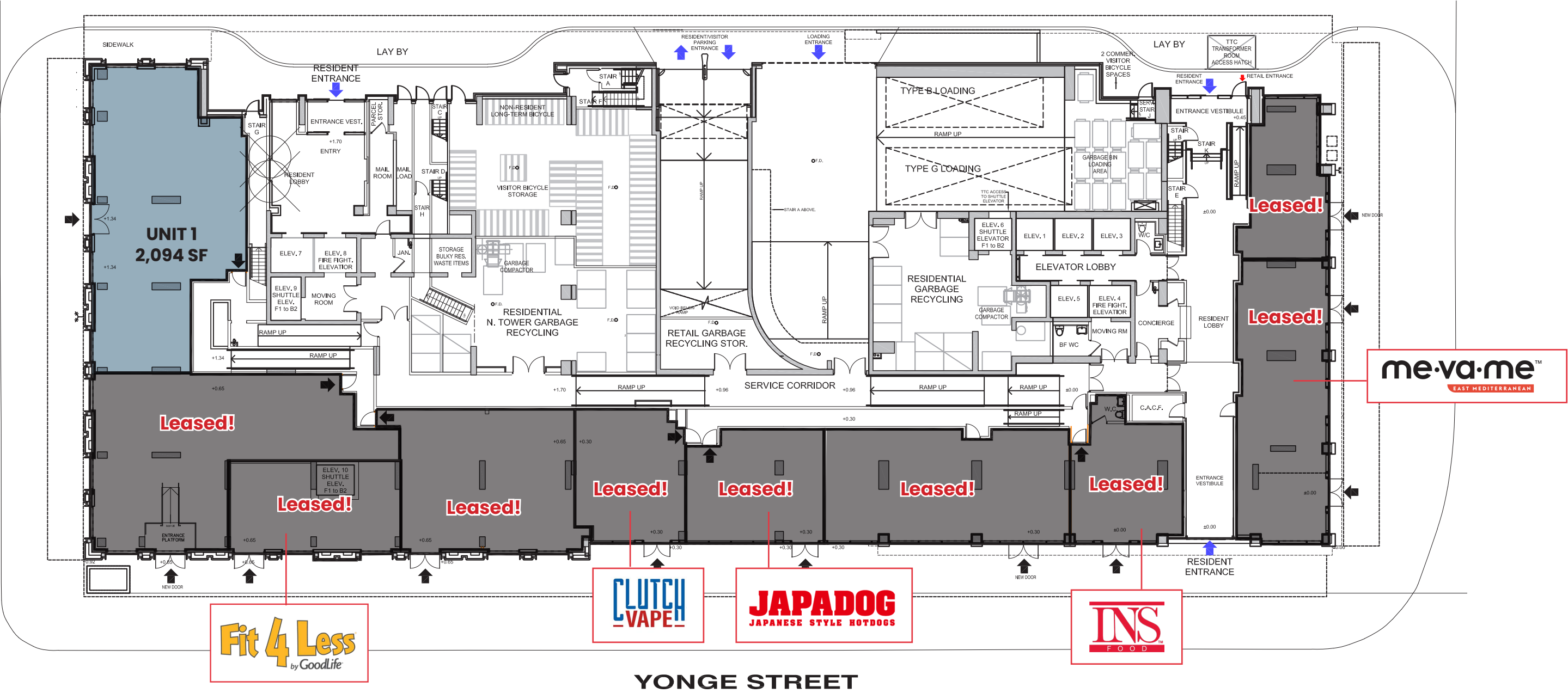


CBRE



Ground Floor Plan

MAITLAND STREET



YONGE STREET

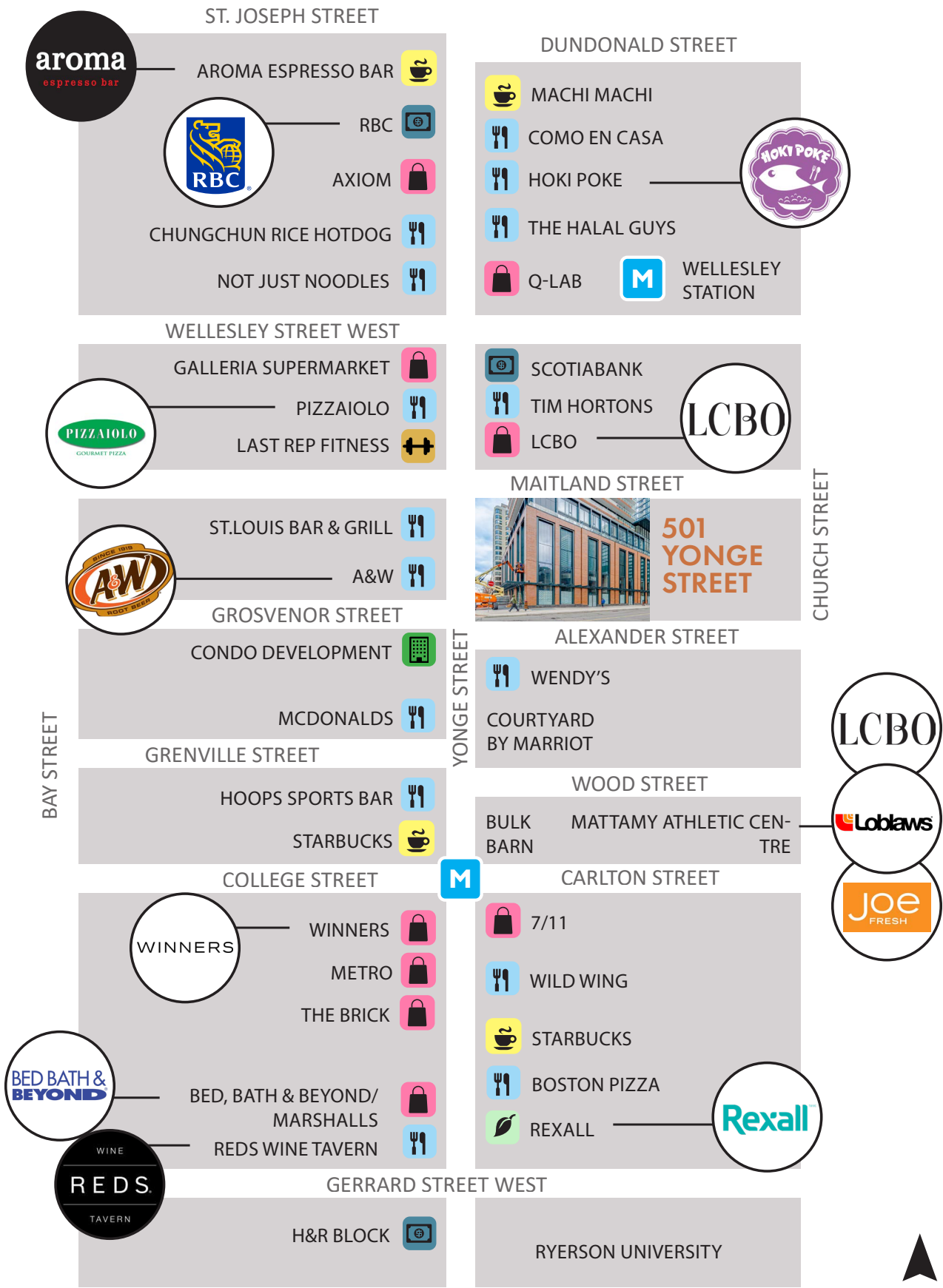
The Location

Downtown Yonge

501 Yonge Street is centrally located in Downtown Yonge, the heart of Toronto’s tourist, retail and entertainment scene. It has incredible frontage on Yonge Street, spanning an entire city block between Maitland Street and Alexander Street. The site is well connected, with a one minute walk to both Wellesley and College subway stations as well as the 506 College streetcar line.

The site benefits from its proximity to Yonge-Dundas Square and The Eaton Centre, two of the city’s most popular tourist destinations. Yonge-Dundas Square is often compared to Times Square, drawing nearly 60 million visitors each year. The intersection is home to a large outdoor public square, a 24 multiplex theatre and the Eaton Centre, North America’s busiest mall.

Downtown Yonge is experiencing exponential growth, with the development of a number of high-rise condominiums. There are over 17,000 new residential units under construction/proposed along the Yonge Street corridor between Dundas Street and Bloor Street. Notable condominium developments include IMMIX Condos (451 units), currently under construction across the street from 501 Yonge, and 475 Yonge, a proposed condominium just north of the property, bringing in an additional 1,611 condo units to the immediate area.

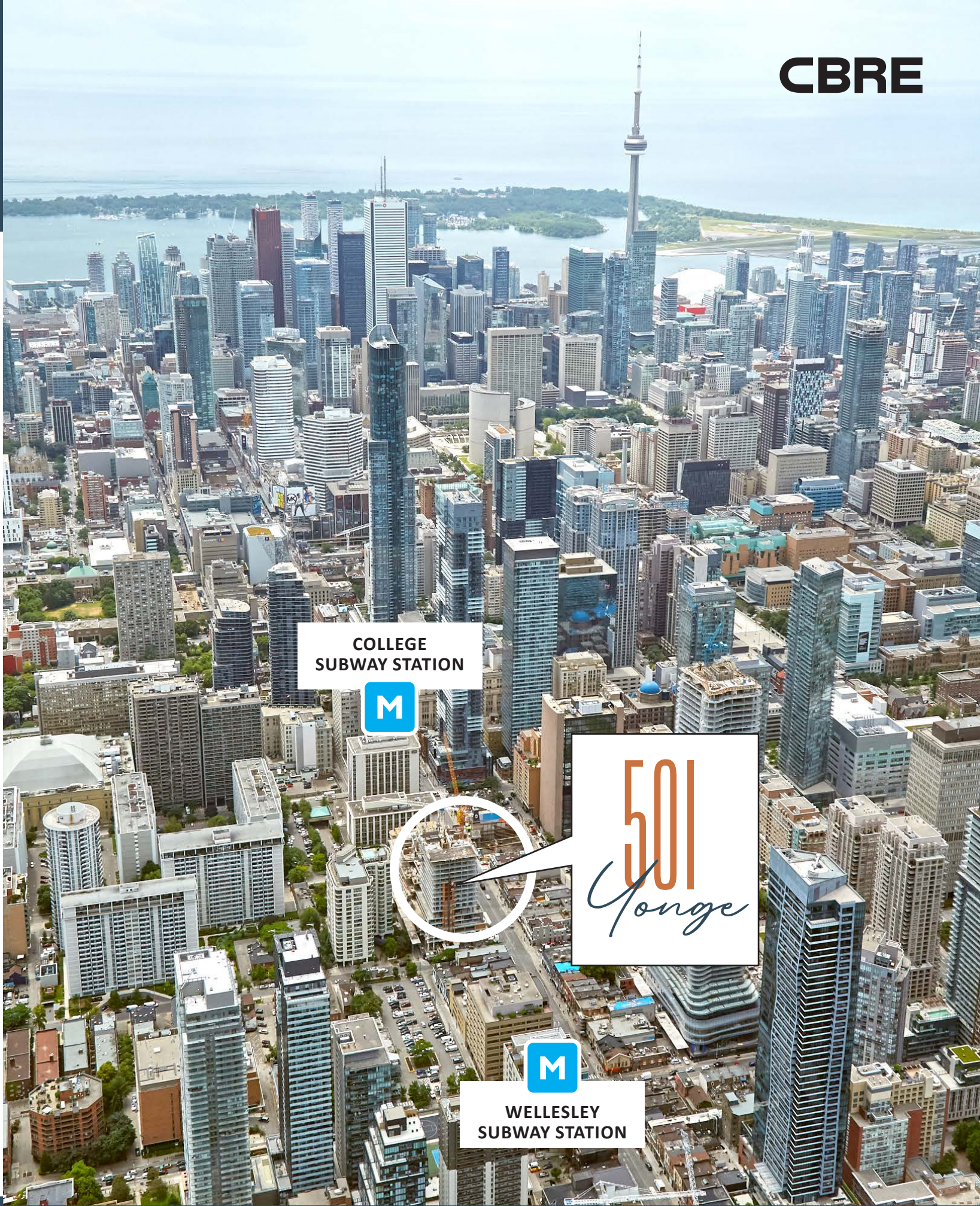


Area Developments

Over 17,000 new units



	Address/ Name	# of Units	Status
1	The One	505	Construction
2	15 Charles	549	Pre-Construction
3	10 St. Mary	465	Pre-Construction
4	55 Charles	665	Construction
5	The Charles	428	Construction
6	625 Church	656	Pre-Construction
7	619 Yonge	606	Pre-Construction
8	The Ivy	232	Construction
9	The Gloucester	528	Construction
10	25 St. Mary	1143	Pre-Construction
11	1075 Bay	540	Pre-Construction
12	8 Wellesley	600	Construction
13	20 Maitland	502	Pre-Construction
14	510 Yonge	500	Pre-Construction
15	Panda	555	Construction
16	IMMIX Condos	451	Construction
17	475 Yonge	1611	Pre-Construction
18	2 Carlton	990	Pre-Construction
19	415 Yonge	471	Pre-Construction
20	372 Yonge	415	Pre-Construction
21	Chelsea Green	2109	Pre-Construction
22	Concord Sky	1106	Construction
23	8 Elm	819	Pre-Construction
24	335 Yonge	165	Pre-Construction
	Panda	555	Construction
★	Teahouse	608	Construction
TOTAL		17,219	





For More Information, Please Contact:

ARLIN MARKOWITZ*
Executive Vice President
416 815 2374
arlin.markowitz@cbre.com

ALEX EDMISON*
Senior Vice President
416 874 7266
alex.edmison@cbre.com

JACKSON TURNER**
Senior Vice President
416 815 2394
jackson.turner@cbre.com

TEDDY TAGGART*
Vice President
416 847 3254
teddy.taggart@cbre.com

EMILY EVERETT
Sales Representative
647 943 4185
emily.everett@cbre.com

*Sales Representative

**Broker



This disclaimer shall apply to CBRE Limited, and to all divisions of the Corporation ("CBRE"). The information set out herein (the "Information") has not been verified by CBRE, and CBRE does not represent, warrant or guarantee the accuracy, correctness and completeness of the Information. CBRE does not accept or assume any responsibility or liability, direct or consequential, for the Information or the recipient's reliance upon the Information. The recipient of the Information should take such steps as the recipient may deem necessary to verify the Information prior to placing any reliance upon the Information. The Information may change and any property described in the Information may be withdrawn from the market at any time without notice or obligation to the recipient from CBRE.