

453
Eglinton
RETAIL FOR LEASE



FULLY FIXTURED RESTAURANT SPACE FOR LEASE

Details

Size: 2,859 sq. ft.

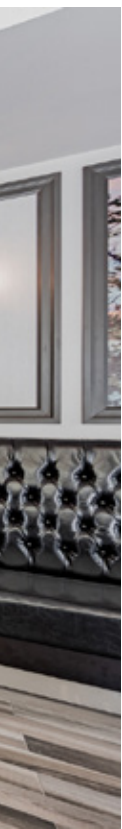
Rent: \$35.00 per sq. ft.

TMI: \$22.40 per sq. ft.

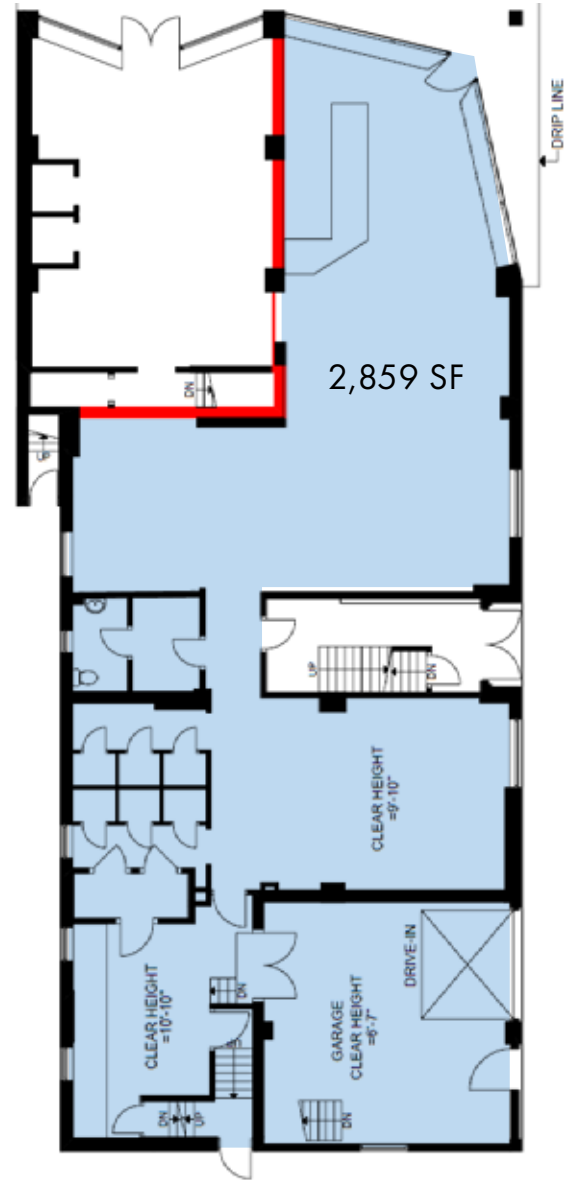
Available: Immediate

- Comments:
- Prime corner location on Eglinton Avenue West
 - One parking space included
 - Landlord in possession of liquor license (73 capacity indoor)
 - Fully fixtured restaurant space
 - Strong pedestrian and vehicular traffic
 - Strong co-tenancies





EGLINTON AVE WEST



DUNCANNON DRIVE

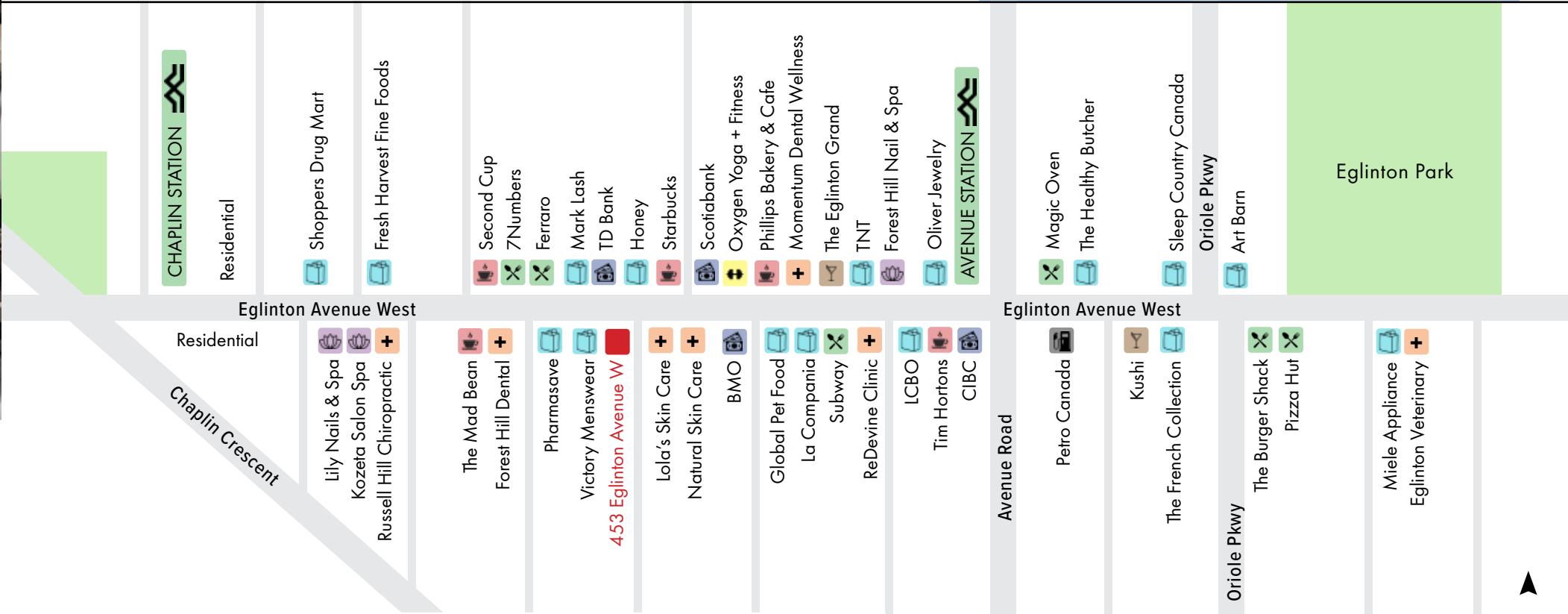


CBRE

FULLY FIXTURED KITCHEN



Eglinton West Streetscape



Future Eglinton Crosstown Light Rail Transit (LRT)

453 Eglinton Avenue West is ideally located within walking distance to two future Crosstown Light Rail Transit (LRT) stations. The LRT, expected to be completed in September of 2022, is a new rapid transit system with 25 stops running east-west along Eglinton. The system will link to 54 TTC bus routes, three TTC subway stations (Kennedy, Eglinton and Cedarvale) and 3 GO stations (Mount Dennis, Caledonia and Kennedy).

For more information
CONTACT

ARLIN MARKOWITZ*
Executive Vice President
416 815 2374
arlin.markowitz@cbre.com

ALEX EDMISON*
Senior Vice President
416 874 7266
alex.edmison@cbre.com

JACKSON TURNER**
Vice President
416 815 2394
jackson.turner@cbre.com

TEDDY TAGGART*
Associate Vice President
416 847 3254
teddy.taggart@cbre.com

*Sales Representative **Broker

CBRE

This disclaimer shall apply to CBRE Limited, Real Estate Brokerage, and to all other divisions of the Corporation; to include all employees and independent contractors ("CBRE"). The information set out herein, including, without limitation, any projections, images, opinions, assumptions and estimates obtained from third parties (the "Information") has not been verified by CBRE, and CBRE does not represent, warrant or guarantee the accuracy, correctness and completeness of the Information. CBRE does not accept or assume any responsibility or liability, direct or consequential, for the Information or the recipient's reliance upon the Information. The recipient of the Information should take such steps as the recipient may deem necessary to verify the Information prior to placing any reliance upon the Information. The Information may change and any property described in the Information may be withdrawn from the market at any time without notice or obligation to the recipient from CBRE. CBRE and the CBRE logo are the service marks of CBRE Limited and/or its affiliated or related companies in other countries. All other marks displayed on this document are the property of their respective owners. All Rights Reserved.