

2485^A YONGE

555 sq. ft. of Retail for Lease at Yonge & Eglinton



CBRE

Property Details

Size: 555 sq. ft. + 437 sq. ft. basement

Net Rent: \$4,440/month

TMI: \$1,850/month

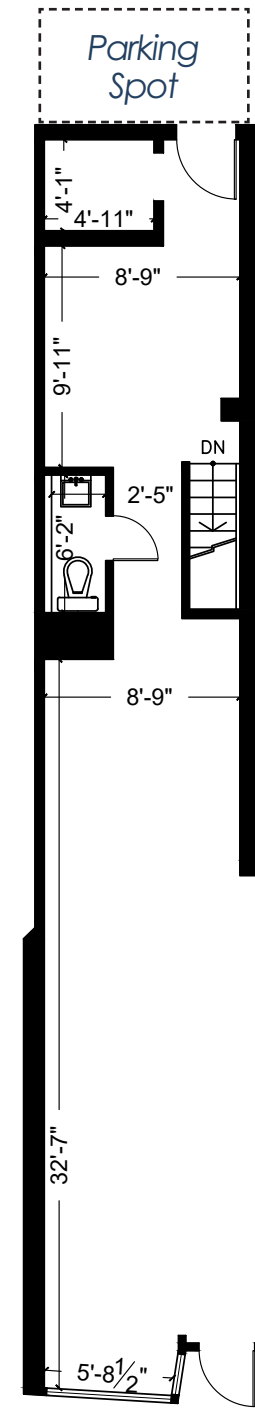
Available: Immediately

- Rare opportunity to secure small ground level space in the Yonge & Eglinton node
- Commercial parking lot behind the property
- Suitable for a variety of retail uses
- Neighbouring tenants include De Mello Coffee, Ollie Quinn, Pure + Simple, Cibo Wine Bar, BlackToe Running, Starbucks and more

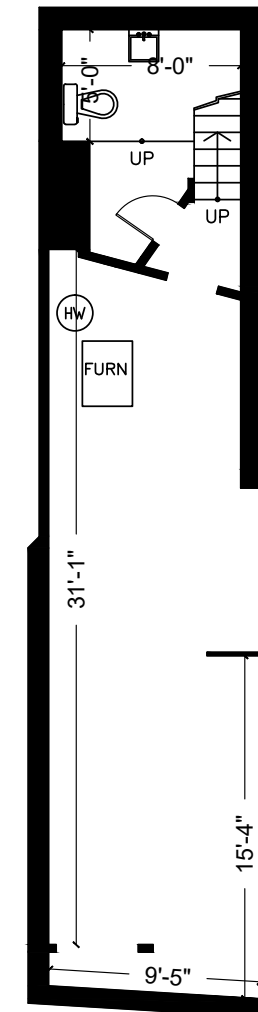


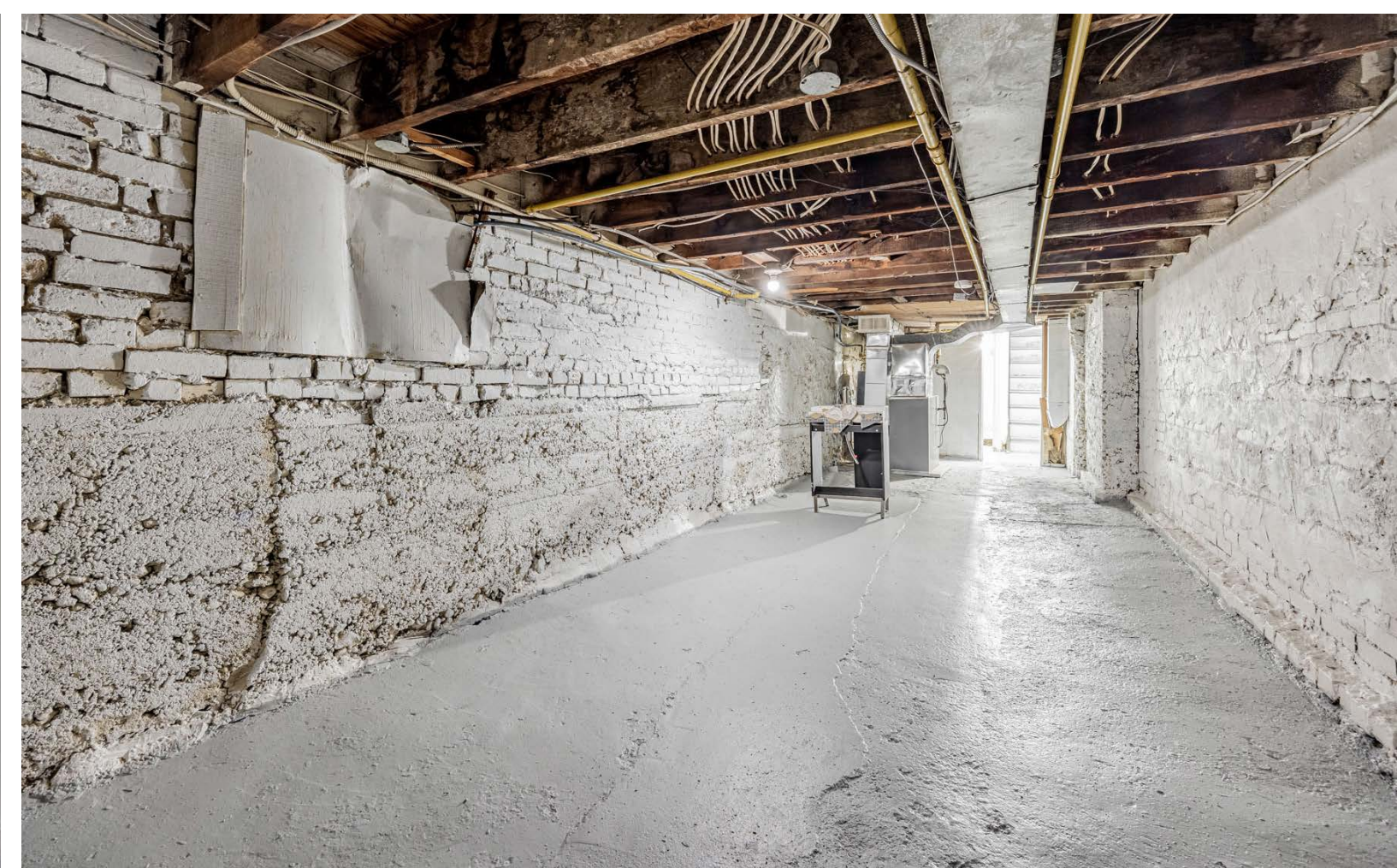
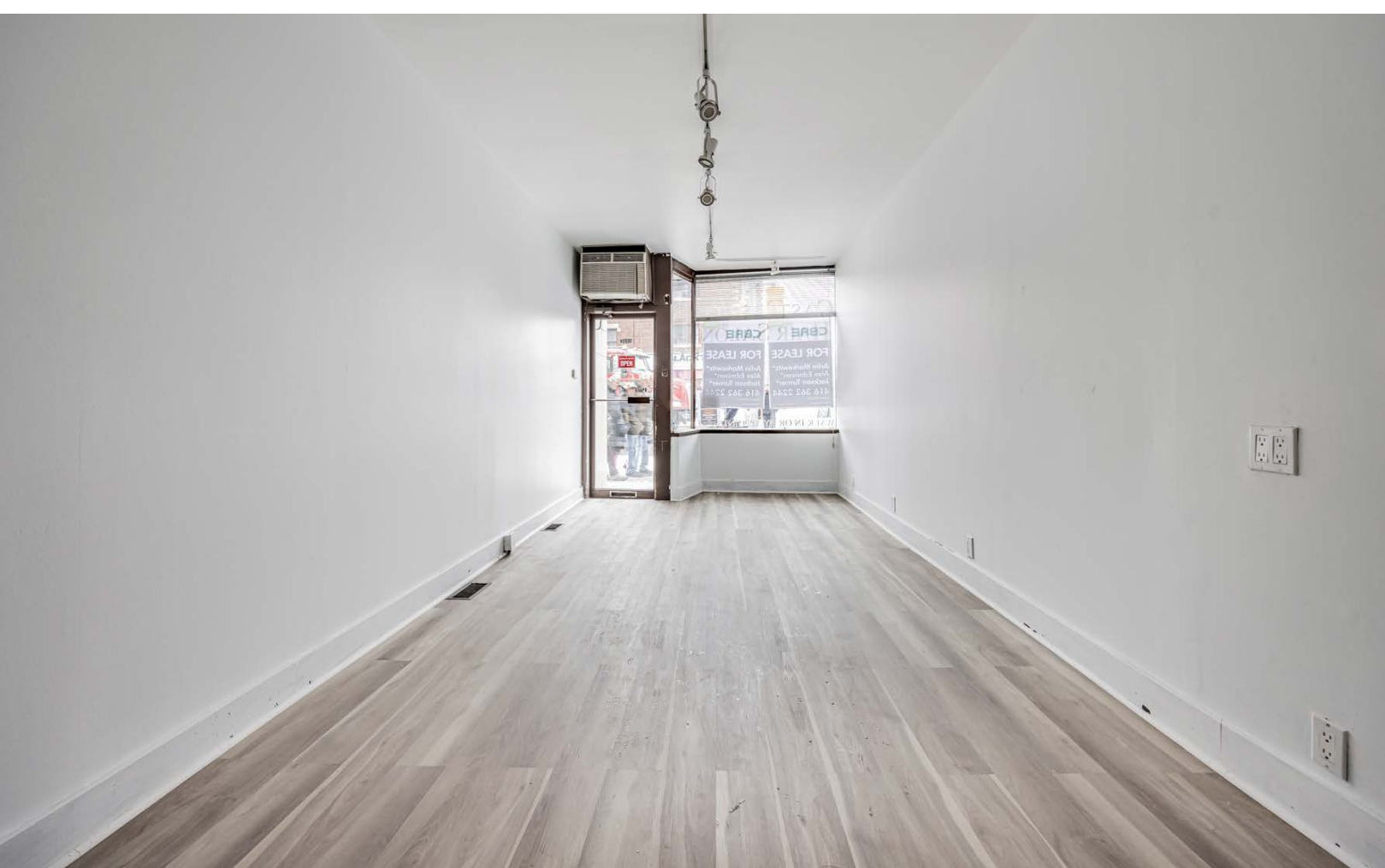
floor plans

Ground
555 SF



Basement
437F





the neighbourhood

Yonge and Eglinton is a popular midtown hub for young professionals and families. It is home to plenty of bars, restaurants, boutiques and national retailers.

The area is surrounded by some of the most affluent residential neighbourhoods in Toronto. Developers continue to build in and around the streets that surround Yonge & Eglinton, adding density to any already bustling well-established community.

shop

Yonge and Eglinton is one of the best shopping nodes within Toronto. People are drawn from neighbouring areas and from all over the city to shop at retailers such as Club Monaco, Aesop, Sephora, Urban Outfitters, Indigo, Swarovski, Lululemon and Benefit Cosmetics Boutique.

eat & drink

Some of Toronto's best restaurants and bars are found at Yonge & Eglinton. Little Sister, Stock T.C., Tabùlè, Fresh, Bar Buca, PAI, Byblos Uptown and The Keg are just a few of the popular restaurants in the neighbourhood.



- Pure + Simple
- CosMax Aesthetics
- Gina's Home
- Camden Market Butcher Shop
- Condo Development

CASTLEFIELD AVENUE

- BlackToe Running
- Tzatz
- Cibo Wine Bar
- Capitol Dentistry
- H&R Block

BMO

ROSELAWN AVENUE

- The Dressing Room
- Beanwise
- Binz

The Anne Johnston Health Station

MONTGOMERY AVENUE

Stock T.C.

- Whitehaus Condos
- Chattime
- Ono Poke Bar
- RBC

Yonge Eglinton Centre

- SEPHORA
- AROMA
- URBAN OUTFITTERS
- WINNERS
- REXALL
- CINEPLEX
- METRO SUPERMARKET

BMO

Scotiabank

Open Court

KEEWATIN AVENUE

- Ollie Quinn
- The Ten Spot
- Carload on Yonge
- Squint Eyewear
- The Right Wing Sports Bar
- De Mello Coffee
- Prisma Hair Design
- 2485A Yonge Street**
- La Boheme Cafe
- Fuwa Fuwa
- Our Wellness
- Touhenboku Ramen
- TD Bank

ERSKINE AVENUE

- Starbucks
- Wine Rack
- Canada Computers
- Popey's
- Freshii
- Village Juicery
- La Vecchia
- Noah's Health Foods
- Saporito Cafe
- Wing Machine/Ginos Pizza
- Jolibee

BROADWAY AVENUE

- Tim Hortons
- Grazi Ristorante
- Mars Diner
- The Shoe Company
- Shoppers Drug Mart
- Pai Uptown
- Dollarama
- Bell
- Chipotle

ROEHAMPTON AVENUE

- Kupfert & Kim
- Paramount
- Mad Radish
- BMV
- TD BANK

EGLINTON AVENUE EAST

- CIBC
- Tim Hortons

YONGE STREET



Advisory Team

Arlin Markowitz*

Executive Vice President
416 815 2374
arlin.markowitz@cbre.com

Alex Edmison*

Senior Vice President
416 874 7266
alex.edmison@cbre.com

Jackson Turner**

Senior Vice President
416 815 2394
jackson.turner@cbre.com

Teddy Taggart*

Associate Vice President
416 847 3254
teddy.taggart@cbre.com

Emily Everett

Sales Representative
647 943 4185
emily.everett@cbre.com

*Sales Representative

**Broker

CBRE

This disclaimer shall apply to CBRE Limited, Real Estate Brokerage, and to all other divisions of the Corporation; to include all employees and independent contractors ("CBRE"). The information set out herein, including, without limitation, any projections, images, opinions, assumptions and estimates obtained from third parties (the "Information") has not been verified by CBRE, and CBRE does not represent, warrant or guarantee the accuracy, correctness and completeness of the Information. CBRE does not accept or assume any responsibility or liability, direct or consequential, for the Information or the recipient's reliance upon the Information. The recipient of the Information should take such steps as the recipient may deem necessary to verify the Information prior to placing any reliance upon the Information. The Information may change and any property described in the Information may be withdrawn from the market at any time without notice or obligation to the recipient from CBRE. CBRE and the CBRE logo are the service marks of CBRE Limited and/or its affiliated or related companies in other countries. All other marks displayed on this document are the property of their respective owners. All Rights Reserved.