

595-603

# KING

SUBLEASE OPPORTUNITY IN THE HEART OF KING WEST

CBRE

CBRE LIMITED, REAL ESTATE BROKERAGE | 145 KING STREET WEST | SUITE 1100 | TORONTO, ON M5H 1J8 | 416 362 2244 | [WWW.CBRE.CA](http://WWW.CBRE.CA)





## 595-603 KING STREET WEST FOR SUBLEASE

**Ground:** 6,195 sq. ft.

**Second:** 900 sq. ft.

**Total:** 7,095 sq. ft. + 2,124 sq. ft. lower level

**TMI:** \$115,000/per annum

Please contact advisors for more information

- 2 year sublease with potential to sign on longer term with landlord
- Features large patio on King Street West
- Located two doors west of the electric intersection of King Street West and Portland Street in the city's most dynamic market where fashion intersects with tech office, finance and high density residential
- Neighbouring traffic generators include The Well, Westbank's BIG project, Ruby Soho Bar, Buca, Patagonia, Gusto 101, etc.



595-603

KING

Queen Street West

Spadina Avenue

King Street West

Bathurst Street





# LOCATION MAP

Bathurst Street



511

559-603 KING



504



510

Pedestrian Walkways



Future Condominium

Richmond St W

ACE HOTEL

St. Andrews Park

Adelaide St W

King St W

Stewart Street

Wellington St W

Spadina Ave

Portland Street

Victoria Memorial Square

Clarence

The Well Development Site

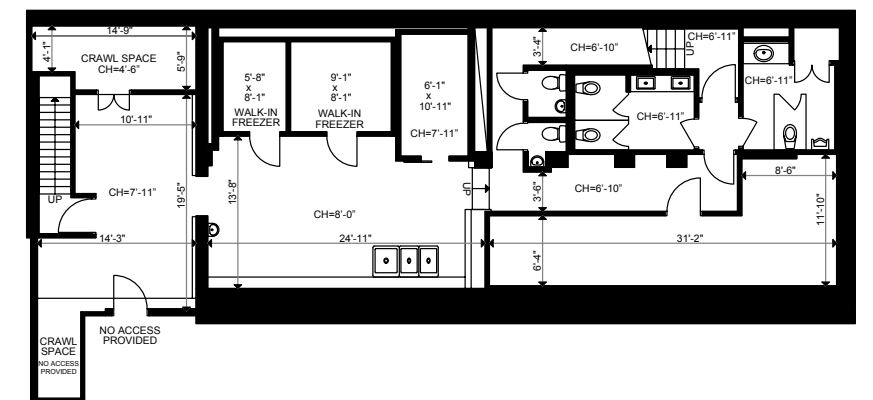
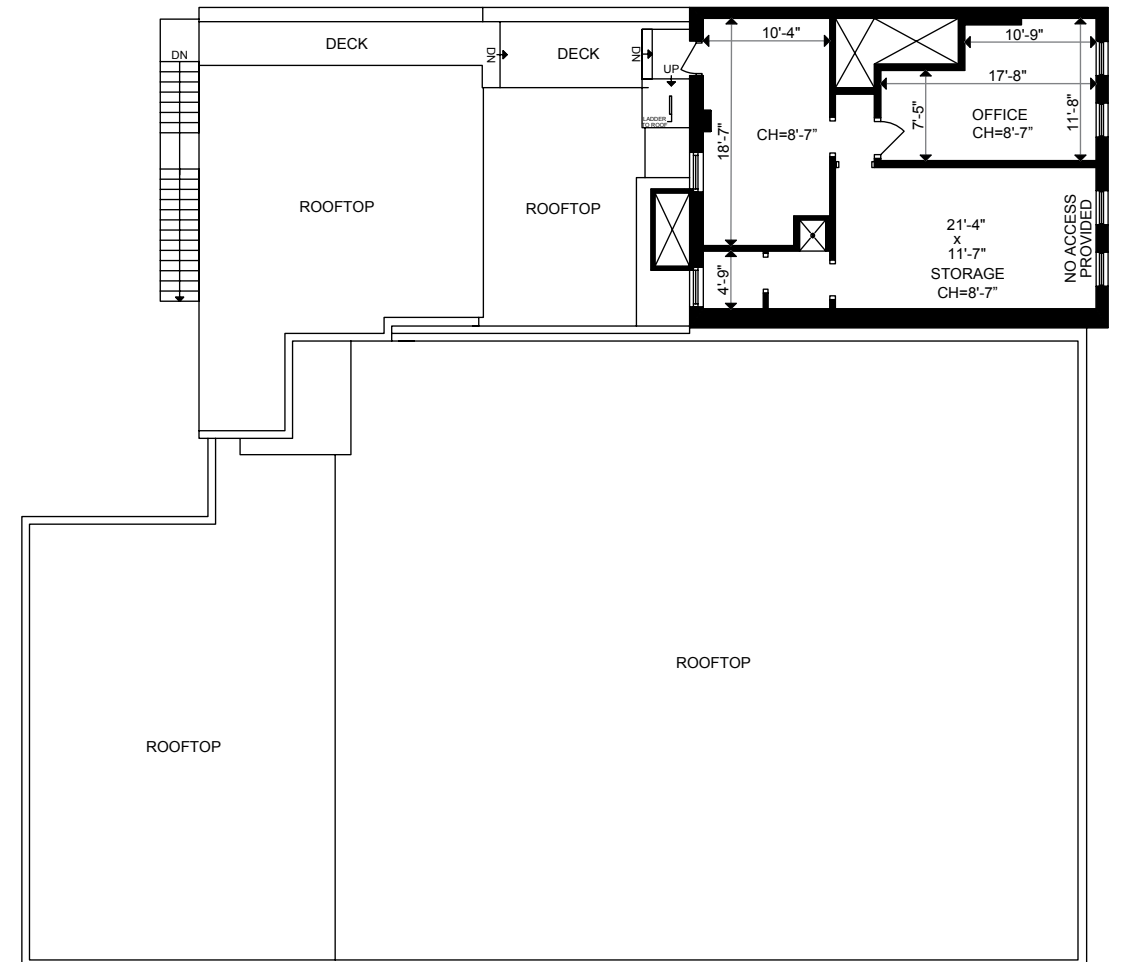
Front St W







**Lower Level | 2,124 sq. ft.**





## CONTACT

Arlin Markowitz\*  
Senior Vice President  
416 815 2374  
arlin.markowitz@cbre.com

Alex Edmison\*  
Senior Vice President  
416 874 7266  
alex.edmison@cbre.com

Jackson Turner\*\*  
Associate Vice President  
416 815 2394  
jackson.turner@cbre.com

Teddy Taggart\*  
Sales Associate  
416 847 3254  
teddy.taggart@cbre.com

\*Sales Representative \*\*Broker

## CBRE

This disclaimer shall apply to CBRE Limited, Real Estate Brokerage, and to all other divisions of the Corporation; to include all employees and independent contractors ("CBRE"). The information set out herein, including, without limitation, any projections, images, opinions, assumptions and estimates obtained from third parties (the "Information") has not been verified by CBRE, and CBRE does not represent, warrant or guarantee the accuracy, correctness and completeness of the Information. CBRE does not accept or assume any responsibility or liability, direct or consequential, for the Information or the recipient's reliance upon the Information. The recipient of the Information should take such steps as the recipient may deem necessary to verify the Information prior to placing any reliance upon the Information. The Information may change and any property described in the Information may be withdrawn from the market at any time without notice or obligation to the recipient from CBRE. CBRE and the CBRE logo are the service marks of CBRE Limited and/or its affiliated or related companies in other countries. All other marks displayed on this document are the property of their respective owners. All Rights Reserved.