

for lease
16 CHURCH

BERCZY PLACE | ST. LAWRENCE NEIGHBOURHOOD, TORONTO

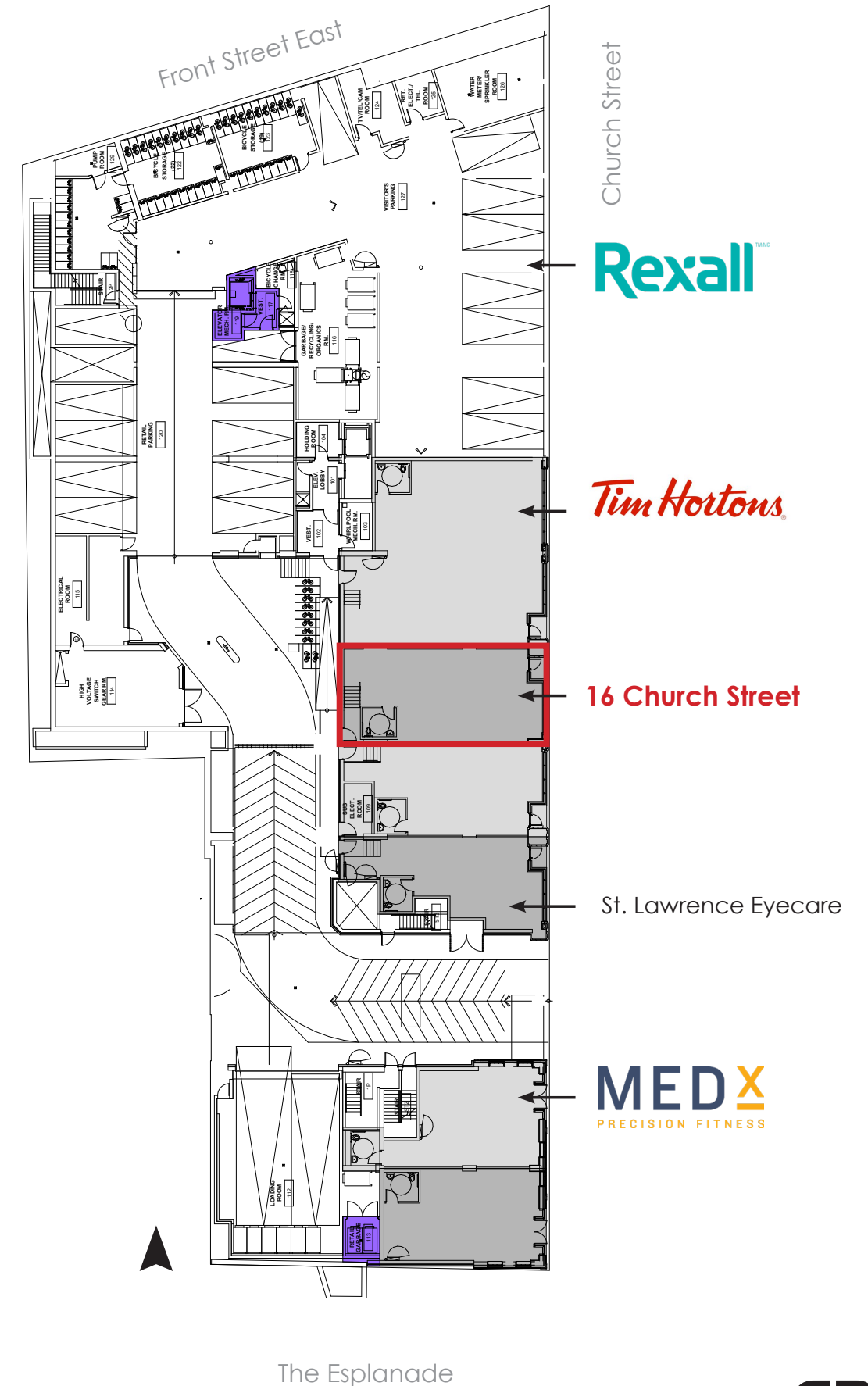


CBRE

16 CHURCH STREET

Size: 1,130 sq. ft.
Net Rent: \$50.00 per sq. ft.
TMI: \$36.14 per sq. ft.
Available: Immediately

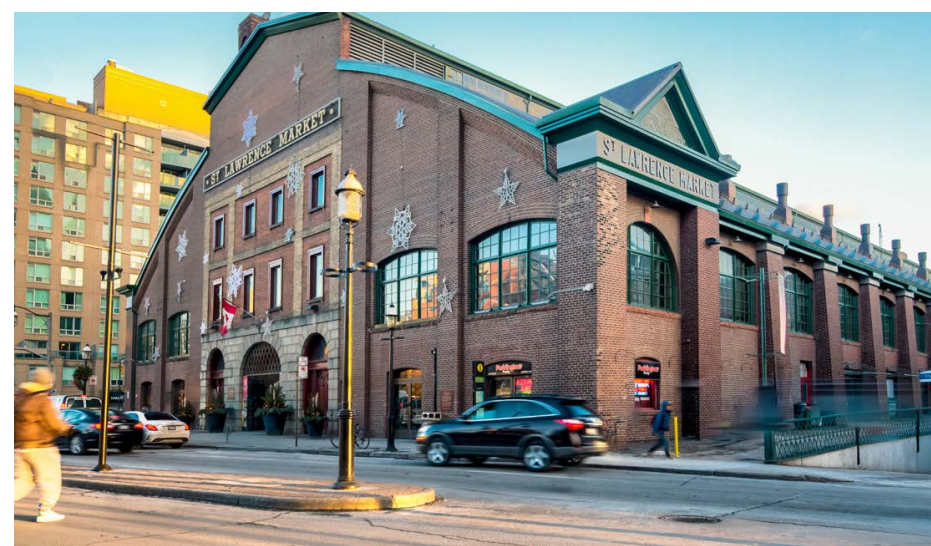
- Steps from both The Financial Core and St Lawrence Market
- Fully-fixture former juice bar
- Base of the heritage preserved Berczy Place, with over 160 residential units
- Co-tenants include Tim Hortons & Rexall
- Parking available





THE LOCATION

Where the Financial Core Meets the St. Lawrence Market





CONTACT

Arlin Markowitz*
Executive Vice President
416 815 2374
arlin.markowitz@cbre.com

Alex Edmison*
Senior Vice President
416 874 7266
alex.edmison@cbre.com

Jackson Turner**
Senior Vice President
416 815 2394
jackson.turner@cbre.com

Teddy Taggart*
Associate Vice President
416 847 3254
teddy.taggart@cbre.com

Emily Everett*
Sales Representative
647 943 4185
emily.everett@cbre.com

*Sales Representative

**Broker

This disclaimer shall apply to CBRE Limited, and to all divisions of the Corporation ("CBRE"). The information set out herein (the "Information") has not been verified by CBRE, and CBRE does not represent, warrant or guarantee the accuracy, correctness and completeness of the Information. CBRE does not accept or assume any responsibility or liability, direct or consequential, for the Information or the recipient's reliance upon the Information. The recipient of the Information should take such steps as the recipient may deem necessary to verify the Information prior to placing any reliance upon the Information. The Information may change and any property described in the Information may be withdrawn from the market at any time without notice or obligation to the recipient from CBRE.