

1909 *yonge*

HIGH PROFILE CORNER RETAIL FOR LEASE AT YONGE + DAVISVILLE



Retail for Lease

SIZE: Ground: 1,079 sq. ft.
Second: 934 sq.ft.
Basement: 1,114 sq. ft.
Total: 3,217 sq. ft.

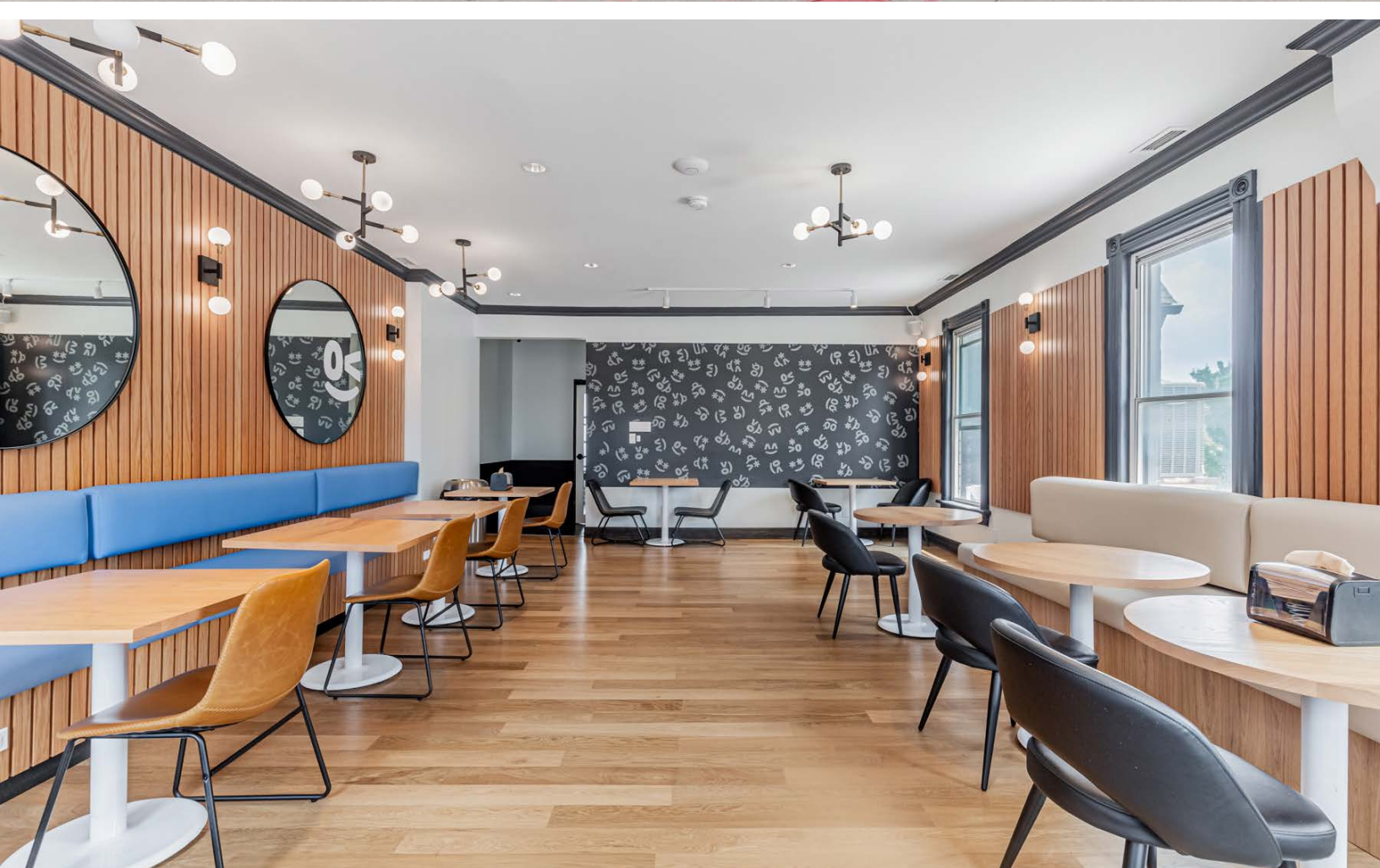
+ Patio

GROSS RENT: \$10,000/month + utilities

AVAILABLE: Immediately

- Prime corner location at the busy intersection of Yonge & Davisville
- Across the street from Davisville Station
- Large patio space fronting Davisville Avenue
- On-site parking available
- Neighbouring tenants include Burrito Boyz, Tim Hortons, Subway, Tabule Midtown, Little Sister Food Bar and many more







west elm

HILLSDALE AVENUE

UOVO RESIDENCES •

CYCLEPATH •

PEPPERMILLS •

LOLA ROAD



STRUCTUBE

2000 YONGE DENTAL •

RITCHIE FRAME ART GALLERY •

IMPERIAL STREET



THE WALLACE GASTROPUB •

SUBWAY •

Tim Hortons

DAVISVILLE AVE

DAVISVILLE SUBWAY STATION



TORONTO TRANSIT
COMMISSION HEAD OFFICE



west elm



MANOR ROAD EAST

- SKIS AND BIKES
- LITTLE SISTER FOOD BAR

GLEBE ROAD

- DEE THAI CUISINE



BELSIZE ROAD

J. DAVIS. HOUSE

LCBO

MILLWOOD ROAD

- PIZZA PIZZA
- KRAMER'S BAR & GRILL

1909
YONGE

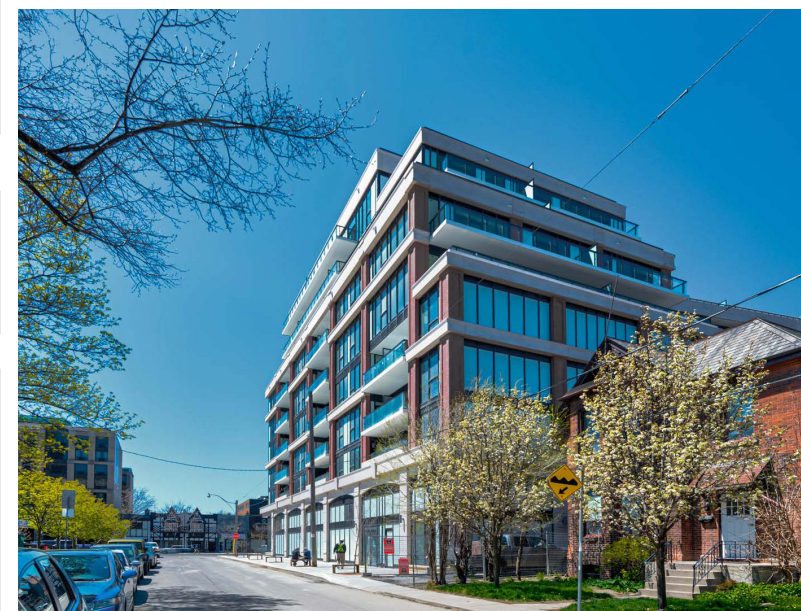
- Burrito Boyz

- GUARDIAN PHARMACY
- THAI EXPRESS

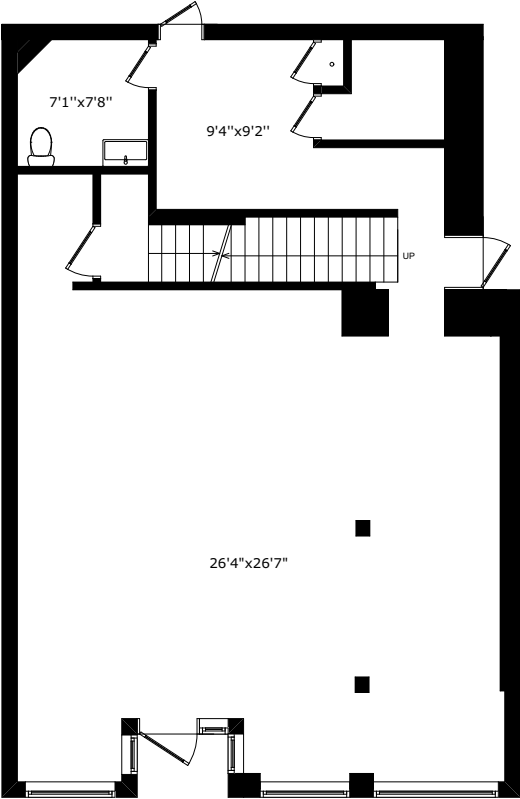
BALLIOL STREET

- FIONN MACCOOLS

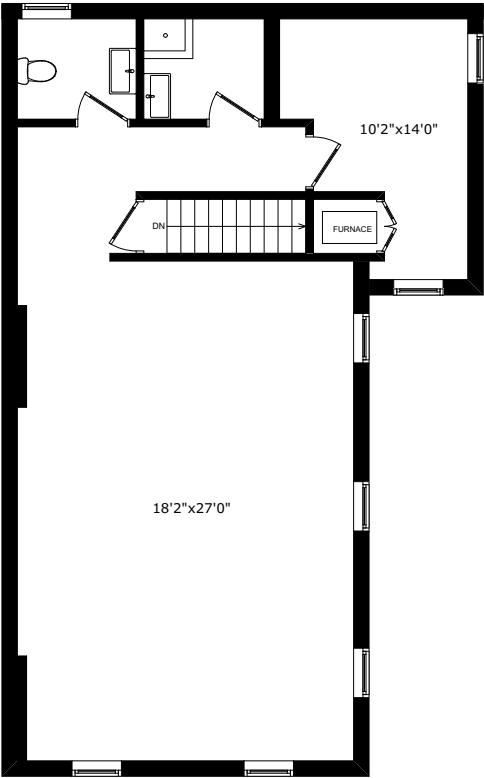
ETHAN
ALLEN



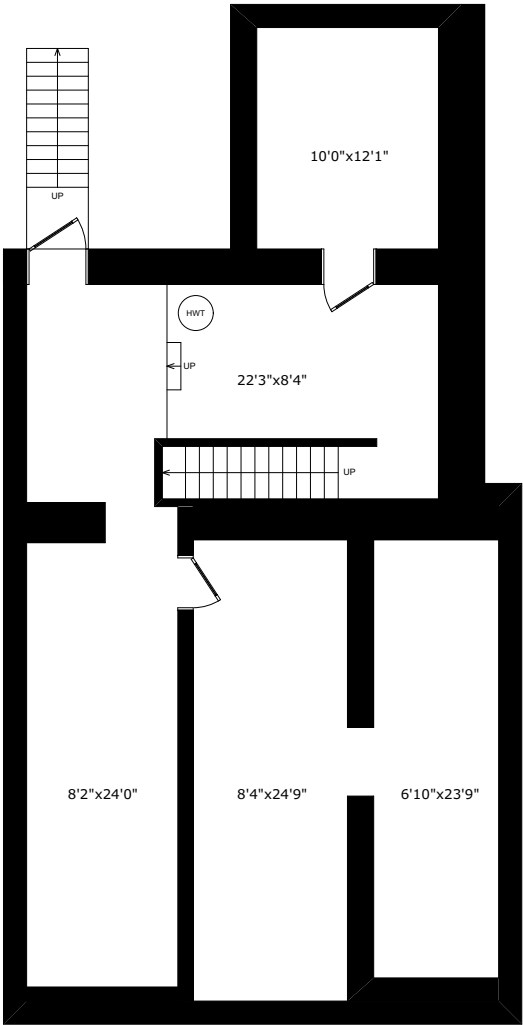
Floor Plans



GROUND



SECOND



BASEMENT

GROUND:	1,079 sq. ft.
SECOND:	934 sq.ft.
BASEMENT:	1,114 sq. ft.





Contact

Arlin Markowitz*
Executive Vice President
416 815 2374
arlin.markowitz@cbre.com

Alex Edmison*
Senior Vice President
416 874 7266
alex.edmison@cbre.com

Jackson Turner**
Senior Vice President
416 815 2394
jackson.turner@cbre.com

Teddy Taggart*
Associate Vice President
416 847 3254
teddy.taggart@cbre.com

Emily Everett*
Sales Representative
647 943 4185
emily.everett@cbre.com

CBRE

*Sales Representative **Broker

This disclaimer shall apply to CBRE Limited, Real Estate Brokerage, and to all other divisions of the Corporation; to include all employees and independent contractors ("CBRE"). The information set out herein, including, without limitation, any projections, images, opinions, assumptions and estimates obtained from third parties (the "Information") has not been verified by CBRE, and CBRE does not represent, warrant or guarantee the accuracy, correctness and completeness of the Information. CBRE does not accept or assume any responsibility or liability, direct or consequential, for the Information or the recipient's reliance upon the Information. The recipient of the Information should take such steps as the recipient may deem necessary to verify the Information prior to placing any reliance upon the Information. The Information may change and any property described in the Information may be withdrawn from the market at any time without notice or obligation to the recipient from CBRE. CBRE and the CBRE logo are the service marks of CBRE Limited and/or its affiliated or related companies in other countries. All other marks displayed on this document are the property of their respective owners. All Rights Reserved.