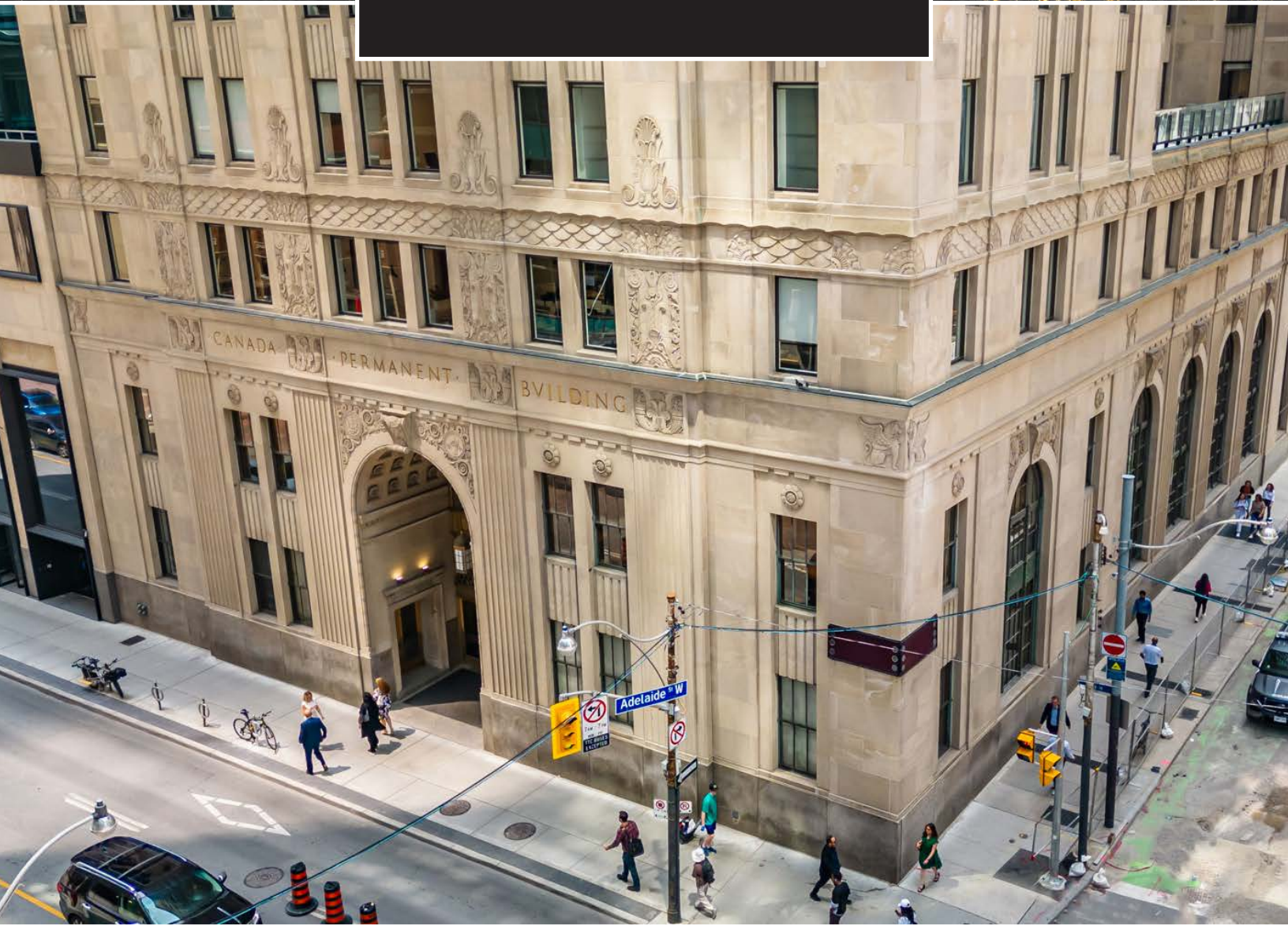


320

BAY STREET

HIGH PROFILE RETAIL FOR LEASE



HIGH PROFILE CORNER RETAIL FOR LEASE IN THE HEART OF DOWNTOWN TORONTO

menkes **CBRE**

320

BAY STREET

320 Bay Street is a once-in-a-lifetime retail opportunity in a beautifully restored 1930's building at the corner of Bay and Adelaide in the heart of Downtown Toronto.

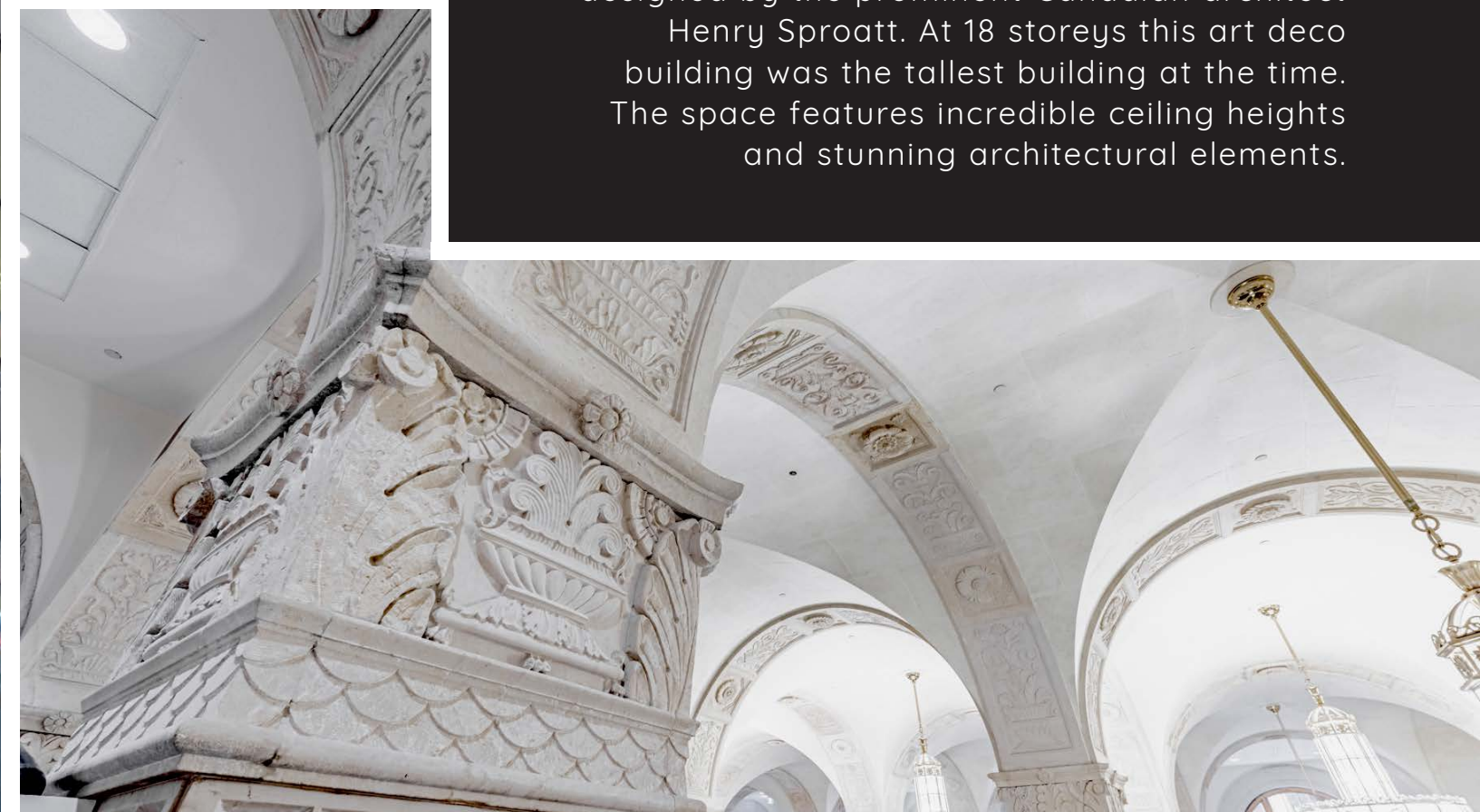
Perfectly positioned in the core, 320 Bay Street is surrounded by dense mixed-use towers, iconic Toronto points-of-interests, unmatched transit infrastructure, urban amenities and world-class restaurants and hotels.

 [CLICK TO PLAY](#)



A Building With History

Built in 1931 and formally known as the Canada Permanent Trust Building, 320 Bay Street was designed by the prominent Canadian architect Henry Sproatt. At 18 storeys this art deco building was the tallest building at the time. The space features incredible ceiling heights and stunning architectural elements.

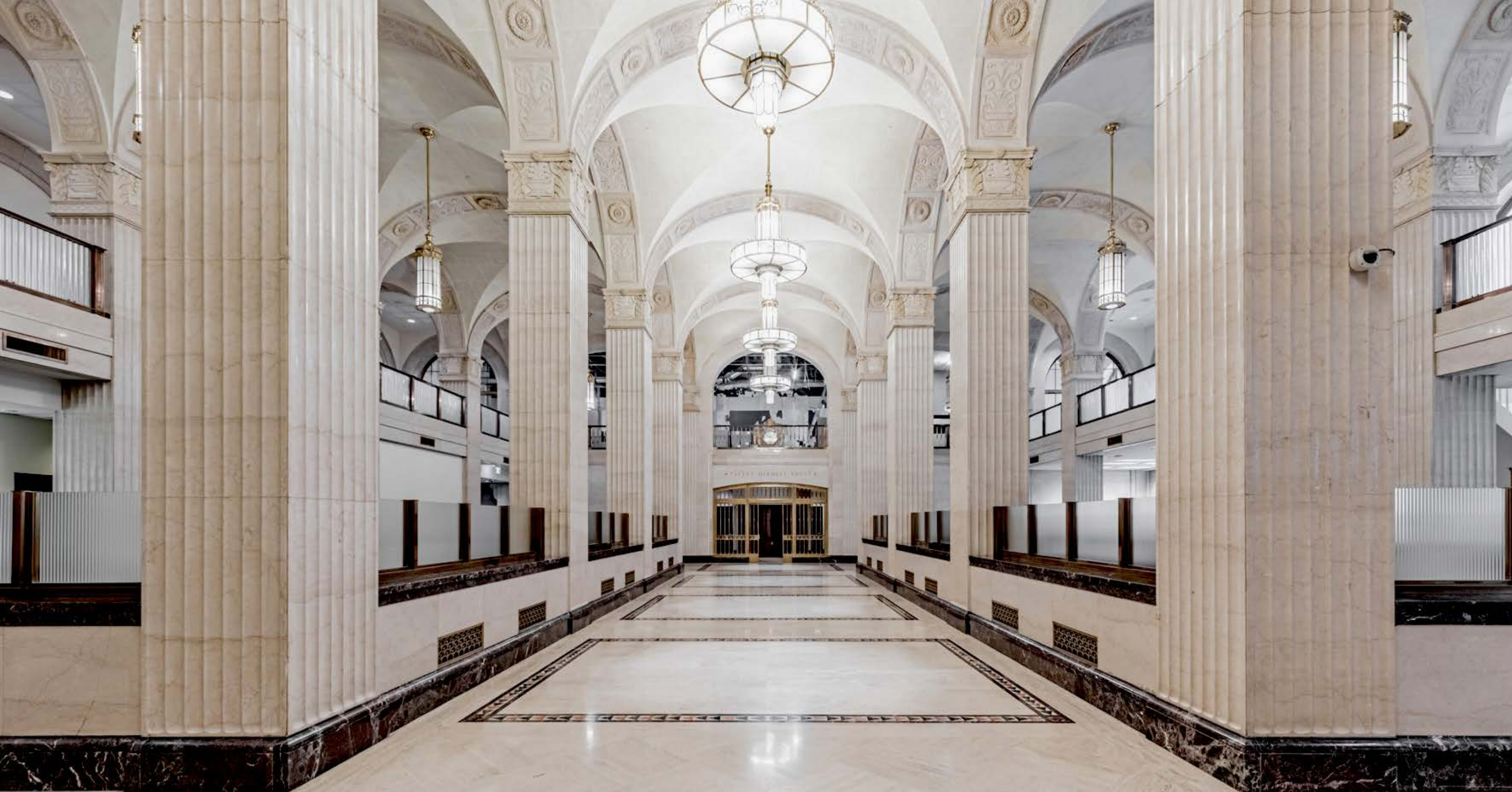


320
BAY STREET



320

BAY STREET



320
BAY STREET

FLOOR PLANS

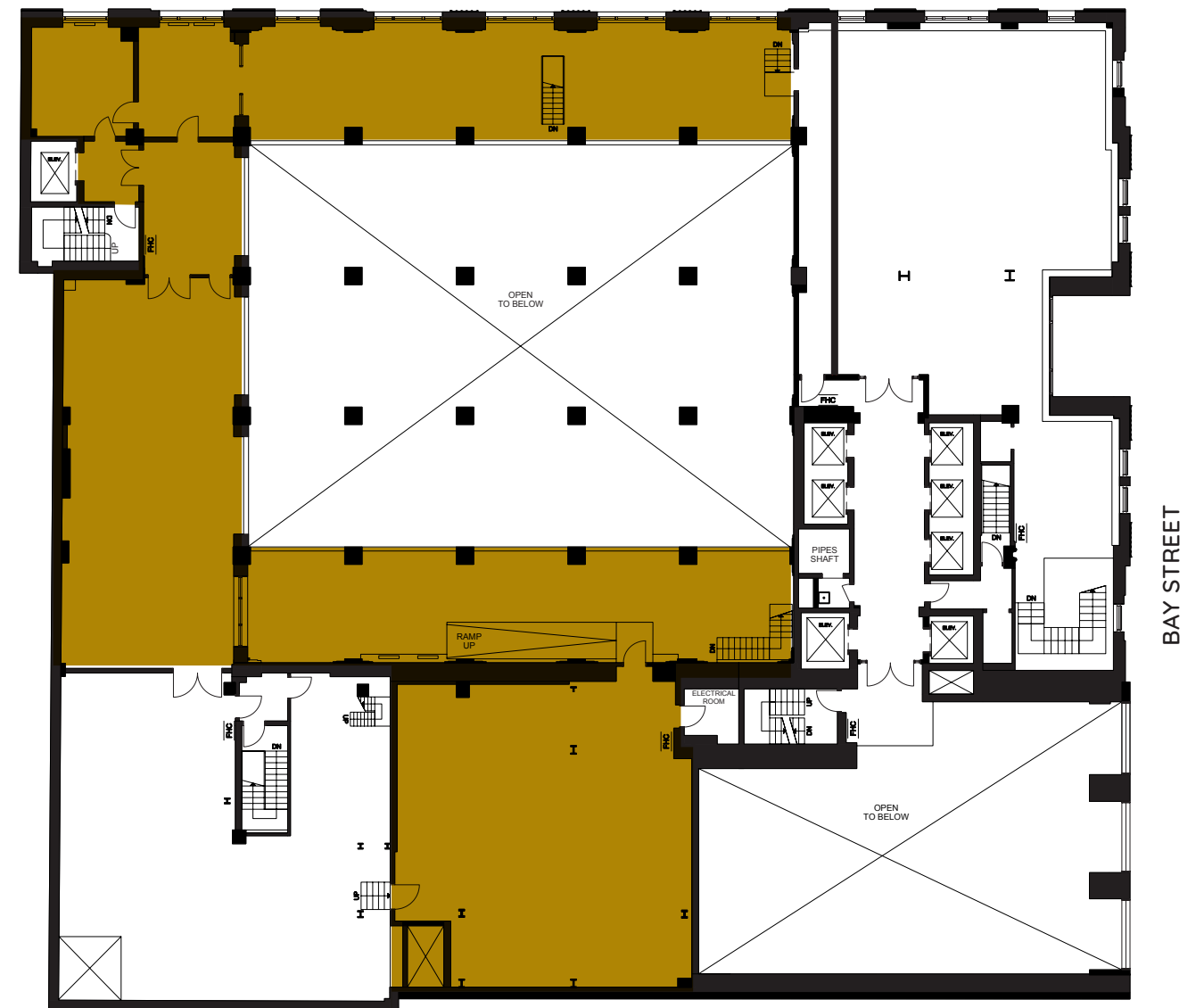
GROUND LEVEL

ADELAIDE STREET WEST



MEZZANINE

ADELAIDE STREET WEST



THE LOCATION

320 Bay Street is located on the most important corner in the heart of the Financial District at Bay and Adelaide streets. It benefits from an extremely high daytime population and foot traffic and is surrounded by some of the city's top performing restaurants which achieve over \$1,500 per sq. ft. in sales.

It is perfectly positioned between five subway stops and is within a 5-minute walk to all downtown transit options including streetcar, buses, subway, GO Trains and the UP Express. The building has direct access to Toronto's PATH, a 30 km underground network connecting more than 75 buildings, six subway stations, 9 hotels and Toronto's busiest transit hub, Union Station.

320 Bay also benefits from the city's robust tourism population. Popular tourist attractions such as Nathan Phillips Square, the CN Tower, Scotiabank Arena, Ripely's Aquarium, Dundas Square and the Roger's Centre are all within comfortable walking distance. Additionally, the Property is within proximity to numerous premier hotels including the Shangri-La, The St. Regis Hotel, The Ritz Carlton and Fairmount Royal York.



3.7 MILLION SF
of Retail Space



OVER 1,200
Shops & Services

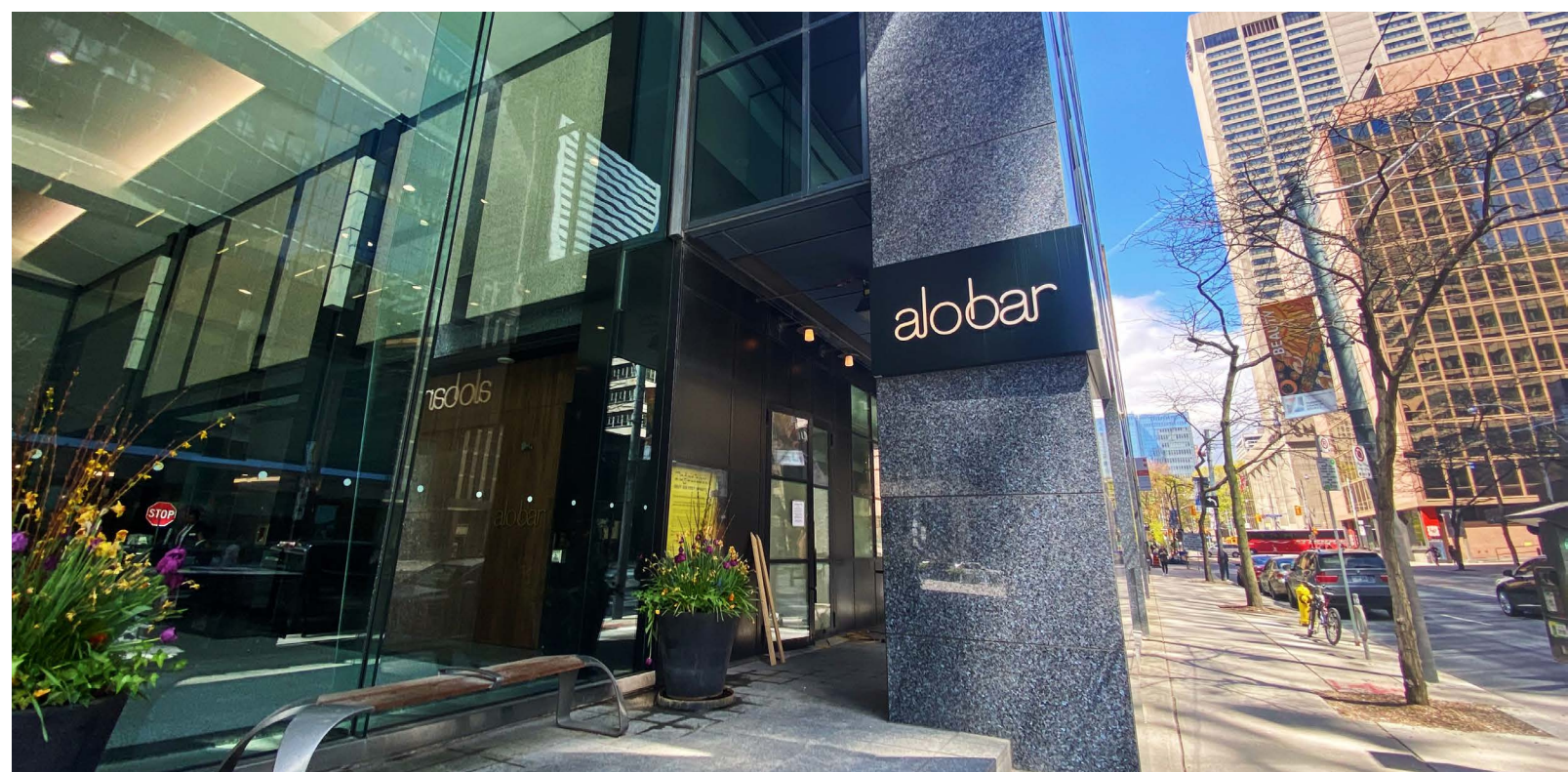


OVER 75 BUILDINGS
are Connected to the PATH

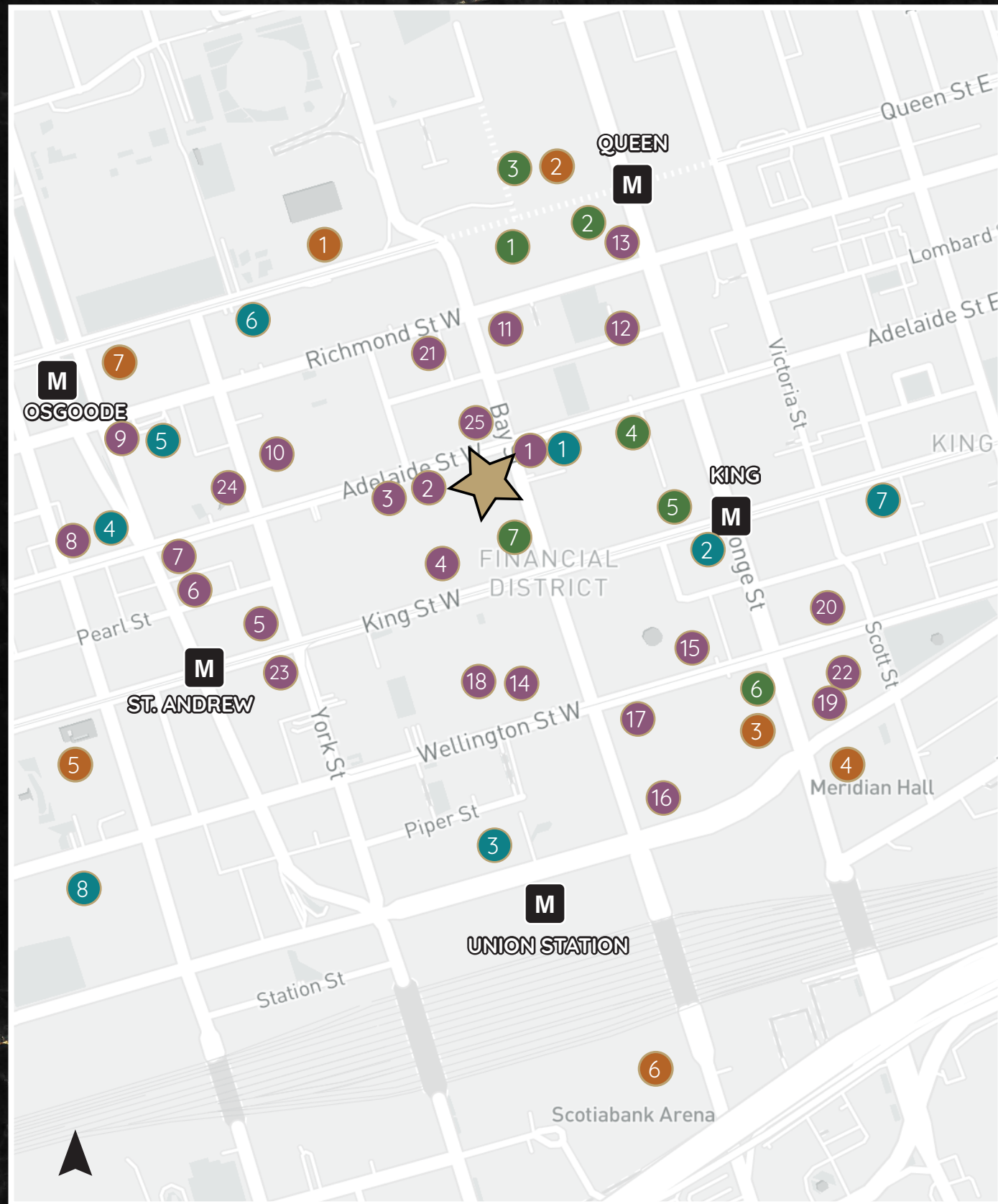


6 SUBWAY STATIONS
are Connected to the PATH





THE LOCATION



HOTELS

- 1 The St. Regis Hotel
- 2 One King West
- 3 Fairmont Royal York
- 4 Shang-Ri-La
- 5 Hilton Toronto
- 6 Sheraton Toronto
- 7 The Omni King Edward Hotel
- 8 The Ritz Carlton

ENTERTAINMENT/ATTRACTIONS

- 1 Nathan Phillips Square
- 2 Toronto Eaton Centre
- 3 Hockey Hall of Fame
- 4 Meridian Hall
- 5 Roy Thompson Hall
- 6 Scotiabank Arena
- 7 Four Seasons Centre

RETAIL/SHOPPING

- 1 The Bay
- 2 Saks Fifth Avenue
- 3 Eaton Centre
(Apple, H&M, Uniqlo, Aesop, Alo, Aritzia, Zara, Mango, Maje, AllSaints, Arc'teryx + more)
- 4 Winners
- 5 LCBO
- 6 Roots
- 7 Harry Rosen

FOOD + DRINK

- | | |
|---------------------------|-------------------------|
| 1 Louix Louis | 14 Bymark |
| 2 Cactus Club Cafe | 15 Jump |
| 3 Reds Wine Tavern | 16 Chotto Matte Toronto |
| 4 King Taps | 17 Ki Modern Japanese |
| 5 Earls Kitchen + Bar | 18 Canoe |
| 6 Pizzeria Libretto | 19 Oliver & Bonacini |
| 7 Cafe Landwer | 20 Cantina Mercato |
| 8 Soho House | 21 Daphne |
| 9 Ruth's Chris Steakhouse | 22 Biff's Bistro |
| 10 The Keg | 23 Modus |
| 11 Hy's Steakhouse | 24 Alobar Downtown |
| 12 The Chase | 25 Milos |
| 13 Lena Restaurant | |

CO-TENANCIES & TRAFFIC DRIVERS



CONTACT

ARLIN MARKOWITZ*

EXECUTIVE VICE PRESIDENT
416 815 2374
ARLIN.MARKOWITZ@CBRE.COM

ALEX EDMISON*

SENIOR VICE PRESIDENT
416 874 7266
ALEX.EDMISON@CBRE.COM

JACKSON TURNER**

SENIOR VICE PRESIDENT
416 815 2394
JACKSON.TURNER@CBRE.COM

TEDDY TAGGART*

VICE PRESIDENT
416 847 3254
TEDDY.TAGGART@CBRE.COM

EMILY EVERETT*

SALES REPRESENTATIVE
647 943 4185
EMILY.EVERETT@CBRE.COM

*SALES REPRESENTATIVE

**BROKER



This disclaimer shall apply to CBRE Limited, Real Estate Brokerage, and to all other divisions of the Corporation; to include all employees and independent contractors ("CBRE"). The information set out herein, including, without limitation, any projections, images, opinions, assumptions and estimates obtained from third parties (the "Information") has not been verified by CBRE, and CBRE does not represent, warrant or guarantee the accuracy, correctness and completeness of the Information. CBRE does not accept or assume any responsibility or liability, direct or consequential, for the Information or the recipient's reliance upon the Information. The recipient of the Information should take such steps as the recipient may deem necessary to verify the Information prior to placing any reliance upon the Information. The Information may change and any property described in the Information may be withdrawn from the market at any time without notice or obligation to the recipient from CBRE. CBRE and the CBRE logo are the service marks of CBRE Limited and/or its affiliated or related companies in other countries. All other marks displayed on this document are the property of their respective owners. All Rights Reserved.